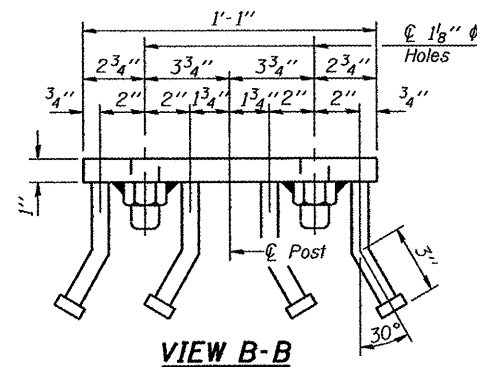
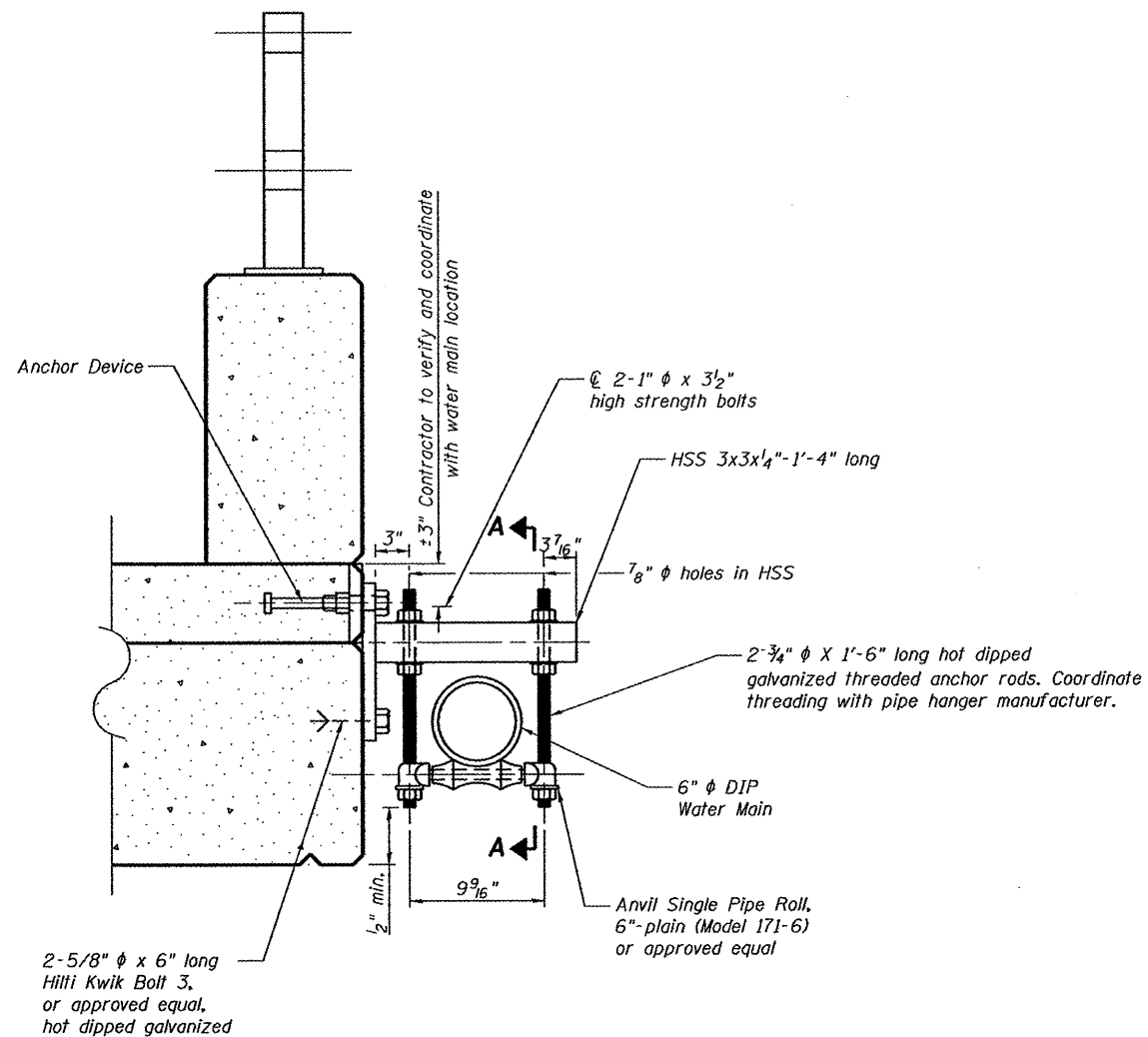


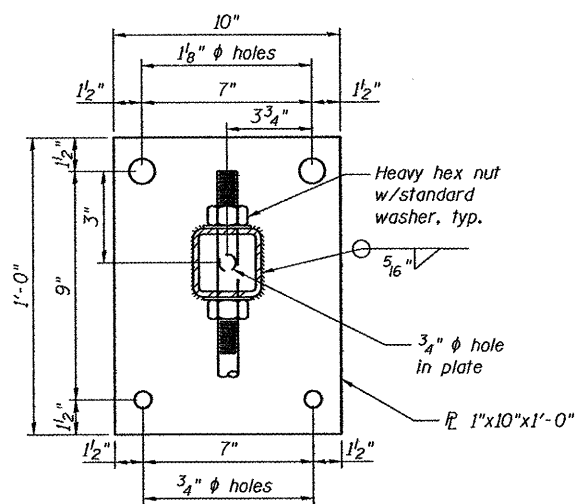
WATER MAIN HANGER LAYOUT - OUTSIDE ELEVATION OF NORTH FACE



VIEW B-B

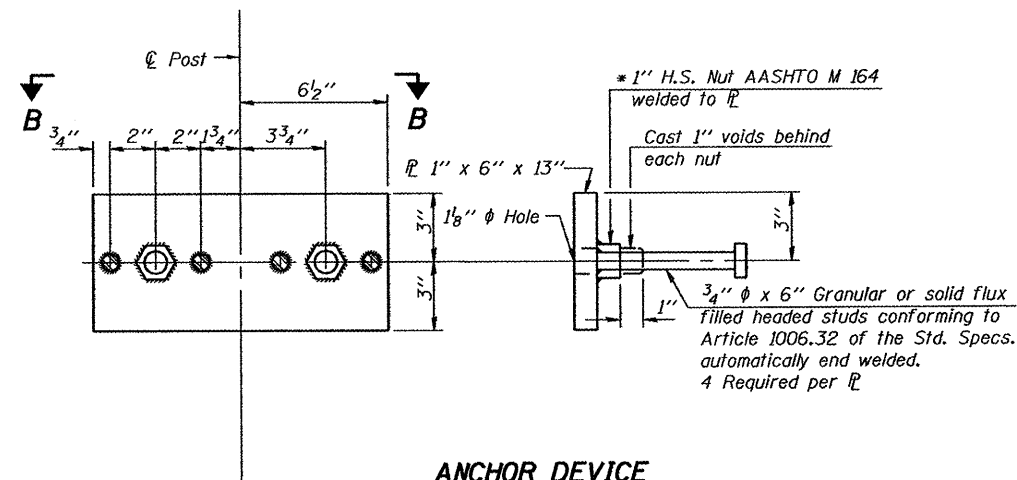


**SECTION C-C
WATER MAIN HANGER DETAIL**
(3 Assemblies req'd)
Looking West



VIEW A-A

Water Main not shown for clarity



ANCHOR DEVICE

* Threaded areas shall be plugged or blocked off during casting of sidewalk/slab.

NOTES

1. Hollow structural steel tubing shall conform to the requirements of ASTM designation A500 Grade B. Structural Steel Tubing shall meet the longitudinal CVN requirements of 15 ft.-lbs. at 0° F.
2. All other steel shapes and plates shall conform to the requirements of AASHTO M 270 Grade 36.
3. Bolts and nuts shall conform to the requirements of ASTM designation A307 except for high strength bolts, nuts and washers noted which shall conform to AASHTO M 164.
4. All bolts, nuts, washers and lock washers shall be galvanized according to AASHTO M 232.
5. All anchor devices, plates and HSS shall be galvanized after shop fabrication according to AASHTO M-111 and ASTM A 385.
6. The 1" high strength bolts connecting the plate to the concrete shall be tightened to a snug fit and given an additional 1/8 turn.
7. The cost of the water main hanger assemblies shall be included in the unit price bid for Ductile Iron Pipe Water Main 6".

HRGreen
PROJECT CONTACT: Kevin M. Arty
DATE PLOTTED: 5/24/2012 10:58:54 AM
FILE NAME: 061007-182.dwg
PLOT DRIVER: pldtch
PEN TABLE: standard-11.ctb.tbl

HRGreen
HRGreen.com
Illinois Professional Design Firm
104-001522

USER NAME = whood	DESIGNED - KMA	REVISED -
PLOT SCALE =	CHECKED - WJH	REVISED -
PLOT DATE = 3/23/2012	DRAWN - RGD	REVISED -
	CHECKED - 3/26/12	REVISED -

CITY OF ROCKFORD

**PIERCE AVENUE OVER NORTHWEST DRAINAGEWAY
WATERMAIN HANGER DETAILS**

SHEET NO. S-7 OF S-8 SHEETS

F.A. RTE. 5033	SECTION 11-00581-00-BR	COUNTY WINNEBAGO	TOTAL SHEETS 17	SHEET NO. 14
				CONTRACT NO.
ILLINOIS FED. AID PROJECT				