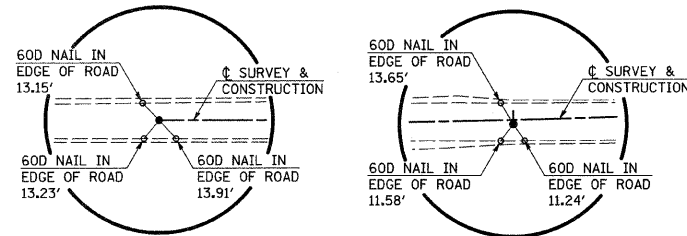


W. 1/2, SE. 1/4, SEC. 10, T. 28 N., R. 12 W., 2ND P.M.

JEAN MARIE BARNLUND, ELIZABETH ANN BARNLUND,
JOLENE MARIE BARNLUND BOWEN AND JAMES WILBUR BARNLUND

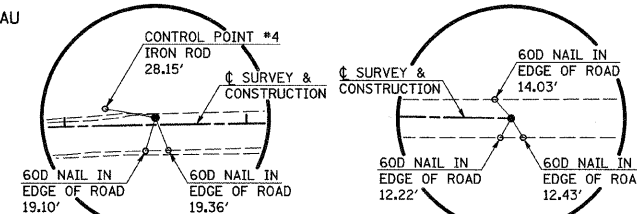
E. 1/2, SE. 1/4, SEC. 10, T. 28 N., R. 12 W., 2ND P.M.

KENNETH L. & LINDA M. ARSENEAU



P.O.T. STA. 83+99.99
IRON PIN (FLUSH)

P.I. STA. 86+99.99
IRON PIN (FLUSH)



P.I. STA. 91+50.02
IRON PIN (FLUSH)

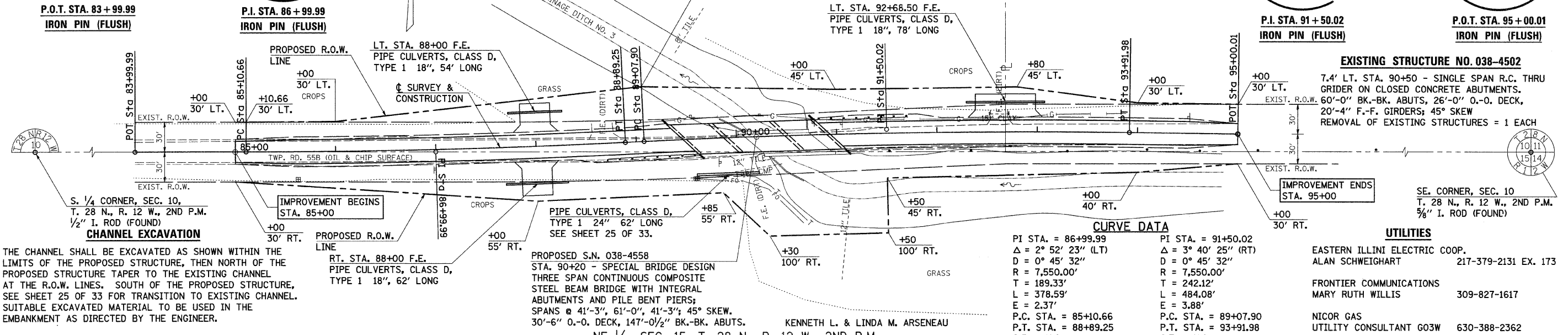
P.O.T. STA. 95+00.01
IRON PIN (FLUSH)

PIPES TO BE REMOVED

RT. STA. 90+22, 18" CMP, 50' LONG
LT. STA. 92+62, 15" CLAY/HEADWALLS, 20' LONG
COST INCLUDED IN "EARTH EXCAVATION".

ENTRANCES TO BE BUILT

LT. STA. 88+00, F.E. -12.8%, 30' ROADWAY
RT. STA. 88+00, F.E. -10.0%, 30' ROADWAY
LT. STA. 92+68.5, F.E. -14.25%, 60' ROADWAY
QUANTITIES INCLUDED IN THOSE LISTED



S. 1/4 CORNER, SEC. 10,
T. 28 N., R. 12 W., 2ND P.M.
1/2" I. ROD (FOUND)
CHANNEL EXCAVATION

THE CHANNEL SHALL BE EXCAVATED AS SHOWN WITHIN THE LIMITS OF THE PROPOSED STRUCTURE, THEN NORTH OF THE PROPOSED STRUCTURE TAPER TO THE EXISTING CHANNEL AT THE R.O.W. LINES. SOUTH OF THE PROPOSED STRUCTURE, SEE SHEET 25 OF 33 FOR TRANSITION TO EXISTING CHANNEL. SUITABLE EXCAVATED MATERIAL TO BE USED IN THE EMBANKMENT AS DIRECTED BY THE ENGINEER.

CHANNEL EXCAVATION = 2530 CU. YD.

IMPROVEMENT BEGINS
STA. 85+00

PROPOSED R.O.W. LINE

RT. STA. 88+00 F.E.
PIPE CULVERTS, CLASS D,
TYPE 1 18", 62" LONG

PROPOSED S.N. 038-4558
STA. 90+20 - SPECIAL BRIDGE DESIGN
THREE SPAN CONTINUOUS COMPOSITE
STEEL BEAM BRIDGE WITH INTEGRAL
ABUTMENTS AND PILE BENT PIERS;
SPANS @ 41'-3", 61'-0", 41'-3"; 45° SKEW.
30'-6" O.-O. DECK, 147'-0 1/2" BK.-BK. ABUTS.

KENNETH L. & LINDA M. ARSENEAU
NE 1/4, SEC. 15, T. 28 N., R. 12 W., 2ND P.M.

CURVE DATA

PI STA. = 86+99.99	PI STA. = 91+50.02
Δ = 2° 52' 23" (LT)	Δ = 3° 40' 25" (RT)
D = 0° 45' 32"	D = 0° 45' 32"
R = 7,550.00'	R = 7,550.00'
T = 189.33'	T = 242.12'
L = 378.59'	L = 484.08'
E = 2.37'	E = 3.88'
P.C. STA. = 85+10.66	P.C. STA. = 89+07.90
P.T. STA. = 88+89.25	P.T. STA. = 93+91.98
S.E. = N.C.	S.E. = N.C.

EXISTING STRUCTURE NO. 038-4502

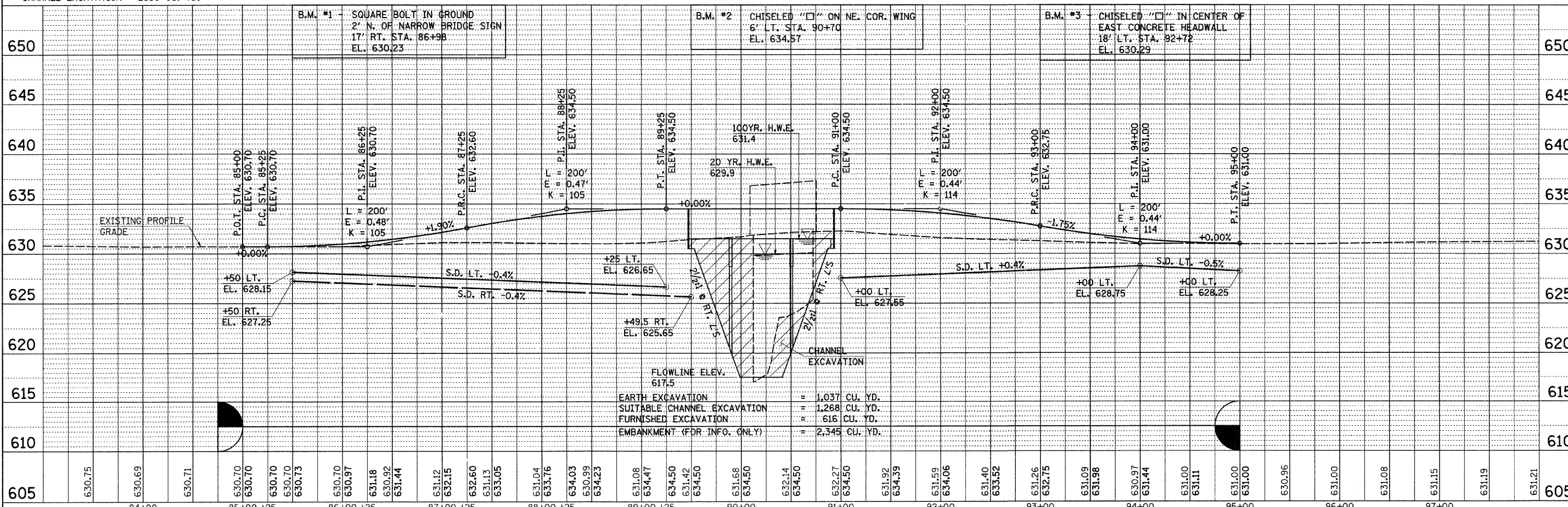
7.4' LT. STA. 90+50 - SINGLE SPAN R.C. THRU
GRIDER ON CLOSED CONCRETE ABUTMENTS.
60'-0" BK.-BK. ABUTS, 26'-0" O.-O. DECK,
20'-4" F.-F. GIRDERS, 45° SKEW
REMOVAL OF EXISTING STRUCTURES = 1 EACH

IMPROVEMENT ENDS
STA. 95+00

SE. CORNER, SEC. 10
T. 28 N., R. 12 W., 2ND P.M.
5/8" I. ROD (FOUND)

UTILITIES

EASTERN ILLINI ELECTRIC COOP.	
ALAN SCHWEIGHART	217-379-2131 EX. 173
FRONTIER COMMUNICATIONS	
MARY RUTH WILLIS	309-827-1617
NICOR GAS	
UTILITY CONSULTANT G03W	630-388-2362



FILE NAME = 09-203.P&P.DGN	USER NAME = S.A.P.	DESIGNED - G.J.C.	REVISED -	<p>FEHR-GRAHAM & ASSOCIATES, LLC ENGINEERING AND SCIENCE CONSULTANTS FREEPORT, IL ROCKFORD, IL ROCHELLE, IL MONROE, WI SPRINGFIELD, IL</p>	<p>PLAN & PROFILE - T.R. 55B</p> <p>TWP. RTE. 558 SECTION 07-16121-00-BR COUNTY IROQUOIS TOTAL SHEETS 33 SHEET NO. 3 CONTRACT NO. 87487</p>
PLOT SCALE = 50.0000' / IN.	CHECKED - A.L.S.	REVISED -			
PLOT DATE = 06/24/09	DATE - 09/19/11	REVISED -			
STA. 84+00.00 TO STA. 95+00.00			MARTINTON ROAD DIST. ILLINOIS		