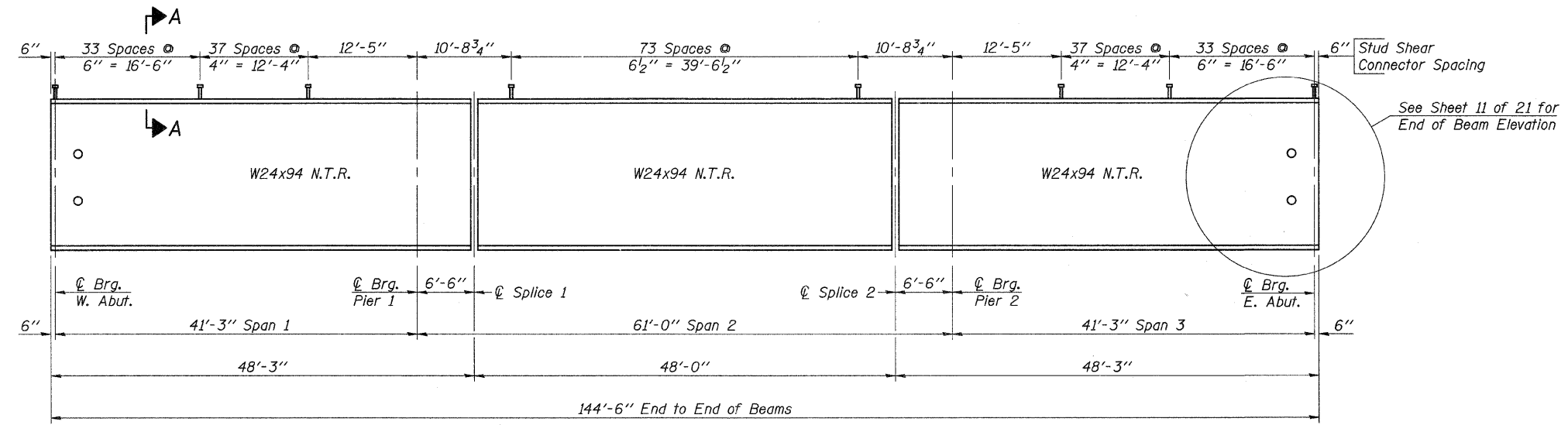


FRAMING PLAN



ELEVATION

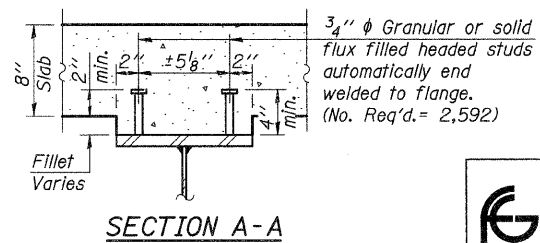
Notes: The designation "N.T.R." indicates that Notch Toughness Requirements are applicable. Load carrying components designated "N.T.R." shall conform to the Supplemental Requirements for Notch Toughness, Zone 2.

All diaphragms shall be installed as steel is erected and secured with erection pins and bolts except as otherwise noted. Individual diaphragms at supports may be temporarily disconnected to install bearing anchor rods.

Work this sheet with sheet 11 & 12 of 21.

TOP OF BEAM ELEVATIONS
(For Fabrication Only)

	Beam 1 or 6	Beam 2 or 5	Beam 3 or 4
℄ Brg. W. Abut.	633.58	633.67	633.75
℄ Brg. Pier #1	633.52	633.61	633.69
℄ Splice #1	633.51	633.60	633.68
℄ Splice #2	633.51	633.60	633.68
℄ Brg. Pier #2	633.52	633.61	633.69
℄ Brg. E. Abut.	633.58	633.67	633.75



SECTION A-A

DESIGNED -	A.L.S.
CHECKED -	A.R.K.
DRAWN -	S.A.P.
CHECKED -	A.L.S. & A.R.K.

STRUCTURAL STEEL
S.N. 038-4558

FEHR-GRAHAM & ASSOCIATES, LLC ENGINEERING AND SCIENCE CONSULTANTS FREEPORT, IL ROCKFORD, IL ROCHELLE, IL MONROE, WI SPRINGFIELD, IL 4440 ASH GROVE SPRINGFIELD, IL 62711 (217)-793-8600 www.fehr-graham.com	TWP. RTE.	SECTION	COUNTY	TOTAL SHEETS	SHEET NO.
	55B	07-16121-00-BR	IROQUOIS	33	14
			CONTRACT NO. 87487		
MARTINTON ROAD DIST. ILLINOIS			F.A. PROJ. BROS-075(145)		