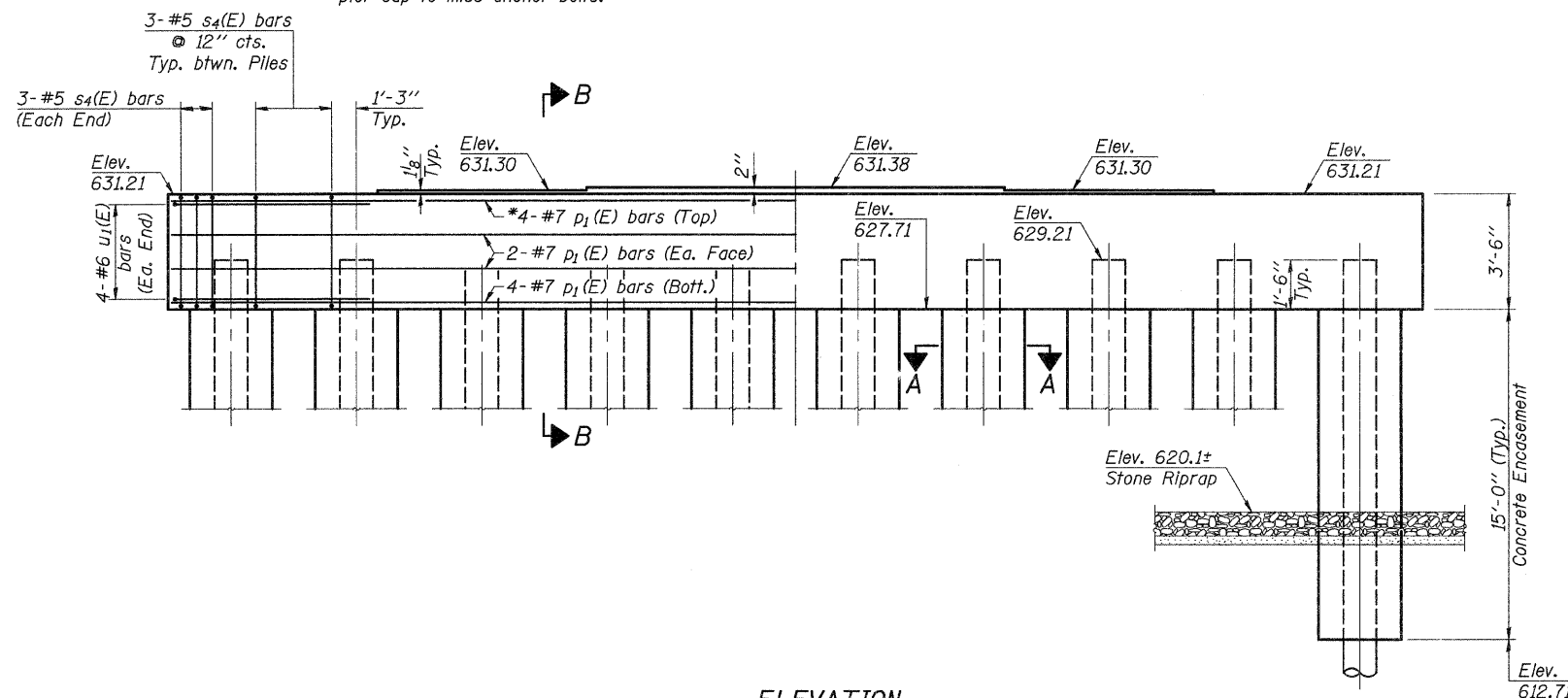
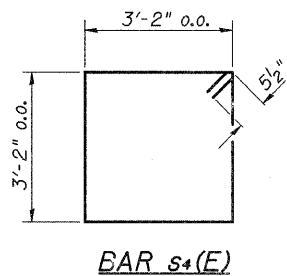
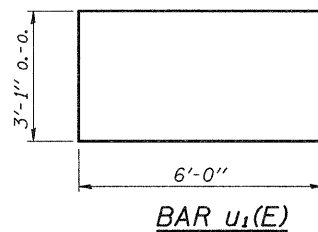


*Note: Space p₁(E) bars in top of pier cap to miss anchor bolts.

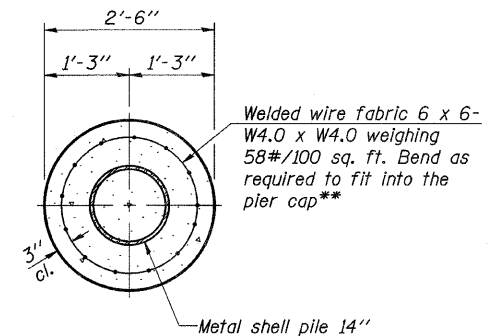
PLAN



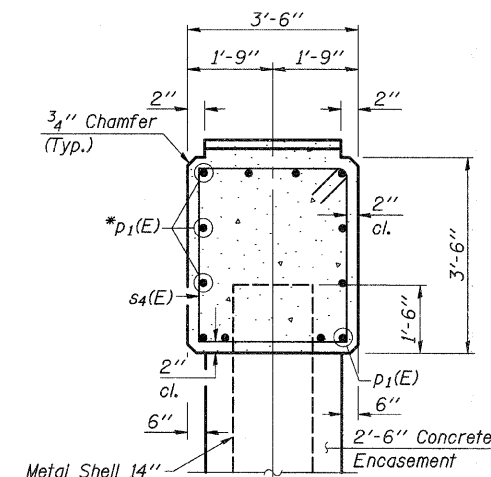
ELEVATION
(Looking East)



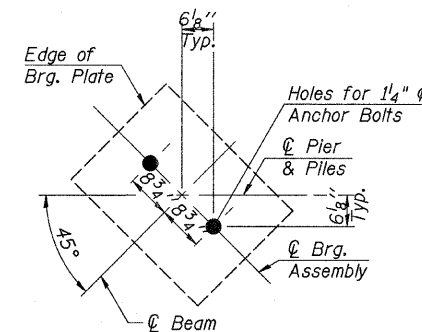
**The cost of Reinforcement is incidental to the cost of "Concrete Encasement". Extend Reinforcement 2'-0" into cap.



SECTION A-A
PILE ENCASEMENT DETAIL



SECTION B-B



ANCHOR BOLT
LAYOUT

BILL OF MATERIAL - PIER 1

BAR	NO.	SIZE	LENGTH	SHAPE
p ₁ (E)	12	#7	44'-8"	—
s ₄ (E)	33	#5	13'-7"	□
u ₁ (E)	8	#6	15'-1"	□
Concrete Structures			Cu. Yd.	20.9
Reinforcement Bars, Epoxy Coated			Pound	1,740
Furnishing Metal Shell Piles, 14" x 0.250"			Foot	510
Driving Piles			Foot	510
Concrete Encasement			Cu. Yd.	27.3

See Sheet 17 of 21 for Pile Details.
Reinforcement Bars designated (E) shall be epoxy coated.

PILE DATA

(See Special Provisions)

Type: Metal Shell - 14" Dia. x 0.250" walls
 No. Required: 10
 Nominal Required Bearing: 240 kips
 Factored Resistance Available: 130 kips
 Est. Length: 51 Foot/Pile

PIER 1
S.N. 038-4558

DESIGNED -	A.L.S.
CHECKED -	A.R.K.
DRAWN -	S.A.P.
CHECKED -	A.L.S. & A.R.K.

<p>ENGINEERING AND SCIENCE CONSULTANTS FREEPORT, IL ROCKFORD, IL ROCHELLE, IL MONROE, WI SPRINGFIELD, IL</p>	TWP. RTE.	SECTION	COUNTY	TOTAL SHEETS	SHEET NO.
	55B	07-16121-00-BR	IROQUOIS	33	19
CONTRACT NO. 87487			F.A. PROJ. BROS-075(145)		