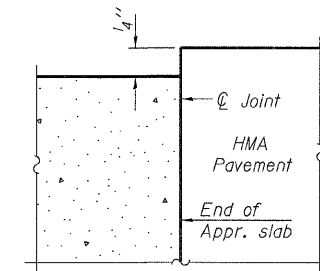
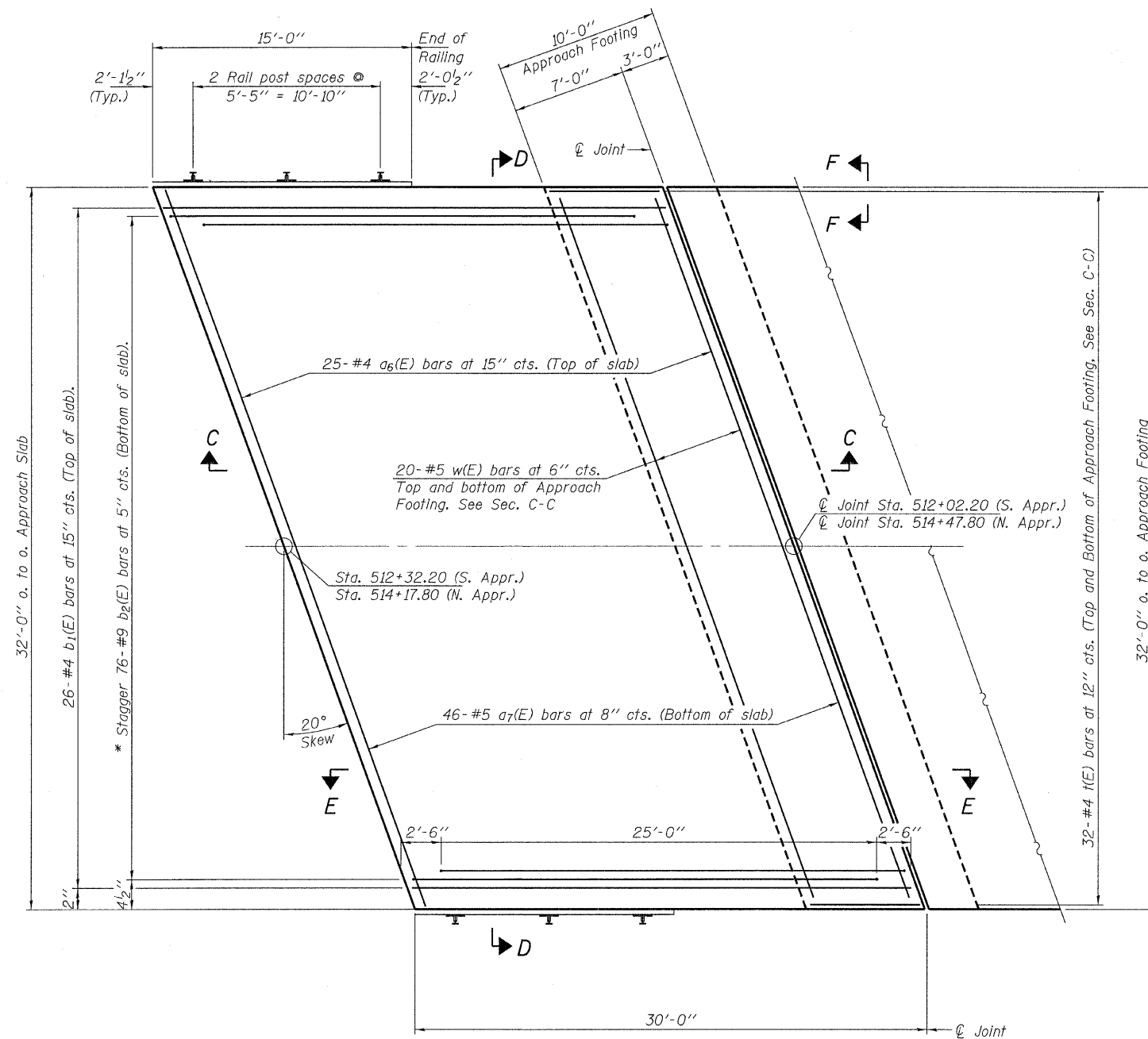


Notes:
See sheet 8 of 12 for Sections C-C & D-D and View E-E.
a(E) and a₁(E) bar spacings measured along \varnothing Rdwy.



FLEXIBLE PAVEMENT

DETAIL A

PLAN

* Tilt #9 b₁(E) bars as required to maintain clearance.

(Sheet 1 of 2)

FILE NAME = 100191-sht-bridge.dgn	USER NAME =	DESIGNED - A.S.L.	REVISED -	STATE OF ILLINOIS LIVINGSTON COUNTY HIGHWAY DEPARTMENT	BRIDGE APPROACH SLAB DETAILS STRUCTURE NO. 053-3457	F.A.S.	SECTION	COUNTY	TOTAL SHEETS	SHEET NO.	
HAMPTON, LENZINI AND RENWICK, INC. 3008 STEVENSON DRIVE, SUITE 201 SPRINGFIELD, ILLINOIS 62703	PLOT SCALE =	CHECKED - S.W.M.	REVISED -			351	08-00145-05-BR	LIVINGSTON	29	24	
HLR ILLINOIS PROFESSIONAL DESIGN FIRM L3 / PE / SE CORP. 184300089	PLOT DATE = 2/14/2012	DRAWN - D.A.B.	REVISED -			SOUTH 7TH STREET		CONTRACT NO. 87494		ILLINOIS FED. AID PROJECT	
		CHECKED - S.W.M.	REVISED -			SHEET NO. 7 OF 12 SHEETS					