

F.A. ROUTE NO.	SECTION	COUNTY	SHEET NO.	TOTAL SHEETS
5958	10-00024-02-RS	GRUNDY	1	4
ILLINOIS PROJECT RS-0063(110)				

CONTRACT NO. 87504

**INDEX OF SHEETS**

- 1 COVER SHEET, INDEX OF SHEETS, STANDARDS, LOCATION MAP
- 2 SUMMARY OF QUANTITIES, GENERAL NOTES, HOT-MIX ASPHALT DATA TABLE, CLASS D PATCHES DETAIL, RATES OF APPLICATION
- 3 TYPICAL CROSS SECTIONS, INTERSECTION DETAIL AT U.S. ROUTE 6
- 4 TYPICAL ENTRANCE DETAIL, TYPICAL INTERSECTION DETAIL, TYPICAL MAILBOX TURNOUT DETAIL, TYPICAL TAPER AT BUTT JOINT, INTERSECTION DETAIL AT NETTLE CREEK DRIVE

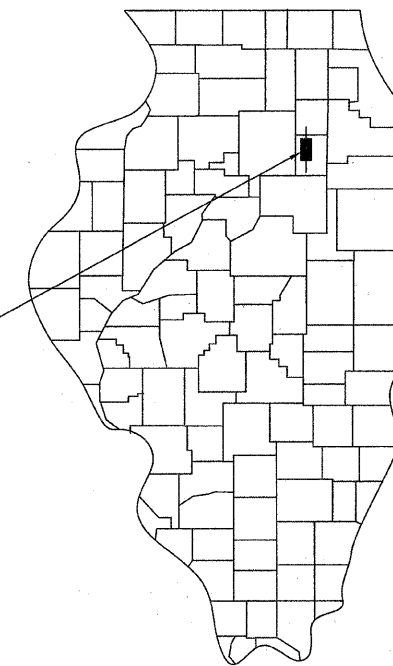
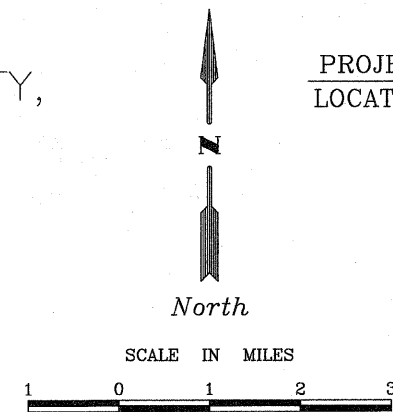
STATE OF ILLINOIS  
DEPARTMENT OF TRANSPORTATION  
**PLANS FOR  
PROPOSED LOCAL AGENCY IMPROVEMENT  
FEDERAL-AID SECONDARY PROJECT**

F.A.U. ROUTE 5958, C.H. V12 & C28,  
SARATOGA ROAD & OLD STAGE ROAD,  
SECTION 10-00024-02-RS, GRUNDY COUNTY,  
PROJECT RS-0063(110)  
JOB NUMBER C93-032-12

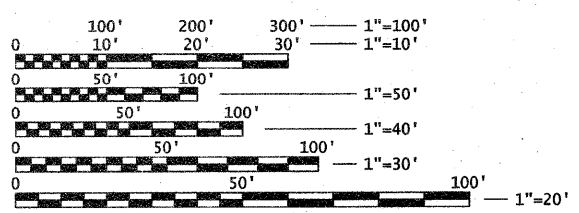
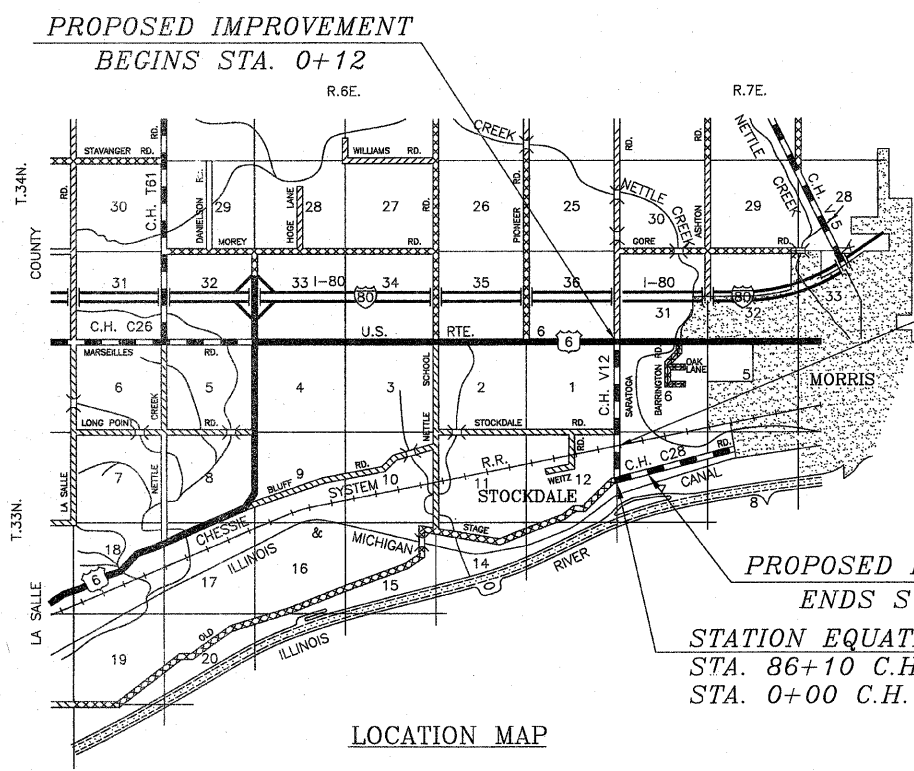
**RURAL MAJOR COLLECTOR  
DESIGN SPEED - 50 M.P.H.**

**STANDARDS**

- 000001-06 STANDARD SYMBOLS, ABBREVIATIONS & SYMBOLS, 8 SHEETS
- 667101-02 PERMANENT SURVEY MARKERS
- 701306-03 LANE CLOSURE, 2 LANE, 2 WAY, SLOW MOVING OPERATIONS, DAY ONLY
- 701311-03 LANE CLOSURE, 2 LANE, 2 WAY, MOVING OPERATION, DAY ONLY
- 701901-02 TRAFFIC CONTROL DEVICES, 3 SHEETS
- 780001-03 TYPICAL PAVEMENT MARKINGS, 2 SHEETS
- 781001-03 TYPICAL APPLICATION, RAISED REFLECTIVE PAVEMENT MARKERS



LOCATION OF SECTION INDICATED THUS: - ■ -



FULL SIZE PLANS HAVE BEEN PREPARED USING STANDARD ENGINEERING SALES. REDUCED SIZED PLANS WILL NOT CONFORM TO STANDARD SCALES. IN MAKING MEASUREMENT ON REDUCED PLANS, THE ABOVE SCALES MAY BE USED.

CONTRACT NO. 87504

GROSS LENGTH:	10,848.00 FEET = 2.054 MILES
OMISSIONS:	22.00 FEET = 0.004 MILES
NET LENGTH:	10,826.00 FEET = 2.050 MILES

**PREVIOUS CONSTRUCTION SECTIONS**

S. A. 2	24MFT	1950
C. H. 2	SM(240)NON-MFT	1975
C. H. C28	84-00083-00-WR	1985
C. H. V12	93-00024-02-RS	1995
C. H. C28	97-00000-00-RS	1997

**UTILITIES**

**J.U.L.I.E. SYSTEM** - THE TOLL FREE TELEPHONE NUMBER FOR JOINT UTILITY LOCATING INFORMATION FOR EXCAVATION IS 1-800-892-0123

THE ACCEPTANCE OF THIS PROJECT IS BASED ON THE MINIMUM DESIGN CRITERIA FOR LOCAL AGENCY PAVEMENT PRESERVATION POLICY.

P.E. SEAL

THESE PLANS WERE PREPARED BY ME OR BY A FULL TIME MEMBER OF MY STAFF WORKING UNDER MY PERSONAL SUPERVISION.

APPROVED April 2 20 12  
*Craig J. Cassem*  
CRAIG J. CASSEM  
GRUNDY COUNTY ENGINEER

PASSED April 9, 2012  
*Jim Miller*  
DISTRICT THREE  
IMPLEMENTATION ENGINEER

RELEASING FOR BID April 9, 2012  
BASED ON LIMITED REVIEW  
*Eric J. ...*  
DEPUTY DIRECTOR OF HIGHWAYS  
REGION TWO ENGINEER

STATE OF ILLINOIS  
DEPARTMENT OF TRANSPORTATION