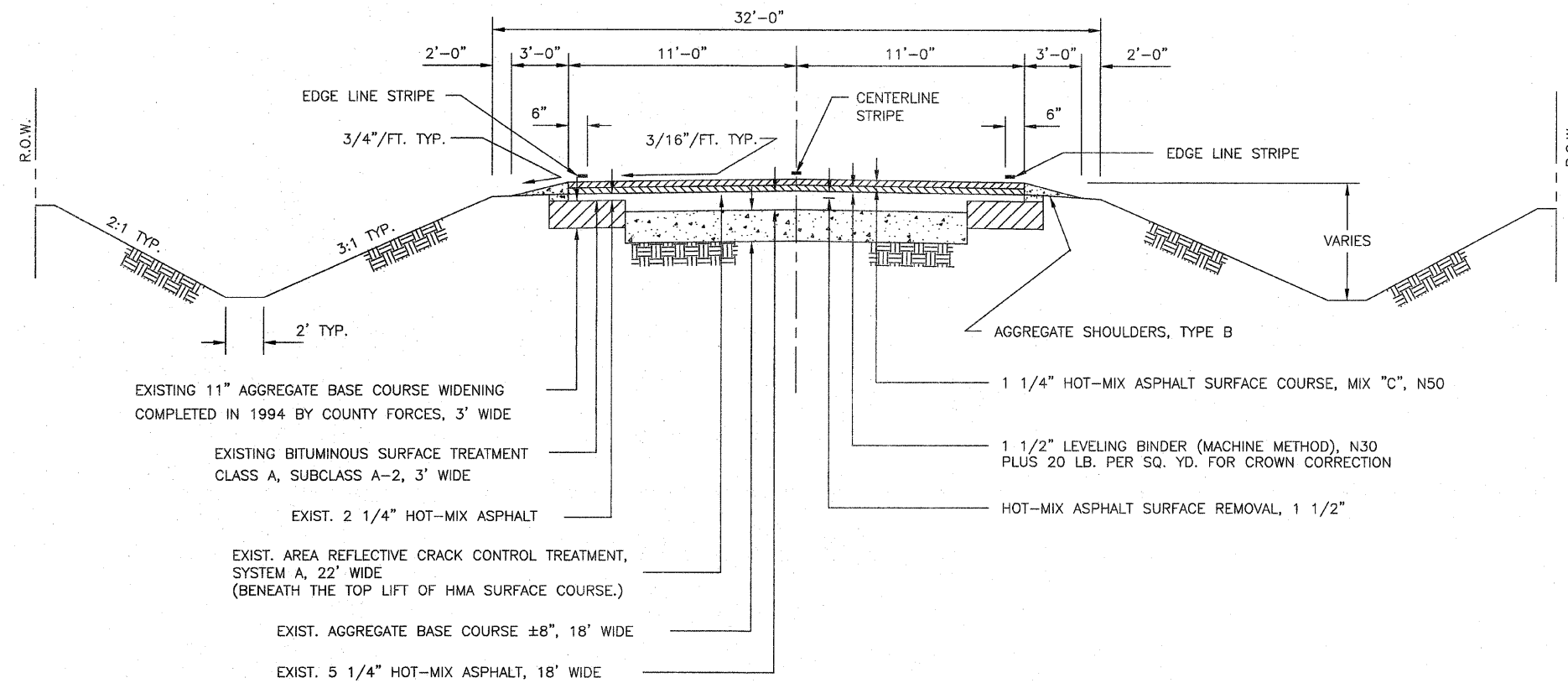
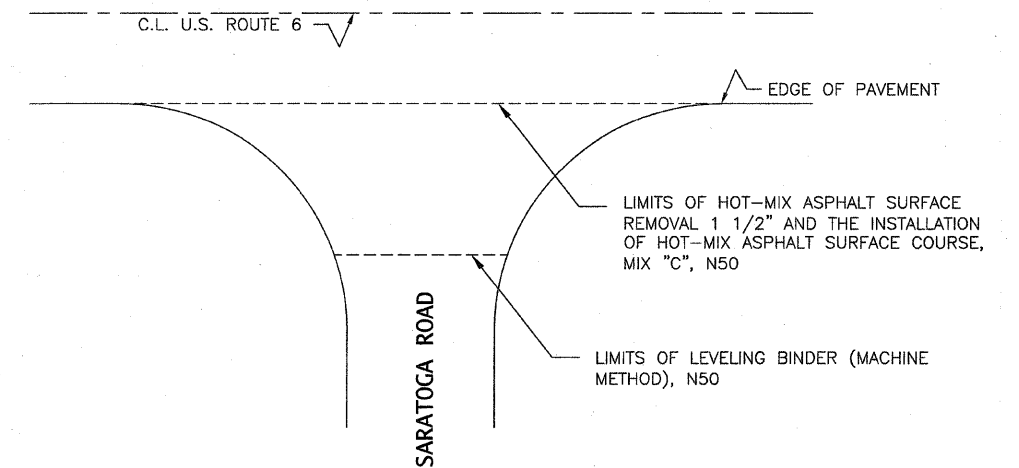


CONTRACT NO. 87504

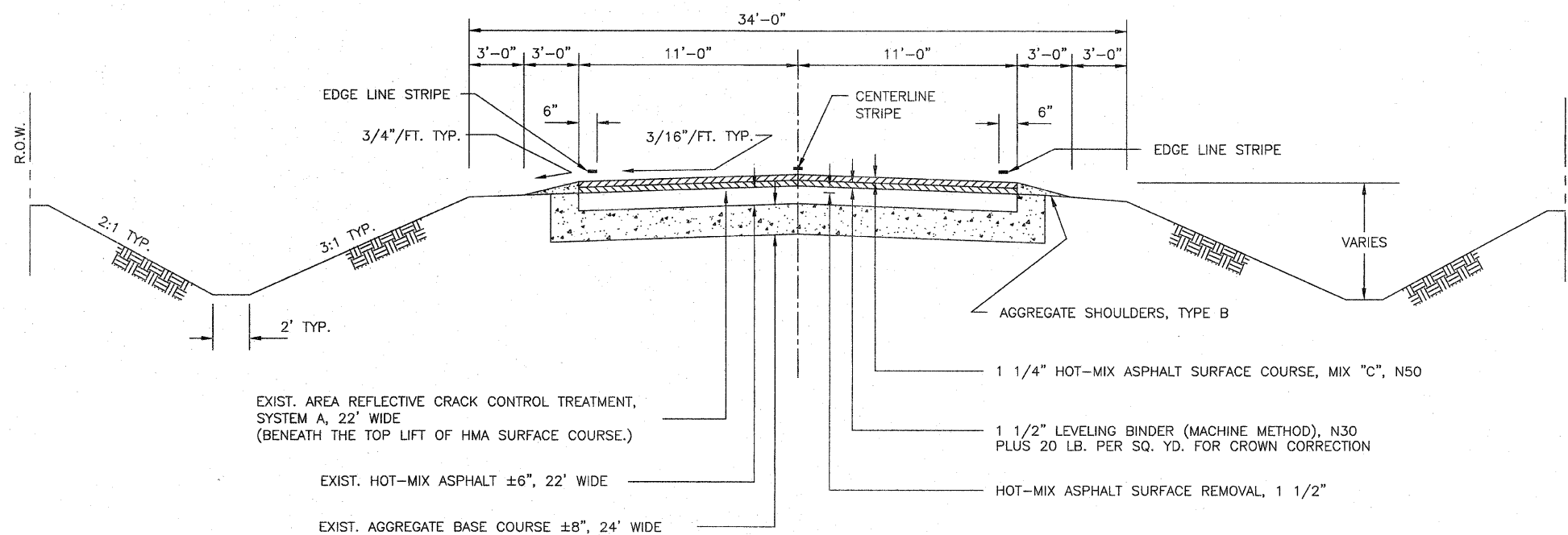
TYPICAL CROSS-SECTION DETAIL - C.H. V12



INTERSECTION DETAIL AT U.S. ROUTE 6



TYPICAL CROSS-SECTION DETAIL - C.H. C28



STATE OF ILLINOIS COUNTY OF GRUNDY COUNTY ENGINEER		
DRAWN: D.M.B.	CHECKED: C.J.C.	SCALE: None
REVISED:	3-27-12	DATE: 2-3-12