

INDEX OF SHEETS

- 1 COVER SHEET, INDEX OF SHEETS, STANDARDS, LOCATION MAP
- 2 SUMMARY OF QUANTITIES, GENERAL NOTES, HOT-MIX ASPHALT DATA TABLE, CLASS D PATCHES DETAIL, RATES OF APPLICATION
- 3 TYPICAL CROSS SECTIONS, INTERSECTION DETAIL AT U.S. ROUTE 6
- 4 TYPICAL ENTRANCE DETAIL, TYPICAL INTERSECTION DETAIL, TYPICAL MAILBOX TURNOUT DETAIL, TYPICAL TAPER AT BUTT JOINT, INTERSECTION DETAIL AT NETTLE CREEK DRIVE

STANDARDS

- 000001-06 STANDARD SYMBOLS, ABBREVIATIONS & SYMBOLS, 8 SHEETS
- 667101-02 PERMANENT SURVEY MARKERS
- 701306-03 LANE CLOSURE, 2 LANE, 2 WAY, SLOW MOVING OPERATIONS, DAY ONLY
- 701311-03 LANE CLOSURE, 2 LANE, 2 WAY, MOVING OPERATION, DAY ONLY
- 701901-02 TRAFFIC CONTROL DEVICES, 3 SHEETS
- 780001-03 TYPICAL PAVEMENT MARKINGS, 2 SHEETS
- 781001-03 TYPICAL APPLICATION, RAISED REFLECTIVE PAVEMENT MARKERS

06-15-12 LETTING ITEM 050

STATE OF ILLINOIS
DEPARTMENT OF TRANSPORTATION

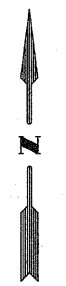
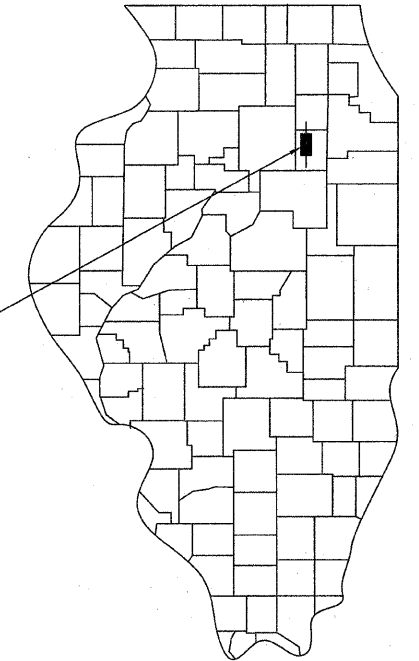
PLANS FOR
PROPOSED LOCAL AGENCY IMPROVEMENT
FEDERAL-AID SECONDARY PROJECT

F.A.U. ROUTE 5958, C.H. V12 & C28,
SARATOGA ROAD & OLD STAGE ROAD,
SECTION 10-00024-02-RS, GRUNDY COUNTY,
PROJECT RS-0063(110)
JOB NUMBER C93-032-12

RURAL MAJOR COLLECTOR
DESIGN SPEED - 50 M.P.H.

F.A. ROUTE NO.	SECTION	COUNTY	SHEET NO.	TOTAL SHEETS
5958	10-00024-02-RS	GRUNDY	1	4
ILLINOIS PROJECT RS-0063(110)				

CONTRACT NO. 87504



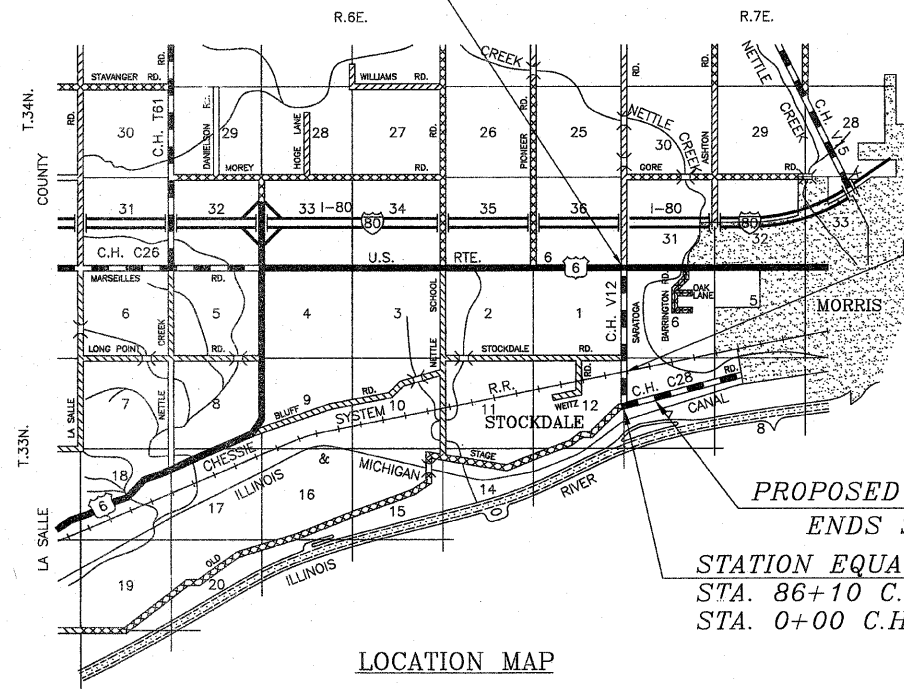
North

SCALE IN MILES



LOCATION OF SECTION INDICATED THUS: - [Symbol] -

PROPOSED IMPROVEMENT
BEGINS STA. 0+12



OMISSION
STA. 56+57 TO 56+79

PROPOSED IMPROVEMENT
ENDS STA. 22+50

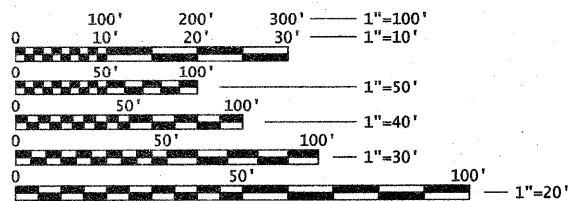
STATION EQUATION
STA. 86+10 C.H. V12 =
STA. 0+00 C.H. C28

LOCATION MAP

GROSS LENGTH: 10,848.00 FEET = 2.054 MILES
OMISSIONS: 22.00 FEET = 0.004 MILES
NET LENGTH: 10,826.00 FEET = 2.050 MILES

PREVIOUS CONSTRUCTION SECTIONS

S.A. 2	24MFT	1950
C.H. 2	5M(240)NON-MFT	1975
C.H. C28	84-00083-00-WR	1985
C.H. V12	93-00024-02-RS	1995
C.H. C28	97-00000-00-RS	1997



FULL SIZE PLANS HAVE BEEN PREPARED USING STANDARD ENGINEERING SALES. REDUCED SIZED PLANS WILL NOT CONFORM TO STANDARD SCALES. IN MAKING MEASUREMENT ON REDUCED PLANS, THE ABOVE SCALES MAY BE USED.

CONTRACT NO. 87504

UTILITIES

J.U.L.I.E. SYSTEM - THE TOLL FREE TELEPHONE NUMBER FOR JOINT UTILITY LOCATING INFORMATION FOR EXCAVATION IS 1-800-892-0123

THE ACCEPTANCE OF THIS PROJECT IS BASED ON THE MINIMUM DESIGN CRITERIA FOR LOCAL AGENCY PAVEMENT PRESERVATION POLICY.

P.E. SEAL



THESE PLANS WERE PREPARED BY ME OR BY A FULL TIME MEMBER OF MY STAFF WORKING UNDER MY PERSONAL SUPERVISION.

APPROVED April 2 20 12

CRAIG J. CASSEM
GRUNDY COUNTY ENGINEER

PASSED April 9, 2012

DISTRICT THREE
IMPLEMENTATION ENGINEER

RELEASING FOR BID April 9, 2012
BASED ON LIMITED REVIEW

DEPUTY DIRECTOR OF HIGHWAYS
REGION TWO ENGINEER

STATE OF ILLINOIS
DEPARTMENT OF TRANSPORTATION

SUMMARY OF QUANTITIES

CONSTRUCTION CODE 0005

CONTRACT NO. 87504

CODE NO.	ITEM	UNIT	QUANTITY
40600100*	BITUMINOUS MATERIAL (PRIME COAT)	GALLON	2,780
40600300	AGGREGATE (PRIME COAT)	TON	56
40600625	LEVELING BINDER (MACHINE METHOD), N50	TON	2,615
40600982*	HOT-MIX ASPHALT SURFACE REMOVAL - BUTT JOINT	SQ YD	575
40600990	TEMPORARY RAMP	SQ YD	158
40603310	HOT-MIX ASPHALT SURFACE COURSE, MIX "C", N50	TON	1,950
40800050*	INCIDENTAL HOT-MIX ASPHALT SURFACING	TON	99
44000155	HOT-MIX ASPHALT SURFACE REMOVAL, 1 1/2"	SQ YD	28,365
44201747	CLASS D PATCHES, TYPE IV, 8 INCH	SQ YD	320
48101200	AGGREGATE SHOULDERS, TYPE B	TON	1,690
67100100	MOBILIZATION	L SUM	1
70100460	TRAFFIC CONTROL AND PROTECTION, STANDARD 701306	L SUM	1
70300100*	SHORT-TERM PAVEMENT MARKING	FOOT	3,250
70300220	TEMPORARY PAVEMENT MARKING - LINE 4"	FOOT	9,100
△ 78005100	EPOXY PAVEMENT MARKING - LETTERS AND SYMBOLS	SQ FT	154
△ 78005110*	EPOXY PAVEMENT MARKING LINE - LINE 4"	FOOT	31,560
△ 78005180*	EPOXY PAVEMENT MARKING LINE - LINE 24"	FOOT	140
△ 78100100*	RAISED REFLECTIVE PAVEMENT MARKER	EACH	140
△ 78300200	RAISED REFLECTIVE PAVEMENT MARKER REMOVAL	EACH	140
Z0048665*	RAILROAD PROTECTIVE LIABILITY INSURANCE	L SUM	1
Z0053700*	RESETTING SURVEY MONUMENTS	EACH	4

THE THICKNESS OF HOT-MIX ASPHALT MIXTURES SHOWN ON THE PLANS IS THE NOMINAL THICKNESS. DEVIATIONS FROM THE NOMINAL THICKNESS WILL BE PERMITTED WHEN SUCH DEVIATIONS OCCUR DUE TO IRREGULARITIES IN THE EXISTING SURFACE OR BASE ON WHICH THE BITUMINOUS MIXTURE IS PLACED.

THE BITUMINOUS SURFACE OF ALL MAILBOX TURNOUTS, PRIVATE ENTRANCES, COMMERCIAL ENTRANCES, AND SIDE ROADS SHALL BE MADE NEATLY AND IN A WORKMANLIKE MANNER; AND SHALL ACCURATELY CONFORM TO THE SHAPES AND DIMENSIONS SHOWN IN THE PLAN DETAILS. IF REQUIRED BY THE ENGINEER, THE CONTRACTOR WILL BE REQUIRED TO SAW CUT THE BITUMINOUS SURFACE TO CONFORM TO THE SHAPES AND DIMENSIONS SHOWN IN THE PLANS DETAILS. THIS WORK SHALL BE INCIDENTAL TO THE BITUMINOUS QUANTITIES.

THE ENGINEER SHALL BE THE SOLE JUDGE CONCERNING CURING TIME FOR THE VARIOUS BITUMINOUS LIFTS.

FOR ALL SHORT-TERM PAVEMENT MARKINGS ON FINAL SURFACES (I.E., MAINLINE PAVEMENT), ONLY SHORT-TERM PAVEMENT MARKING TAPE SHALL BE USED.

WHERE SECTION OR SUBSECTION MONUMENTS ARE ENCOUNTERED, THE ENGINEER SHALL BE NOTIFIED BEFORE SUCH MONUMENTS ARE REMOVED. THE CONTRACTOR SHALL PROTECT AND CAREFULLY PRESERVE ALL MONUMENTS UNTIL AN AUTHORIZED SURVEYOR OR AGENT HAS WITNESSED OR OTHERWISE REFERENCED THEIR LOCATION. THE CONTRACTOR WILL BE RESPONSIBLE FOR HAVING AN AUTHORIZED SURVEYOR RE-ESTABLISH ANY SECTION OR SUB-SECTION MONUMENTS DESTROYED BY HIS OPERATIONS.

ANY REFERENCE TO A STANDARD IN THESE PLANS SHALL BE INTERPRETED TO MEAN THE EDITION AS INDICATED BY THE SUB-NUMBER LISTED IN THE INDEX OF SHEETS OR THE COPY OF THE STANDARD INCLUDED IN THESE PLANS.

* DENOTES SPECIAL PROVISION
 △ DENOTES SPECIALTY ITEM

HOT-MIX ASPHALT DATA TABLE

	SURFACE	LEVELING BINDER (MACHINE METHOD)	INCIDENTAL SURFACING
PG GRADE	PG58-22	PG58-22	PG58-22
MAX % RAP ALLOWABLE**	15%	15%	15%
DESIGN AIR VOIDS	4.0% @ N50	4.0% @ N50	4.0% @ N50
MIXTURE COMPOSITION	IL 12.5 OR IL 9.5	IL 9.5	IL 12.5 OR IL 9.5
FRICTION AGGREGATE	MIXTURE C		MIXTURE C
DENSITY TEST METHOD	CORRELATION	NUCLEAR / CORES	SATISFACTION OF ENGINEER

TABLE FOR
CLASS D PATCHES, TYPE IV, 8 INCH

STARTS NEAR	LENGTH IN FEET	WIDTH IN FEET	APPROX. QUANTITY
STA. 1+10	46	11.25	58 SQ.YD.
STA. 2+86	98	11.25	123 SQ.YD.
STA. 5+05	78	11.25	98 SQ.YD.
TOTAL			279 SQ.YD.

THE FOLLOWING RATES OF APPLICATION HAVE BEEN ASSUMED IN CALCULATING PLAN QUANTITIES:

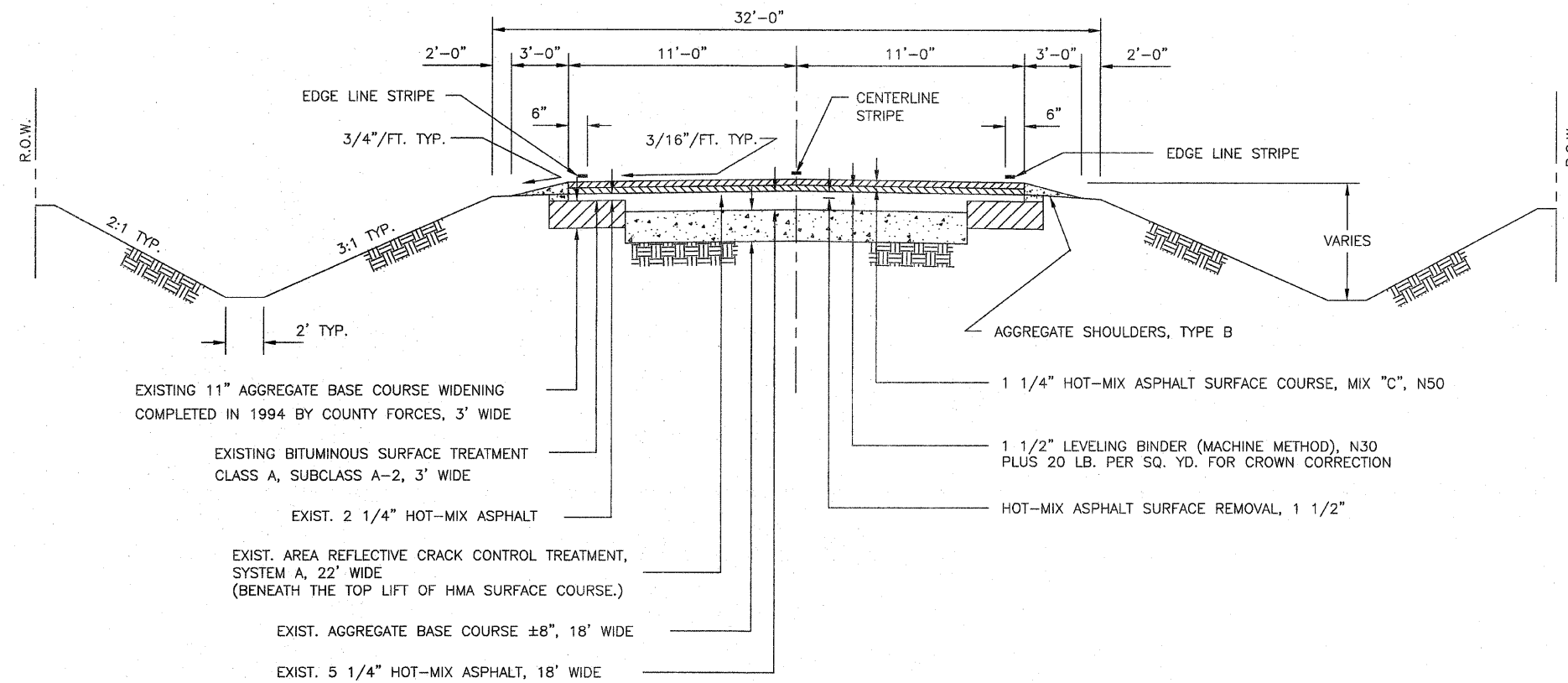
GRANULAR MATERIALS	2.10	TON/CU YD
BITUMINOUS MATERIALS PRIME COAT	0.10	GAL/SQ YD (RC 70) OR 0.40 GAL/SQ YD (MC 30)
AGGREGATE PRIME COAT	0.002	TONS/SQ YD
HOT-MIX ASPHALT - WIDENING, LEVEL BINDER, BINDER AND SURFACE COURSE	112	LBS/SQ YD/INCH
SHORT-TERM PAVEMENT MARKING	10	FT/100 FT OF APPLICATION

** IF RAP OPTION IS SELECTED, THE ASPHALT CEMENT GRADE MAY NEED TO BE ADJUSTED. THIS WILL BE DETERMINED BY THE ENGINEER.

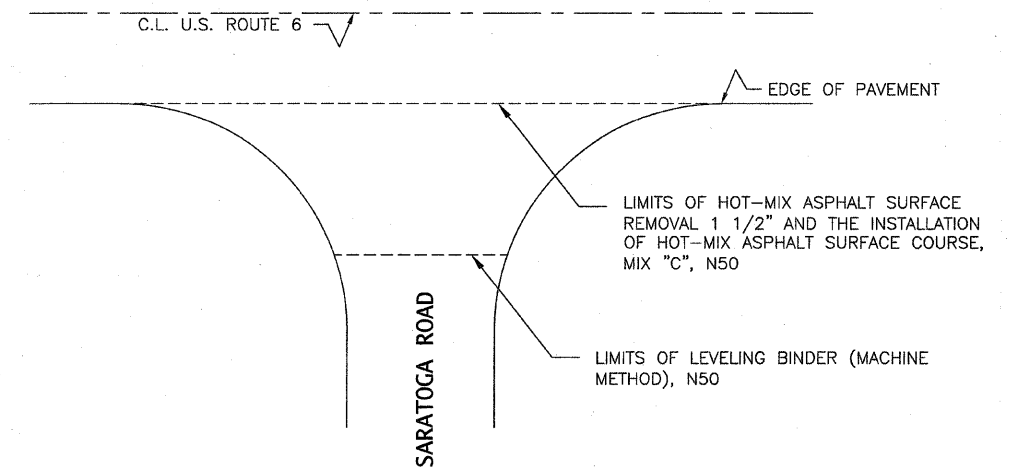
STATE OF ILLINOIS COUNTY OF GRUNDY COUNTY ENGINEER			
DRAWN: D.M.B.	CHECKED: C.J.C.	SCALE: NONE	DATE: 2-3-12
REVISED:	3-27-12		

CONTRACT NO. 87504

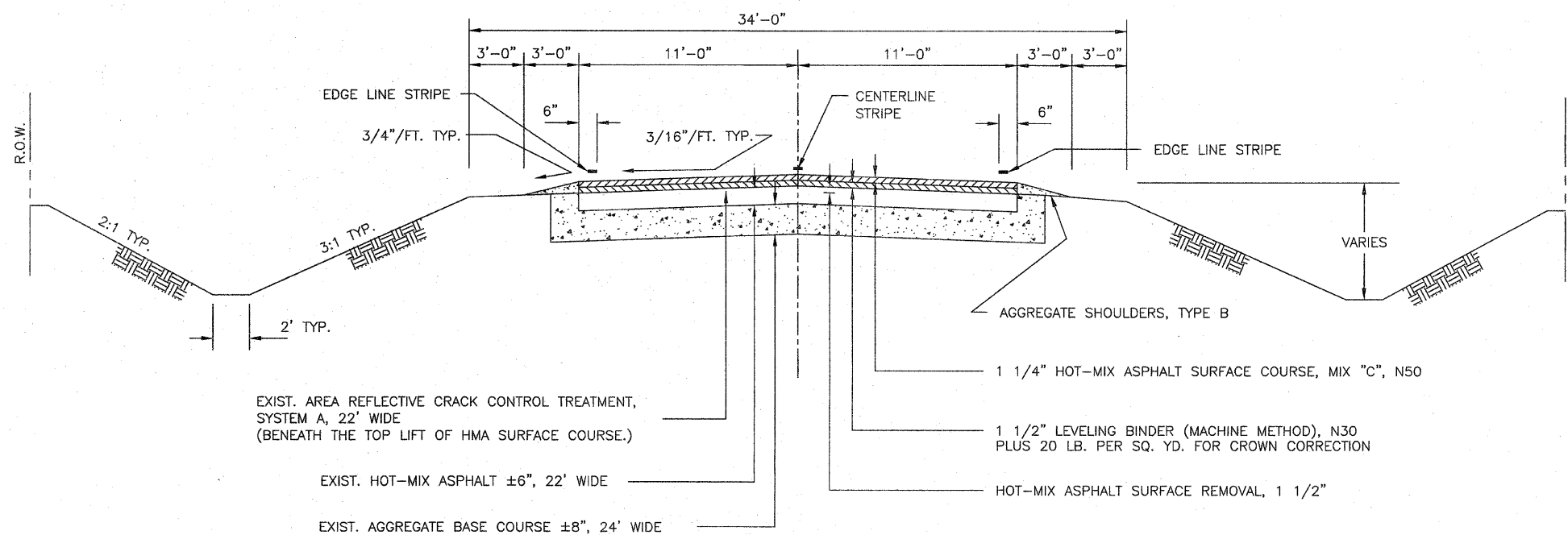
TYPICAL CROSS-SECTION DETAIL - C.H. V12



INTERSECTION DETAIL AT U.S. ROUTE 6



TYPICAL CROSS-SECTION DETAIL - C.H. C28



STATE OF ILLINOIS COUNTY OF GRUNDY COUNTY ENGINEER		
DRAWN: D.M.B.	CHECKED: C.J.C.	SCALE: None
REVISED:	3-27-12	DATE: 2-3-12

CONTRACT NO. 87504

TYPICAL MAILBOX TURNOUT DETAIL

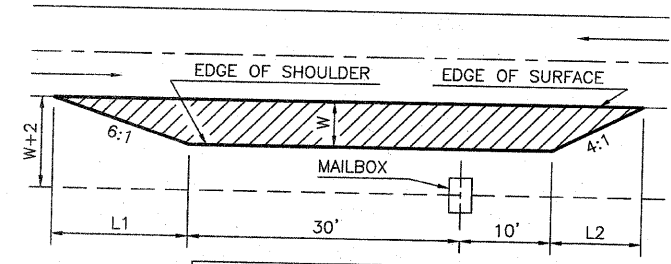
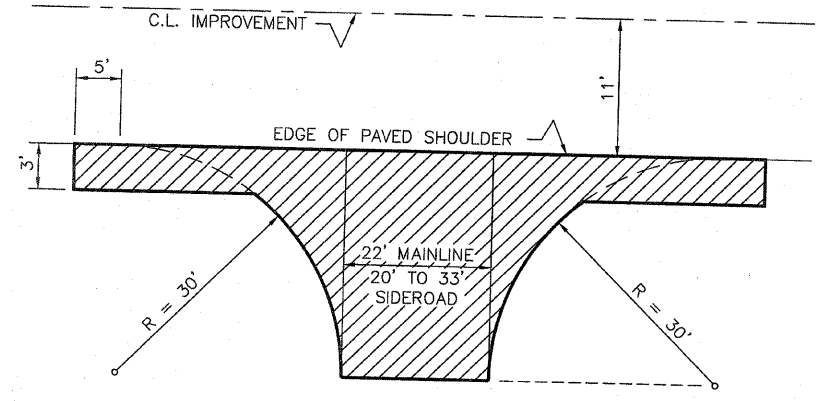


TABLE					
W	8'	6'	5'	4'	3'
L1	48'	36'	30'	24'	18'
L2	32'	24'	20'	16'	12'
SQ.YDS.	71	47	36	27	18

STATION	SIDE	SQ.YD.
23+45	C.H. V12	
52+15	RT	18
80+20	LT	18
	C.H. C28	
	NONE	
TOTALS		54

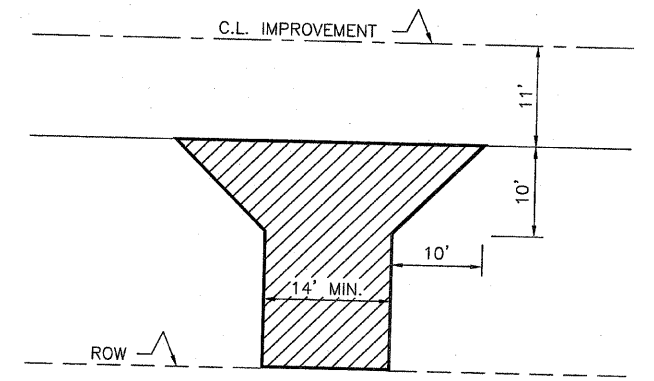
TYPICAL INTERSECTION DETAIL



NAME	STATION	SIDE	SQ.YD.	TONS
ILLINOIS RTE 6	0+12	C.L.	120	7
NETTLE CREEK DRIVE	29+60	RT	120	7
COUNTRY CLUB LANE	47+10	RT	120	7
STOCKDALE ROAD	52+73	RT	120	7
OLD STAGE ROAD	0+00	C.L.	120	7
TOTALS			600	35

35 TONS EACH LIFT OF HOT-MIX ASPHALT

TYPICAL PRIVATE ENTRANCE



3/16" / FT. TYP.

3/4" / FT. TYP.

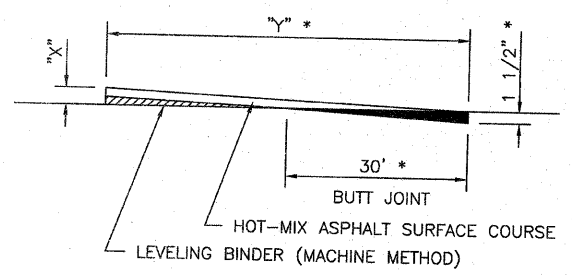
3:1 TYP.

1 1/2" HOT-MIX ASPHALT.
 NOTE: A BUTT JOINT NEAR THE R.O.W. MAY BE NECESSARY.

INCIDENTAL BITUMINOUS SURFACING

STATION	SIDE	TYPE	SQ.YD.	TONS
23+60	LT	P.E.	56	C.H. V12 10
51+40	LT	P.E.	56	10
79+95	LT	P.E.	56	10
22+00	LT	P.E.	56	C.H. C28 10
TOTALS			224	40

TYPICAL TAPER AT BUTT JOINT

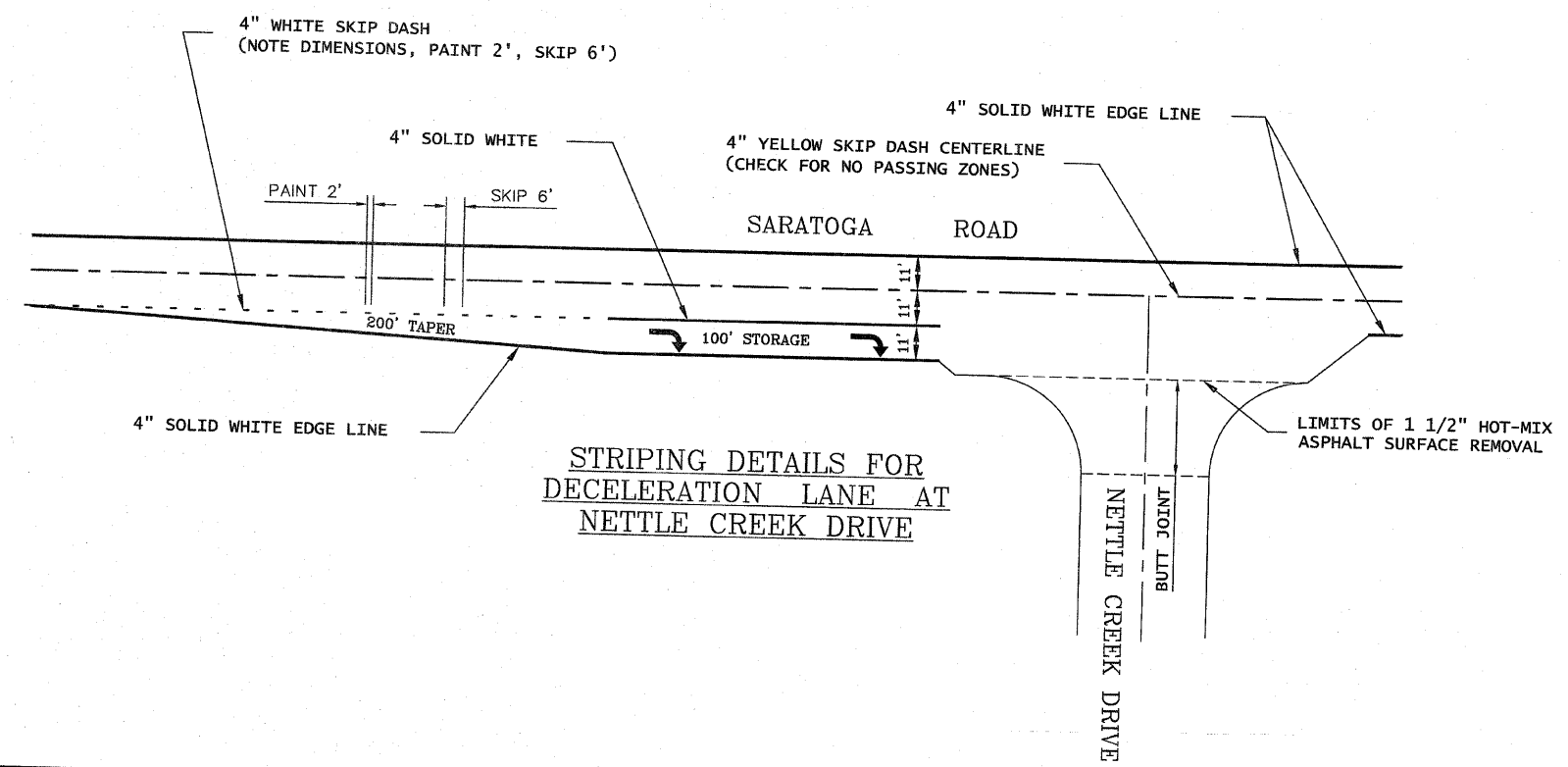


"x" = PROPOSED PAVEMENT THICKNESS

"x"	"y"
1"	20'
1 1/2"	30'
2"	40'
2 1/2"	50'
3"	60'
3 1/2"	70'
4"	80'

* NOTE: BUTT JOINTS AT BRIDGES SHALL BE 2" TO 0" IN 50', "Y" SHALL BE 80'. BUTT JOINTS AT PRIVATE AND COMMERCIAL ENTRANCES SHALL BE 18".

STATION	SIDE	SQ.YD.	STATION	SIDE	SQ.YD.
0+12	C.H. V12		0+00	C.H. C28	80
29+60	C.L.	100	22+50	RT	80
47+10	RT	40			
52+73	RT	50			
56+57	RT	50			
56+79	C.L.	80			
	C.L.	80			
			3 ENTRANCES @ 5 SQ.YDS. =		15
			TOTAL		575



STRIPING DETAILS FOR DECELERATION LANE AT NETTLE CREEK DRIVE

TYPICAL FIELD ENTRANCE DETAIL

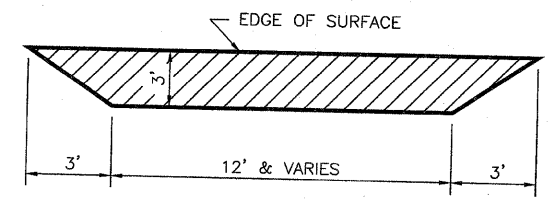


TABLE OF FIELD ENTRANCES

STATION	SIDE	SQ.YD.
VARIES	LT & RT	12 @ 6
TOTAL		72