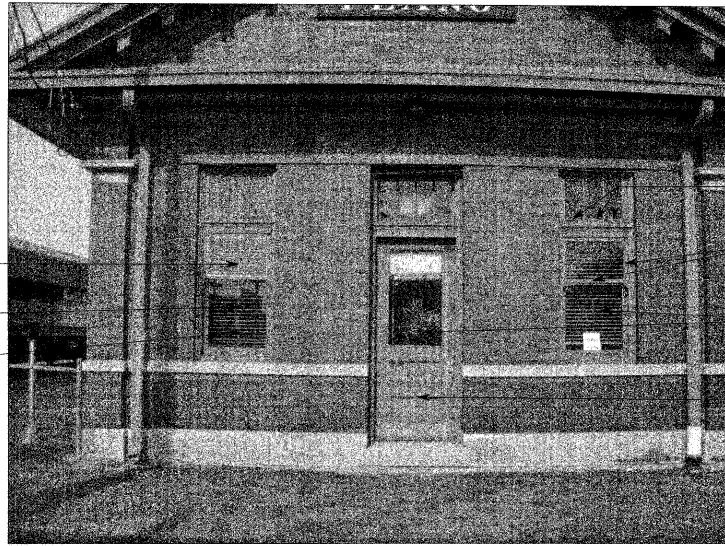


**KEY - BUILDING NOTES**

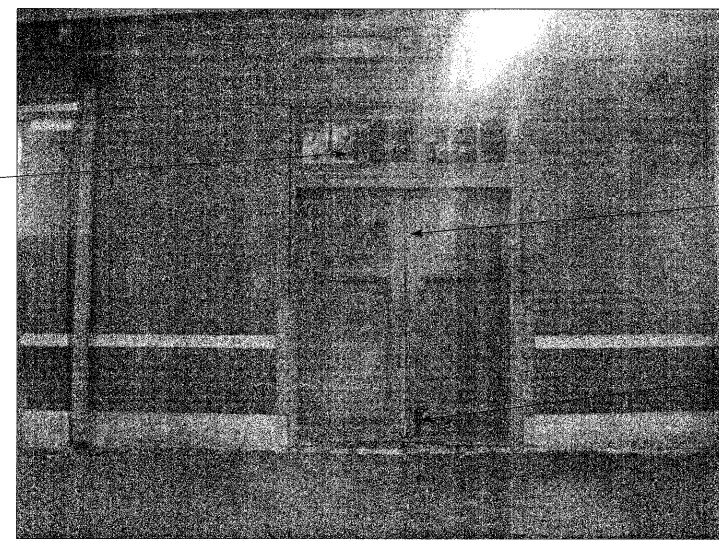
- ① SCRAPE, FILL, PRIME AND PAINT WOOD SASH
- ② REMOVE & REPLACE WINDOW PUTTY
- ③ REMOVE, MATCH & REPLACE WOOD STOP
- ④ REMOVE & REPLACE GLASS



EAST ELEVATION

ALL ②  
ALL ①  
ALL ②

②  
②  
① ALL  
③

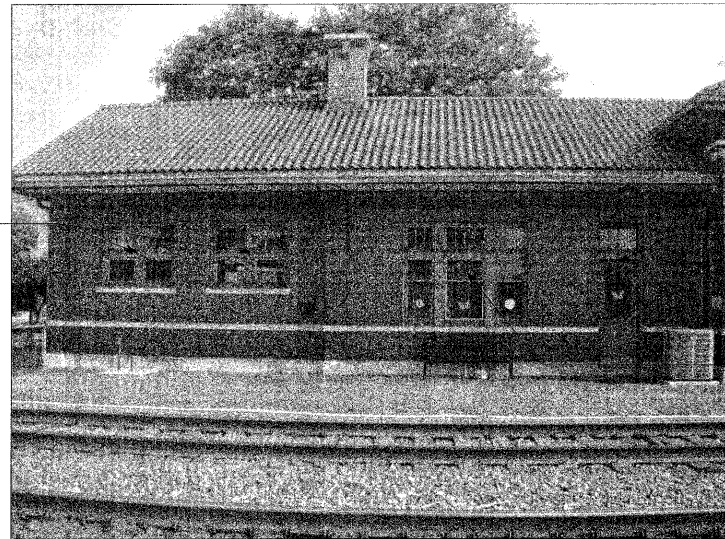


WEST ELEVATION

④

① ALL  
②

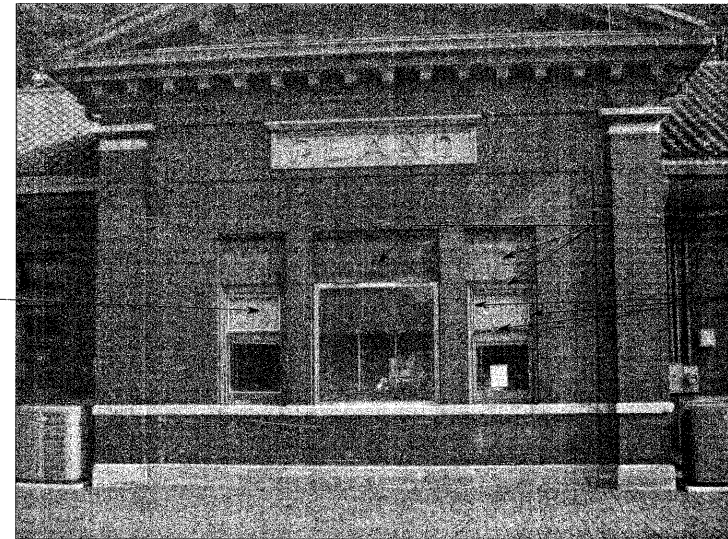
REPLACE STILE AND RAIL



SOUTH ELEVATION

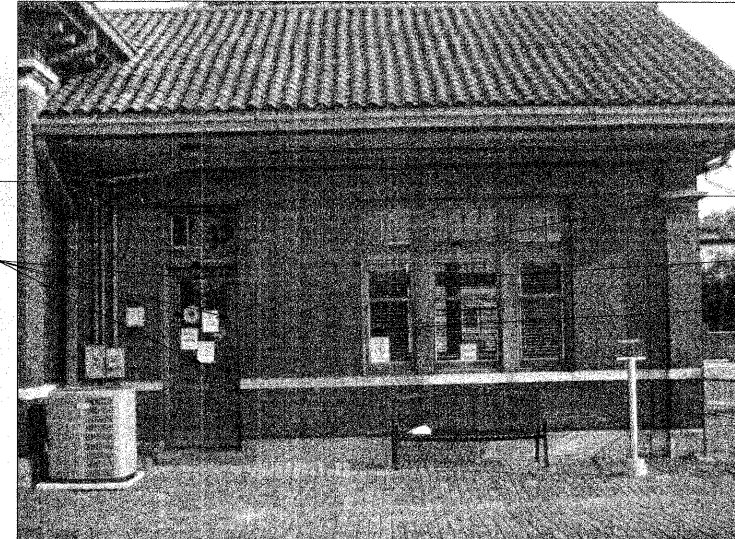
ALL ①  
②

① ALL  
① ALL  
②



SOUTH ELEVATION

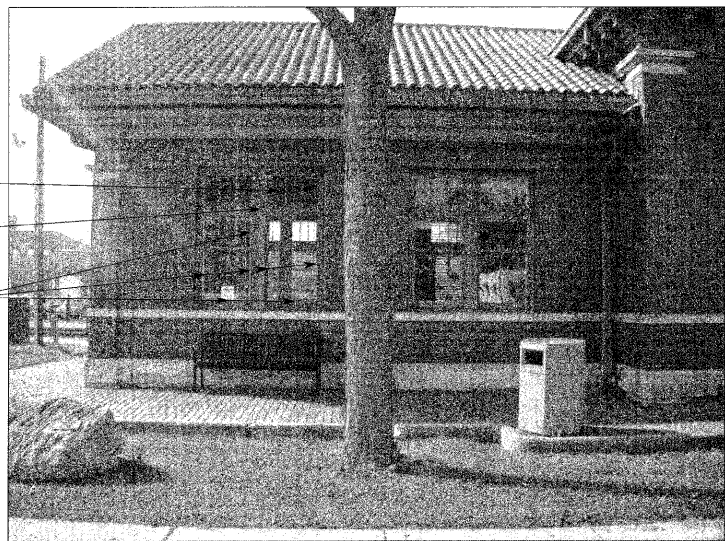
ALL ①  
① ALL  
③  
②



SOUTH ELEVATION

① ALL  
②  
④

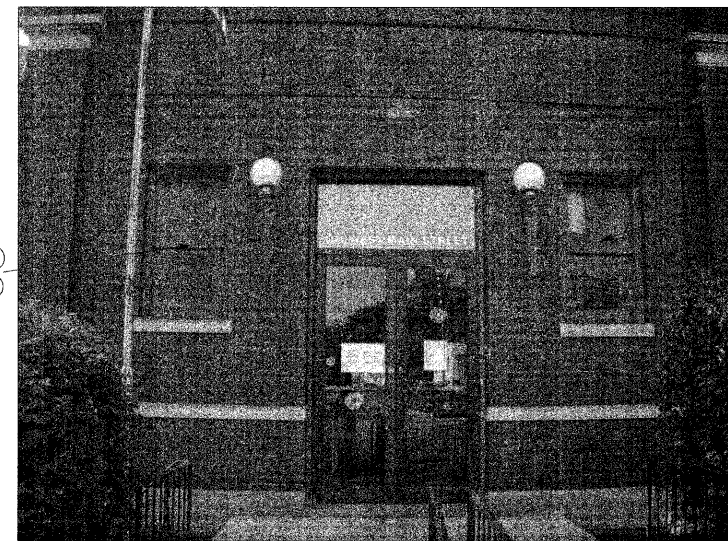
RE-FASTEN STOP



NORTH ELEVATION

④  
ALL ①  
②

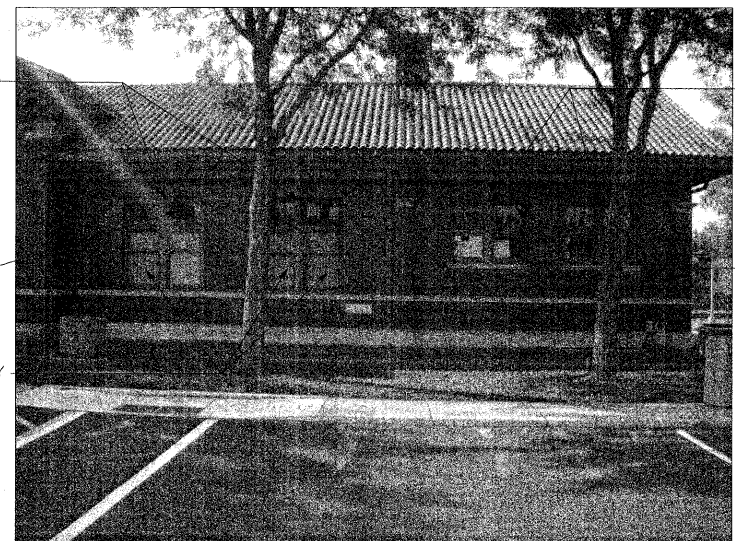
① ALL  
② ALL  
①  
②



NORTH ELEVATION

① ALL  
② ALL

REMOVE SECURITY BARS



NORTH ELEVATION

① ALL  
②

REVISIONS		
NO.	DESCRIPTION	DATE
	IDOT REVIEW	3/16/12

<b>SCALE:</b>	
<b>DRAWN BY:</b>	TK
<b>CHECKED BY:</b>	JP McG
<b>DATE:</b>	JANUARY 20, 2012

**CITY OF PLANO**  
**BUILDING, PLANNING, & ZONING**  
**17 E. MAIN STREET PLANO, IL 60545**  
**630-552-8425**

SECTION	COUNTY	TOTAL SHTS	SHEET NO.
SECTION #10-0039-00-HP	KENDALL	4	3
HISTORIC PLANO DEPOT, 101 W. MAIN ST., PLANO		CONTRACT NO. 87508	
CITY OF PLANO	ILLINOIS	ITEP PROJECT	