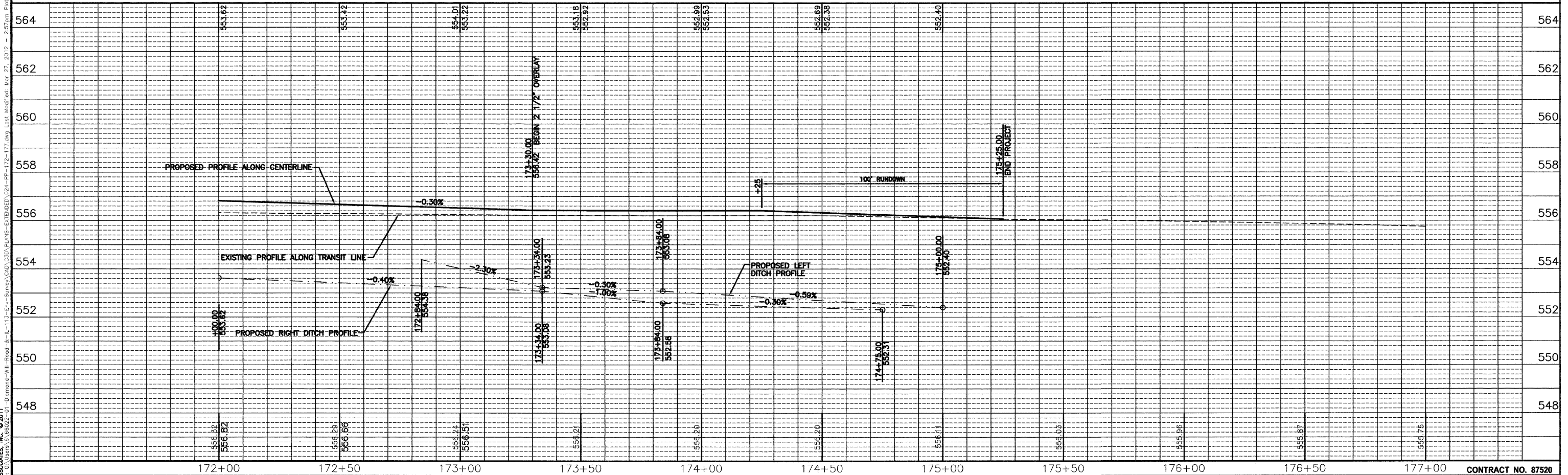


SEE SHEETS 10 & 11
FOR DRAINAGE
SCHEDULES

BENCHMARKS:
CHISELED "X" IN LIGHT POLE BASE
AT NORTHWEST CORNER OF IL 113
AND CURTIS
ELEV. = 560.20

SOUTHWEST BOLT ON FIRE HYDRANT
250'± EAST OF WILL ROAD ON NORTH
SIDE OF IL 113
ELEV. = 556.76

OUTLET FOR CONC. CURB AND GUTTER
TYPE B-6.24 SEE HIGHWAY STD 606006



DRAWN BY: NV	LEVEL	BY	DATE	REVISIONS	DESCRIPTION
CHECKED BY: JKC					
DATE: 02/12					

CHAMLIN ASSOCIATES
PERU MORRIS ILLINOIS

FAS 301 / FAU 383
SECTION 11-00007-00-WR
VILLAGE OF DIAMOND
GRUNDY AND WILL COUNTIES

PLAN AND PROFILE - IL 113
STA. 172+00 TO STA. 177+00

CONSTRUCTION PLANS

CURRENT AS OF: 02/12	SHEET 24
SCALE: AS NOTED	OF 96
FILE NO.: 66022.01Y-	

CHAMLIN & ASSOCIATES, INC. © 2011
Drawing Name: G:\Users\jkc\Documents\Will-Road-IL-113-Envs-Survey\CAD\3D\PLANS-EXTENDED\024-PP-172-177.dwg Last Modified: Mar 27, 2012 - 2:07pm Plotted on: Mar 28, 2012 - 8:29am by nancj

CONTRACT NO. 87520