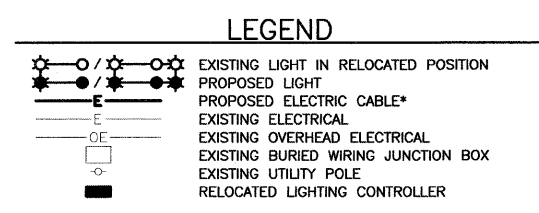
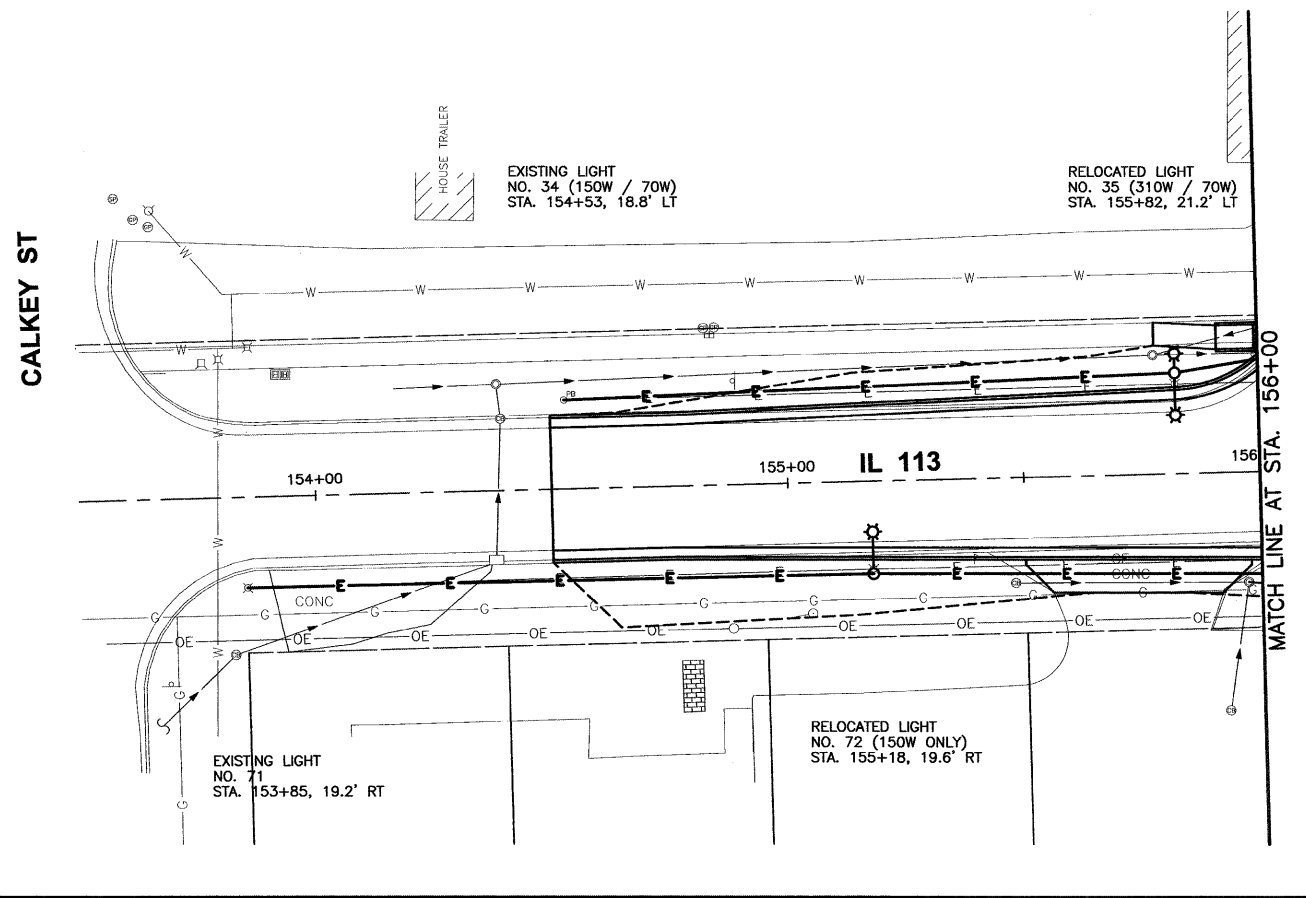
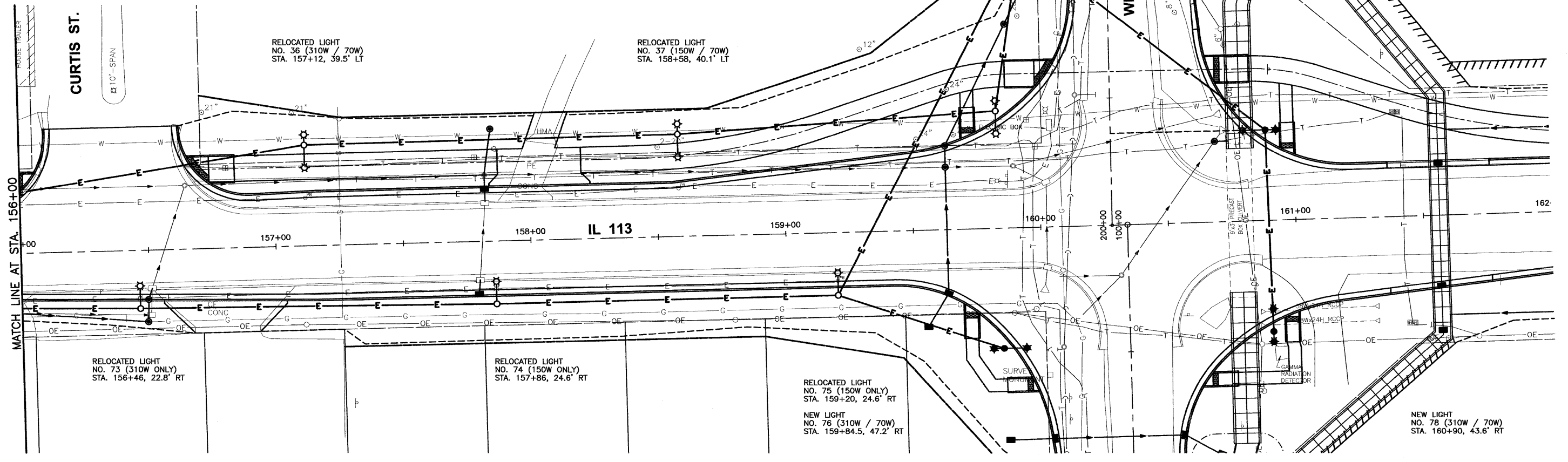
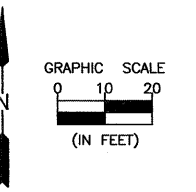


CHAMLIN & ASSOCIATES, INC. © 2011
 Drawing Name: C:\Users\GAMORRIS\OneDrive\Documents\Will-Road-IL-113-Ext-Plans-Extended\GAS-LIGHTING.dwg, Last Modified: Apr 16, 2012 - 12:55pm Plotted on: Apr 16, 2012 - 12:57pm by nuroia



WORK THIS SHEET WITH REMOVAL PLANS



DRAWN BY: NV	REVISIONS			
CHECKED BY: JKC	LEVEL	BY	DATE	DESCRIPTION
DATE: 02/12				

CHAMLIN & ASSOCIATES
 PERU MORRIS ILLINOIS

FAS 301 / FAU 383
 SECTION 11-0007-00-WR
 VILLAGE OF DIAMOND
 GRUNDY AND WILL COUNTIES

LIGHTING PLAN - IL 113
 STA. 156+00 TO STA. 162+00

CONSTRUCTION PLANS	CONTRACT NO. 87520	
	CURRENT AS OF: 02/12	SHEET 55
	SCALE: AS NOTED	OF 96