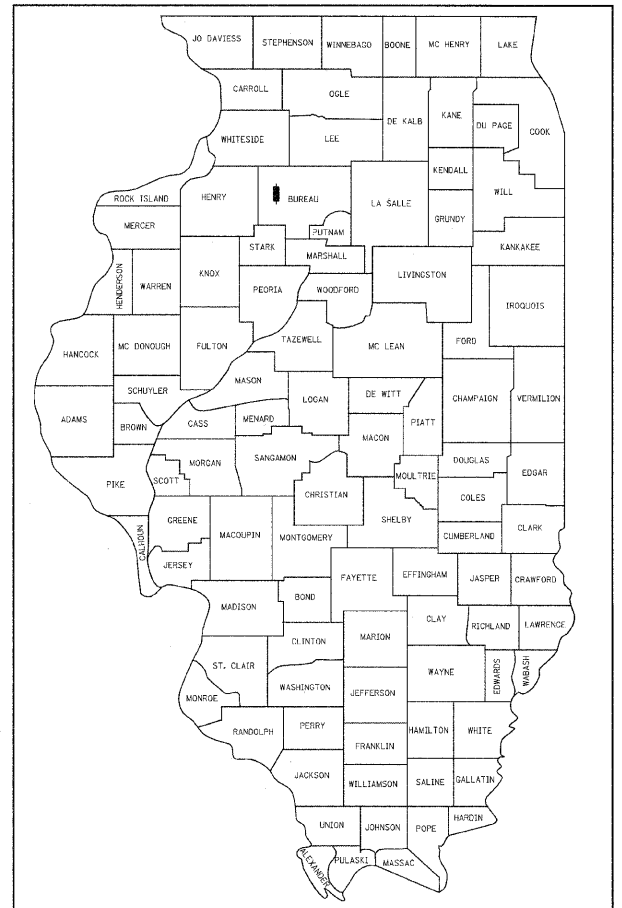


TWP. RTE.	SECTION	COUNTY	TOTAL SHEETS	SHEET NO.
106	08-15119-00-BR	BUREAU	18	1
ILLINOIS		CONTRACT NO. 87523		

STATE OF ILLINOIS  
DEPARTMENT OF TRANSPORTATION  
DIVISION OF HIGHWAYS

# PLANS FOR PROPOSED FEDERAL AID PROJECT HIGHWAY BRIDGE PROGRAM

- INDEX OF SHEETS**
- 1 = COVER SHEET
  - 2 = SUMMARY OF QUANTITIES
  - 3 = GENERAL NOTES, SCHEDULE OF QUANTITIES & DETAIL
  - 4 = TYPICAL SECTIONS
  - 5 = PLAN & PROFILE
  - 6 = EROSION CONTROL PLAN
  - 7 = GENERAL PLAN AND ELEVATION
  - 8 = RIPRAP & PILE LAYOUT
  - 9 = 27" x 36" PPC DECK BEAM
  - 10 = 27" x 36" DECK BEAM DETAILS
  - 11 = SOUTH ABUTMENT DETAILS
  - 12 = NORTH ABUTMENT DETAILS
  - 13 = STEEL RAILING, TYPE S-1 DETAILS
  - 14 = METAL SHELL PILE DETAILS
  - 15 = BORING LOGS
  - 16-18 = CROSS SECTIONS

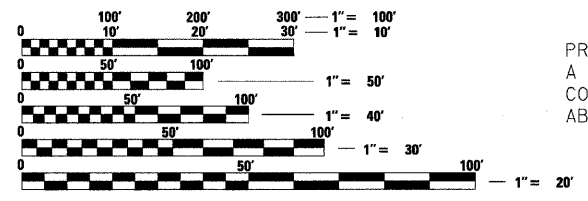


LOCATION OF SECTION INDICATED THUS: —

**TOWNSHIP ROUTE 106 (850 E. ST.)  
SECTION 08-15119-00-BR  
PROJECT BROS-0011(086)  
STRUCTURE REPLACEMENT  
BUREAU COUNTY  
MANLIUS ROAD DISTRICT  
C-93-066-12**

**STANDARDS**

- 000001-06 STANDARD SYMBOLS, ABBREVIATIONS, AND PATTERNS
- 280001-06 TEMPORARY EROSION CONTROL SYSTEMS
- 515001-03 NAME PLATE FOR BRIDGES
- 701901-02 TRAFFIC CONTROL DEVICES
- 720011-01 METAL POSTS FOR SIGNS, MARKERS & DELINEATORS
- 728001-01 TELESCOPING STEEL SIGN SUPPORT
- 729001-01 APPLICATIONS OF TYPE A & B METAL POSTS (FOR SIGNS & MARKERS)
- B.L.R. 21-9 TYPICAL APPLICATION OF TRAFFIC CONTROL DEVICES FOR CONSTRUCTION ON RURAL LOCAL HIGHWAYS
- B.L.R. 22-7 TYPICAL APPLICATION OF TRAFFIC CONTROL DEVICES FOR CONSTRUCTION ON RURAL LOCAL HIGHWAYS

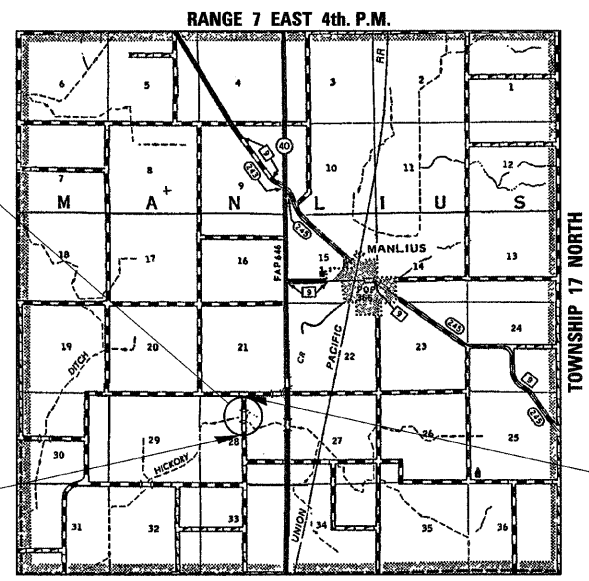


FULL SIZE PLANS HAVE BEEN PREPARED USING STANDARD ENGINEERING SCALES. REDUCED SIZED PLANS WILL NOT CONFORM TO STANDARD SCALES. IN MAKING MEASUREMENTS ON REDUCED PLANS, THE ABOVE SCALES MAY BE USED.

**J.U.L.I.E.  
JOINT UTILITY LOCATION INFORMATION FOR EXCAVATION  
1-800-892-0123  
OR 811**

**PROJECT ENGINEER – MCW  
PROJECT MANAGER – BKC  
CONTRACT NO. 87523**

PROPOSED STRUCTURE: S.N. 006-4218  
A SINGLE SPAN (1@59'-2") PRECAST PRESTRESSED CONCRETE DECK BEAM BRIDGE ON SPILL THRU ABUTMENTS @ STA. 20+00. SKEWED 0°.



**FUNCTIONAL CLASSIFICATION  
LOCAL ROAD (NON-URBAN)  
DESIGN SPEED 30 MPH  
2012 ADT = 15  
3R GUIDELINES**

GROSS LENGTH = 250 FT. = 0.047 MILE  
NET LENGTH = 250 FT. = 0.047 MILE

**UTILITIES:**  
VERIZON (FRONTIER COM.)  
Attn: Garrett Burt  
112 Elm Street  
Sycamore, IL 60178  
815-895-1538

CORN BELT ENERGY CORP.  
Attn: Barry Burkman  
1702 West Peru  
Princeton, IL 61356  
309-662-5330 Ext. 301



BUREAU COUNTY HIGHWAY DEPARTMENT	
APPROVED	03/30/12 <i>Julian C. Giam</i> BUREAU COUNTY ENGINEER
APPROVED	03/30/12 <i>Eric R. Ransom</i> MANLIUS ROAD COMMISSIONER
PASSED	April 9, 2012 <i>John J. ...</i> DISTRICT PROJECT IMPLEMENTATION ENGINEER
RELEASING FOR BID BASED ON LIMITED REVIEW	April 9, 2012 <i>...</i> DEPUTY DIRECTOR OF HIGHWAYS, REGION 2 ENGINEER



*Brian K. Converse*  
DATE: 3/23/2012  
EXPIRES 11/30/2013

**WILLETT HOFMANN  
& ASSOCIATES INC.**  
ENGINEERING ARCHITECTURE LAND SURVEYING  
809 EAST 2ND STREET, DIXON, IL 61021-0367  
T: 815-284-3381 DESIGN FIRM: #184-000918

FILE = S:\PROJECTS\2012\1267012\_BureauCo\_TPB\DESIGN\STRUCT\Cover.dgn