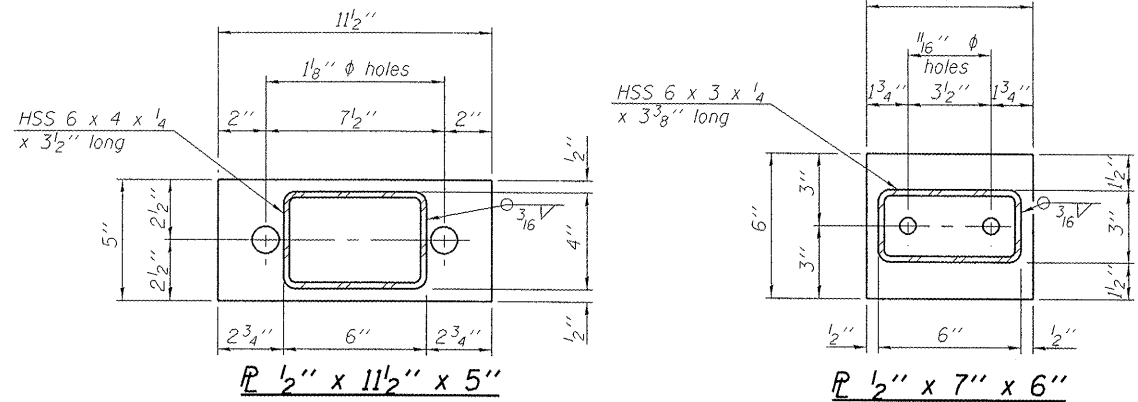
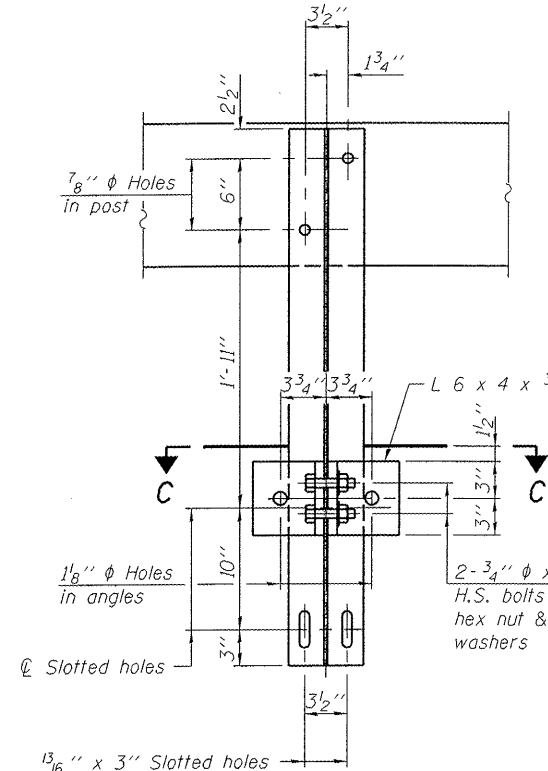


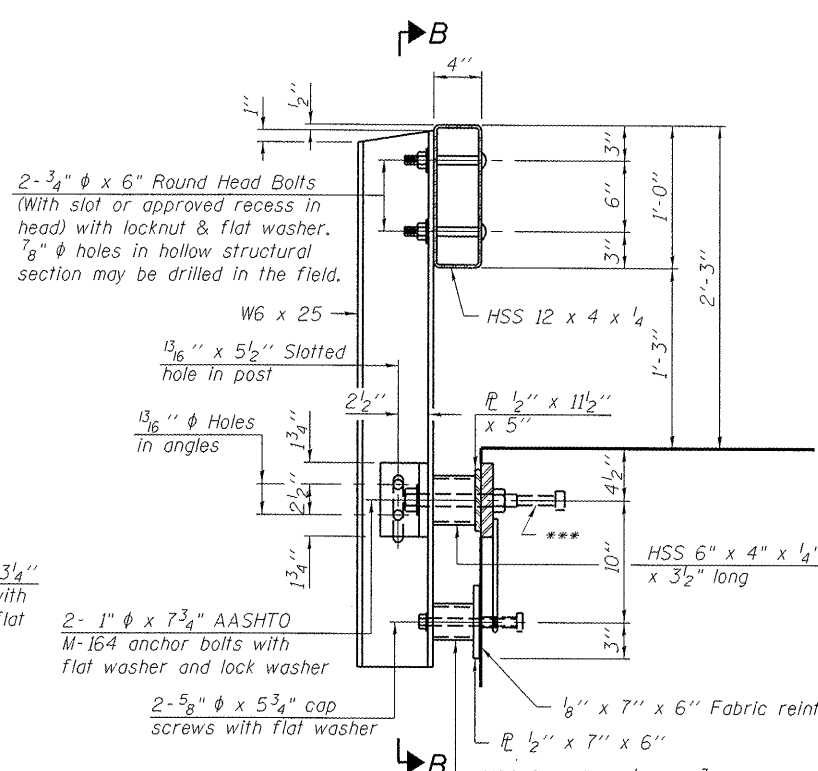
**VIEW A-A
ROUND HEAD BOLT**



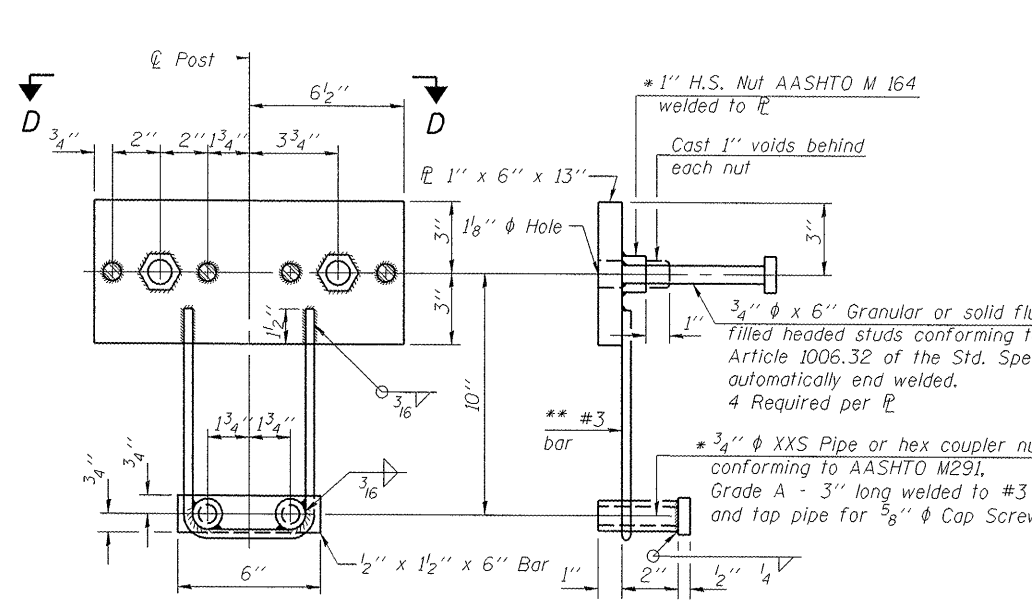
SEE SUPERSTRUCTURE AND APPROACH SLAB SHEETS FOR RAIL POST SPACING



SECTION B-B

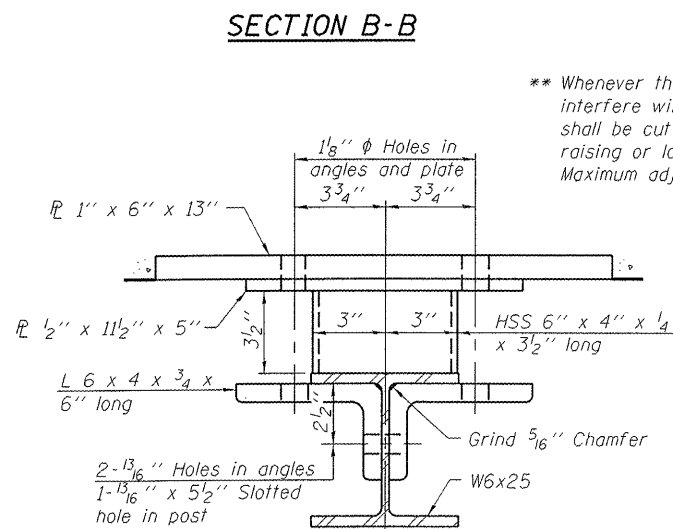


SECTION AT RAILING POST

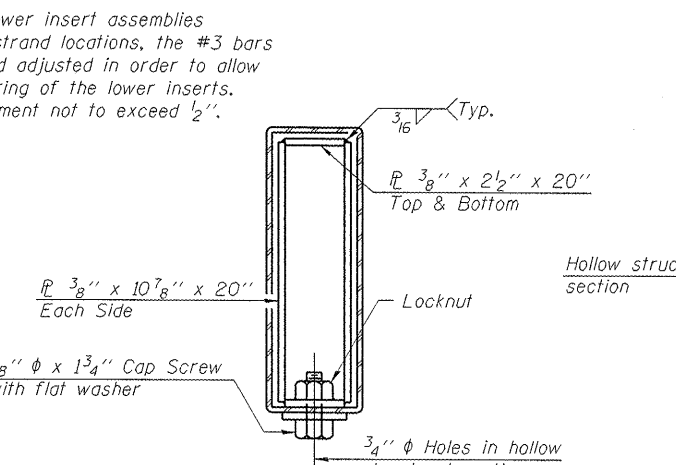


ANCHOR DEVICE

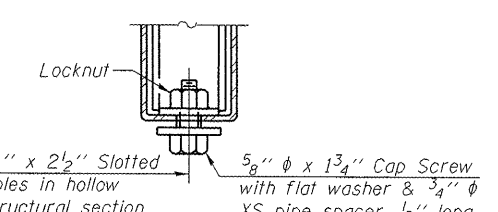
Notes:
 All field drilled holes shall be coated with an approved zinc rich paint before erection. For multi-span bridges, sufficient 1/4 inch x 6 inch x 1-2 inch galvanized steel shims shall be provided to align rail between adjacent spans. Cost included with Steel Railing, Type S-1. All steel rail elements shall be galvanized according to Article 509.05 of the Standard Specifications.
 *** The studs of the anchor devices shall be placed below the top reinforcement bars and the outermost longitudinal reinforcement bar shall be placed directly above the studs of the rail post anchor device.



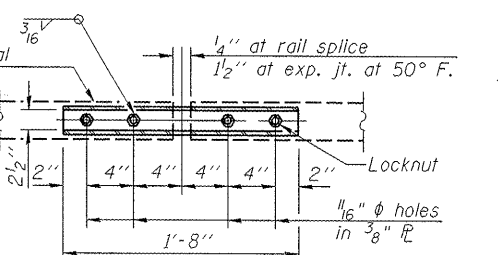
SECTION C-C



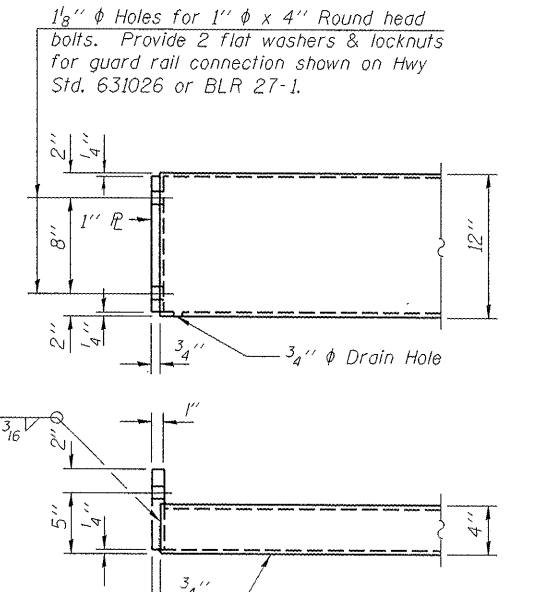
SECTIONS AT RAIL SPLICE



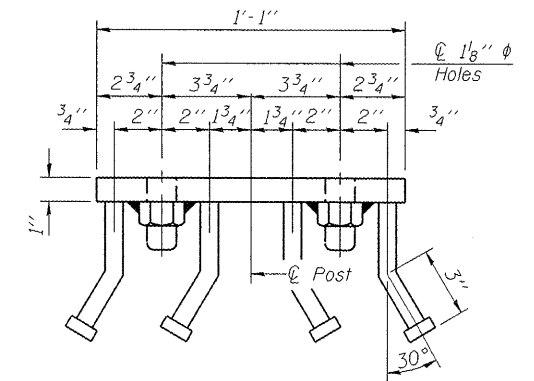
RAIL SPLICE CONNECTION AT EXPANSION JT.



PLAN-BOTT. SPLICE R TYPICAL



END OF RAIL DETAILS



VIEW D-D

BILL OF MATERIAL

Item	Unit	Quantity
Steel Railing, Type S-1	Foot	265

(10'-9" Maximum Post Spacing)

FILE NAME =	USER NAME =	DESIGNED - JGT	REVISED -	STATE OF ILLINOIS DEPARTMENT OF TRANSPORTATION	STEEL RAILING, TYPE S-1 STRUCTURE NO. 048-3387	F.A. RTE.	SECTION	COUNTY	TOTAL SHEETS	SHEET NO.
	PLDT SCALE =	CHECKED - MNM	REVISED -			TR 176	05-15106-01-BR	KNOX	97	53
	PLDT DATE =	DRAWN - DAP	REVISED -			CONTRACT NO. 89429				
		CHECKED - JGT	REVISED -			ILLINOIS FED. AID PROJECT BROS 0095 127				