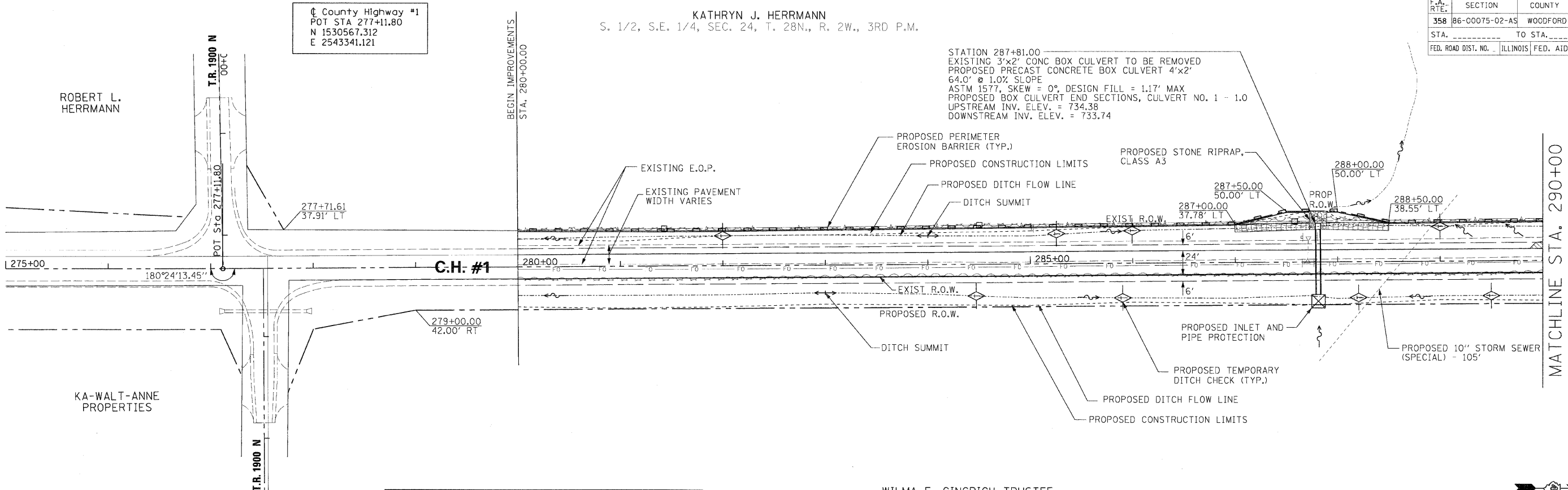


F.A. RTE.	SECTION	COUNTY	TOTAL SHEETS	SHEET NO.
358	86-00075-02-AS	WOODFORD	53	15
STA. _____ TO STA. _____		FED. ROAD DIST. NO. _____ ILLINOIS FED. AID PROJECT		

KATHRYN J. HERRMANN  
S. 1/2, S.E. 1/4, SEC. 24, T. 28N., R. 2W., 3RD P.M.

County Highway #1  
POT STA 277+11.80  
N 1530567.312  
E 2543341.121



WILMA E. GINGRICH TRUSTEE  
S.W. 1/4, SEC. 19, T. 28N., R. 1W., 3RD P.M.

PROPOSED PROFILE IS FOR TOP OF FINISHED HOT-MIX ASPHALT SURFACE

H. SCALE: 1" = 50'  
V. SCALE: 1" = 5'

DATE	
BY	
PLANNED	
CHECKED	
REVISIONS	
NO.	
DATE	
BY	
NO.	
DATE	
BY	
NO.	

DATE	
BY	
PLANNED	
CHECKED	
REVISIONS	
NO.	
DATE	
BY	
NO.	
DATE	
BY	
NO.	

PLOT DATE = #DAYS#  
FILE NAME = #FILE#  
PLOT SCALE = #SCALE#  
USER NAME = #USER#

