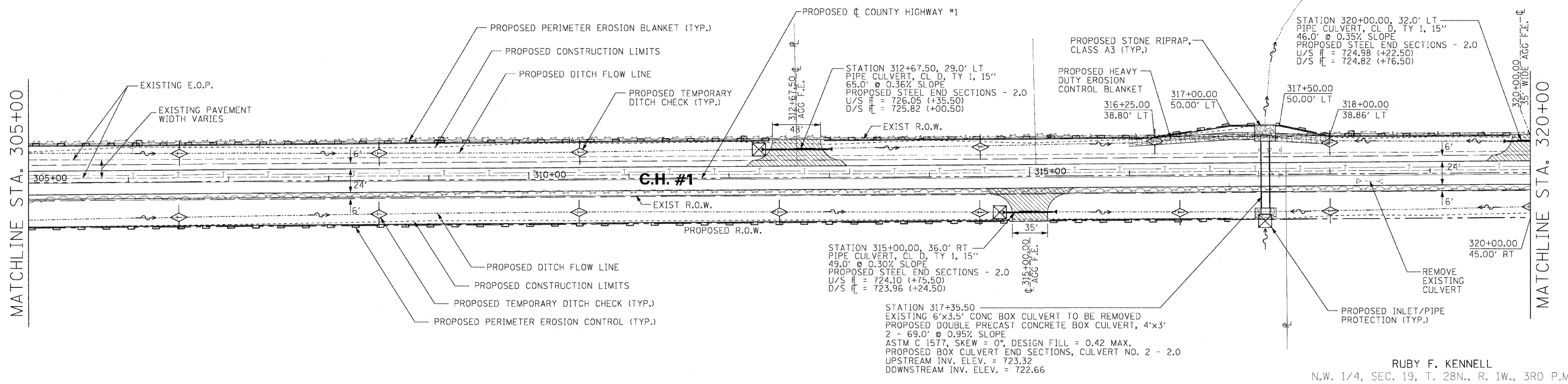


| F.A. RTE.                 | SECTION        | COUNTY                    | TOTAL SHEETS | SHEET NO. |
|---------------------------|----------------|---------------------------|--------------|-----------|
| 358                       | 86-00075-02-AS | WOODFORD                  | 53           | 17        |
| STA. _____                |                | TO STA. _____             |              |           |
| FED. ROAD DIST. NO. _____ |                | ILLINOIS FED. AID PROJECT |              |           |

EILEEN SCHERTZ  
N.E. 1/4, SEC. 24, T. 28N., R. 2W., 3RD P.M.

FREDDIE L. SCHERTZ  
N.E. 1/4, SEC. 24, T. 28N., R. 2W., 3RD P.M.

HAROLD M. ZOISS  
N.E. 1/4, SEC. 24, T. 28N., R. 2W., 3RD P.M.



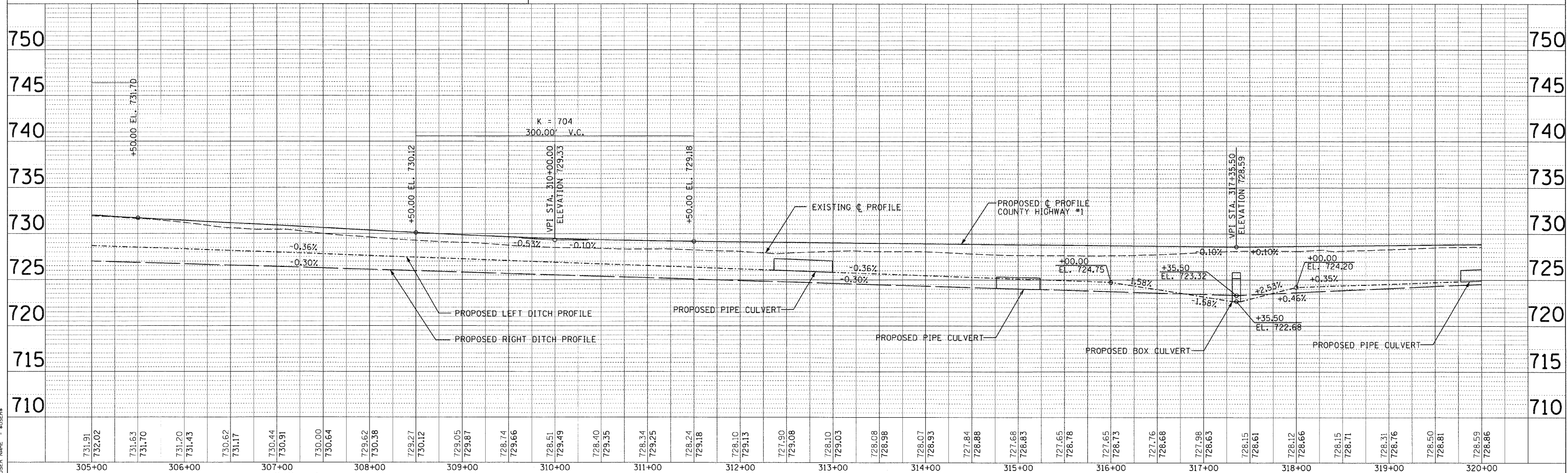
RUBY F. KENNELL  
N.W. 1/4, SEC. 19, T. 28N., R. 1W., 3RD P.M.

WESLEY L. GINGRICH  
S.W. 1/4, N.W. 1/4, SEC. 19, T. 28N., R. 1W., 3RD P.M.

PROPOSED PROFILE ELEVATIONS ARE FOR TOP OF FINISHED HOT-MIX ASPHALT SURFACE



H. SCALE: 1" = 50'  
V. SCALE: 1" = 5'



|                    |  |
|--------------------|--|
| DATE               |  |
| BY                 |  |
| PLAN               |  |
| REVISED            |  |
| PLotted            |  |
| Checked            |  |
| RT. OF WAY CHECKED |  |
| NOTE BOOK          |  |
| NO.                |  |
| FILE NAME          |  |
| NO.                |  |

|                    |  |
|--------------------|--|
| DATE               |  |
| BY                 |  |
| PROFILE            |  |
| REVISED            |  |
| PLotted            |  |
| Checked            |  |
| RT. OF WAY CHECKED |  |
| NOTE BOOK          |  |
| NO.                |  |
| FILE NAME          |  |
| NO.                |  |

|           |  |
|-----------|--|
| DATE      |  |
| BY        |  |
| FILE NAME |  |
| SCALE     |  |
| USER NAME |  |