

LLOYD M. DAMERELL
N. 1/2, S.E. 1/4, SEC. 13, T. 28N.,
R. 2W., 3RD P.M.

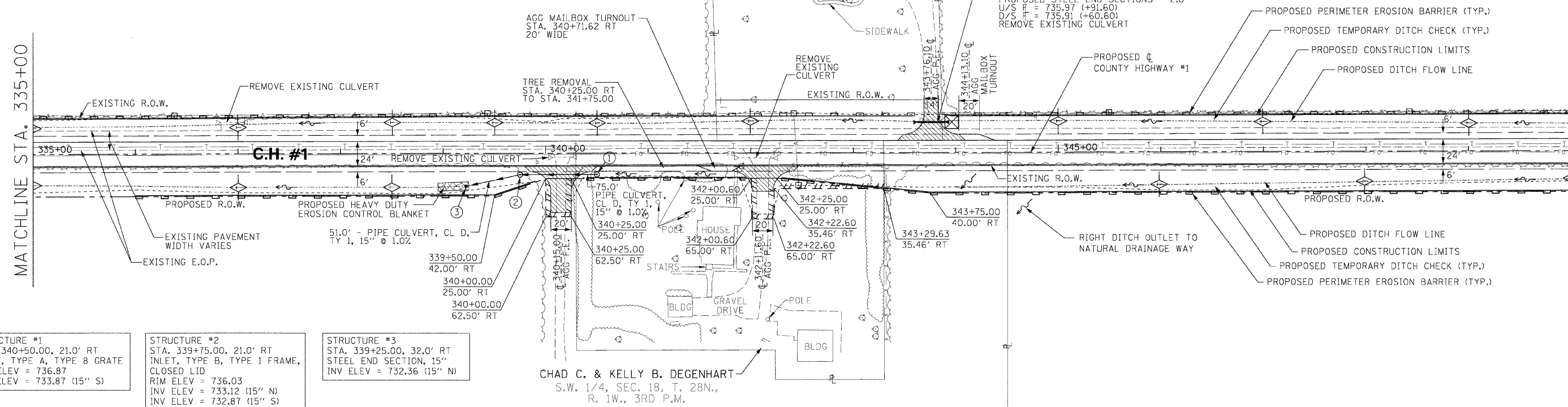
F.A. RT.E.	SECTION	COUNTY	TOTAL SHEETS	SHEET NO.
358	86-00075-02-AS	WOODFORD	53	19
STA. _____ TO STA. _____		FED. ROAD DIST. NO. _____ ILLINOIS FED. AID PROJECT		

ARTHUR L. ZOSS
S. 1/2, S.E. 1/4, SEC. 13, T. 28N.,
R. 2W., 3RD P.M.

MATCHLINE STA. 335+00

MATCHLINE STA. 350+00

PLAN	SURVEYED	BY	DATE
	PLOTTED		
	NOTED		
	NO. _____		



STRUCTURE #1
STA. 340+50.00, 21.0' RT
INLET, TYPE A, TYPE 8 GRATE
RIM ELEV = 736.87
INV ELEV = 733.87 (15" S)

STRUCTURE #2
STA. 339+75.00, 21.0' RT
INLET, TYPE B, TYPE 1 FRAME,
CLOSED LID
RIM ELEV = 736.03
INV ELEV = 733.12 (15" N)
INV ELEV = 732.87 (15" S)

STRUCTURE #3
STA. 339+25.00, 32.0' RT
STEEL END SECTION, 15"
INV ELEV = 732.36 (15" N)

CHAD C. & KELLY B. DEGENHART
S.W. 1/4, SEC. 18, T. 28N.,
R. 1W., 3RD P.M.

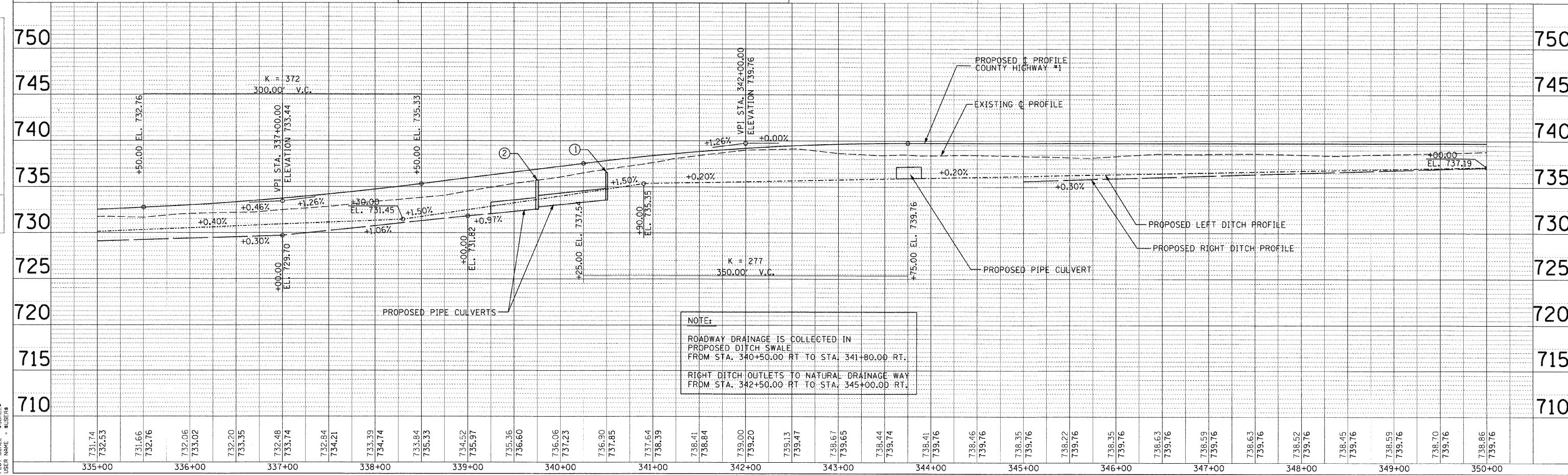
ROXANNE K. BELSHAW
S.W. 1/4, SEC. 18,
T. 28N., R. 1W.,
3RD P.M.

ELISABETH P. FUNK, TRUST
S.W. 1/4, SEC. 18, T. 28N., R. 1W., 3RD P.M.

H. SCALE: 1" = 50'
V. SCALE: 1" = 5'

PROPOSED PROFILE ELEVATIONS ARE
FOR TOP OF FINISHED HOT-MIX ASPHALT SURFACE

PROFILE	SURVEYED	BY	DATE
	PLOTTED		
	NOTED		
	NO. _____		



NOTE:
ROADWAY DRAINAGE IS COLLECTED IN
PROPOSED DITCH SWALE
FROM STA. 340+50.00 RT TO STA. 341+80.00 RT.
RIGHT DITCH OUTLETS TO NATURAL DRAINAGE WAY
FROM STA. 342+50.00 RT TO STA. 345+00.00 RT.

PLOT DATE = 8/24/88
FILE NAME = 071118
PLOT SCALE = 1" = 50'
USER NAME = JLS