

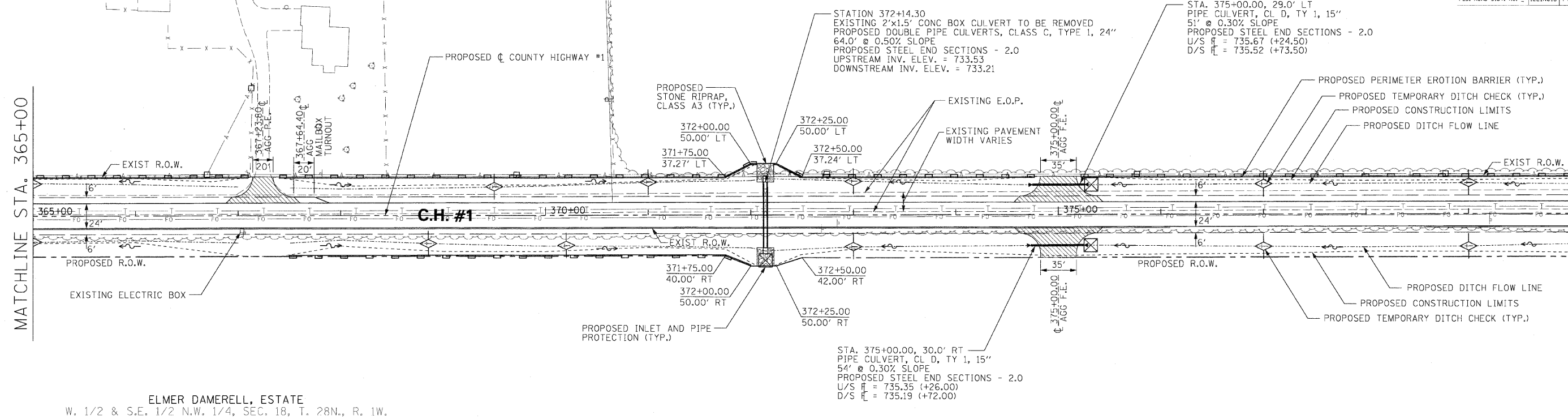
F.A. RTE.	SECTION	COUNTY	TOTAL SHEETS	SHEET NO.
358	86-00075-02-AS	WOODFORD	53	21
STA.	TO STA.			
FED. ROAD DIST. NO.	ILLINOIS	FED. AID PROJECT		

LLOYD M. DAMERELL
S.E. 1/4, N.E. 1/4, SEC. 13, T. 28N., R. 2W., 3RD P.M.

MARY E. ZOSS
E. 1/2, W. 1/2 OF N.E. 1/4, SEC. 13, T. 28N., R. 2W.

MATCHLINE STA. 365+00

MATCHLINE STA. 380+00



ELMER DAMERELL, ESTATE
W. 1/2 & S.E. 1/2 N.W. 1/4, SEC. 18, T. 28N., R. 1W.

ELMER DAMERELL, ESTATE
W. 1/2 & S.E. 1/2 N.W. 1/4, SEC. 18, T. 28N., R. 1W.

PROPOSED PROFILE ELEVATIONS ARE FOR TOP OF FINISHED HOT-MIX ASPHALT SURFACE

H. SCALE: 1" = 50'
V. SCALE: 1" = 5'

PLAN	DATE
BY	
REVISIONS	
NO.	
DESCRIPTION	

PROFILE	DATE
BY	
REVISIONS	
NO.	
DESCRIPTION	

