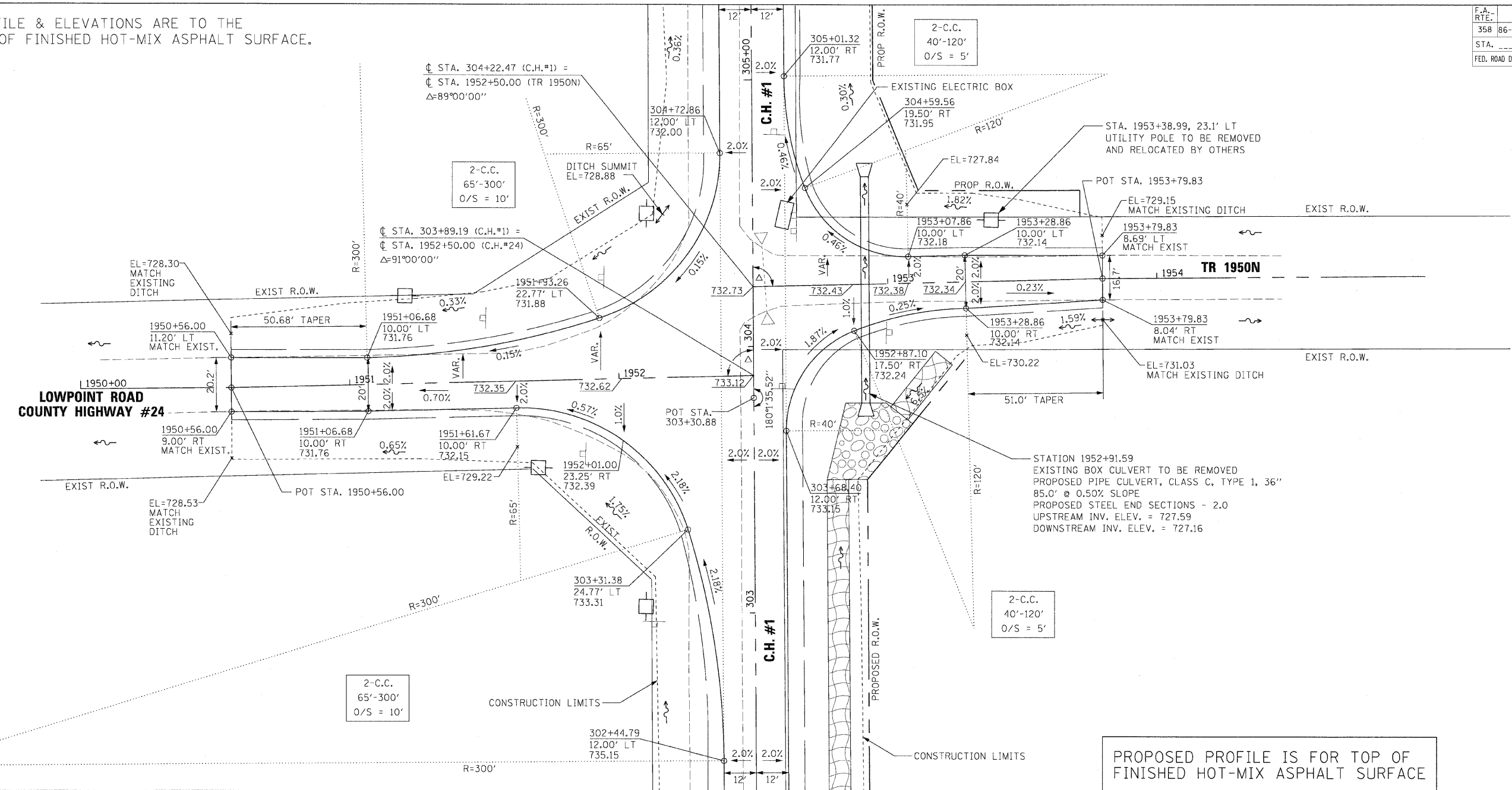


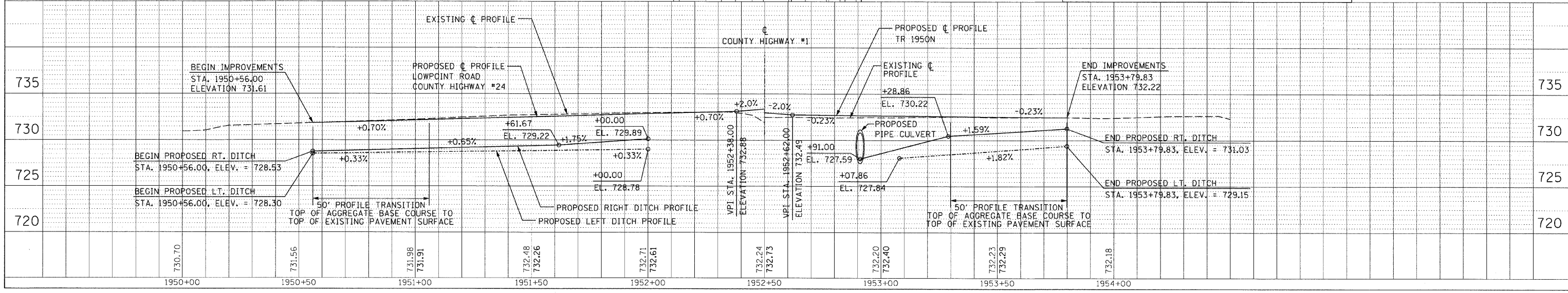
F.A. RTE.	SECTION	COUNTY	TOTAL SHEETS	SHEET NO.
358	86-00075-00-AS	WOODFORD	53	23
STA. _____		TO STA. _____		
FED. ROAD DIST. NO. _____		ILLINOIS		FED. AID PROJECT

NOTE: PROFILE & ELEVATIONS ARE TO THE TOP OF FINISHED HOT-MIX ASPHALT SURFACE.



PROPOSED PROFILE IS FOR TOP OF FINISHED HOT-MIX ASPHALT SURFACE

H. SCALE: 1" = 20'
V. SCALE: 1" = 5'



PLAN

DATE	
BY	
NO. _____	

PROFILE

DATE	
BY	
NO. _____	

PLOT DATE = #DAYS#
FILE NAME = #FILE#
PLOT SCALE = #SCALE#
USER NAME = #USER#