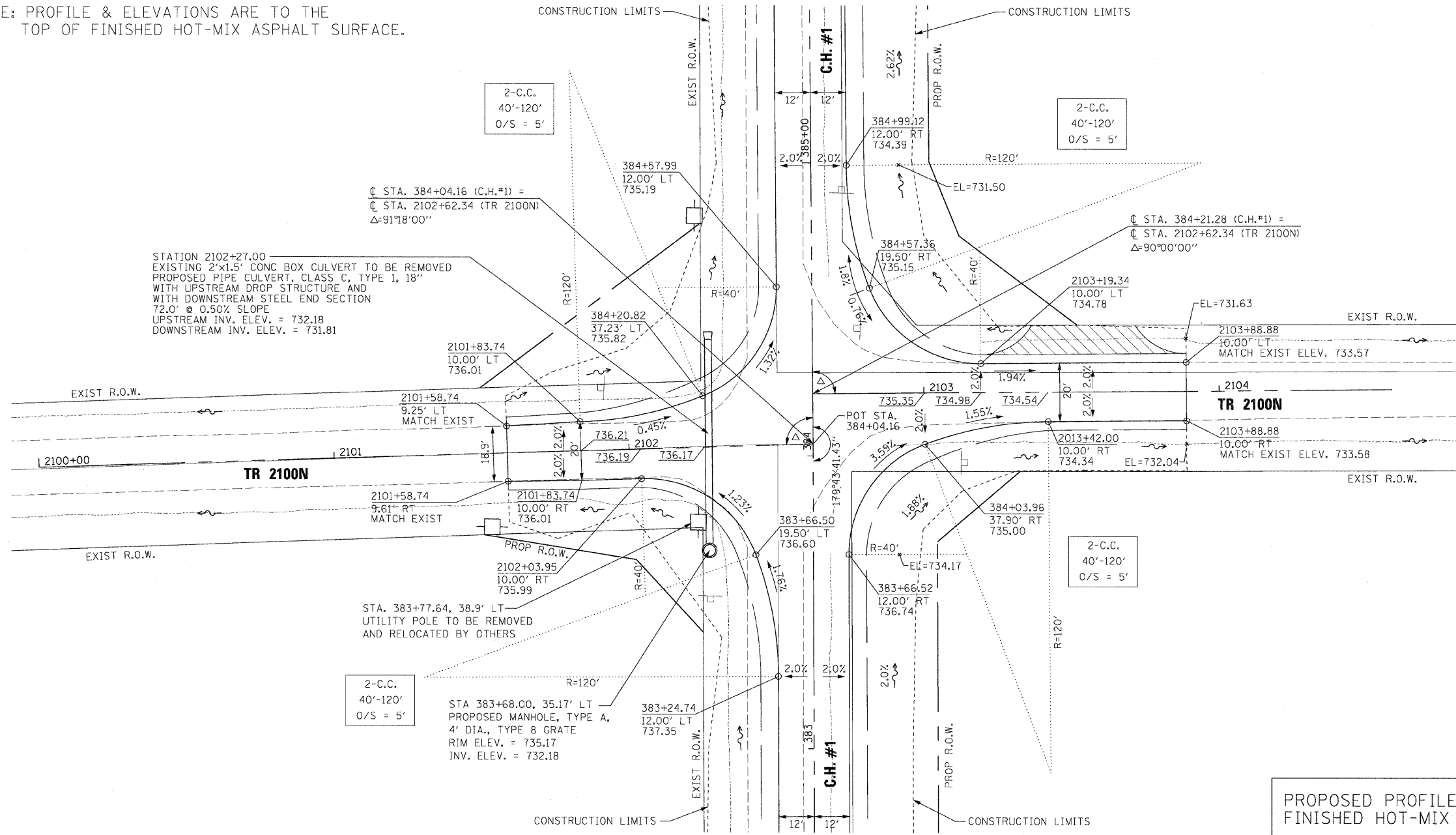


F.A. RTE.	SECTION	COUNTY	TOTAL SHEETS	SHEET NO.
358	86-00075-00-AS	WOODFORD	53	25
STA. _____ TO STA. _____		FED. ROAD DIST. NO. ILLINOIS FED. AID PROJECT		

NOTE: PROFILE & ELEVATIONS ARE TO THE TOP OF FINISHED HOT-MIX ASPHALT SURFACE.



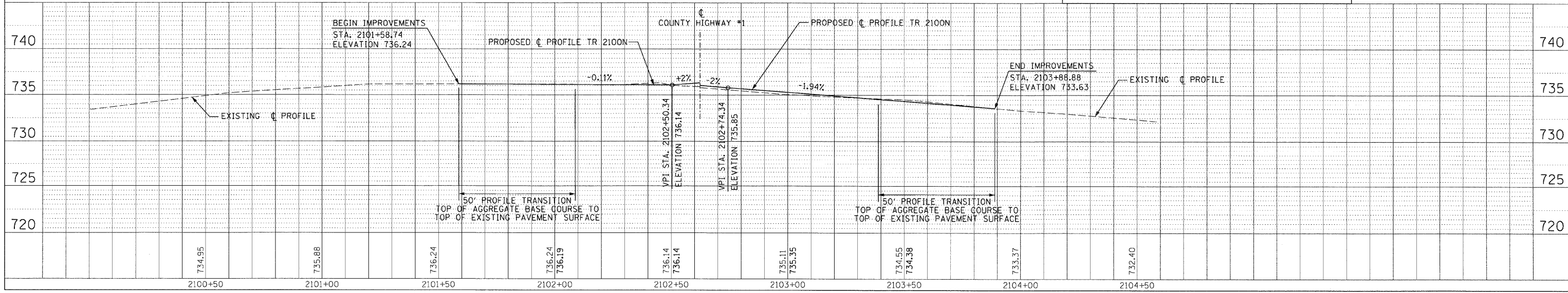
STATION 2102+27.00
 EXISTING 2'x1.5' CONC BOX CULVERT TO BE REMOVED
 PROPOSED PIPE CULVERT, CLASS C, TYPE 1, 18\"/>

STA. 383+77.64, 38.9' LT
 UTILITY POLE TO BE REMOVED
 AND RELOCATED BY OTHERS

STA 383+68.00, 35.17' LT
 PROPOSED MANHOLE, TYPE A,
 4' DIA., TYPE 8 GRATE
 RIM ELEV. = 735.17
 INV. ELEV. = 732.18

PROPOSED PROFILE IS FOR TOP OF FINISHED HOT-MIX ASPHALT SURFACE

H. SCALE: 1" = 20'
 V. SCALE: 1" = 5'



PROFILE

DATE	
BY	
REVISIONS	
NO.	
DESCRIPTION	

PLOT DATE = #DATES
 FILE NAME = #FILES
 PLOT SCALE = #SCALE#
 USER NAME = #USERS