

INDEX OF SHEETS

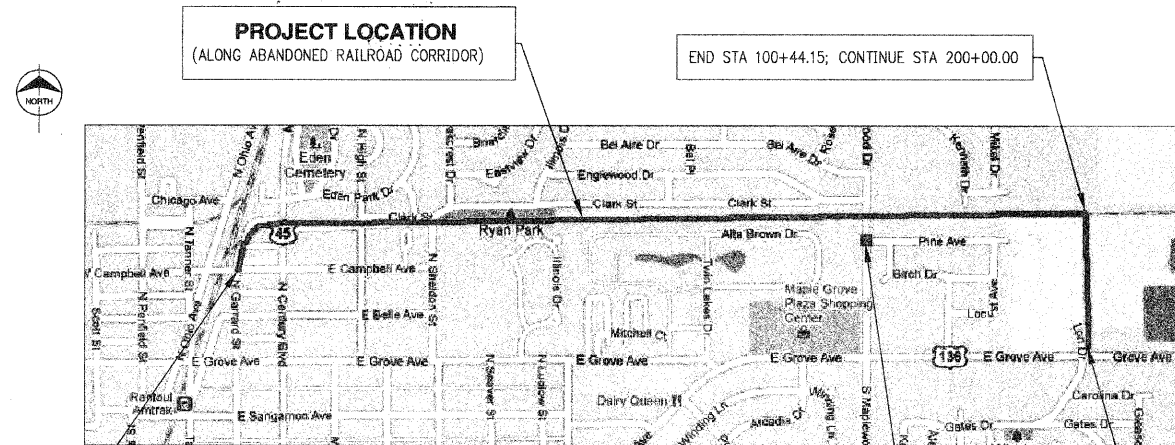
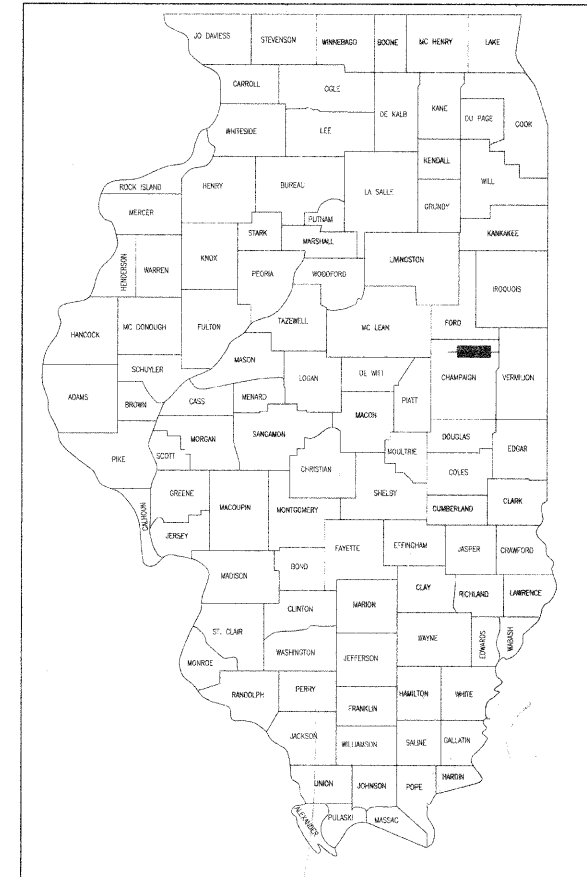
SHEET NUMBER	SHEET TITLE
1	COVER
2	SUMMARY OF QUANTITIES
3	TYPICAL CROSS SECTION 1 OF 2
4	TYPICAL CROSS SECTION 2 OF 2
5	GENERAL NOTES 1 OF 2
6	GENERAL NOTES 2 OF 2
7	ALIGNMENTS AND BENCHMARKS 1 OF 3
8	ALIGNMENTS AND BENCHMARKS 2 OF 3
9	ALIGNMENTS AND BENCHMARKS 3 OF 3
10	PLAN AND PROFILE: STA 20+00 TO 24+00
11	PLAN AND PROFILE: STA 24+00 TO 29+00
12	PLAN AND PROFILE: STA 29+00 TO 34+00
13	PLAN AND PROFILE: STA 34+00 TO 39+00
14	PLAN AND PROFILE: STA 39+00 TO 44+00
15	PLAN AND PROFILE: STA 44+00 TO 49+00
16	PLAN AND PROFILE: STA 49+00 TO 54+00
17	PLAN AND PROFILE: STA 54+00 TO 59+00
18	PLAN AND PROFILE: STA 59+00 TO 64+00
19	PLAN AND PROFILE: STA 64+00 TO 69+00
20	PLAN AND PROFILE: STA 69+00 TO 74+00
21	PLAN AND PROFILE: STA 74+00 TO 79+00
22	PLAN AND PROFILE: STA 79+00 TO 84+00
23	PLAN AND PROFILE: STA 84+00 TO 89+00
24	PLAN AND PROFILE: STA 89+00 TO 94+00
25	PLAN AND PROFILE: STA 94+00 TO 99+00
26	PLAN AND PROFILE: STA 99+00 TO 101+00
27	PLAN AND PROFILE: STA 200+00 TO 205+00
28	PLAN AND PROFILE: STA 205+00 TO 209+00
29	PLAN AND PROFILE: STA 209+00 TO 213+00
30	MAPLEWOOD DRIVE PLAN & PROFILE: STA 304+00 TO 309+00
31	TRAFFIC CONTROL PLAN: MAPLEWOOD DRIVE
32	EROSION AND SEDIMENT CONTROL PLAN: STA 20+00 TO 29+00
33	EROSION AND SEDIMENT CONTROL PLAN: STA 29+00 TO 39+00
34	EROSION AND SEDIMENT CONTROL PLAN: STA 39+00 TO 49+00
35	EROSION AND SEDIMENT CONTROL PLAN: STA 49+00 TO 59+00
36	EROSION AND SEDIMENT CONTROL PLAN: STA 59+00 TO 69+00
37	EROSION AND SEDIMENT CONTROL PLAN: STA 69+00 TO 79+00
38	EROSION AND SEDIMENT CONTROL PLAN: STA 79+00 TO 89+00
39	EROSION AND SEDIMENT CONTROL PLAN: STA 89+00 TO 99+00
40	EROSION AND SEDIMENT CONTROL PLAN: STA 99+00 TO 101+00
41	EROSION AND SEDIMENT CONTROL PLAN: STA 205+00 TO 213+00
42	EROSION AND SEDIMENT CONTROL PLAN: STA 209+00 TO 213+00 & 304+00 TO 309+00
43	DETAIL 1 OF 3
44	DETAIL 2 OF 3
45	DETAIL 3 OF 3
46	CROSS SECTIONS: STA 22+07.55 TO 30+00.00
47	CROSS SECTIONS: STA 31+00.00 TO 38+00.00
48	CROSS SECTIONS: STA 38+87 TO 46+00.00
49	CROSS SECTIONS: STA 47+00.00 TO 53+00.00
50	CROSS SECTIONS: STA 54+00.00 TO 63+00.00
51	CROSS SECTIONS: STA 64+00.00 TO 73+00.00
52	CROSS SECTIONS: STA 74+00.00 TO 80+91.09
53	CROSS SECTIONS: STA 81+43.30 TO 88+50.00
54	CROSS SECTIONS: STA 89+00.00 TO 97+00.00
55	CROSS SECTIONS: STA 98+00.00 TO 100+50.00
56	CROSS SECTIONS: STA 200+00.00 TO 208+00.00
57	CROSS SECTIONS: STA 209+00.00 TO 212+82.55

STATE OF ILLINOIS
DEPARTMENT OF TRANSPORTATION
DIVISION OF HIGHWAYS
**PLANS FOR PROPOSED
FEDERAL AID HIGHWAY**

RANTOUL SHARED USE PATH
SECTION NO.: 10-00105-00-BT
PROJECT NO.: TE-00D5(101)
JOB NO.: C-95-335-12

VILLAGE OF RANTOUL
CHAMPAIGN COUNTY

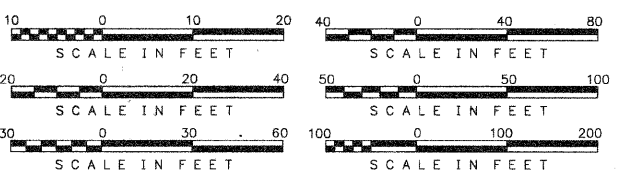
F.A.P. RTE.	SECTION	COUNTY	TOTAL SHEETS	SHEET NO.
#	10-00105-00-BT	CHAMPAIGN	57	1
FEDERAL RD. DIST. NO.		ILLINOIS	FEDERAL AID PROJECT	
CONTRACT: 91478				



LOCATION MAP
LENGTH OF PROJECT
GROSS LENGTH = 9330 FT = 1.77 MILES
NET LENGTH = 9153 FT = 1.73 MILES

CONTACTS

VILLAGE OF RANTOUL CONTACT: GREG HAZEL OFFICE: 217-892-6512
BURNS & MCDONNELL CONTACT: ANTHONY BRYANT OFFICE: 630-724-3200 FAX: 630-724-3201
IDOT CONTACT: DARLA LATHAM OFFICE: 217-466-7358 FAX: 217-466-1509



FULL SIZE PLANS HAVE BEEN PREPARED USING STANDARD ENGINEERING SCALES. REDUCED SIZED PLANS WILL NOT CONFORM TO STANDARD SCALES. IN MAKING MEASUREMENT ON REDUCED PLANS, THE ABOVE SCALES MAY BE USED.



CALL
J.U.L.I.E.
BEFORE YOU DIG
1-800-892-0123

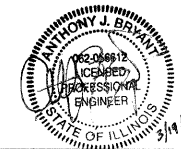
CONTRACT NO.: 91478

STATE OF ILLINOIS
DEPARTMENT OF TRANSPORTATION
DIVISION OF HIGHWAYS

Approved: *Anthony J. Bryant*
Darla Latham
President, Board of Trustees

Passed: 3/28/12
D. L. Ash
District 5 Engineer of Local Roads & Streets

Releasing for Bid Based on Limited Review: March 20, 2012
John
Deputy of Highways, Region 3 Engineer



ANTHONY J. BRYANT, P.E.
NO. 062-056612
EXP. DATE: 11/30/2013

**PRINTED BY THE AUTHORITY
OF THE STATE OF ILLINOIS**



IL DESIGN FIRM NO.
184-001310