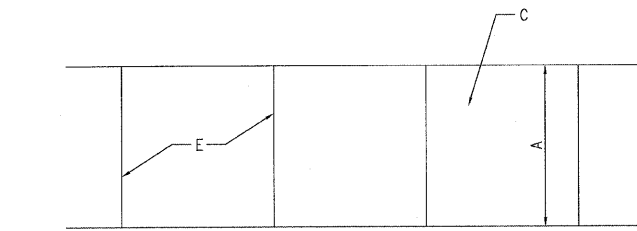
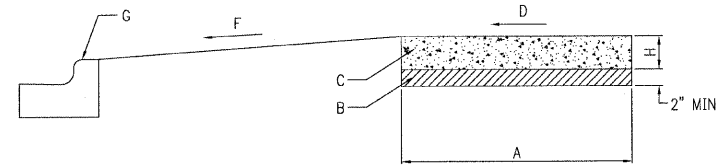


DATE	
BY	
DESIGNED	
DRAWN	
CHECKED	
IN CHARGE	
PLANNING	
NO.	
NOTE BOOK	
NO.	
PLANNING	
NO.	

DATE	
BY	
DESIGNED	
DRAWN	
CHECKED	
IN CHARGE	
PLANNING	
NO.	
NOTE BOOK	
NO.	
PLANNING	
NO.	



PLAN



PROFILE  
SIDEWALK DETAIL  
N.T.S.

**CONSTRUCTION NOTES**

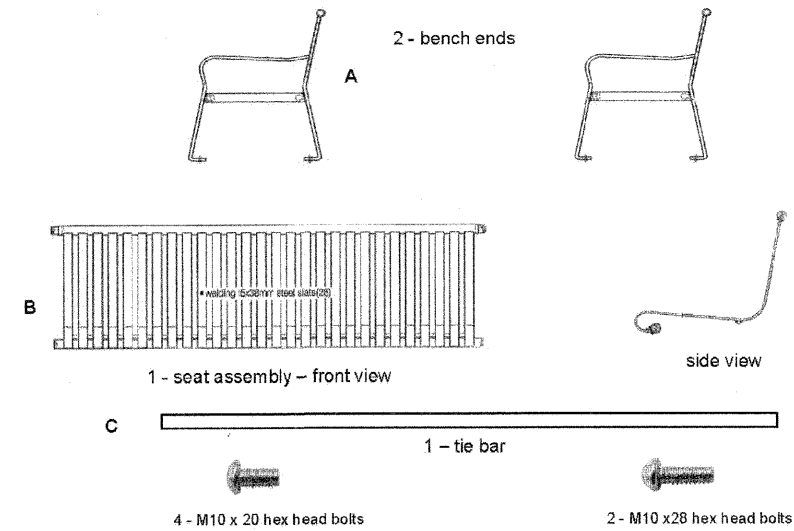
- A. 5' NORMAL WIDTH OR AS INDICATED ON PLANS
- B. AGGREGATE BASE COURSE, TYPE B, 2"
- C. P.C.C. SIDEWALK
- D. SLOPE MAXIMUM 2% TO STREET SIDE
- E. JOINTS, SEE NOTES 3 AND 4
- F. SLOPE 2% TO 8% TOWARDS STREET
- G. CURB AND CUTTER
- H. CONCRETE THICKNESS, SEE NOTE 1

**GENERAL NOTES**

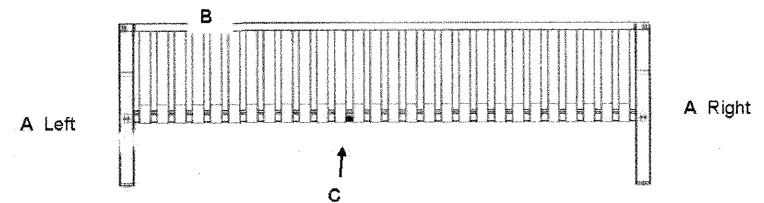
- 1. STANDARD THICKNESS OF CONCRETE SHALL BE A MINIMUM OF 5".
- 2. WHERE WOODEN FORMS ARE USED, 2x4'S ARE NOT ALLOWED. ONLY 2x6'S SHALL BE USED.
- 3. PREFORMED 3/4" EXPANSION JOINTS SHALL BE CONSTRUCTED AT MAX. SPACING OF 40'.
- 4. FORMED OR SAW-CUT CONTRACTION JOINTS SHALL BE SPACED GENERALLY 5' APART, BUT NO LESS THAN 4' AND NO MORE THAN 6'.
- 5. 1/2" EXPANSION JOINTS SHALL BE INSTALLED WHERE SIDEWALK ABUTS BUILDINGS, TRAFFIC SIGNAL FOUNDATIONS, SERVICE POLES, AND OTHER IMMOVABLE STRUCTURES.
- 6. CONCRETE TO BE CLASS S.I. PER SECTION 1020 STANDARD SPECIFICATION.

**BENCH INSTALLATION INSTRUCTIONS**

Before assembly, please make sure all components & hardware are included.



- Step 1:** Position the packing cardboard to form a protected work surface. Assembly requires two people. To assemble bench ends to the seat frame, start by inserting a screw into the "front" of the bench ends & seat first and start the screw. Then pull & slide the upper sleeve of the bench end over the top extension. Insert a screw to hold. Keep all screws loose until bench has been completely assembled.
- Step 2:** Insert the tie bar (C-2 -10x20 bolts) into the back, bottom of each bench end. Screw in bolts enough to hold securely, but do not tighten. Make sure that the bench is square and level. Tighten all loose bolts to secure.



FILE NAME =	USER NAME =	DESIGNED — TMS	REVISED —	<b>STATE OF ILLINOIS DEPARTMENT OF TRANSPORTATION</b>	<b>DETAIL SHEET 1 OF 3</b>	F.A.U. R/E	SECTION	COUNTY	TOTAL SHEETS	SHEET NO.	
		DRAWN — TMS	REVISED —			###	10-00105-00-BT	CHAMPAIGN	57	43	
PLOT SCALE =		CHECKED — A.J.B.	REVISED —			CONTRACT NO. 91478					
PLOT DATE =		DATE — 01-30-2012	REVISED —			FED. ROAD DIST. NO. 5   ILLINOIS   FED. AID PROJECT					