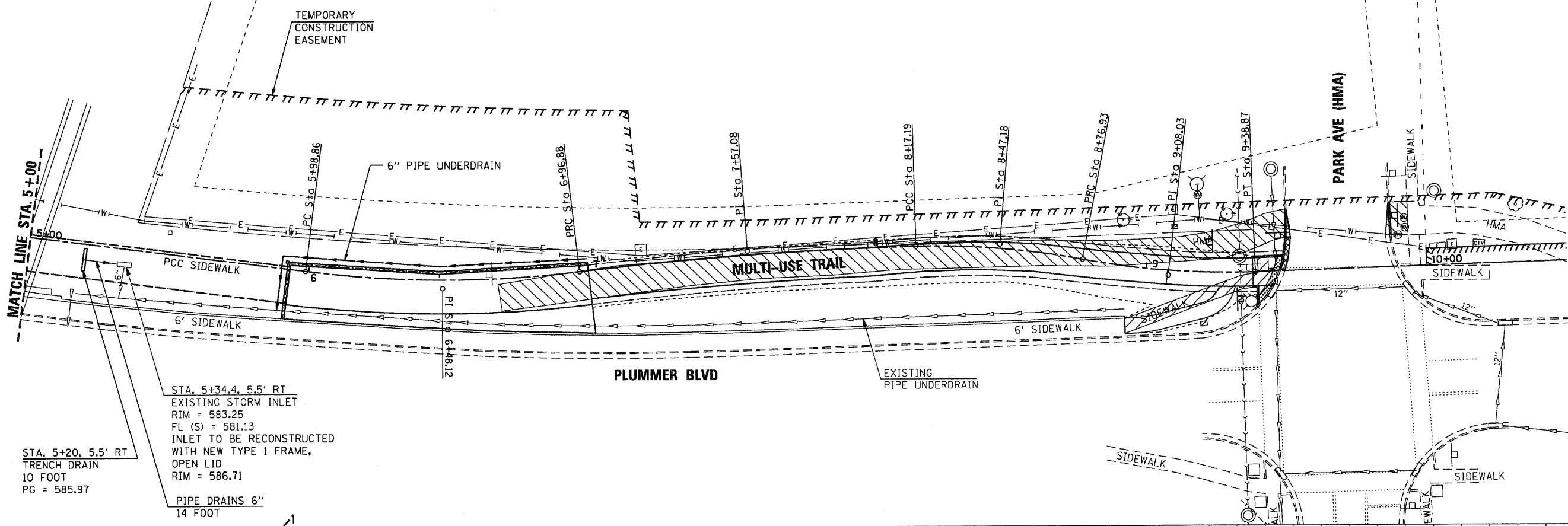


PLAN	SURVEYED	BY	DATE
	ALIGNED		
	CHECKED		
	RT. OF WAY CHECKED		
	CADD FILE NAME		
	NO.		

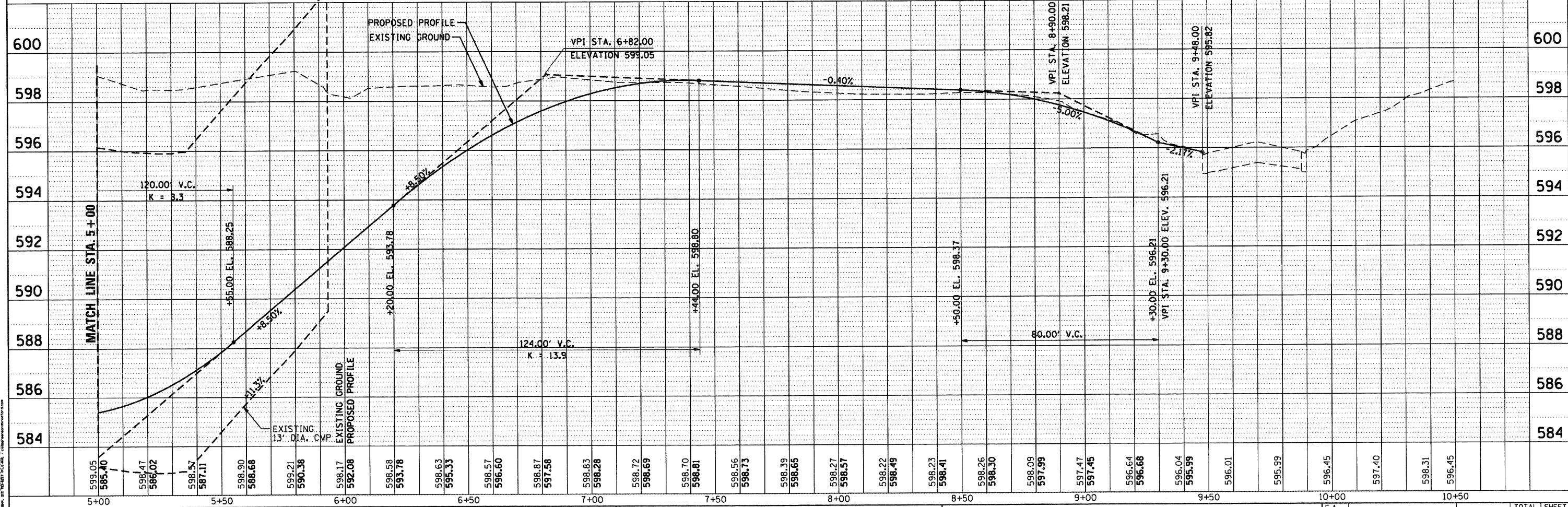


STA. 5+34.4, 5.5' RT
EXISTING STORM INLET
RIM = 583.25
FL (S) = 581.13
INLET TO BE RECONSTRUCTED
WITH NEW TYPE 1 FRAME,
OPEN LID
RIM = 586.71

STA. 5+20, 5.5' RT
TRENCH DRAIN
10 FOOT
PG = 585.97

PIPE DRAINS 6"
14 FOOT

PROFILE	SURVEYED	BY	DATE
	PLOTTED		
	GRADES CHECKED		
	STRUCTURE NOTATIONS CHECKED		
	NO.		



FILE NAME = J:\1001.22\CADD\CADD Sheets\sh-t-drain2.dgn	USER NAME = amandah	DESIGNED - WCB	REVISED -	PLUMMER BLVD MULTI-USE TRAIL VILLAGE OF CHATHAM	DRAINAGE PLAN SCALE: 20 FT/IN SHEET NO. 2 OF 2 SHEETS STA. 5+00 TO STA. 10+50	F.A. RTE.	SECTION	COUNTY	TOTAL SHEETS	SHEET NO.
PLOT SCALE = 40.0000' / 1"	CHECKED - GSK	REVISED -	PLUMMER BLVD MULTI-USE TRAIL			SANGAMON	29	10B		
PLOT DATE = 4/9/2012	DATE - 4/2/2012	REVISED -	CONTRACT NO. 93579							
ILLINOIS FED. AID PROJECT TE-0006 11091										