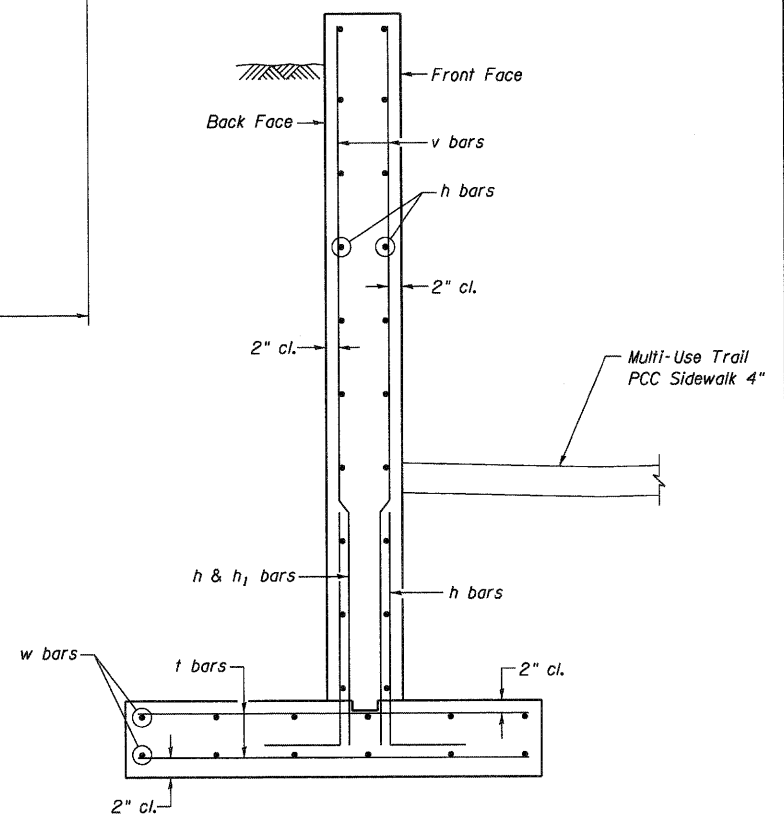
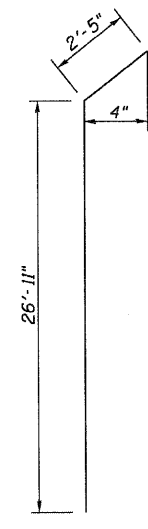


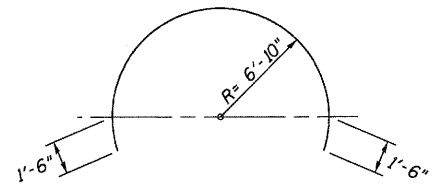
ELEVATION
(East Retaining Wall)



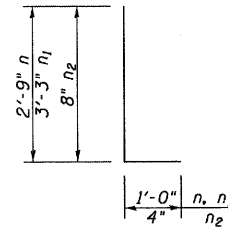
TYPICAL SECTION



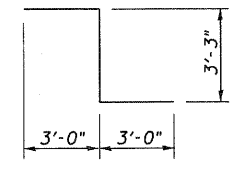
Bar h4



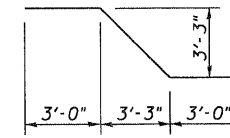
Bar o



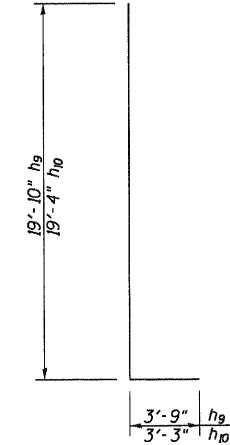
Bars n, n1 & n2



Bar w10



Bar w8



Bars h9 & h10

ELEVATION
SECTION 10-00030-00-BT
SANGAMON COUNTY
EAST RETAINING WALL

GREENE & BRADFORD, INC.
OF BRUSHFIELD

FILE NAME =	USER NAME = amandah	DESIGNED - NB	REVISED -
J:\10001.22\CADD\CADD Sheets\Retaining Wall\plendgn		DRAWN - AJH	REVISED -
PLOT SCALE = 10.0000' / 1"		CHECKED - WCB	REVISED -
PLOT DATE = 4/9/2012		DATE - 4/9/12	REVISED -

PLUMMER BLVD MULTI-USE TRAIL
VILLAGE OF CHATHAM

ELEVATION - EAST RETAINING WALL

SCALE: NTS SHEET NO. 6 OF 8 SHEETS

F.A. RTE.	SECTION	COUNTY	TOTAL SHEETS	SHEET NO.
*	10-00030-00-BT	SANGAMON	29	19
* PLUMMER BLVD MULTI-USE TRAIL			CONTRACT NO. 93579	

ILLINOIS FED. AID PROJECT TE-0006 (109)