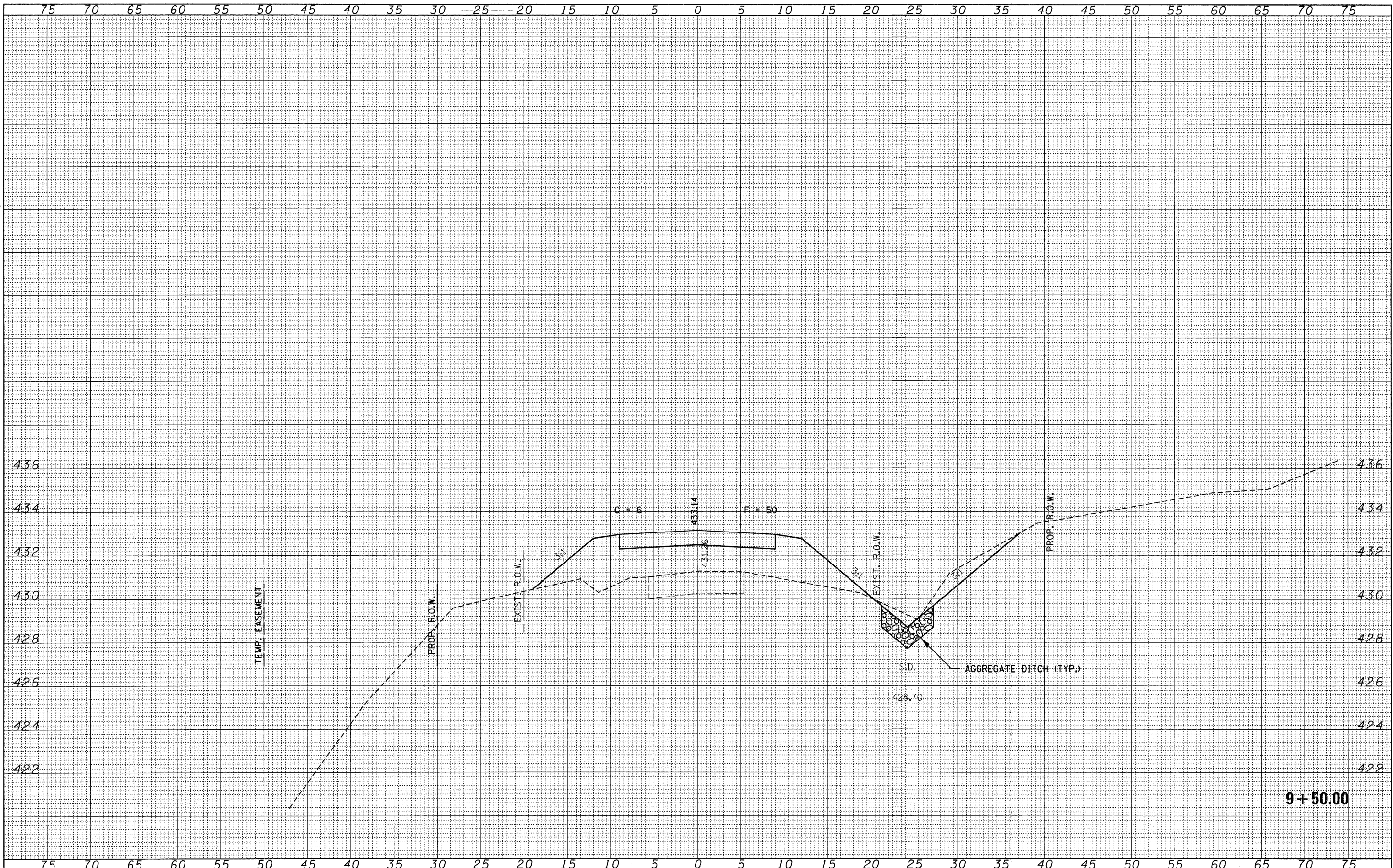


BY	DATE
SURVEYED	
REVISIONS	
FINAL SURVEY	
NOTE BOOK	
AREAS CHECKED	
NO.	

BY	DATE
ORIGINAL SURVEY	
REVISIONS	
FINAL SURVEY	
NOTE BOOK	
AREAS CHECKED	
NO.	



FILE NAME = 110175-sh1-exs.dgn	USER NAME =	DESIGNED - J.W.F.	REVISED -	STATE OF ILLINOIS CLAY COUNTY HIGHWAY DEPARTMENT	STATION CROSS SECTIONS KNEFF CEMETERY LANE		T.R.	SECTION	COUNTY	TOTAL SHEETS	SHEET NO.
HAMPTON, LENZINI AND REINICK, INC.		DRAWN - D.T.M.	REVISED -		355	07-11130-00-BR	CLAY	29	10		
3005 STEVENS DRIVE, SUITE 201 SPRINGFIELD, ILLINOIS 62703		CHECKED - S.W.M.	REVISED -		STANFORD ROAD DISTRICT		CONTRACT NO. 95667				
ILLINOIS PROFESSIONAL DESIGN FIRM 63 / PE / SE CORP. 184-00058		DATE - 03/05/12	REVISED -		SCALE: H5+V2		SHEET NO. OF SHEETS		STA. 9+50.00 TO STA. 9+50.00	ILLINOIS FED. AID PROJECT BROS-002(070)	