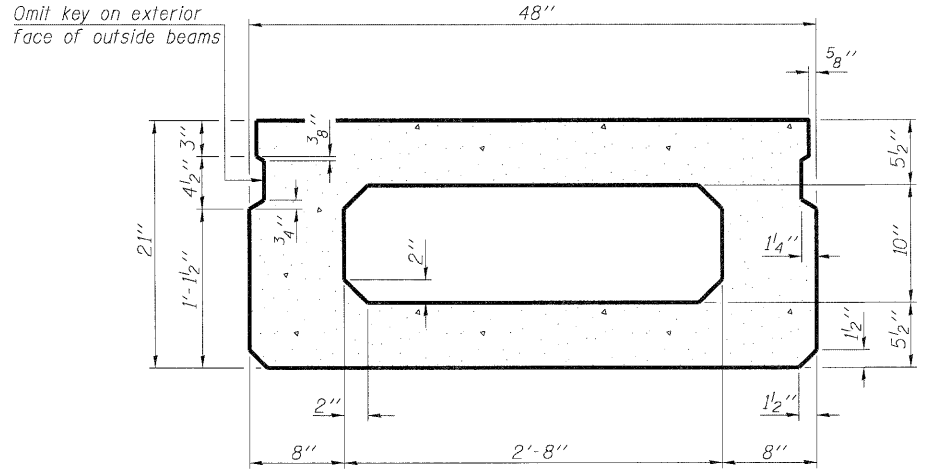
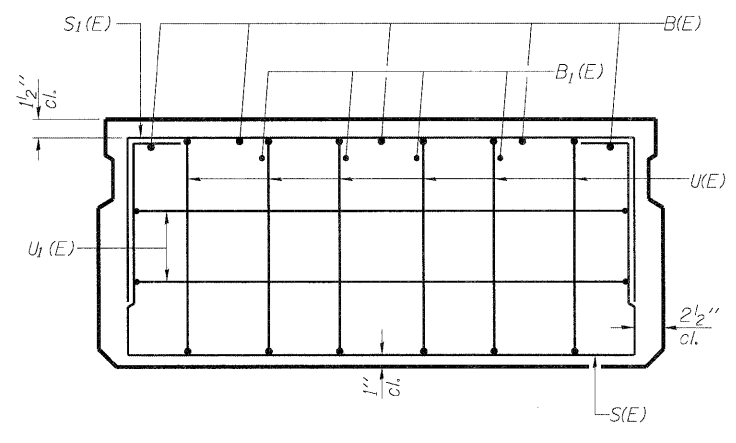


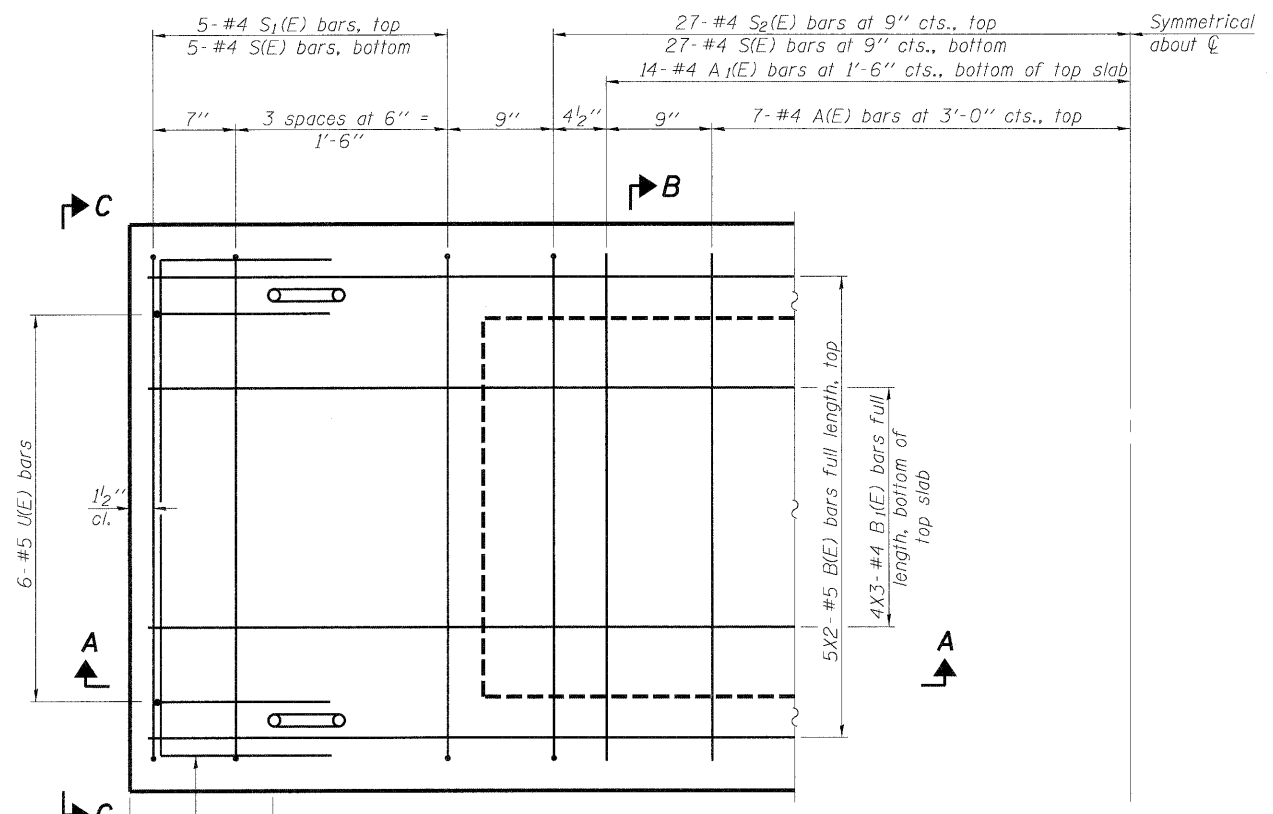
**SECTION A-A**



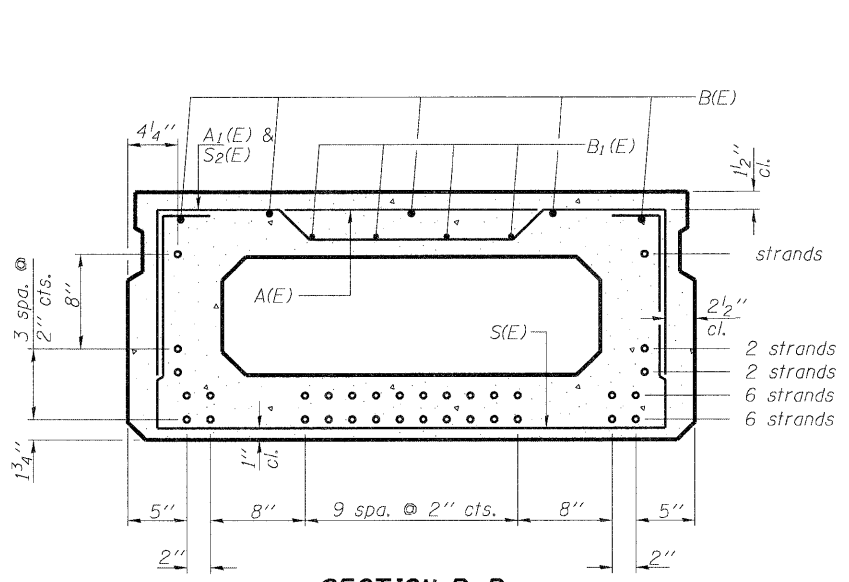
**SECTION B-B**  
(Showing dimensions)



**VIEW C-C**



**PLAN VIEW**



**SECTION B-B**

(Showing reinforcement and permissible strand locations)  
Note: Place the number of strands specified in each row symmetrically about the centerline of beam in the permissible strand locations shown.

**BAR LIST**  
**ONE BEAM ONLY**  
(For Information Only)

Bar	No.	Size	Length	Shape
A(E)	14	#4	3'-7"	—
A1(E)	28	#4	3'-10"	—
B(E)	10	#5	23'-6"	—
B1(E)	12	#4	16'-2"	—
S(E)	64	#4	7'-5"	□
S1(E)	10	#4	5'-11"	□
S2(E)	54	#4	6'-2"	□
U(E)	12	#5	4'-0"	□
U1(E)	4	#4	6'-0"	□

Note: See sheet 3 of 7 for additional details and Bill of Material.

**MINIMUM BAR LAP**

#4 bar = 2'-0"  
#5 bar = 2'-6"

Note: Spacing of S(E) and S2(E) bars may be adjusted up to 4" in the immediate area of the transverse tie diaphragms to miss the block outs for the transverse ties.

PRINTED DATE: 5/25/2012 FILE NAME: N:\PROJECTS\Coles Co Highway Dept\TR 282\CAD\Drawings\Sheets\06\_365\_Suppr.dgn

PD-2148-0 7-1-10

REVISED 05-25-12, DF/ADG

**ESI** ESI CONSULTANTS, LTD  
753 WINDSOR ROAD  
CHARLESTON, IL 61920  
(317) 948-1900  
WWW.ESICONSULTANTS.LTD.COM  
ILLINOIS DEPARTMENT OF PROFESSIONAL REGULATION REGISTRATION #184-003685

**TR 282**  
**COLES COUNTY**

**21" x 48" PPC DECK BEAM**  
**STRUCTURE NO. 015-3427**

SHEET NO 2 OF 7 SHEETS

TWP	SECTION	COUNTY	TOTAL SHEETS	SHEET NO
282	07-05136-00-BR	COLES	13	06
CONTRACT NO 02027			ILLINOIS FEDERAL AID PROJECT	