

BENCHMARK:

EAST RIM OF SANITARY MANHOLE
STA. 85+04.52, 23.88' LT.
ELEV. 623.68

WHALEN & VALERIE
VANCIL

EXIST. TREES TO REMAIN. TRANSITION PROP. SLOPE
INTO EXIST. SLOPE AT DRIVEWAY ENTRANCE.

STA. 89+86.82, SPECIAL BRIDGE DESIGN
C.I.P. CONCRETE DECK ON STEEL (W27) BEAMS.
TWO SPANS @ 65'-0", 44'-0" F.-F. PARAPETS,
47'-2" O.-O. DECK, NO SKEW

PROP. MANHOLE
(SANITARY SEWER)

LUIS & ROBIN
CACERES

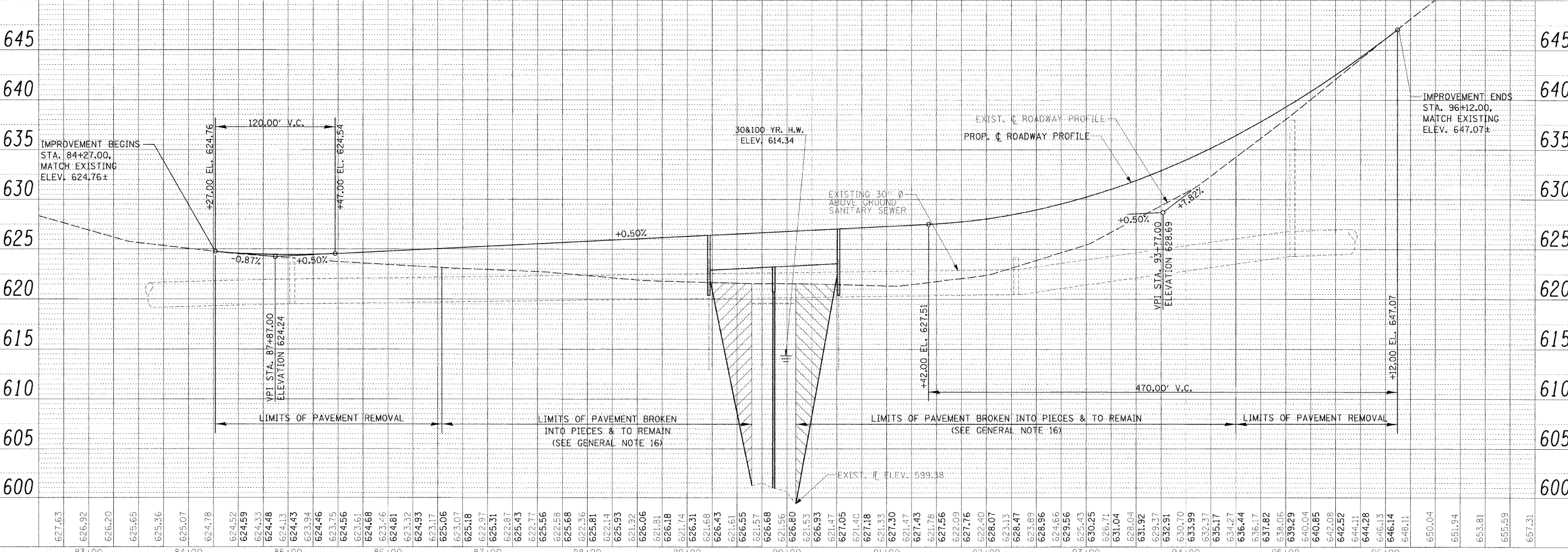
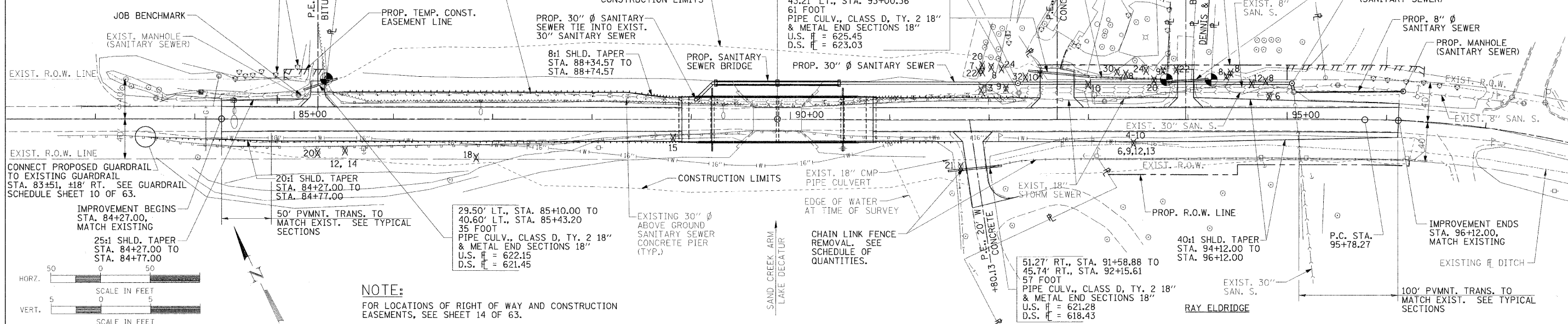
HARVEY & GERTRUDE
HINTON

N. ROBERT
FRABLE

37.12' LT., STA. 93+74.49 TO
40.88' LT., STA. 94+20.34
46 FOOT
PIPE CULV., CLASS D, TY. 2 18"
& METAL END SECTIONS 18"
U.S. \bar{H} = 629.48
D.S. \bar{H} = 628.79

DATE	
BY	
REVISIONS	
NO.	
DESCRIPTION	
DATE	
BY	
DATE	
BY	
DATE	
BY	
DATE	

DATE	
BY	
REVISIONS	
NO.	
DESCRIPTION	
DATE	
BY	
DATE	
BY	
DATE	



FILE NAME =	USER NAME = #USER#	DESIGNED -	REVISED -	STATE OF ILLINOIS DEPARTMENT OF TRANSPORTATION	PLAN AND PROFILE - SOUTH SHORES DRIVE OVER SAND CREEK ARM OF LAKE DECATUR	F.A.U. R.T.E.	SECTION	CITY	TOTAL SHEETS	SHEET NO.
#FILE#		DRAWN -	REVISED -			7398	09-00905-00-BR	DECATUR	63	13
PLOT SCALE = #SCALE#		CHECKED -	REVISED -			SCALE: AS SHOWN SHEET NO. 1 OF 1 SHEETS STA. 84+27.00 TO STA. 96+12.00			CONTRACT NO. 95687	
PLOT DATE = #DATE#		DATE -	REVISED -			ILLINOIS FED. AID PROJECT				