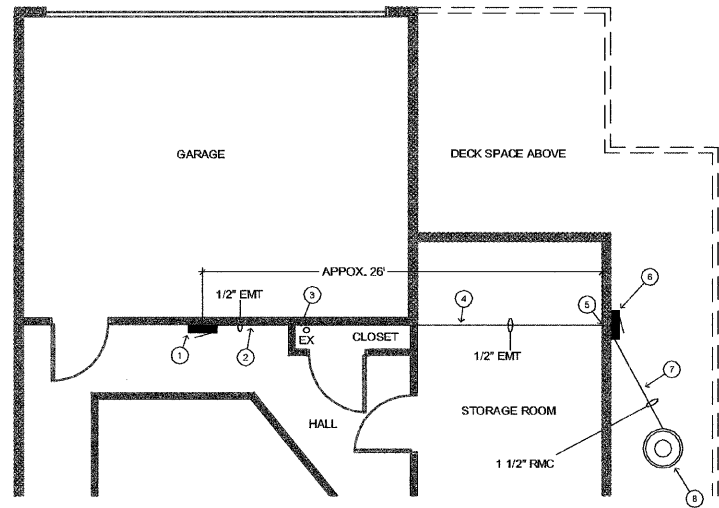


DATE	
BY	
PLAN	
SURVEYED	
ALIGNED	
FLATTENED	
CHECKED	
BY	
DATE	
NOTE BOOK	
NO.	
FILE NAME	



**GENERAL NOTES**

- ELECTRICAL CONTRACTOR TO PROVIDE ALL CONDUIT AND WIRING FROM PANEL TO PUMP.

**KEYED NOTES**

- EXISTING MAIN PANEL. REMOVE EXISTING 8 SPACE SUBPANEL BELOW AND REPLACE WITH NEW 100A, 12 SPACE SQUARE D QO LOAD CENTER. ALL LOADS ON CURRENT SUBPANEL ARE TO BE RE-CIRCUITED TO THE NEW LOAD CENTER.
- RUN CONDUIT TIGHT TO WALL TO THE CLOSET. PAINT CONDUIT WHITE WHERE EXPOSED IN HALL.
- RUN CONDUIT UP TO CEILING AND BEHIND PIPE WITHIN CLOSET KEEPING CLOSE TO THE WALL AND CEILING.
- RUN CONDUIT TIGHT TO CEILING.
- PENETRATE THROUGH CONCRETE WALL. SEAL PENETRATION.

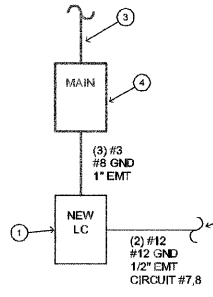
**KEYED NOTES**

- RUN CONDUIT DOWN WALL TO NEW 240V SINGLE PHASE REMOTE MOUNTED SIMPLEX CONTROL PANEL. ALL CONDUIT EXPOSED TO THE EXTERIOR IS TO BE RMC. CONTRACTOR TO INSTALL PUMP PANEL (PROVIDED W/PUMP) ON CONCRETE WALL.
- PROVIDE CONDUIT UNDERGROUND. CONDUIT SEAL AND WIRING TO PUMP. PROVIDE ALL TERMINATIONS.
- NEW 24" SIMPLEX GRINDER PUMP PACKAGE UNDER DECK. REFER TO CIVIL PLANS FOR LOCATION.

**B-1 ELECTRICAL POWER PLAN**  
SCALE: NONE

**KEYED NOTES**

- NEW 100A, 12 SPACE SQUARE D QO LOAD CENTER FEED FROM MAIN PANEL. ALL LOADS ON CURRENT SUBPANEL ARE TO BE RE-CIRCUITED TO THE NEW LOAD CENTER. LOAD CENTER TO BE MODEL Q0112L125G.
- POWER RUN TO NEW 24" SIMPLEX GRINDER PUMP PACKAGE.
- EXISTING 200 A FEED.
- EXISTING MAIN PANEL.



**A-1 ONE LINE DIAGRAM**  
SCALE: NONE

NEW LOAD CENTER		
SERVICE: 240/120V, 1PH, 3W MAIN: 100A MLO		
AMPACITY: 125A SPACES: 12		
COPPER BUS MOUNTING: SURFACE		
RATING: 10K AIC EQUIP GROUND BAR		
SQUARE D QO LOADCENTER (Q0112L125G) OR EQUAL		
CKT NO	CKT BKR	DIRECTORY
1	20/1	SPARE
2	40/2	PUMPS FOR LAWN SPRINKLER SYSTEM
3		
4	20/1	CIRCUIT FOR IRON
5	20/1	HOIST
6	15/1	DECK RECEPTACLE
7	20/2	SIMPLEX GRINDER PUMP
8		
9	20/1	SPARE
10	20/1	SPARE
11	20/1	SPARE
12	20/1	SPARE

**GENERAL NOTES**

- PAINT LOAD CENTER WHITE.

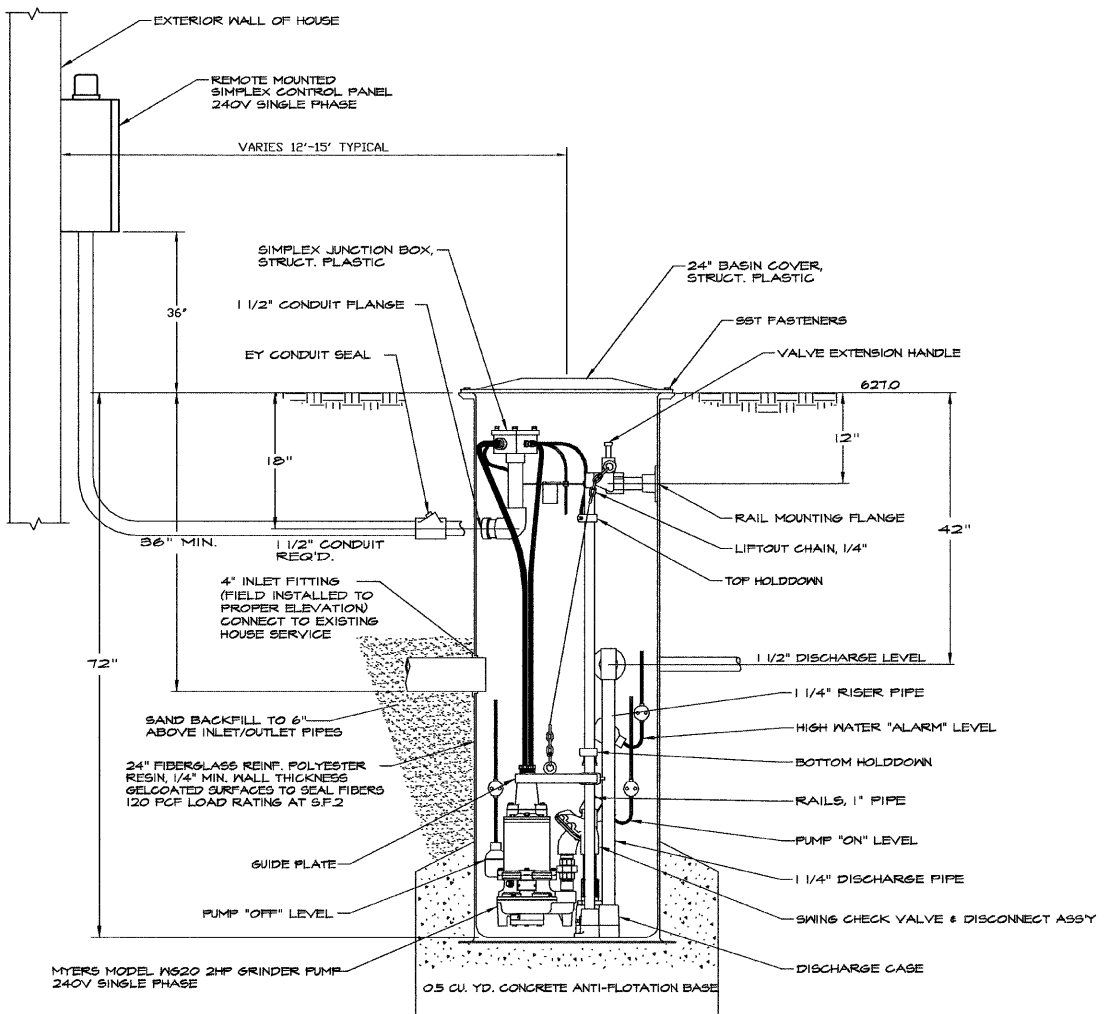
**A-4 LOAD CENTER SCHEDULE**  
SCALE: NONE

EXISTING MAIN PANEL						
SERVICE: 240/120V, 1PH, 3W SPACES: 30 MAIN: 200A MCB						
AMPACITY: 225A MOUNTING: SURFACE						
RATING: SQUARE D QO LOADCENTER SIZE: 20"Wx5.75"Dx...H						
DIRECTORY	CKT BKR	CKT NO	CKT NO	CKT BKR	DIRECTORY	
LOAD CENTER	00/2	1	2	40/2	LOAD	
		3	4			
LOAD	30/2	5	6	40/2	LOAD	
		7	8			
LOAD	20/2	9	10	20/1	LOAD	
		11	12	15/1	LOAD	
LOAD	20/1	13	14	20/1	LOAD	
LOAD	15/1	15	16	20/1	LOAD	
LOAD	20/1	17	18	20/1	LOAD	
LOAD	20/1	19	20	20/1	LOAD	
LOAD	20/1	21	22	20/1	LOAD	
LOAD	20/1	23	24	20/1	LOAD	
LOAD	20/1	25	26	20/1	LOAD	
LOAD	20/1	27	28	20/1	LOAD	
LOAD	20/1	29	30	20/1	LOAD	

**GENERAL NOTES**

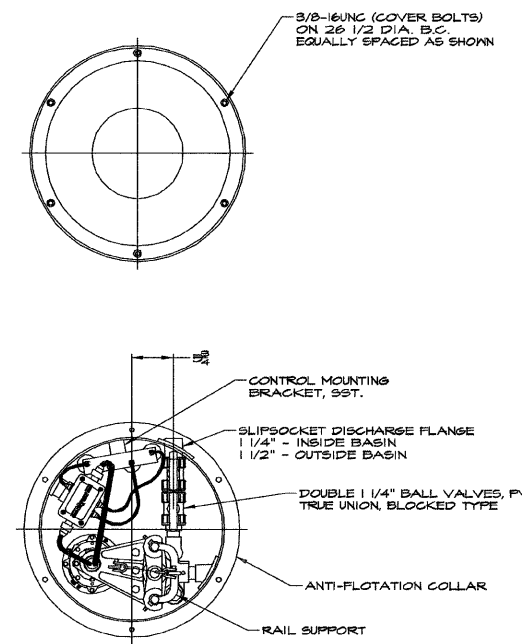
- VERIFY WHICH BREAKER FEEDS THE EXISTING SUBPANEL. REMOVE AND REPLACE WITH A 100 A BREAKER FOR NEW LOAD CENTER.

**E-4 PANEL SCHEDULE**  
SCALE: NONE



**24" SIMPLEX GRINDER PUMP PACKAGE WITH REMOTE MOUNTED CONTROL PANEL**

MYERS PUMP MODEL W620 1" x 1'-0"



**ELECTRICAL BASIC MATERIALS & METHODS**

WORK SHALL CONFORM TO NATIONAL ELECTRIC CODE, 2011, NFPA 70

**BASIC MATERIALS AND METHODS:**

- COORDINATE ALL WORK WITH OTHER TRADES.
- CONTRACTOR IS RESPONSIBLE FOR VERIFYING ALL EXISTING CONDITIONS.
- ALL CONDUIT ROUTING SHOWN IS APPROXIMATE. CONTRACTOR SHALL DETERMINE EXACT ROUTE, AND PROVIDE ANY CONDUIT FITTINGS, OFFSETS, BENDS, PULL BOXES, SUPPORTS, ETC. AS NECESSARY TO INSTALL A COMPLETE CONDUIT RUN.
- COORDINATE ALL SYSTEM AND POWER OUTAGES AND SHUTDOWNS WITH OWNER.
- CONTRACTOR SHALL PROVIDE ANY NECESSARY PERMITS AND/OR INSPECTIONS.

**WIRING METHODS:**

- WIRING INSTALLED BELOW GRADE SHALL BE TYPE RMC CONDUIT.
- RUN MINIMUM #12 INSULATED GROUND WITH ALL CIRCUITS.

**CONDUIT:**

- ALL INTERIOR CONDUIT IS TO BE EMT.
- ALL EXTERIOR CONDUIT, BOTH ABOVE AND BELOW GROUND, IS TO BE RMC.

**CONDUCTORS:**

- GENERAL USE CONDUCTORS (BUILDING WIRE) SHALL BE NEC TYPE THHN/THWN OR XHHW, ALL LISTED FOR GENERAL USE AT A MAXIMUM OF 600 VOLTS. CONDUCTORS SHALL BE ANNEALED, UNCOATED COPPER WIRE.
- MINIMUM WIRE SIZE SHALL BE 12 AWG. CONDUCTORS 8 AWG AND LARGER SHALL BE STRANDED.

**IDENTIFICATION:**

- PROVIDE ENGRAVED LAMINATED PLASTIC PLATES TO IDENTIFY ALL PANELS, SERVICE EQUIPMENT, SAFETY SWITCHES, ETC.
- CONTROL AND SIGNAL WIRES AND CABLES SHALL BE TAGGED IN ALL PULL AND JUNCTION BOXES, ALL WIREWAYS, AND WHEN TERMINATED. EACH WIRE SHALL BE IDENTIFIED WITH A WRAPAROUND NUMBER WIRE MARKER.
- LABEL ALL BREAKER SPACES IN BRANCH CIRCUIT PANELBOARDS WITH ADHESIVE NUMBERS. PLACE LABELS ADJACENT TO BREAKERS, BUT NOT DIRECTLY ON BREAKERS.

**INSPECTION AND TESTS:**

- SYSTEM SHALL BE TESTED FOR SHORTS AND GROUNDS.
- ALL HOT WIRES, IF SHORTED OR GROUNDED, SHALL BE REMOVED AND REPLACED, IF TROUBLE IS WITHIN CONDUITS.

**LEGEND**

- EX EXISTING.
- PANELBOARD, SURFACE MOUNTED.

**A-5 ELECTRICAL NOTES AND LEGEND**  
SCALE: NONE

DATE	
BY	
PROFILE	
SURVEYED	
FLATTENED	
CHECKED	
BY	
DATE	
NOTE BOOK	
NO.	
STRUCTURE	
NOTATION	
CHKD	