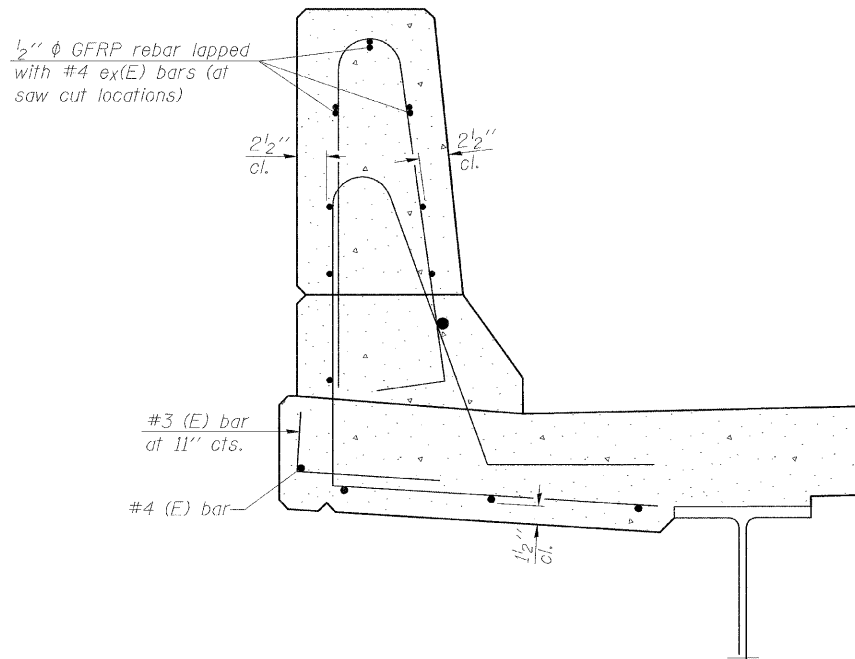
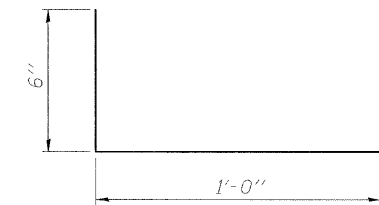


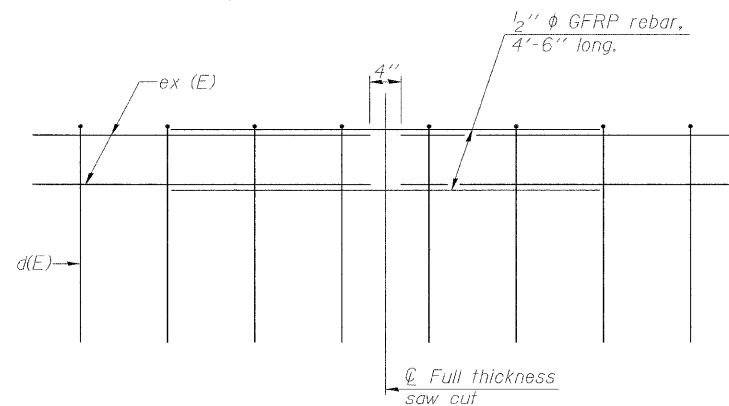
**SECTION**  
(Showing dimensions)



**SECTION**  
(Showing reinforcement clearances for slip forming and additional reinforcement bars)



**#3 (E) BAR**



**GFRP REBAR STIFFENING DETAIL**

(Place as shown in parapet section at each parapet joint location.)

**GENERAL NOTES**

All dimensions shall remain the same as shown on superstructure details, except dimensions A and B which are to be revised as shown to provide additional clearance. Additional concrete needed to revise dimension A and B = 0.0165 cu. yds./ft. of parapet.  
Place aluminum sheet in curb portion at and near piers. Full thickness saw cut at all joint locations in lieu of cork joint filler.  
Steel superstructure shown. Other superstructure types similar.

\* See Superstructure Details.

SFP-34

7-1-10

FILE NAME =	USER NAME = Brian K. Nicholson	DESIGNED - MJP	REVISED -
		CHECKED - KWB	REVISED -
		DRAWN - BKN	REVISED -
		CHECKED - KWB	REVISED -

**STATE OF ILLINOIS  
DEPARTMENT OF TRANSPORTATION**

**CONCRETE PARAPET SLIPFORMING OPTION  
STRUCTURE NO. 058-6026**

SHEET NO. 19 OF 22 SHEETS

F.A.U. RTE.	SECTION	COUNTY	TOTAL SHEETS	SHEET NO.
7598	09-00905-00-BR	MACON	63	49
CONTRACT NO. 95687				
ILLINOIS FED. AID PROJECT				

**URS**

345 EAST ASH AVENUE, SUITE B  
DECATUR, ILLINOIS 62526  
PH. 217-875-4800