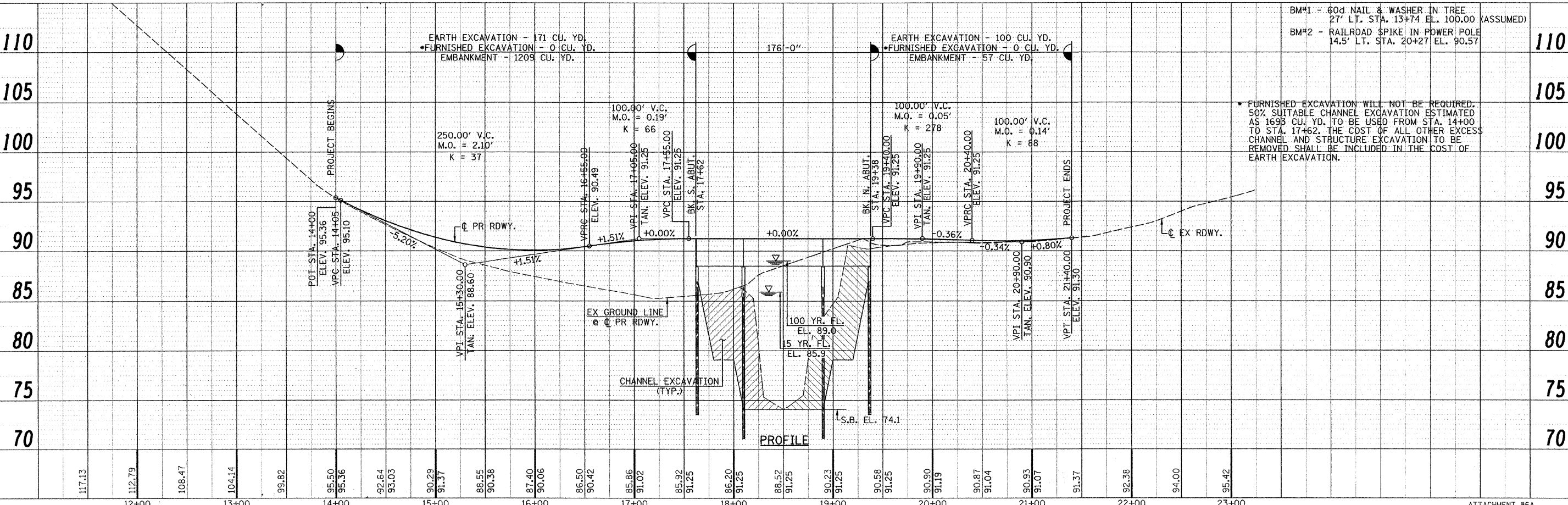
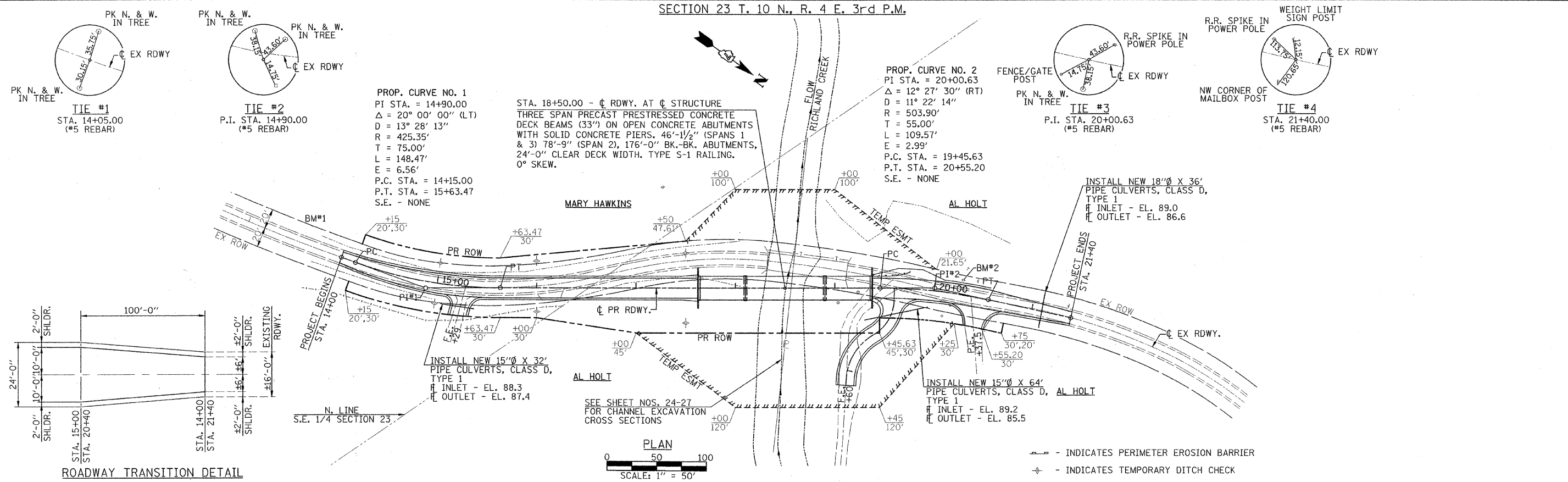


SECTION 23 T. 10 N., R. 4 E. 3rd P.M.



DATE	
BY	
REVISIONS	
NO.	
DESCRIPTION	

DATE	
BY	
REVISIONS	
NO.	
DESCRIPTION	

FILE NAME =	USER NAME = #USER#	DESIGNED -	REVISED -	<p>Allen Henderson & Associates, Inc. Civil and Structural Engineers Springfield, IL. 62703 Phone: (217)544-8033 IL Design Firm No. 184-001907</p>	SCALE: 1" = 50'	SHEET NO. 4 OF 27 SHEETS	STA. 14+00.00 TO STA. 21+40.00	ATTACHMENT #6A	
#FILE#		CHECKED -	REVISED -		T.R. RTE.	SECTION	COUNTY	TOTAL SHEETS	SHEET NO.
		DRAWN -	REVISED -		272	10-03114-00-BR	SHELBY	27	4
		CHECKED -	REVISED -		CONTRACT NO. 95688		FED. ROAD DIST. NO.		ILLINOIS FED. AID PROJECT