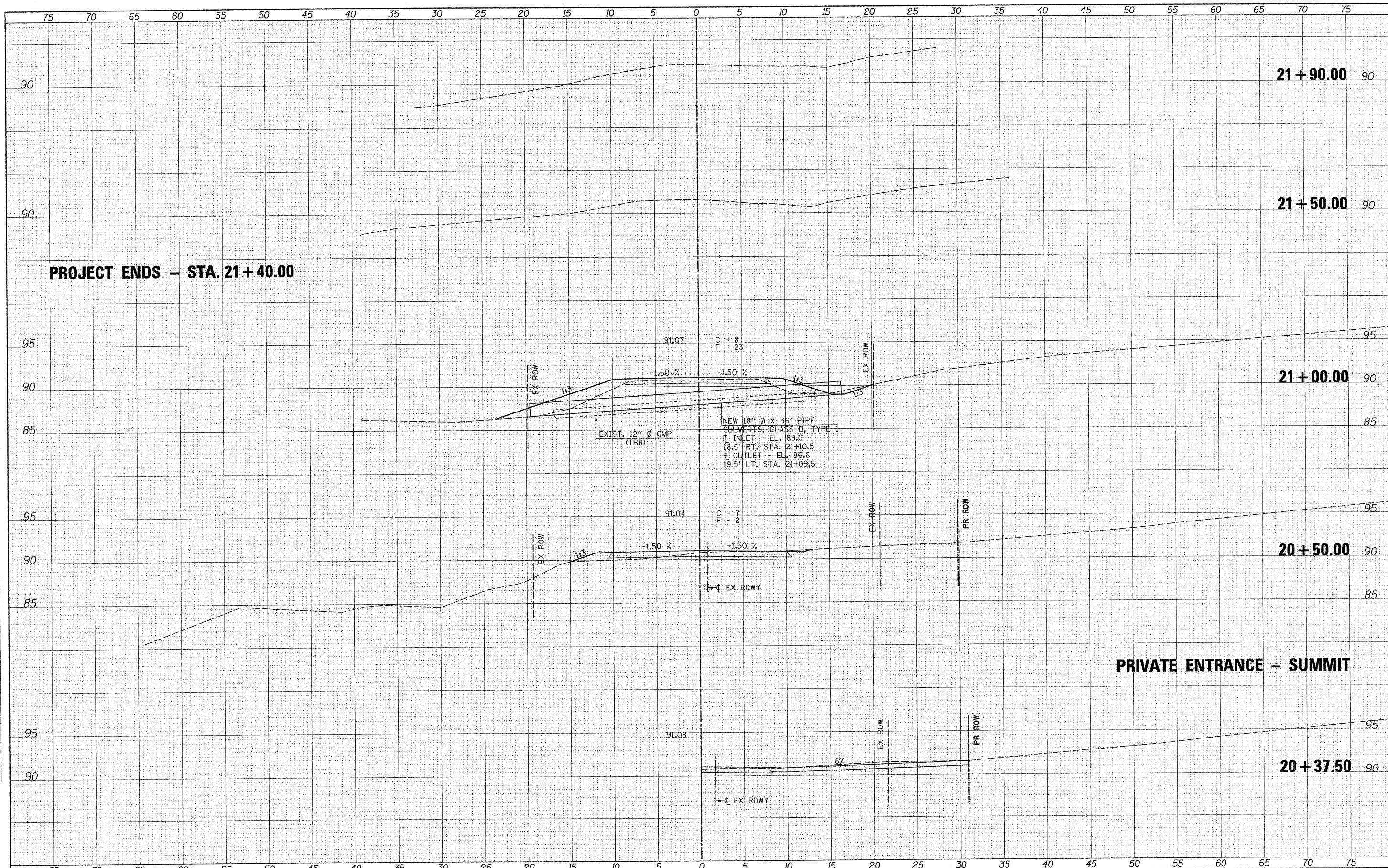



FINAL SURVEY	DATE
SURVEYED	BY
NOTED	
PLOTTED	
TEMPLATE	
AREAS	
CHECKED	
NO.	

ORIGINAL SURVEY	DATE
SURVEYED	BY
NOTED	
PLOTTED	
TEMPLATE	
AREAS	
CHECKED	
NO.	



FILE NAME =	USER NAME = #USER#	DESIGNED -	REVISED -	 Allen Henderson & Associates, Inc. Civil and Structural Engineers Springfield, IL 62703 Phone: (217)544-8033 IL Design Firm No. 184-001907	CROSS SECTIONS (T.R. 272)		T.R. RTE. 272	SECTION 10-03114-00-BR	COUNTY SHELBY	TOTAL SHEETS 27	SHEET NO. 22
#FILE#		DRAWN -	REVISED -		SCALE: 1" = 5'	SHEET NO. 17 OF 27 SHEETS	STA. 20+37.50 TO STA. 21+90.00	FED. ROAD DIST. NO. ILLINOIS FED. AID PROJECT		CONTRACT NO. 95688	
		CHECKED -	REVISED -								
		DATE -	REVISED -								