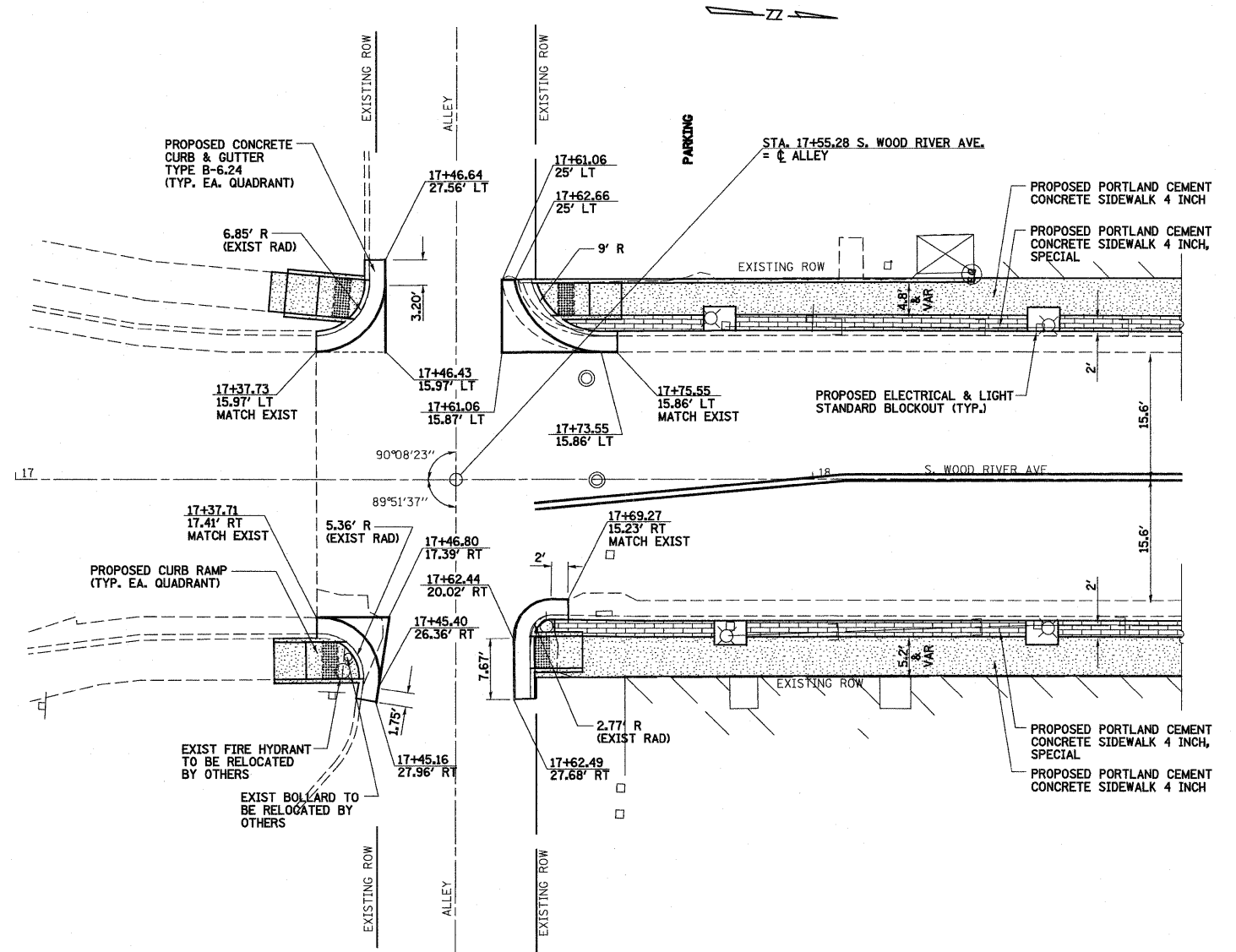
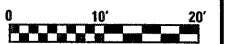


INTERSECTION DETAILS
E. FERGUSON AVE AT N WHITELAW AVE



INTERSECTION DETAILS
S. WOOD RIVER AVE AT ALLEY STA 17+55.28

NOTES:
ALL DRAINAGE PIPES FROM DOWNSPOUTS OR OTHER DRAINS CROSSING SIDEWALK TO REMAIN UNLESS OTHERWISE NOTED.
FOR ENTRANCE TREATMENTS, SEE MISCELLANEOUS DETAILS
FOR CURB RAMP DESIGN SEE SIDEWALK AND RAMP DETAILS.
FOR PROPOSED PAVEMENT RECONSTRUCTION SEE DETAIL SHEETS.
FOR PROPOSED ELECTRICAL AND LIGHT STANDARD BLOCK OUT SEE DETAIL SHEETS



FILE NAME =	USER NAME = Paul
S:\Projects\40-000-DH Wood River Streetscape\dwg\hose.dgn	Intersection det sheet.dgn
PLOT SCALE = 48,0000 ' / IN.	
PLOT DATE = 4/13/2012	

DESIGNED - JWS	REVISED -
DRAWN - WJS	REVISED -
CHECKED - BRM	REVISED -
DATE - 5-31-2011	REVISED -

CITY OF WOOD RIVER

WOOD RIVER STREETScape	
N WHITELAW AVE AND ALLEY INTERSECTION DETAILS	
SCALE: 1" = 10'	SHEET NO. 2 OF 3 SHEETS
STA.	TO STA.

F.A.U. RTE.	SECTION	COUNTY	TOTAL SHEETS	SHEET NO.
•	10-00047-01-LS	MADISON	75	16
CONTRACT NO. 97477				
FED. ROAD DIST. NO. ILLINOIS FED. AID PROJECT				

• FAU ROUTE 8971 & FAU ROUTE 9006
WOOD RIVER STREETScape PHASE 1