

F.A.U. RTE.	SECTION	COUNTY	TOTAL SHEETS	SHEET NO.
9025	09-00091-00-PV	MADISON	35	1
FEDERAL AID PROJECT ILLINOIS		CONTRACT NO. 97483		

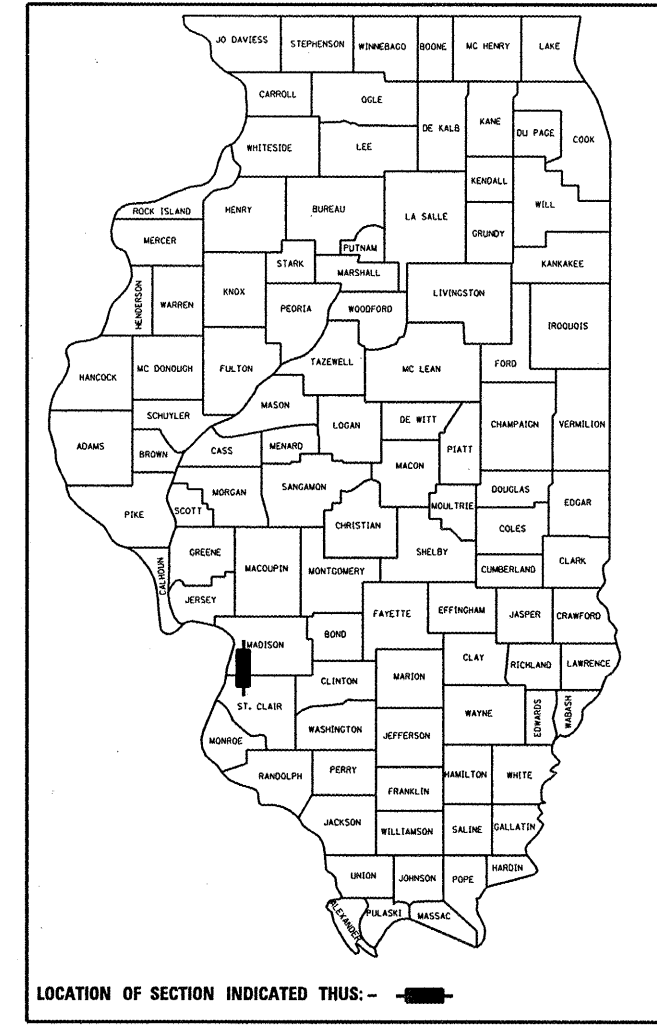
**INDEX OF SHEETS**

SHEET NO.	ITEM
1	COVER SHEET
2	GENERAL NOTES & HIGHWAY STANDARDS
3	SUMMARY OF QUANTITIES
4	TYPICAL SECTIONS
5-6	SCHEDULES
7-9	PLAN & PROFILE SHEETS
10	TRAFFIC CONTROL & DETOUR PLAN SHEET
11-12	EROSION & SEDIMENT CONTROL SHEETS
13-15	DRAINAGE PLAN & PROFILE SHEETS
16-17	ROW PLAN SHEETS
18	INTERSECTION DETAILS
19	CONSTRUCTION DETAILS
20-34	CROSS SECTIONS
35	CROSS SECTIONS - SOUTH STREET

STATE OF ILLINOIS  
DEPARTMENT OF TRANSPORTATION  
DIVISION OF HIGHWAYS

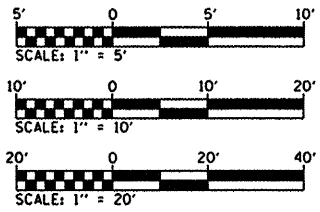
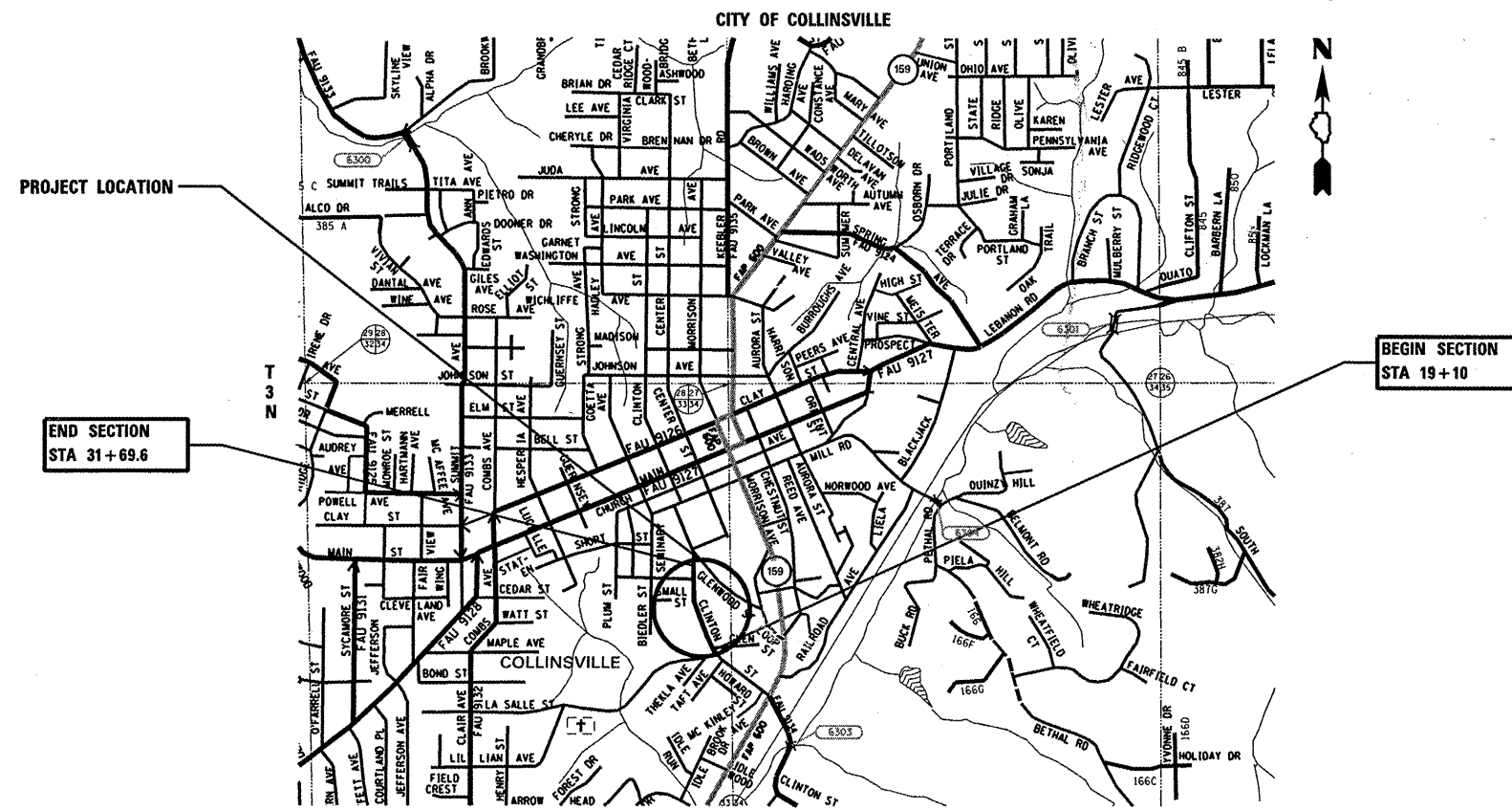
# PLANS FOR PROPOSED FEDERAL AID HIGHWAY

**SOUTH CLINTON STREET RECONSTRUCTION - PHASE 1**  
**FAU ROUTE 9025**  
**SECTION: 09-00091-00-PV**  
**PROJECT: M-5011 (288)**  
**JOB NO.: C-98-379-09**  
**CITY OF COLLINSVILLE**  
**MADISON COUNTY**



**DESIGN DESIGNATION**

ROADWAY CLASSIFICATION = URBAN COLLECTOR  
DESIGN SPEED = 30 MPH  
CURRENT ADT = 1,600  
DESIGN YEAR ADT (2030) = 2,300



FULL SIZE PLANS HAVE BEEN PREPARED USING STANDARD ENGINEERING SCALES. REDUCED SIZED PLANS WILL NOT CONFORM TO STANDARD SCALES. IN MAKING MEASUREMENTS ON REDUCED PLANS, THE ABOVE SCALES MAY BE USED.

J.U.L.I.E.  
JOINT UTILITY LOCATION INFORMATION FOR EXCAVATION  
1-800-892-0123  
OR 811

**LOCATION MAP**  
SCALE: 1" = 1000'

GROSS LENGTH OF RECONSTRUCTION: 1,259.6' (0.239 MILES)  
NET LENGTH OF RECONSTRUCTION: 1,123.0' (0.213 MILES)

**SCALE IN FEET**

PLAN	1" = 20'
PROFILE HORIZ	1" = 20'
PROFILE VERT	1" = 5'
CROSS SECTION HORIZ	1" = 10'
CROSS SECTION VERT	1" = 5'

STATE OF ILLINOIS  
DEPARTMENT OF TRANSPORTATION  
DIVISION OF HIGHWAYS

APPROVED: *[Signature]* 4-20-12 DATE  
JOHN MILLER MAYOR OF COLLINSVILLE

PASSED: 4/17/12 DATE  
*[Signature]* DISTRICT PROJECT IMPLEMENTATION ENGINEER

RELEASING FOR BID BASED ON LIMITED REVIEW: 4-17-12 DATE  
*[Signature]* OMER OSMAN, P.E. DEPUTY DIRECTOR OF HIGHWAYS REGION 1 ENGINEER

ILLINOIS  
OF  
ENGINEER  
REGISTERED  
PHILIP A. MURPHY  
IL P.E. NO. 062-054536  
EXPIRES: 11/30/2013

*[Signature]* 4/19/12  
PHILIP A. MURPHY  
IL P.E. NO. 062-054536  
EXPIRES: 11/30/2013

**OATES ASSOCIATES**  
Engineering + Architecture

ILLINOIS  
Eastport Business Center 1  
100 Lanier Court, Suite 1  
Collinsville, IL 62234  
tel 618.345.2200  
fax 618.345.7233

MISSOURI  
Laclede Gas Building  
720 Olive, Suite 1680  
St. Louis, MO 63101  
tel 314.588.8981  
fax 314.588.9605

www.oatesassociates.com

**PRINTED BY THE AUTHORITY  
OF THE STATE OF ILLINOIS**