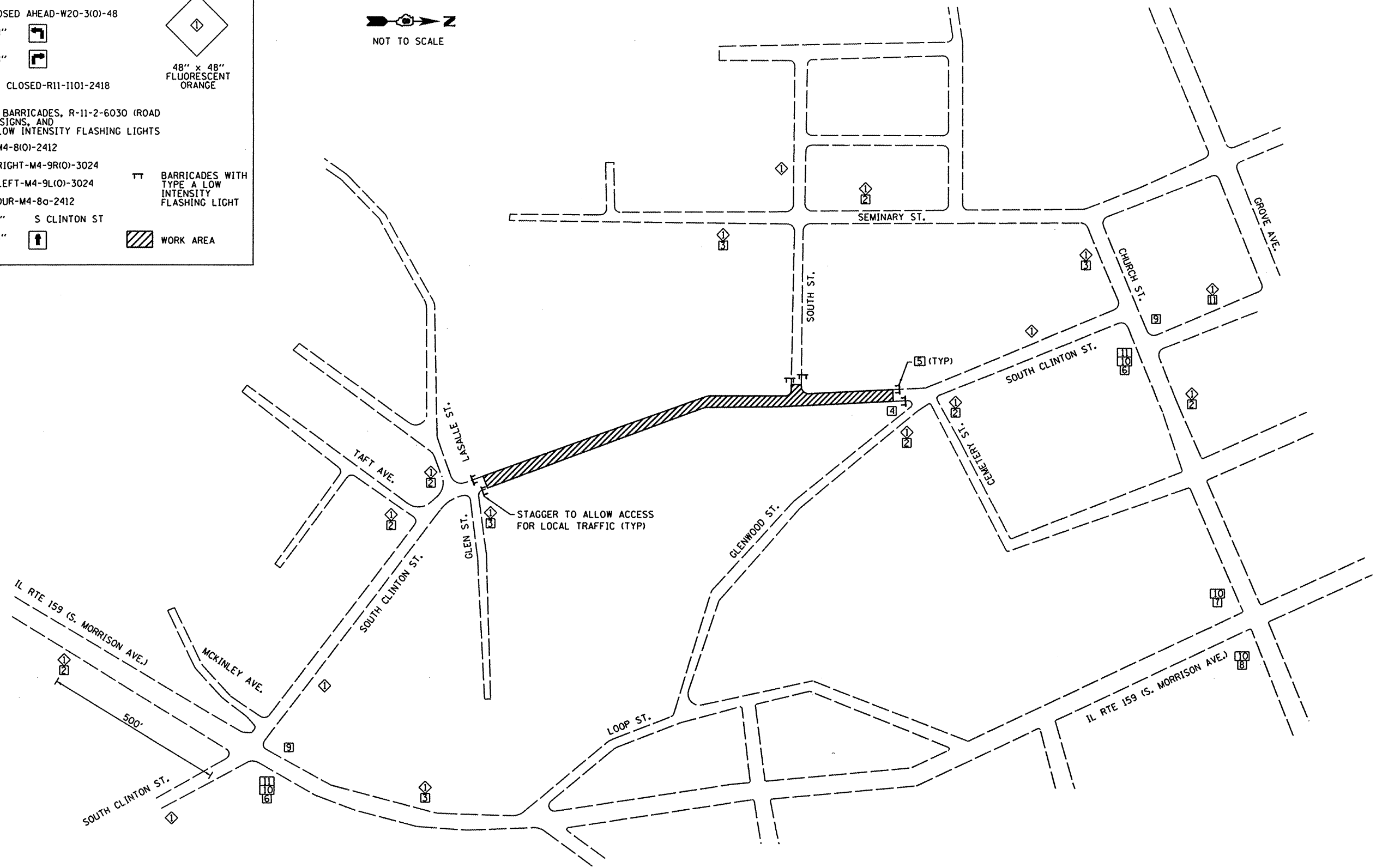
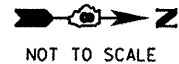


LEGEND

- ◇ ROAD CLOSED AHEAD-W20-3101-48
- 24" x 24" [Symbol]
- 24" x 24" [Symbol]
- 48" x 48" FLUORESCENT ORANGE [Symbol]
- 4 SIDEWALK CLOSED-R11-1101-2418
- 5 TYPE III BARRICADES, R-11-2-6030 (ROAD CLOSED) SIGNS, AND TYPE A LOW INTENSITY FLASHING LIGHTS
- 6 DETOUR-M4-8(O)-2412
- 7 DETOUR RIGHT-M4-9R(O)-3024
- 8 DETOUR LEFT-M4-9L(O)-3024
- 9 END DETOUR-M4-8G-2412
- 10 36" x 12" S CLINTON ST
- 11 24" x 24" [Symbol]
- [Symbol] BARRICADES WITH TYPE A LOW INTENSITY FLASHING LIGHT
- [Symbol] WORK AREA



NOTES

ALL CONSTRUCTION SIGNS TO BE INCLUDED IN THE COST OF TRAFFIC CONTROL AND PROTECTION, (SPECIAL).
 ACCESS TO ENTRANCES SHALL BE MAINTAINED AT ALL TIMES.
 THE CONTRACTOR SHALL MAINTAIN DRAINAGE THROUGHOUT CONSTRUCTION.

FILE NAME =	USER NAME = randy	DESIGNED -	REVISED -	STATE OF ILLINOIS DEPARTMENT OF TRANSPORTATION	TRAFFIC CONTROL & DETOUR PLAN SHEET	F.A.U. RTE. 9025	SECTION 09-00091-00-PV	COUNTY MADISON	TOTAL SHEETS 35	SHEET NO. 10	
h:\p\28018\microstation\cadd\sheets\0828018-sht-staging.dgn		DRAWN -	REVISED -			S CLINTON ST RECONSTR - PH 1					
		CHECKED -	REVISED -			SCALE: NTS	SHEET NO. 1 OF 1 SHEETS	STA.	TO STA.	FED. ROAD DIST. NO.	ILLINOIS FED. AID PROJECT
		DATE -	REVISED -								