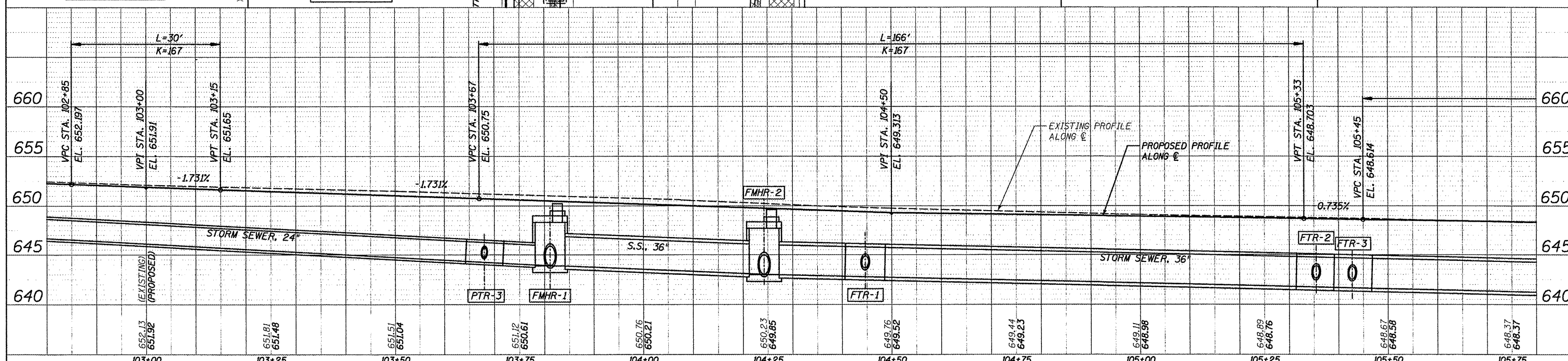
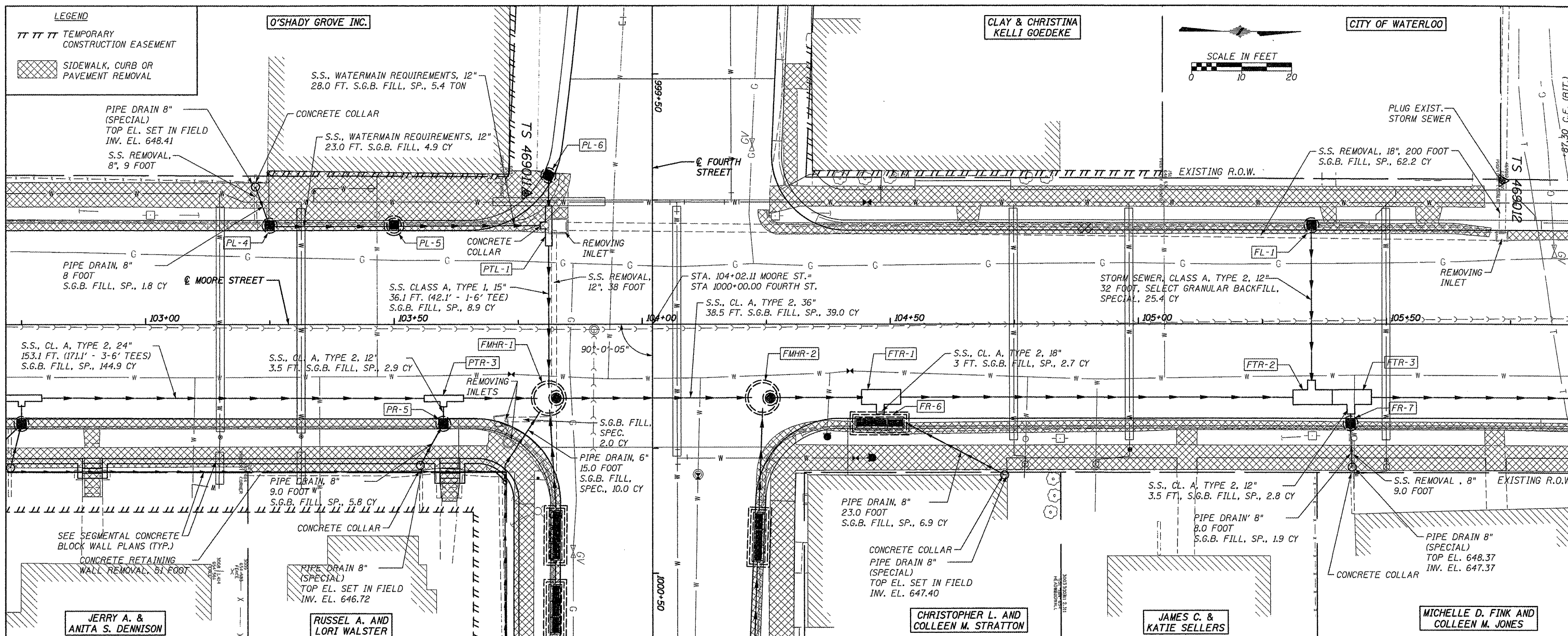


DATE	
BY	
REVISIONS	
NO.	DESCRIPTION
1	
2	
3	
4	
5	
6	
7	
8	
9	
10	
11	
12	
13	
14	
15	
16	
17	
18	
19	
20	
21	
22	
23	
24	
25	
26	
27	
28	
29	
30	
31	
32	
33	
34	
35	
36	
37	
38	
39	
40	
41	
42	
43	
44	
45	
46	
47	
48	
49	
50	
51	
52	
53	
54	
55	
56	
57	
58	
59	
60	
61	
62	
63	
64	
65	
66	
67	
68	
69	
70	
71	
72	
73	
74	
75	
76	
77	
78	
79	
80	
81	
82	
83	
84	
85	
86	
87	
88	
89	
90	
91	
92	
93	
94	
95	
96	
97	
98	
99	
100	

DATE	
BY	
REVISIONS	
NO.	DESCRIPTION
1	
2	
3	
4	
5	
6	
7	
8	
9	
10	
11	
12	
13	
14	
15	
16	
17	
18	
19	
20	
21	
22	
23	
24	
25	
26	
27	
28	
29	
30	
31	
32	
33	
34	
35	
36	
37	
38	
39	
40	
41	
42	
43	
44	
45	
46	
47	
48	
49	
50	
51	
52	
53	
54	
55	
56	
57	
58	
59	
60	
61	
62	
63	
64	
65	
66	
67	
68	
69	
70	
71	
72	
73	
74	
75	
76	
77	
78	
79	
80	
81	
82	
83	
84	
85	
86	
87	
88	
89	
90	
91	
92	
93	
94	
95	
96	
97	
98	
99	
100	



FILE NAME = 6185-ss2.dgn	USER NAME = USERDESCR.	DESIGNED - HMG: CRW & EDW	REVISED -	<b>STATE OF ILLINOIS</b> <b>DEPARTMENT OF TRANSPORTATION</b> STA. 102+80 - STA. 105+80, F.A.U. 9315 (MOORE ST.) REMOVALS & STORM SEWER SCALE: SHEET NO. OF SHEETS STA. TO STA.	F.A. RTE. 9315	SECTION 06-00032-03-PV	COUNTY MONROE	TOTAL SHEETS 93	SHEET NO. 32
H:\6185\Water\ss2\Phase\VCADD\ROADWAY\6185-ss2.dgn	VCADD\6185-ss2.dgn	DRAWN - HMG: CRW, EDW, & KOJ	REVISED -		FED. ROAD DIST. NO.	ILLINOIS FED. AID PROJECT	CONTRACT NO. 97488		
PLOT SCALE = 1:2.2228" / 1"		CHECKED - HMG: CRW	REVISED -						
PLOT DATE = 3/28/2012		DATE -	REVISED -						

HMG ENGINEERS, INC., 1075 LAKE ROAD, PO BOX 70, CARLYLE, IL 62231 PHONE (618) 594-3711 WWW.HMGENGINEERS.COM