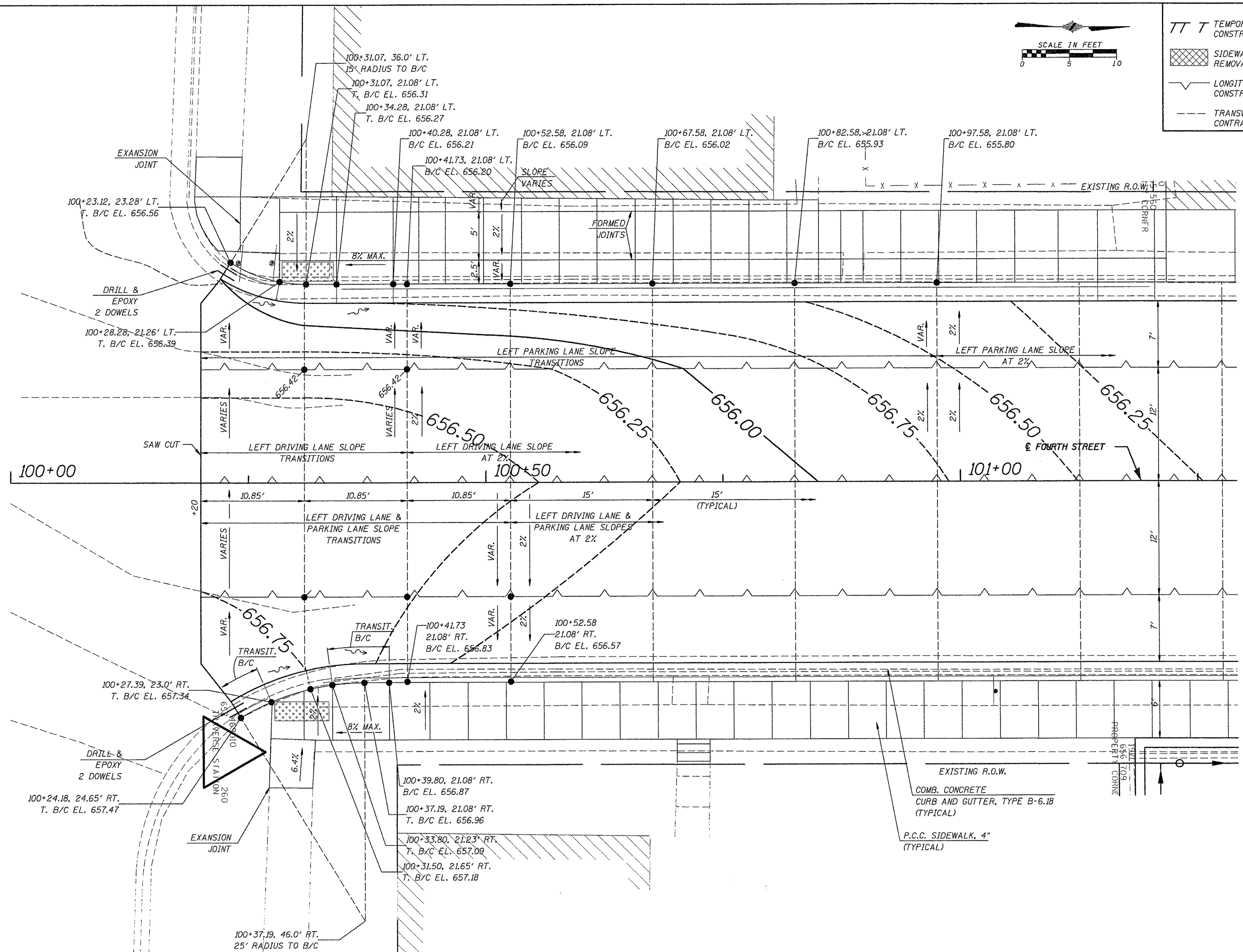


**LEGEND**

TT T	TEMPORARY CONSTRUCTION EASEMENT	-----	SAWED JOINT WITH NO TIE BARS OR DOWELS
[Cross-hatched box]	SIDEWALK OR PAVEMENT REMOVAL	-----	TRANSVERSE EXPANSION JOINT
[Wavy line]	LONGITUDINAL SAWED OR CONSTR. JOINT	[Diagonal hatching]	HMA SURFACING
---	TRANSVERSE CONTRACTION JOINT	[Stippled box]	AGGREGATE SURFACE COURSE, TY. A, 8"



FILE NAME = 6185-Intersectd1-park.dgn  
 USER NAME = USERDESCR.  
 DRAWN = HMG: CRW, EDW, & KOJ  
 CHECKED = HMG: CRW  
 DATE = 3/28/2012

DESIGNED = HMG: CRW & EDW  
 REVISIONS:  
 1. HMG: CRW, EDW, & KOJ  
 2. HMG: CRW

**STATE OF ILLINOIS**  
**DEPARTMENT OF TRANSPORTATION**

**INTERSECTION DETAIL**  
**MOORE ST. & PARK ST.**

SCALE: SHEET NO. OF SHEETS STA. TO STA.

F.A. RTE.	SECTION	COUNTY	TOTAL SHEETS	SHEET NO.
9315	06-00032-03-PV	MONROE	93	44
CONTRACT NO. 97488				
FED. ROAD DIST. NO. ILLINOIS FED. AID PROJECT				

HMG ENGINEERS, INC., 1075 LAKE ROAD, PO BOX 70, CARLYLE, IL 62231 PHONE (618) 594-3711 WWW.HMGENGINEERS.COM