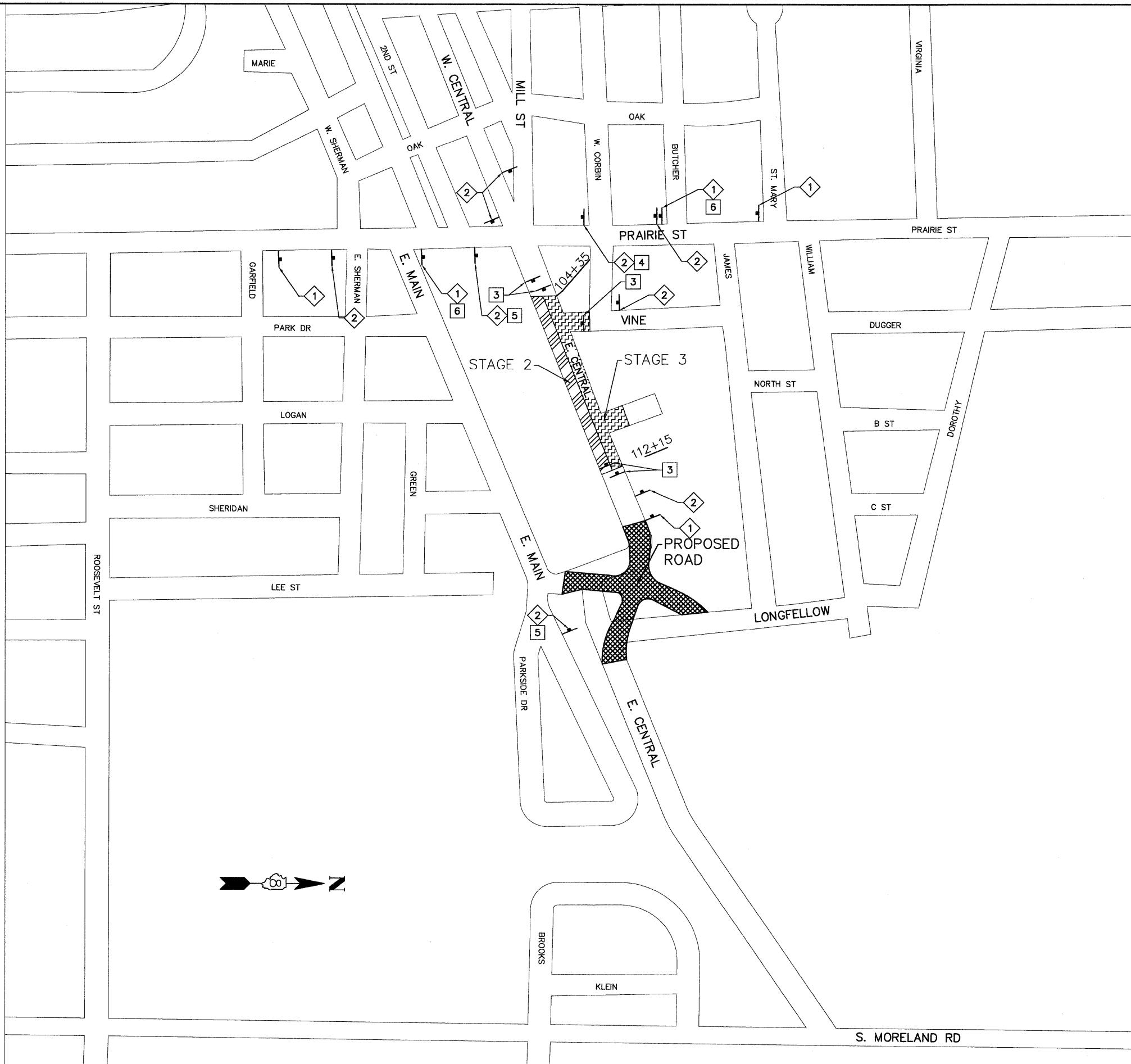

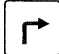


THIS TRAFFIC CONTROL PLAN SHALL BE USED IN CONJUNCTION WITH STANDARD 701501.



LEGEND

- 1 ROAD CLOSED AHEAD  
W20-3(0)-48
- 2 ROAD CONSTRUCTION AHEAD  
W20-1(0)-48
- 3 TYPE III BARRICADES WITH ROAD  
CLOSED SIGN (R-11-2-4830)
- 4 24"x24"  
(LEFT ARROW) 
- 5 24"x24"  
(RIGHT ARROW) 
- 6 W16-8(0)-1808  
(ALL 4" LETTERS) E. CENTRAL ST.

PLAN	DATE	BY
SURVEYED		
ALIGNED		
CHECKED		
RT. OF WAY		
CHECKED		
ADD FILE NAME		

PROFILE	DATE	BY
SURVEYED		
GRADES		
CHECKED		
S.M. NOTED		
STRUCTURE		
NOTATIONS		
CHKD		

08026-sht-StagingR01.dwg

USER NAME = Robert Watson

DESIGNED - M.J.R.

REVISED -

DRAWN - R.A.W.

REVISED -

CHECKED - E.R.O.

REVISED -

DATE - 3/21/12

REVISED -

PLOT SCALE =

PLOT DATE = 3/21/2012

**STATE OF ILLINOIS  
DEPARTMENT OF TRANSPORTATION**

**SUGGESTED STAGES OF CONSTRUCTION AND TRAFFIC CONTROL - STAGES 2 AND 3**

SCALE: 1"=200' SHEET NO. 26 OF 62 SHEETS STA. 104+35 TO STA. 112+15

F.A.U. RTE.	SECTION	COUNTY	TOTAL SHEETS	SHEET NO.
8959	08-00026-00-WR	MADISON	62	26
CONTRACT NO. 97493				
BETHALTO		ILLINOIS FED. AID PROJECT		