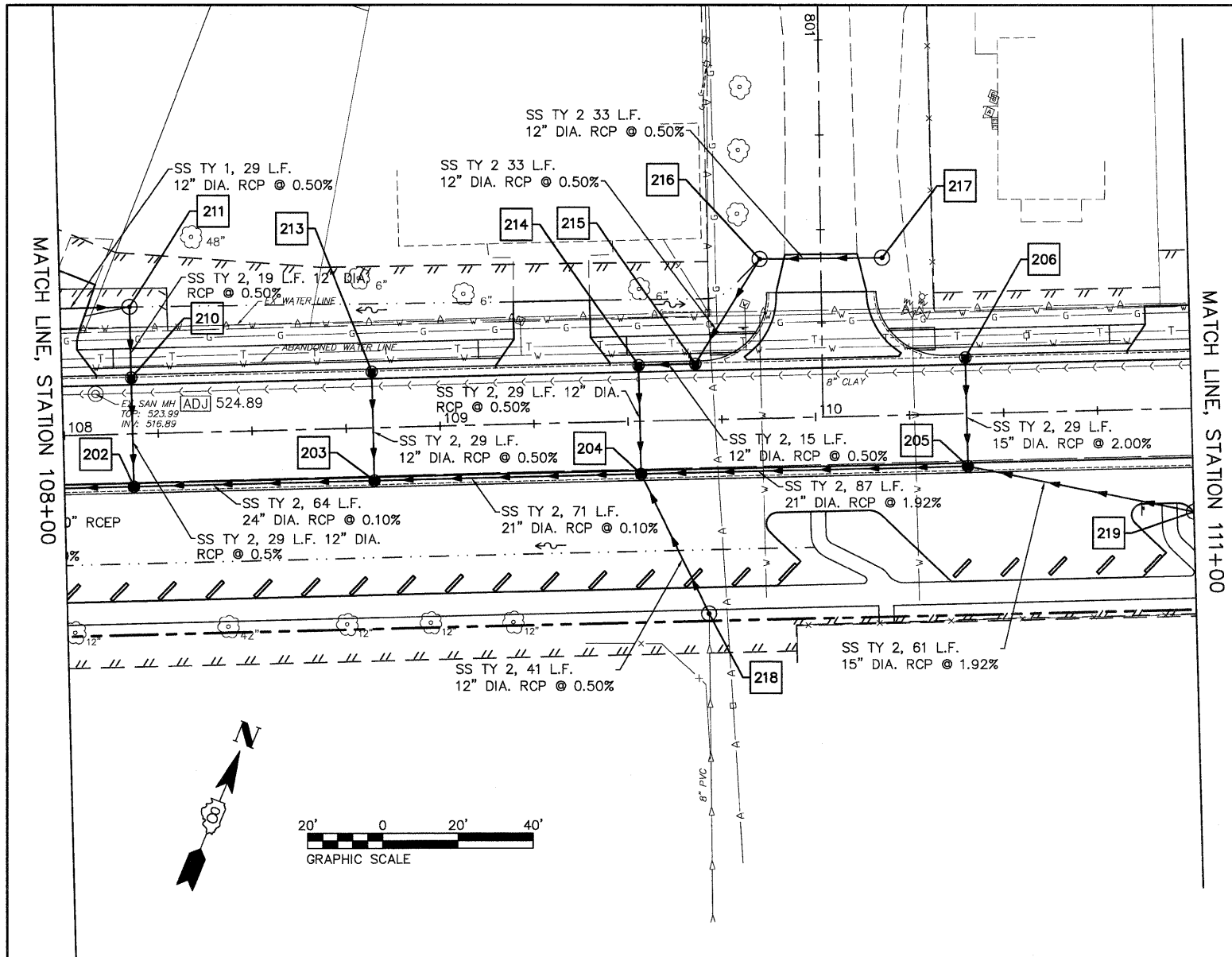


DATE: _____ BY: _____
 SURVEYED _____ CHECKED _____
 ALIGNED _____ CHECKED _____
 INT. OF WAY CHECKED _____
 NOTE BOOK NO. _____
 PLOT FILE NAME _____

DATE: _____ BY: _____
 SURVEYED _____ CHECKED _____
 GRADES _____ CHECKED _____
 DIM. NOTED _____
 STRUCTURE NOTATIONS CIPRD _____
 NOTE BOOK NO. _____



STRUCT NUMBER	STATION	OFFSET	RIM ELEV	INVERT ELEV.	STRUCTURE TYPE
E. CENTRAL ST.					
202	108+18.16	13.00' RT	524.94	519.78	MANHOLE T-A, FLAT SLAB TOP, 4' DIA., TYPE 24 FRAME & GRATE
203	108+82.16	13.00' RT	525.43	519.84	MANHOLE T-A, FLAT SLAB TOP, 4' DIA., TYPE 24 FRAME & GRATE
204	109+53.16	13.00' RT	525.97	519.91	MANHOLE T-A, FLAT SLAB TOP, 4' DIA., TYPE 24 FRAME & GRATE
205	110+40.16	13.00' RT	526.74	521.58	MANHOLE T-A, FLAT SLAB TOP, 4' DIA., TYPE 24 FRAME & GRATE
206	110+40.16	13.00' RT	526.74	522.10	INLET T-B, FLAT SLAB TOP, TYPE 3V FRAME & GRATE
NORTH ST.					
210	108+18.16	13.00' LT	524.94	519.93	INLET T-B, FLAT SLAB TOP, TYPE 3V FRAME & GRATE
211*	108+18.16	33.83' LT	523.90	520.03	INLET T-B, FLAT SLAB TOP W/ TYPE 8 GRATE
213	108+82.16	13.00' LT	525.43	519.99	INLET T-B, FLAT SLAB TOP, TYPE 3V FRAME & GRATE
214	109+53.16	13.00' LT	525.97	520.06	INLET T-B, FLAT SLAB TOP, TYPE 3V FRAME & GRATE
215	109+68.28	13.00' LT	526.09	520.14	INLET T-B, FLAT SLAB TOP, TYPE 3V FRAME & GRATE
218*	109+70.31	51.40' RT	525.10	520.12	INLET T-B, W/ TYPE 8 GRATE
219*	111+00.00	27.43' RT	527.31	522.75	INLET T-B, FLAT SLAB TOP W/ TYPE 1 FRAME AND OPEN LID

NOTE: STATION, OFFSET AND RIM ELEVATIONS ARE TO THE EDGE OF PAVEMENT UNLESS NOTED. *INDICATES MEASUREMENTS AT CENTER OF STRUCTURE, **INDICATES MEASUREMENTS AT END OF FLARED END SECTION.

