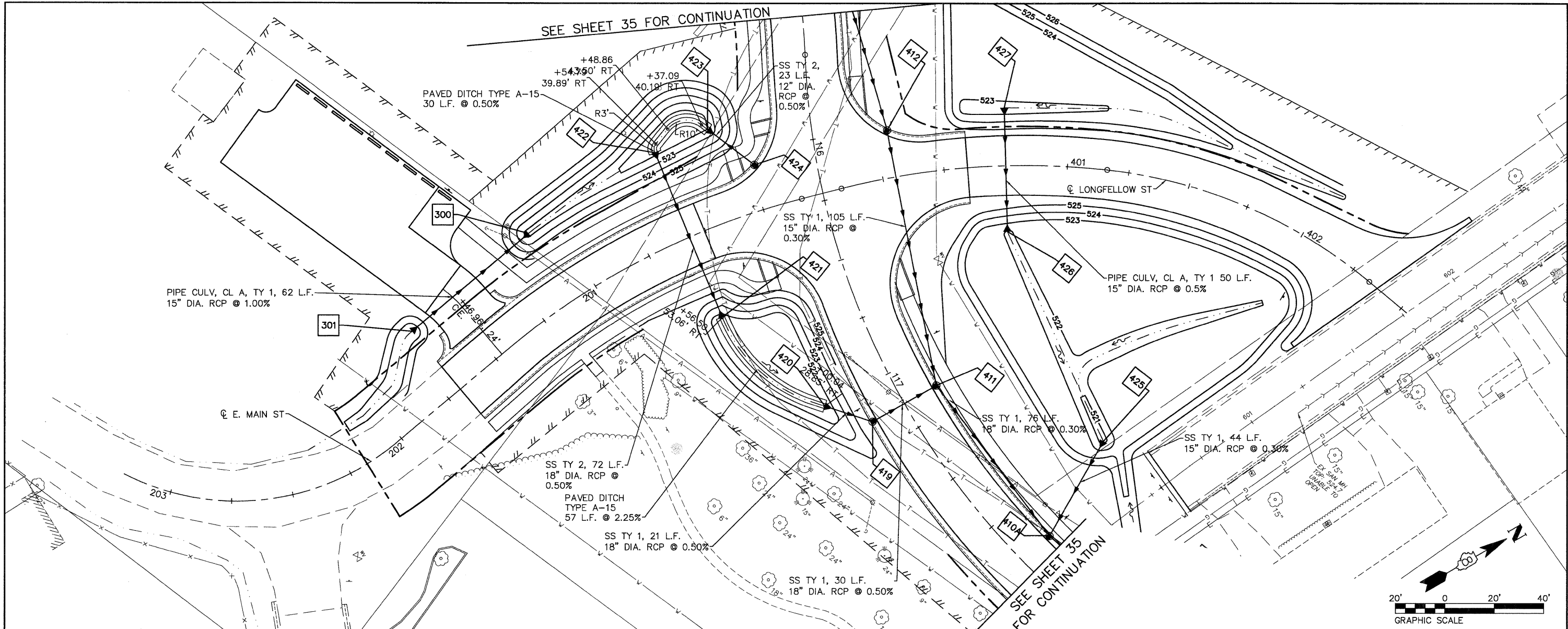


DATE: _____ BY: _____
 SURVEYED _____
 PLAN NOTE BOOK _____
 RT. OF MAIN CHECKED _____
 NO. _____

DATE: _____ BY: _____
 SURVEYED _____
 PROFILE NOTE BOOK _____
 GRADES CHECKED _____
 B.M. NOTED _____
 STRUCTURE NOTATIONS CHKD _____
 NO. _____



STRUCTURE NUMBER	STATION	OFFSET	RIM ELEV.	INVERT ELEV.	STRUCTURE TYPE	
540	300	201+10.65	32.61' RT	---	522.48	FLARED END SECTION, 15"
	301	201+68.89	30.47' RT	---	523.10	FLARED END SECTION, 15"
NOTE: STATION, OFFSET AND RIM ELEVATIONS ARE TO THE EDGE OF PAVEMENT UNLESS NOTED. *INDICATES MEASUREMENTS AT CENTER OF STRUCTURE, **INDICATES MEASUREMENTS AT END OF FLARED END SECTION.						
535						535
530						530
525						525
520						520
515						515
						515

08026-Sht-Drain.dwg	USER NAME = Robert Watson	DESIGNED - M.J.R.	REVISED -	STATE OF ILLINOIS DEPARTMENT OF TRANSPORTATION	DRAINAGE AND UTILITY PLAN	F.A.U. RTE. 8959	SECTION 08-00026-00-WR	COUNTY MADISON	TOTAL SHEETS 62	SHEET NO. 38	
	PLOT SCALE =	CHECKED - E.R.O.	REVISED -			SCALE: 1:20H, 1:5V SHEET NO. 38 OF 62 SHEETS STA. 133+00 TO STA. 135+46.48					
	PLOT DATE = 3/21/2012	DATE - 3/21/12	REVISED -			CONTRACT NO. 97493					
						BETHALTO ILLINOIS FED. AID PROJECT					