

PAVEMENT MARKING LEGEND

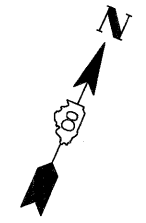
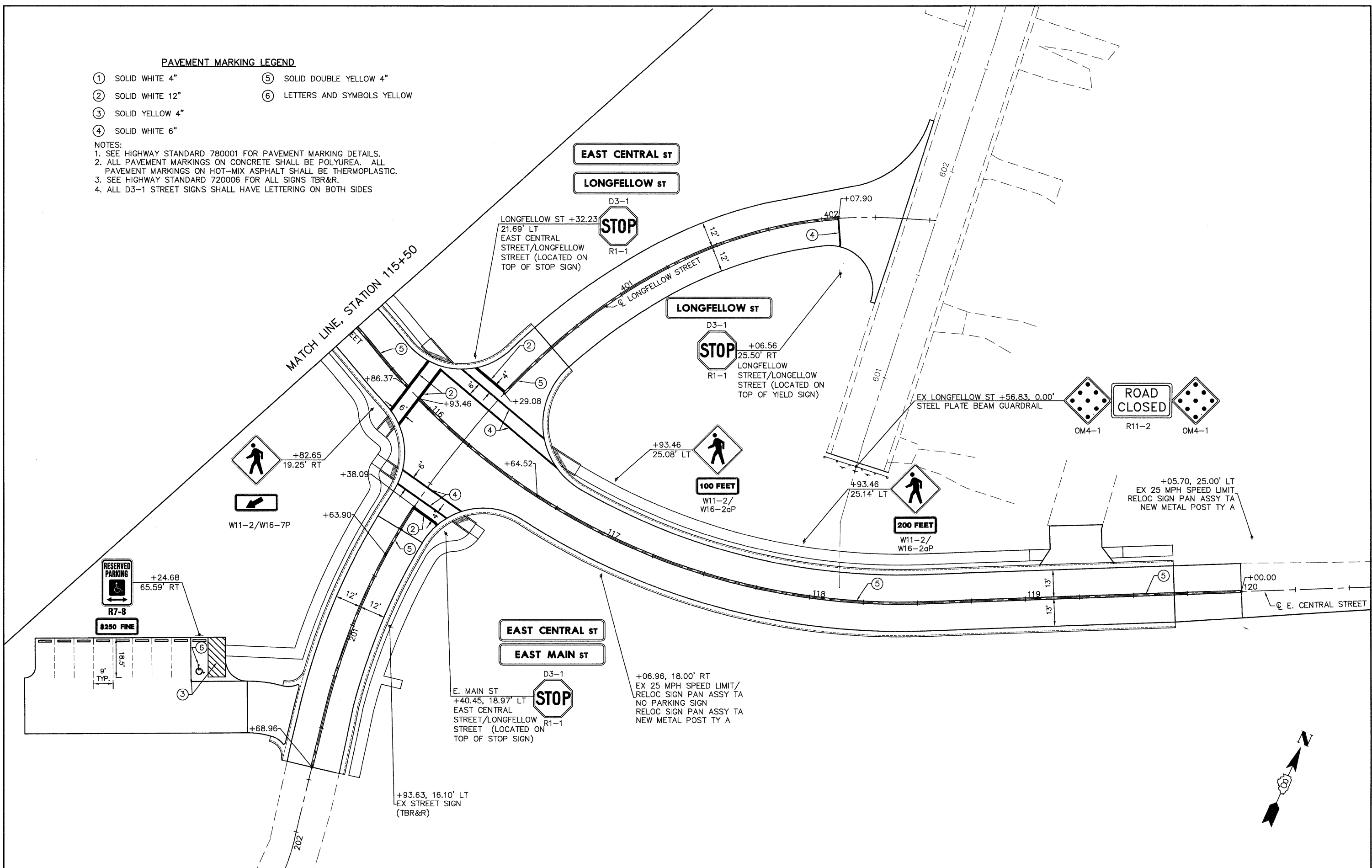
- ① SOLID WHITE 4"
- ② SOLID WHITE 12"
- ③ SOLID YELLOW 4"
- ④ SOLID WHITE 6"
- ⑤ SOLID DOUBLE YELLOW 4"
- ⑥ LETTERS AND SYMBOLS YELLOW

NOTES:

1. SEE HIGHWAY STANDARD 780001 FOR PAVEMENT MARKING DETAILS.
2. ALL PAVEMENT MARKINGS ON CONCRETE SHALL BE POLYUREA. ALL PAVEMENT MARKINGS ON HOT-MIX ASPHALT SHALL BE THERMOPLASTIC.
3. SEE HIGHWAY STANDARD 720006 FOR ALL SIGNS TBR&R.
4. ALL D3-1 STREET SIGNS SHALL HAVE LETTERING ON BOTH SIDES

DATE	
BY	
PLAN	
NO.	
DATE	
BY	
PROFILE	
NO.	

DATE	
BY	
PROFILE	
NO.	



08026-sht-Pave Mark.dwg	USER NAME = Robert Watson	DESIGNED - M.J.R.	REVISED -	STATE OF ILLINOIS DEPARTMENT OF TRANSPORTATION	PAVEMENT MARKING & SIGNAGE PLAN	F.A.U. RTE. 8959	SECTION 08-00026-00-WR	COUNTY MADISON	TOTAL SHEETS 62	SHEET NO. 47		
	PLOT SCALE =	CHECKED - E.R.O.	REVISED -			SCALE: 1"=20'	SHEET NO. 47 OF 62 SHEETS	STA. 114+00	TO STA. 119+00	CONTRACT NO. 97493		
	PLOT DATE = 3/21/2012	DATE - 3/21/12	REVISED -			BETHALTO ILLINOIS FED. AID PROJECT						