

ROUTE	SECTION	COUNTY	TOTAL SHEETS	SHEET NO.
TR 93	00-01199-00-BR	MASSAC	18	2
PROJECT NO. BROS-127(18)			CONTRACT NO. 99438	

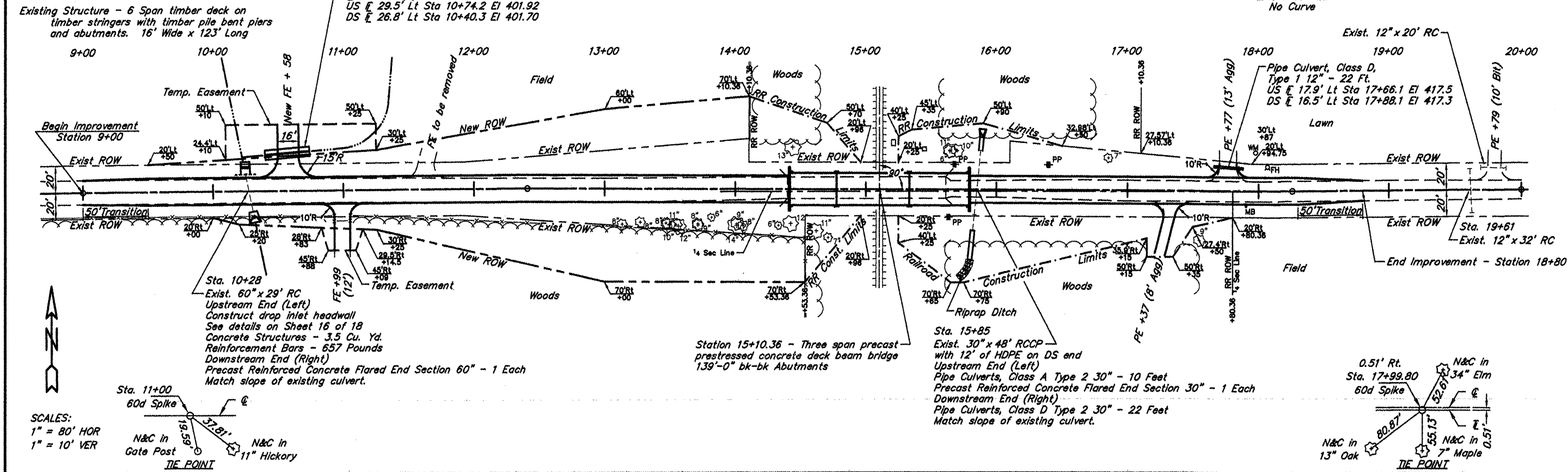
B.M.#1 - SW Corner Headwall
13' Lt. Sta. 10+17
Elev. 405.00

B.M.#2 - Dbl. Nail in PP
19' Lt. Sta. 16+40
Elev. 419.44

PI Sta 12+40.94
Δ 0°41'04" Rt.
No Curve

Tree Removal Acres
Sta. 10+00 - 14+75 Rt. 0.33 Ac
Sta. 14+11 - 14+70 Lt. 0.06 Ac
Sta. 15+55 - 16+30 Lt. 0.05 Ac
Sta. 15+60 - 17+25 Rt. 0.12 Ac
Total 0.55 Ac

PI Sta 18+25.87
Δ 0°41'16" Lt.
No Curve



SCALES:
1" = 80' HOR
1" = 10' VER

