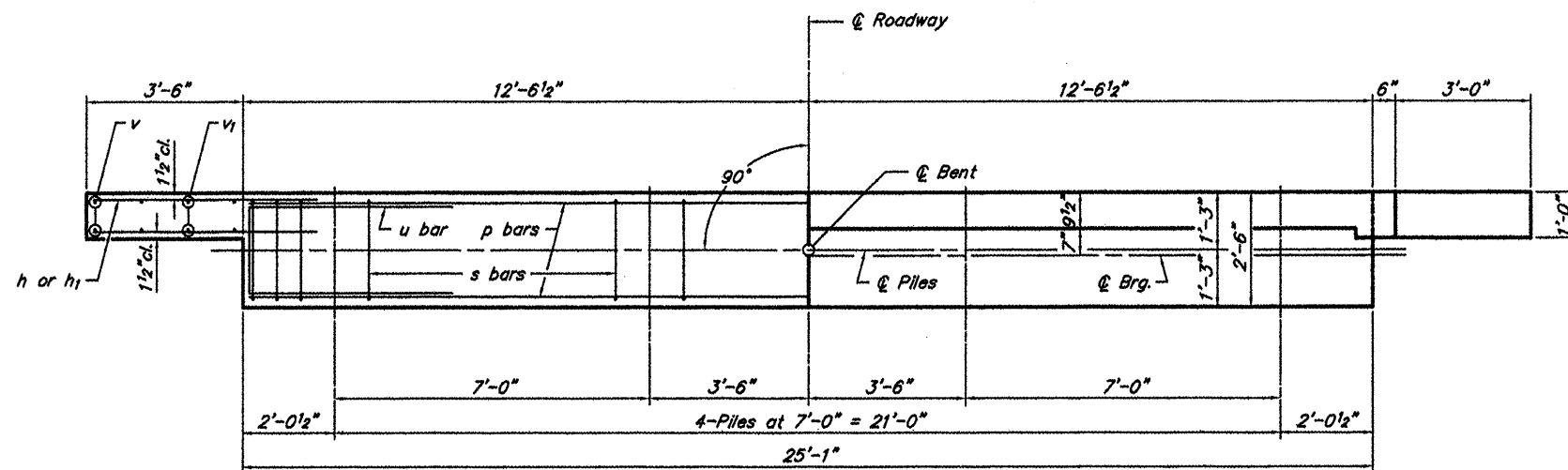
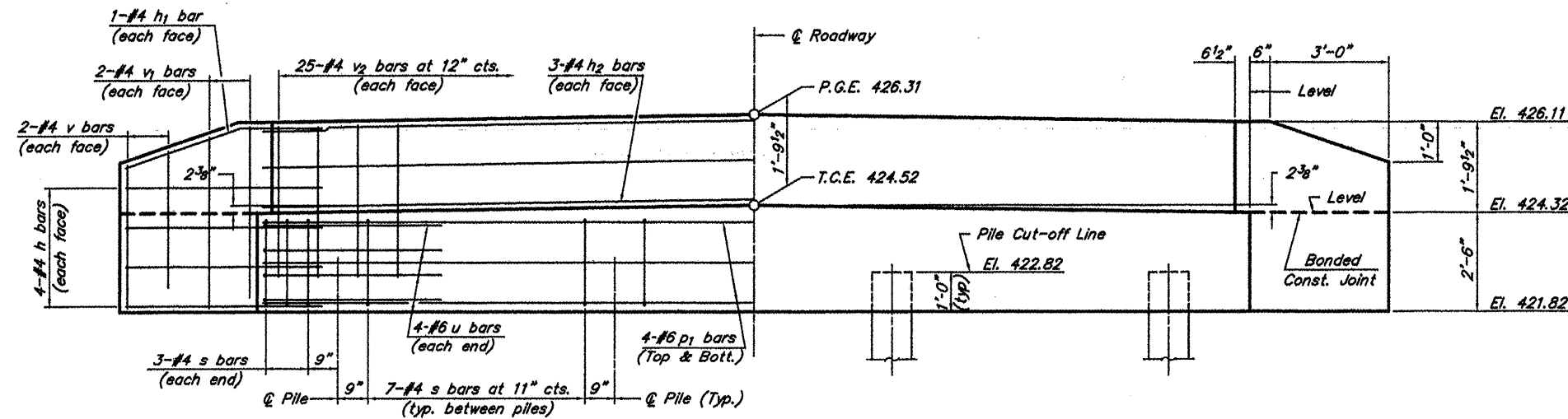


ROUTE	SECTION	COUNTY	TOTAL SHEETS	SHEET NO.
TR 93	00-01199-00-BR	MASSAC	18	11
PROJECT NO. BROS-127(18)			CONTRACT NO. 99438	



PLAN



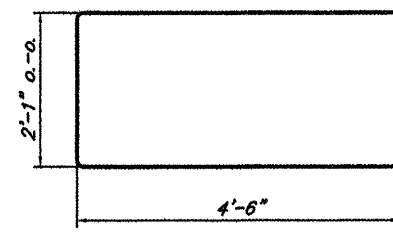
ELEVATION

NOTES

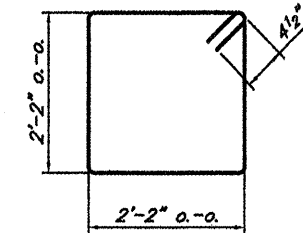
- The Backwall and the portion of the Wingwalls above the bonded construction joint shall be cast against the in-place beam.
- Reinforcement bars shall conform to A.A.S.H.T.O. M-31 or M-322, Grade 60.

DESIGN STRESSES

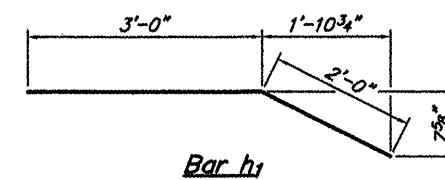
$f_c' = 3,500 \text{ psi}$
 $f_y = 60,000 \text{ psi}$



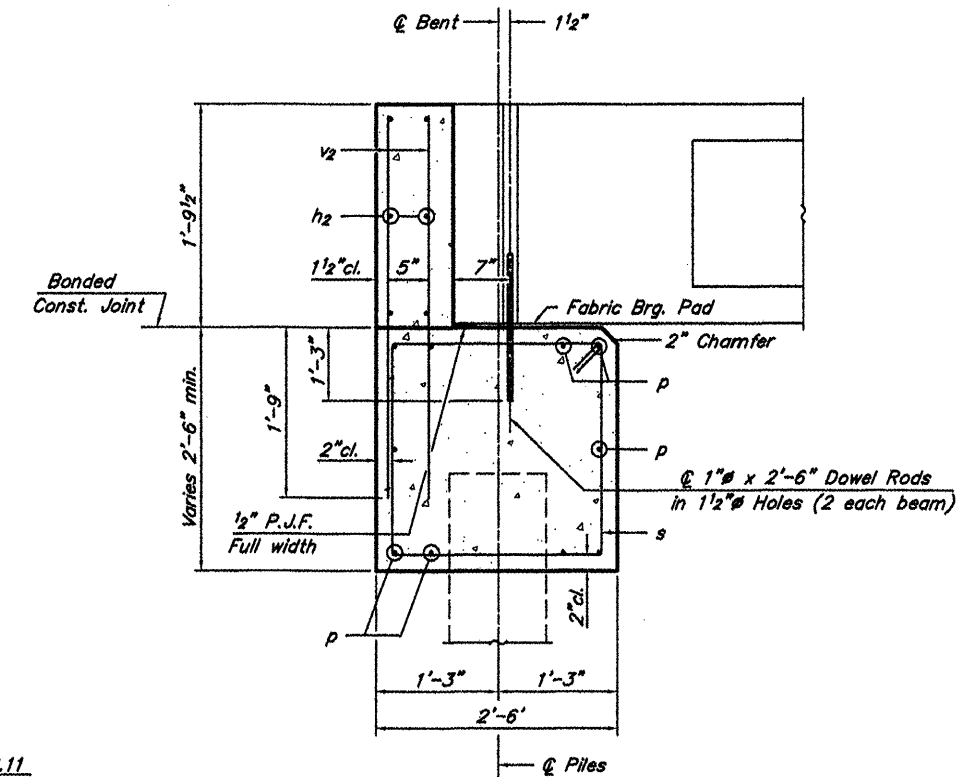
Bar u



Bar s



Bar h1



SECTION THRU ABUTMENT
(At Right Angles)

BILL OF MATERIAL FOR ONE ABUTMENT

Bar	No.	Size	Length	Shape
h	16	#4	5'-0"	—
h1	4	#4	5'-0"	—
h2	6	#4	24'-9"	—
p	10	#7	24'-9"	—
s	27	#4	9'-5"	□
u	8	#6	11'-1"	—
v	8	#4	3'-2"	—
v1	8	#4	3'-11"	—
v2	50	#4	3'-5"	—
Concrete Structures			8.4	Cu. Yds.
Reinforcement Bars			1,127	Lbs.

ABUTMENT
TOWNSHIP ROUTE 93 (SEILBECK ROAD)
IC RAILROAD
SECTION 00-01199-00-BR
MASSAC COUNTY
STRUCTURE NO. 064-3141