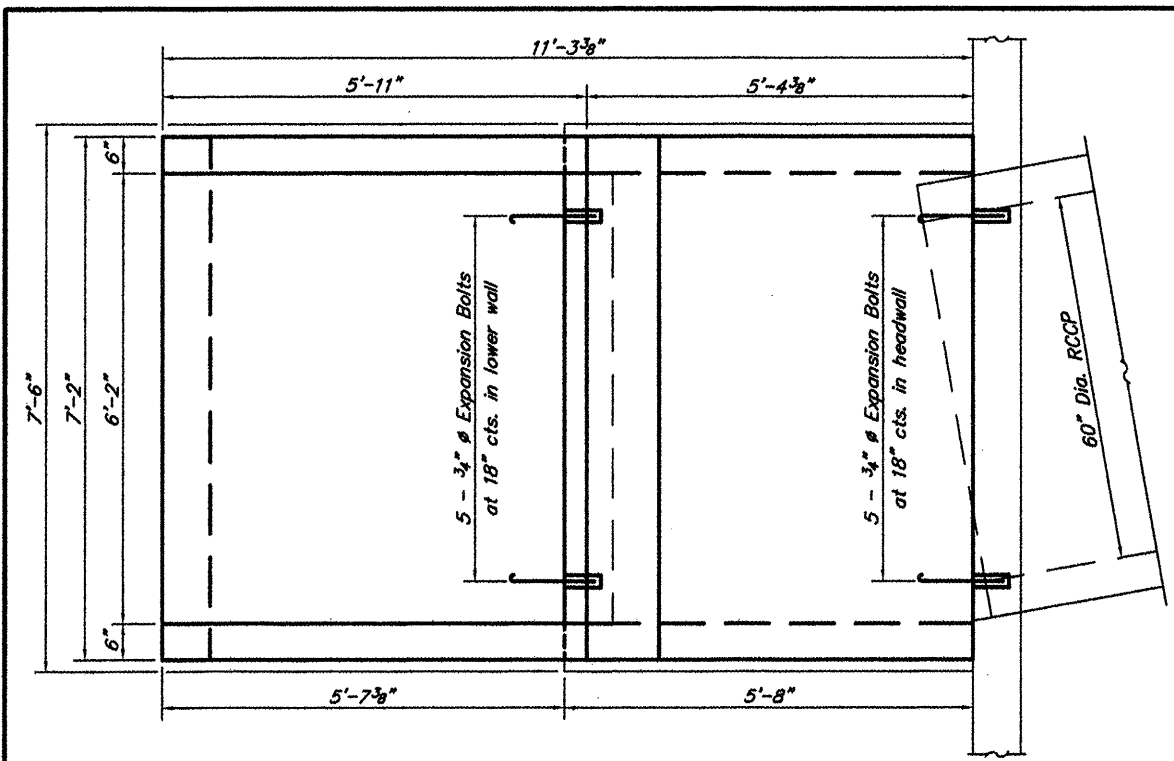


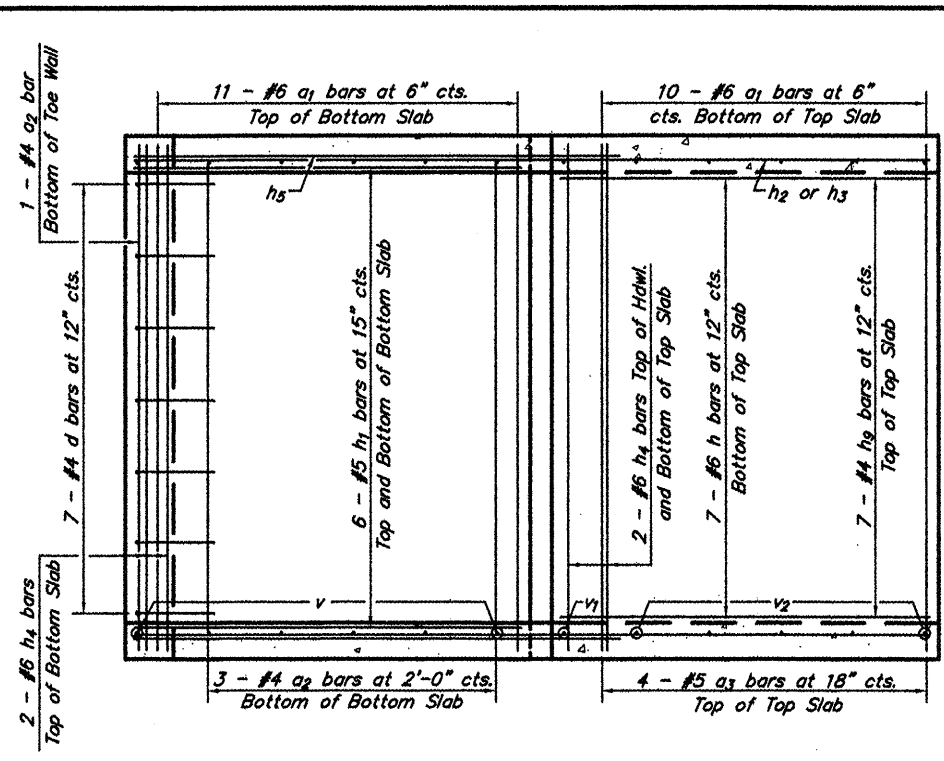
ROUTE	SECTION	COUNTY	TOTAL SHEETS	SHEET NO.
TR 93	00-01199-00-BR	MASSAC	18	16
PROJECT NO. BROS-127(18)		CONTRACT NO. 99438		

Note: Tilt hook of a_1 bars as necessary to provide specified clearance.

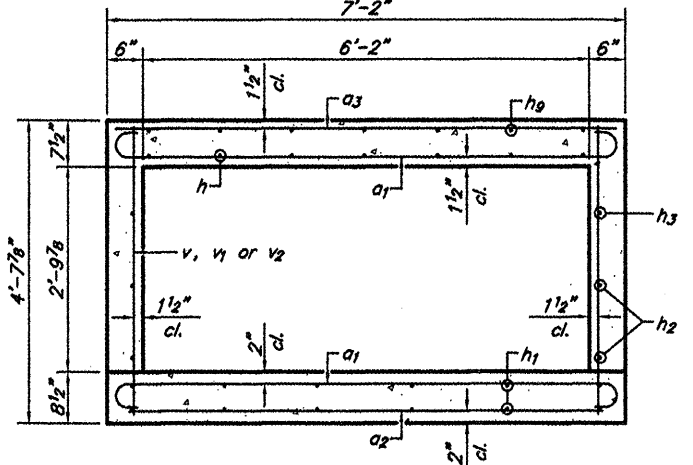


SHOWING OUTLINE

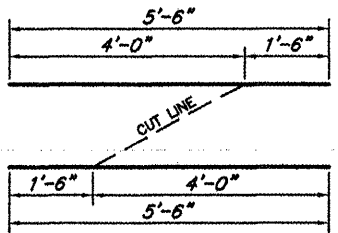
PLAN



SHOWING REINFORCEMENT



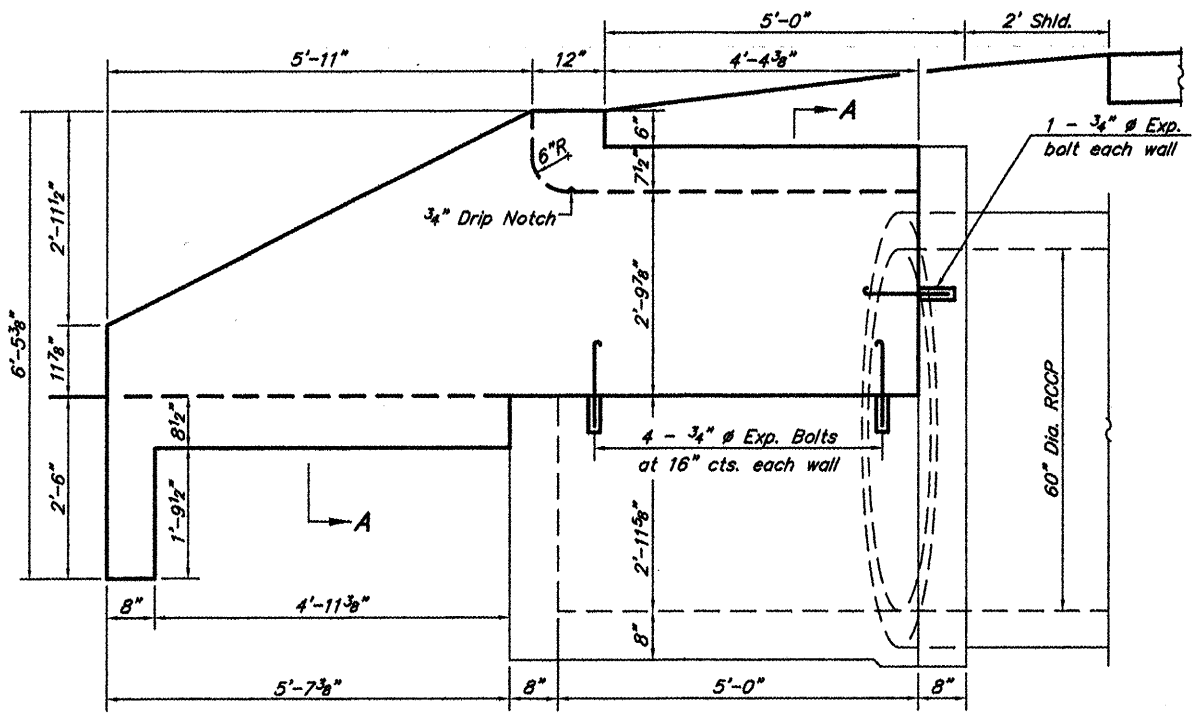
SECTION A-A



Bar v

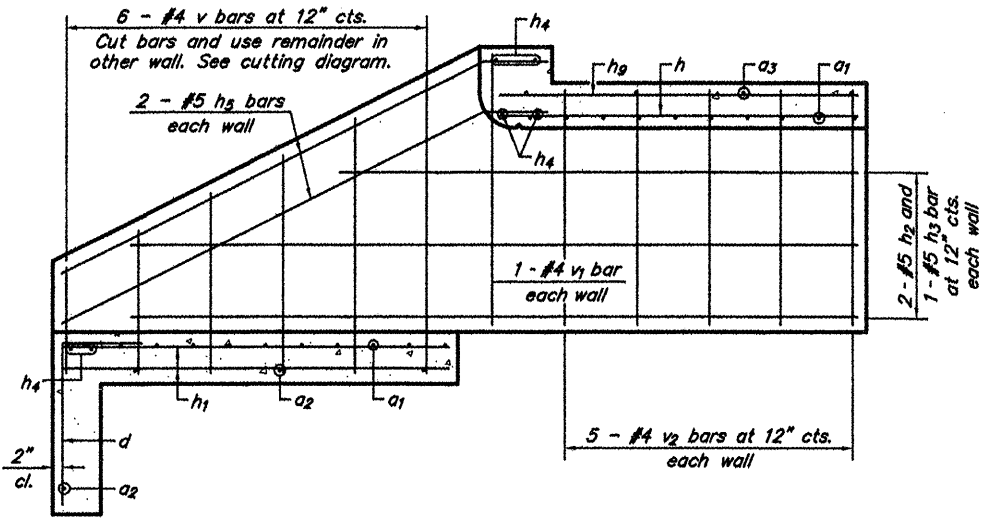
BILL OF MATERIAL

Bar	No.	Size	Length	Shape
a_1	21	#6	8'-2"	—
a_2	4	#4	6'-5"	—
a_3	4	#5	6'-10"	—
d	7	#4	3'-5"	└
h	7	#6	5'-0"	—
h_1	12	#5	5'-3"	—
h_2	4	#5	10'-0"	—
h_3	2	#5	7'-0"	—
h_4	6	#6	6'-10"	—
h_5	4	#5	7'-4"	—
h_9	7	#4	5'-0"	—
v	6	#4	5'-6"	—
v_1	2	#4	3'-8"	—
v_2	10	#4	3'-2"	—
Concrete Structures			3.5	Cu. Yds.
Reinforcement Bars			657	Lbs.
Expansion Bolts 3/4 Inch			20	Each

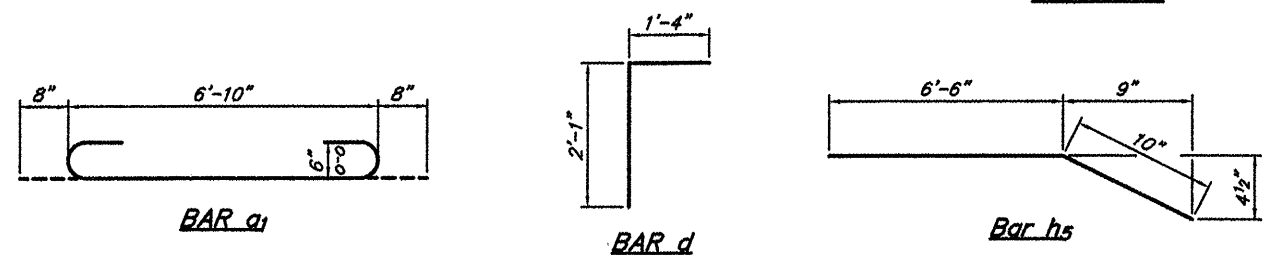


SHOWING OUTLINE

ELEVATION



SHOWING REINFORCEMENT



DESIGN STRESSES

$f'_c = 3,500$ psi
 $f_y = 60,000$ psi

NOTES

Exposed edges shall be beveled 3/4".
All construction joints shall be bonded.
Reinforcement bars shall conform to the requirements of AASHTO M-31 or M-322, Grade 60.
Expansion bolts shall consist of self drilling expansion shields and 3/4" ϕ x 12" hooked bolts. Bolts shall extend a minimum of 9" into new concrete and have a certified proof load of 4,080 lbs.

DROP INLET HEADWALL
STATION 10+28 LEFT
TOWNSHIP ROUTE 93 (SEILBECK ROAD)
CN RAILROAD
SECTION 00-01199-00-BR
MASSAC COUNTY