

ROAD CLASSIFICATION: MAJOR COLLECTOR
 DESIGN SPEED: 50 M.P.H.

ADT:
 (2012) = 550
 (2022) = 640
 PC = 563
 SU = 45
 MU = 32
 DHV 20 = 64

JOINT UTILITY LOCATING INFORMATION
 FOR EXCAVATIONS (J.U.L.I.E.)
 PHONE 1-800-892-0123

STATE OF ILLINOIS
 DEPARTMENT OF TRANSPORTATION
 DIVISION OF HIGHWAYS

PLANS FOR PROPOSED ROADWAY IMPROVEMENTS
 FEDERAL AID STR. & TARP PROJECT
 FAS 868 & C.H. 17
 Franklin County, Illinois
 Section 07-00167-00-RS
 Project RS-868(123)
 JOB C-99-531-08

RTE.	SECTION	COUNTY	TOTAL SHEETS	SHEET NO.
FAS 868	07-00167-00-RS	FRANKLIN	10	1

SHEET NO.	TITLE
1	COVER SHEET AND SUMMARY OF QUANTITIES
2	TYPICAL SECTIONS AND MISCELLANEOUS DETAILS
3-5	MISCELLANEOUS DETAILS
6-10	PLAN

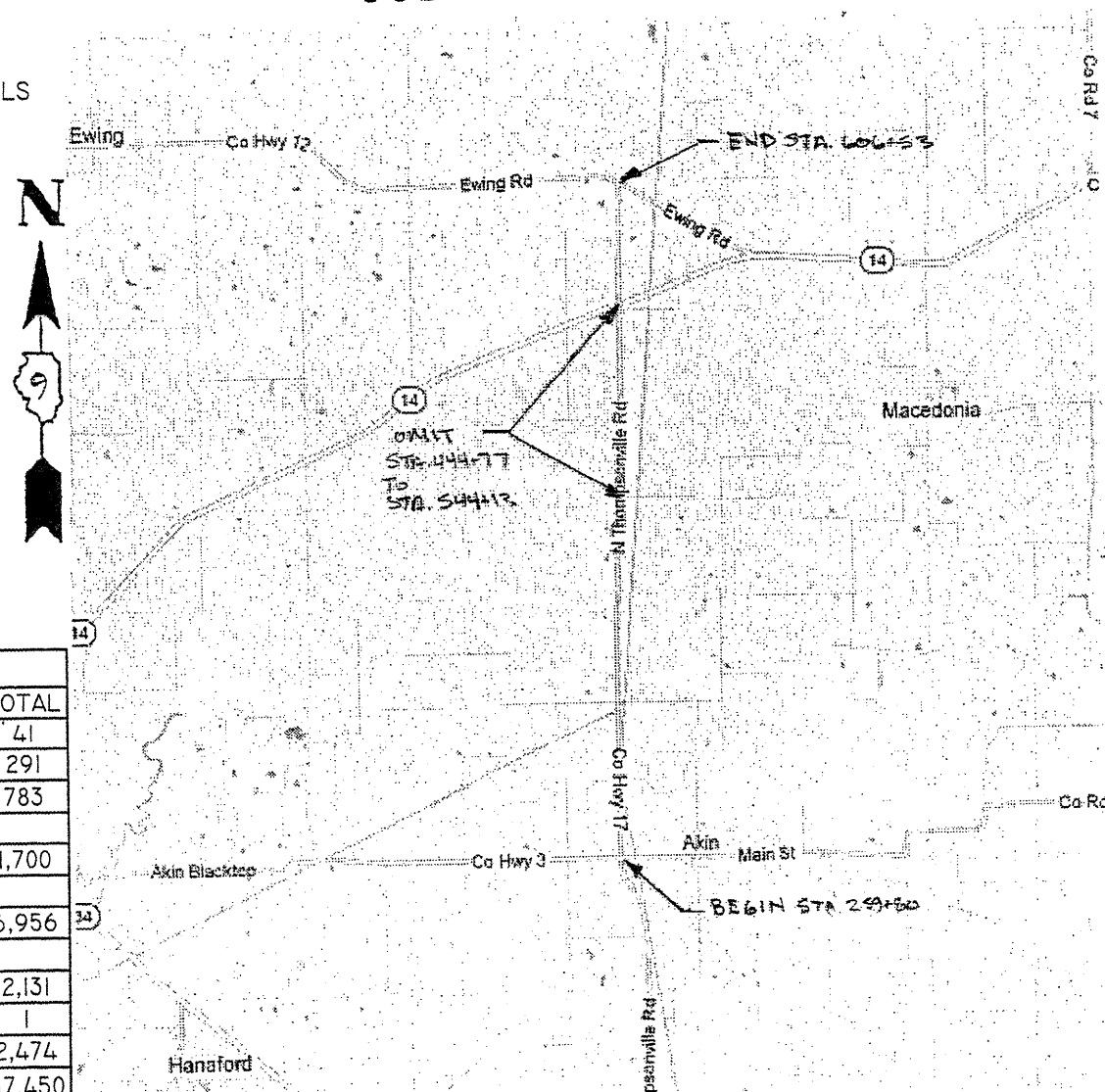
STANDARDS

- 701006-03
- 701201-04
- 701301-04
- 701306-03
- 701311-03
- 701901-02
- 780001-03
- BLR 24-2

SUMMARY OF QUANTITIES			
CODE NO.	PAY ITEM	UNIT	TOTAL
40200800	AGGREGATE SURFACE COURSE, TYPE B	TON	41
40600100	BITUMINOUS MATERIALS (PRIME COAT)	GALLON	291
40600982	HOT-MIX ASPHALT SURFACE REMOVAL	SQ YD	783
	-BUTT JOINT		
40603085	HOT-MIX ASPHALT BINDER COURSE, IL 19.0, N70	TON	1,700
40603315	HOT-MIX ASPHALT SURFACE COURSE, MIX "C", N70	TON	6,956
48100100	AGGREGATE SHOULDERS, TYPE A	TON	2,131
67100100	MOBILIZATION	L SUM	1
70300100	SHORT-TERM PAVEMENT MARKING	FOOT	2,474
Δ78001110	PAINT PAVEMENT MARKING - LINE 4"	FOOT	67,450
*X4401198	HOT-MIX ASPHALT SURFACE REMOVAL	SQ YD	1,596
	-VARIABLE DEPTH		

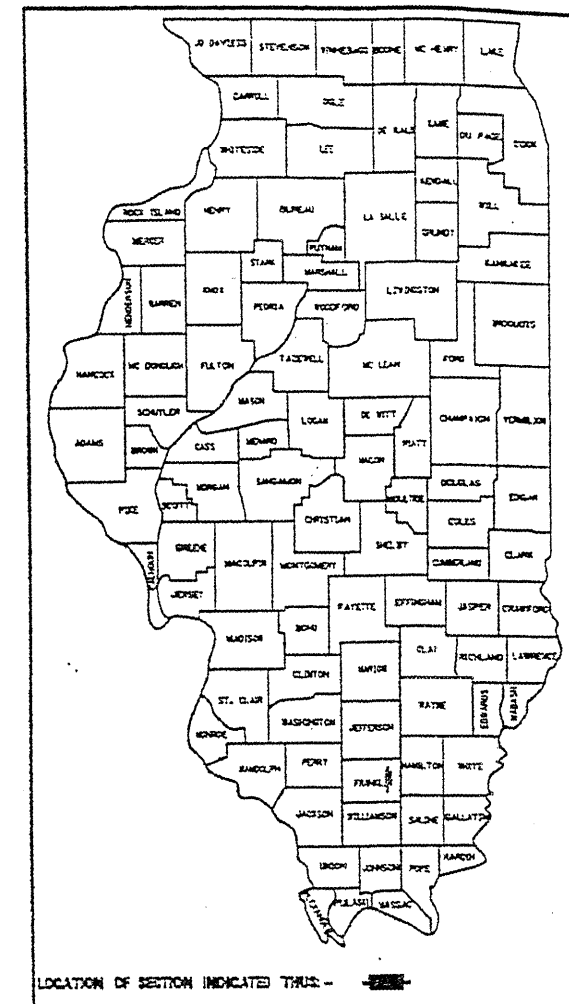
Δ SPECIALTY ITEMS

CONTRACT NO. 99473



LOCATION MAP

NET LENGTH = 4.685 MILES (24,737 FEET)

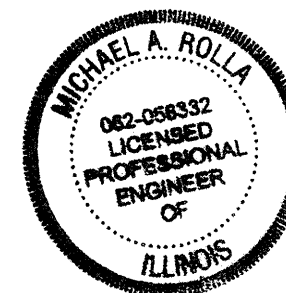


STATE OF ILLINOIS
 DEPARTMENT OF TRANSPORTATION

APPROVED 3/30/2012
Richard A. Rolla
 FRANKLIN COUNTY HIGHWAY ENGINEER

PASSED 4/4/2012
Der W. Hill
 DISTRICT 9 ENGINEER OF LOCAL ROADS & STREETS

RELEASING FOR BID
 BASED ON LIMITED REVIEW
Omni Design LLC
 DEPUTY DIRECTOR OF HIGHWAYS, REGION 5 ENGINEER



Richard A. Rolla
 MICHAEL A. ROLLA
 ILLINOIS REGISTERED PROFESSIONAL ENGINEER
 #062-056332
 LIC. EXPIRES NOVEMBER 30, 2013