

UTILITY NOTE

THE LOCATION, SIZE, AND TYPE OF MATERIAL OF EXISTING UNDERGROUND AND/OR ABOVEGROUND UTILITIES INDICATED ON THE PLANS ARE NOT REPRESENTED AS BEING ACCURATE, SUFFICIENT OR COMPLETE. NEITHER THE OWNER NOR THE ENGINEER ASSUMES ANY RESPONSIBILITY WHATEVER IN RESPECT TO THE ACCURACY, COMPLETENESS, OR SUFFICIENCY OF THE INFORMATION. THERE IS NO GUARANTEE, EITHER EXPRESSED OR IMPLIED, THAT THE LOCATIONS, SIZE AND TYPE OF MATERIAL OF EXISTING UNDERGROUND UTILITIES INDICATED ARE REPRESENTATIVE OF THOSE TO BE ENCOUNTERED IN THE CONSTRUCTION. IT SHALL BE THE CONTRACTOR'S RESPONSIBILITY TO DETERMINE THE ACTUAL LOCATION OF ALL SUCH FACILITIES, INCLUDING SERVICE CONNECTIONS TO UNDERGROUND UTILITIES. PRIOR TO CONSTRUCTION, THE CONTRACTOR SHALL NOTIFY THE UTILITY COMPANIES OF HIS OPERATIONAL PLANS AND SHALL OBTAIN FROM THE RESPECTIVE UTILITY COMPANIES DETAILED INFORMATION AND ASSISTANCE RELATIVE TO THE LOCATION OF THEIR FACILITIES AND THE WORKING SCHEDULE OF THE COMPANIES FOR REMOVAL OR ADJUSTMENT WHERE REQUIRED. IN THE EVENT AN UNEXPECTED UTILITY INTERFERENCE IS ENCOUNTERED DURING CONSTRUCTION, THE CONTRACTOR SHALL IMMEDIATELY NOTIFY THE UTILITY COMPANY OF JURISDICTION. THE OWNER'S REPRESENTATIVE AND/OR THE RESIDENT ENGINEER SHALL ALSO BE IMMEDIATELY NOTIFIED. ANY DAMAGE TO SUCH MAINS AND SERVICES SHALL BE RESTORED TO SERVICE AT ONCE AND PAID FOR BY THE CONTRACTOR AT NO ADDITIONAL COST TO THE CONTRACT. ALL UTILITY CABLES AND LINES SHALL BE LOCATED BY THE RESPECTIVE UTILITY. **CONTACT JULIE (JOINT UTILITY LOCATION INFORMATION FOR EXCAVATORS) FOR UTILITY INFORMATION, PHONE: 1-800-892-0123.** CONTACT THE FAA (FEDERAL AVIATION ADMINISTRATION) FOR ASSISTANCE IN LOCATING FAA CABLES AND UTILITIES. LOCATION OF FAA POWER, CONTROL, AND COMMUNICATION CABLES SHALL BE COORDINATED WITH AND/OR LOCATED BY THE FAA. ALSO CONTACT AIRPORT DIRECTOR/MANAGER AND AIRPORT PERSONNEL FOR ASSISTANCE IN LOCATING UNDERGROUND AIRPORT CABLES AND/OR UTILITIES. ALSO COORDINATE WORK WITH ALL ABOVEGROUND UTILITIES.

HAUL ROUTE AND VEHICLE PARKING

THE HAUL ROUTE AND EQUIPMENT PARKING WILL BE AS SHOWN ON THIS SHEET. SEE SHEET 4 FOR DETAILS.

CONTRACTOR RESPONSIBILITIES

THE CONTRACTOR'S EQUIPMENT PARKING AND STORAGE AREA WILL BE AS SHOWN ON THIS SHEET AND SHEET 4. THE CONTRACTOR'S EMPLOYEES WILL PARK THEIR VEHICLES IN THE PROPOSED EMPLOYEE PARKING AREA AS SHOWN ON THIS SHEET. ONLY CONTRACTOR VEHICLES WILL BE ALLOWED OUTSIDE THIS AREA.

THE CONTRACTOR AND HIS EMPLOYEES WILL BE RESTRICTED TO THE WORK AREA AND ALL OTHER AREAS OF THE AIRPORT ARE "OFF LIMITS" TO THEM.

THE CONTRACTOR WILL FURNISH ALL HIS EMPLOYEES WITH SOME TYPE OF TAG OR GARMENT TO IDENTIFY THEM AS BEING PART OF THE CONSTRUCTION CREW.

WHEN THE CONTRACTOR'S VEHICLES ARE ON THE AIRPORT SITE THEY SHALL BE PROPERLY MARKED. THE MARKING SHALL CONSIST OF A THREE (3) FOOT SQUARE FLAG CONSISTING OF A CHECKERED PATTERN OF INTERNATIONAL ORANGE AND WHITE SQUARES OF NOT LESS THAN (1) FOOT ON EACH SIDE DISPLAYED IN FULL ABOVE WORK VEHICLE.

BARRICADES AND TRAFFIC CONES

IT WILL BE THE CONTRACTOR'S RESPONSIBILITY TO PLACE AND MAINTAIN BARRICADES AND BARRIERS AS SHOWN ON SHEET 4 AND AS DIRECTED BY THE RESIDENT ENGINEER. THE BARRICADES WILL BE IDOT TYPE 1, EQUIPPED WITH RED FLASHING OR RED STEADY-BURN LIGHTS AND 20" SQUARE ORANGE FLAGS.

HEIGHT OF CONSTRUCTION EQUIPMENT

THE MAXIMUM ANTICIPATED HEIGHT OF THE CONSTRUCTION EQUIPMENT WILL BE 25 FEET. THE TALLEST EQUIPMENT IS EXPECTED TO BE A SEMI-TRUCK WITH A TRAILER IN THE UP POSITION.

150-ENGINEER'S FIELD OFFICE NOTES

THE PROPOSED ENGINEER'S FIELD OFFICE WILL BE FURNISHED, MAINTAINED, AND REMOVED IN ACCORDANCE WITH ITEM AR150510 "ENGINEER'S FIELD OFFICE" AS STATED ON PAGE 49 OF THE STANDARD SPECIFICATIONS FOR CONSTRUCTION OF AIRPORTS NOV. 2, 2009.

THE LOCATION OF THE PROPOSED ENGINEER'S FIELD OFFICE WILL BE DETERMINED AT THE PRE-CONSTRUCTION MEETING.

THE ENGINEERING FIRM WILL MAKE PAYMENT FOR ALL LONG DISTANCE TELEPHONE CALLS IN EXCESS OF ONE HUNDRED DOLLARS (\$100.00) PER MONTH.

THE CONTRACTOR WILL FURNISH A WIRELESS PHONE TO THE RESIDENT ENGINEER FOR HIS EXCLUSIVE USE FOR THE DURATION OF THIS PROJECT. THE RESIDENT ENGINEER WILL USE THIS PHONE FOR PROJECT BUSINESS ONLY. THE CONTRACTOR WILL BE RESPONSIBLE FOR ALL CHARGES ASSOCIATED WITH THIS CELL PHONE.

THE PROPOSED ENGINEER'S FIELD OFFICE WILL BE PAID FOR UNDER ITEMS: AR150510 ENGINEER'S FIELD OFFICE _____ 1 L.S.

SCOPE OF WORK

AIRPORT SECURITY NOTE

AIRPORT SECURITY WILL BE MAINTAINED AT ALL TIMES. ONLY CONTRACTOR EMPLOYEES OR MATERIAL SUPPLIERS SHALL BE ALLOWED WITHIN THE PROJECT LIMITS. THE CONTRACTOR WILL CLOSE AND LOCK THE EXISTING GATE IN THE HAUL ROUTE AT THE END OF EACH WORKING DAY. THE GATES WILL BE SECURED USING DOUBLE LOCKS. THIS WILL ALLOW THE CONTRACTOR AND THE AIRPORT PERSONNEL TO USE THE GATE INDEPENDENT OF EACH OTHER.

CERTIFIED PAYROLLS

THE RESIDENT ENGINEER CANNOT FORWARD CONSTRUCTION REPORTS TO THE ILLINOIS DIVISION OF AERONAUTICS FOR PROCESSING UNTIL ALL CERTIFIED PAYROLLS FOR THE PERIOD HAVE BEEN RECEIVED.

MATERIAL CERTIFICATION

COMPLETED WORK CANNOT BE PLACED ON A CONSTRUCTION REPORT UNTIL ALL MATERIAL CERTIFICATIONS FOR THAT PAY ITEM HAVE BEEN RECEIVED, REVIEWED AND ACCEPTED BY THE RESIDENT ENGINEER.

BENCHMARK DATA

NO.	DESCRIPTION	ELEV.
1	BM #6 CHISELED SQUARE ON SOUTHEAST CORNER OF CONCRETE FOUNDATION OF TAXIWAY SIGN	676.13
2	CB-51 CHISELED SQUARE ON SOUTH SIDE OF CONCRETE LID OF DROP INLET, NORTH END OF GRASS MEDIAN	672.91
3	TP #41 USGS BRASS DISC STAMPED "AP STA A 1965, STA. 171+57, 111' RT. RUNWAY 18-36	676.19
4	CB-53 CHISELED SQUARE ON NORTHWEST CORNER OF CONCRETE LID OF DROP INLET IN APRON	676.22

DE073

J.U.L.I.E. INFORMATION

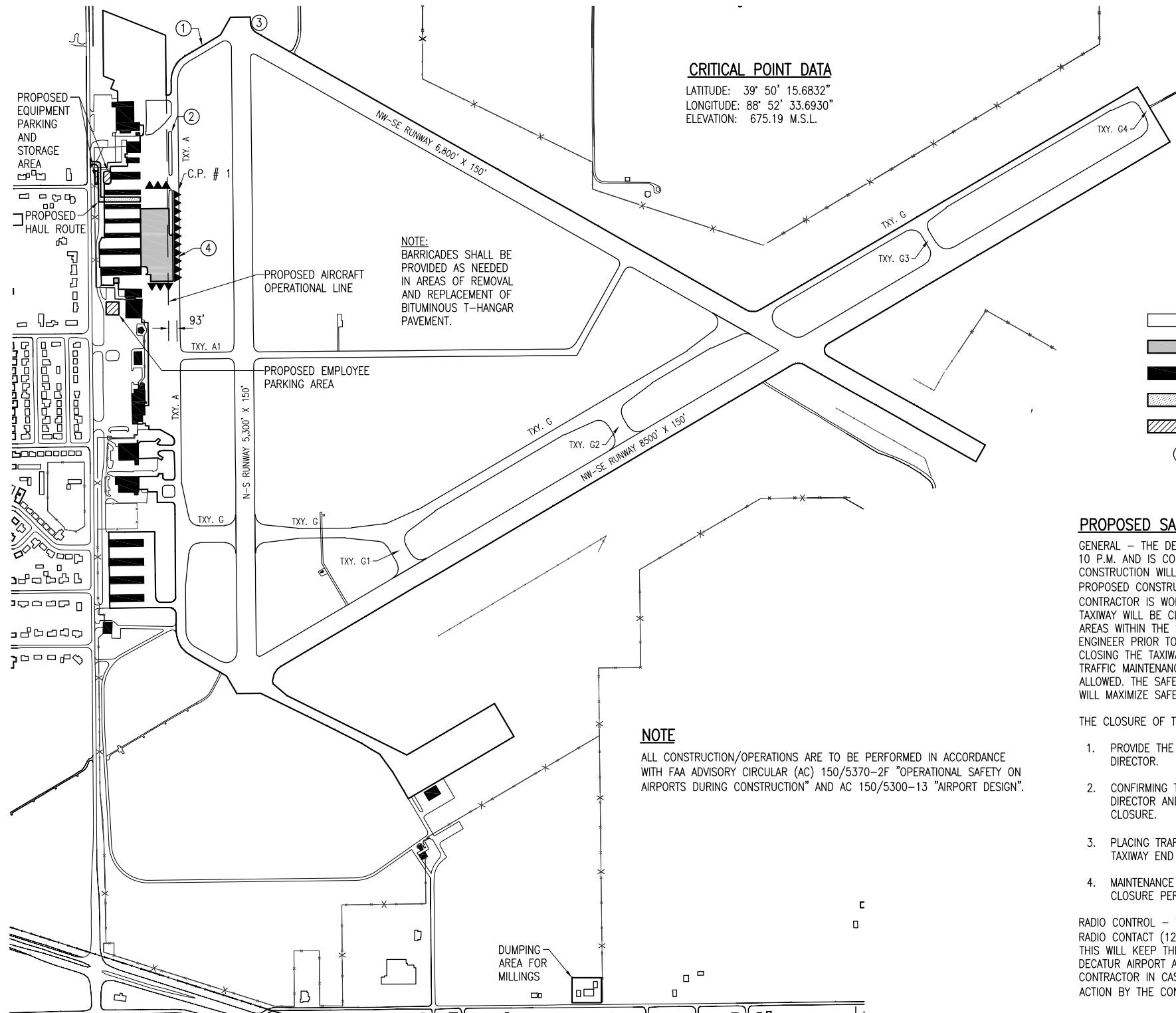
COUNTY _____ MACON
 CITY _____ DECATUR
 TOWNSHIP _____ LONG CREEK
 SECTION NO. _____ 20 & 21
 ADDRESS _____ DECATUR AIRPORT
 AIRPORT ROAD
 DECATUR, ILLINOIS 62524

EROSION CONTROL

THE PROPOSED CONSTRUCTION WILL NOT DISTURB MORE THAN 1 ACRE OF LAND. THEREFORE A N.P.D.E.S. PERMIT WILL NOT BE REQUIRED.

AIRCRAFT OPERATION LINE

THE CONTRACTOR WILL LOCATE THIS LINE AT THE START OF CONSTRUCTION AND WILL PLACE A FRANGIBLE MARKER (TRAFFIC CONE) EVERY 150' ALONG IT. THIS LINE WILL BE THE LIMITS THAT ALL CONTRACTOR PERSONNEL MAY VENTURE WHEN THE TAXIWAY IS NOT CLOSED.



CRITICAL POINT DATA

LATITUDE: 39° 50' 15.6832"
 LONGITUDE: 88° 52' 33.6930"
 ELEVATION: 675.19 M.S.L.

NOTE: BARRICADES SHALL BE PROVIDED AS NEEDED IN AREAS OF REMOVAL AND REPLACEMENT OF BITUMINOUS T-HANGAR PAVEMENT.

NOTE

ALL CONSTRUCTION/OPERATIONS ARE TO BE PERFORMED IN ACCORDANCE WITH FAA ADVISORY CIRCULAR (AC) 150/5370-2F "OPERATIONAL SAFETY ON AIRPORTS DURING CONSTRUCTION" AND AC 150/5300-13 "AIRPORT DESIGN".

LEGEND

- EXISTING IMPROVEMENTS
- PROPOSED IMPROVEMENTS
- EXISTING BUILDINGS
- PROPOSED HAUL ROUTE
- PROPOSED EQUIPMENT AND EMPLOYEE PARKING
- PROPOSED BENCHMARK
- PROPOSED BARRICADES OR TRAFFIC CONES

PROPOSED SAFETY PLAN

GENERAL - THE DECATUR AIRPORT IS TOWER CONTROLLED FROM 6 A.M. TO 10 P.M. AND IS COMPRISED OF THREE RUNWAYS. THE PROPOSED CONSTRUCTION WILL NOT NECESSITATE CLOSING ANY RUNWAYS. THE PROPOSED CONSTRUCTION WILL EFFECT TAXIWAY "A". ANY TIME THE CONTRACTOR IS WORKING WITHIN 93' OF THE TAXIWAY CENTERLINE, THE TAXIWAY WILL BE CLOSED. THE CONTRACTOR WILL SMOOTH GRADE ALL AREAS WITHIN THE SAFETY AREA TO THE SATISFACTION OF THE RESIDENT ENGINEER PRIOR TO REOPENING THE TAXIWAY. ALL WORK IN OPENING AND CLOSING THE TAXIWAY WILL BE CONSIDERED INCIDENTAL TO THE AR150530 TRAFFIC MAINTENANCE PAY ITEM AND NO ADDITIONAL COMPENSATION WILL BE ALLOWED. THE SAFETY PLAN OUTLINED HERE AND IN THE SPECIAL PROVISION WILL MAXIMIZE SAFETY AND ALLOW MINIMUM TAXIWAY CLOSURE.

THE CLOSURE OF THE TAXIWAY WILL REQUIRE THE FOLLOWING:

1. PROVIDE THE SPECIFIED ADVANCE NOTIFICATION TO THE AIRPORT DIRECTOR.
2. CONFIRMING THE ISSUANCE OF THE NOTAM WITH THE AIRPORT DIRECTOR AND CONTROL TOWER PRIOR TO STARTING THE ACTUAL CLOSURE.
3. PLACING TRAFFIC CONES AND BARRICADES (SEE NOTE BELOW) AT THE TAXIWAY END OR AS DIRECTED BY THE RESIDENT ENGINEER.
4. MAINTENANCE OF THE TRAFFIC CONES AND BARRICADES DURING THE CLOSURE PERIOD.

RADIO CONTROL - THE CONTRACTOR WILL BE REQUIRED TO BE IN TWO-WAY RADIO CONTACT (121.75 MHz.) WITH THE AIRPORT ATCT GROUND CONTROL. THIS WILL KEEP THE CONTRACTOR IN CONSTANT CONTACT WITH THE DECATUR AIRPORT AND ENABLE THE AIRPORT TO IMMEDIATELY CONTACT THE CONTRACTOR IN CASE OF AN AERONAUTIC EMERGENCY THAT WOULD REQUIRE ACTION BY THE CONTRACTOR AND/OR HIS PERSONNEL.

REVISION	DATE

DECATUR AIRPORT
 DECATUR, ILLINOIS
 I.L. PROJ.: DEC-4102 A.I.P. PROJ.: 3-17-0033-B3

Hanson Proj. No. 10A01360_0001	JSL	03/21/11
Filename R-0035SY.DWG	BAK	03/21/11
Scale 1" = 500'	RAW	04/07/11
Date 05/11/12		

HANSON
 Hanson Professional Services Inc. 2012
 Hanson Professional Services Inc.
 1525 South Sixth Street
 Springfield, Illinois 62703-2886
 Ph: (217) 788-2450 Fax: (217) 788-2503
 www.hanson-inc.com
 Offices Nationwide

RECONSTRUCT NORTH GA RAMP
PROPOSED SAFETY PLAN
3
 3 of 10 sheets