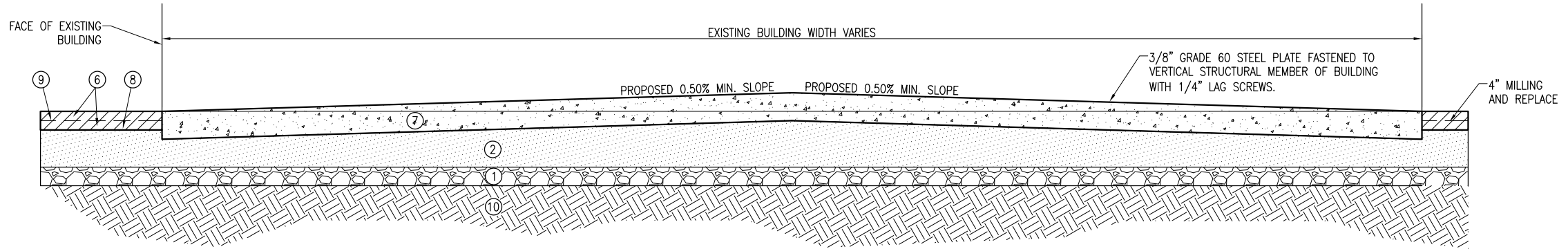


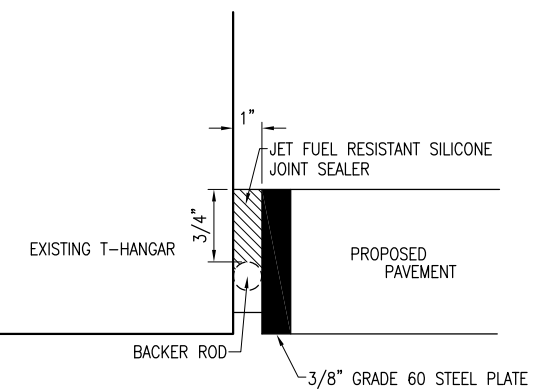
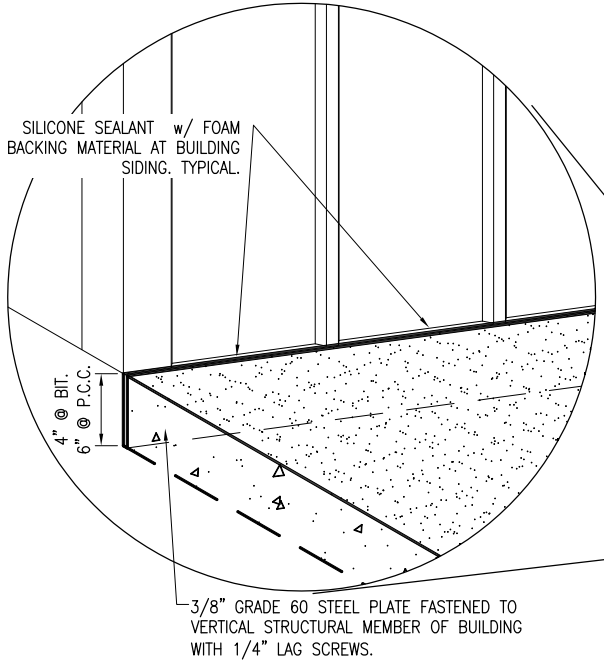
**PROPOSED BITUMINOUS CRICKET 4" THICKNESS**  
"NOT TO SCALE"



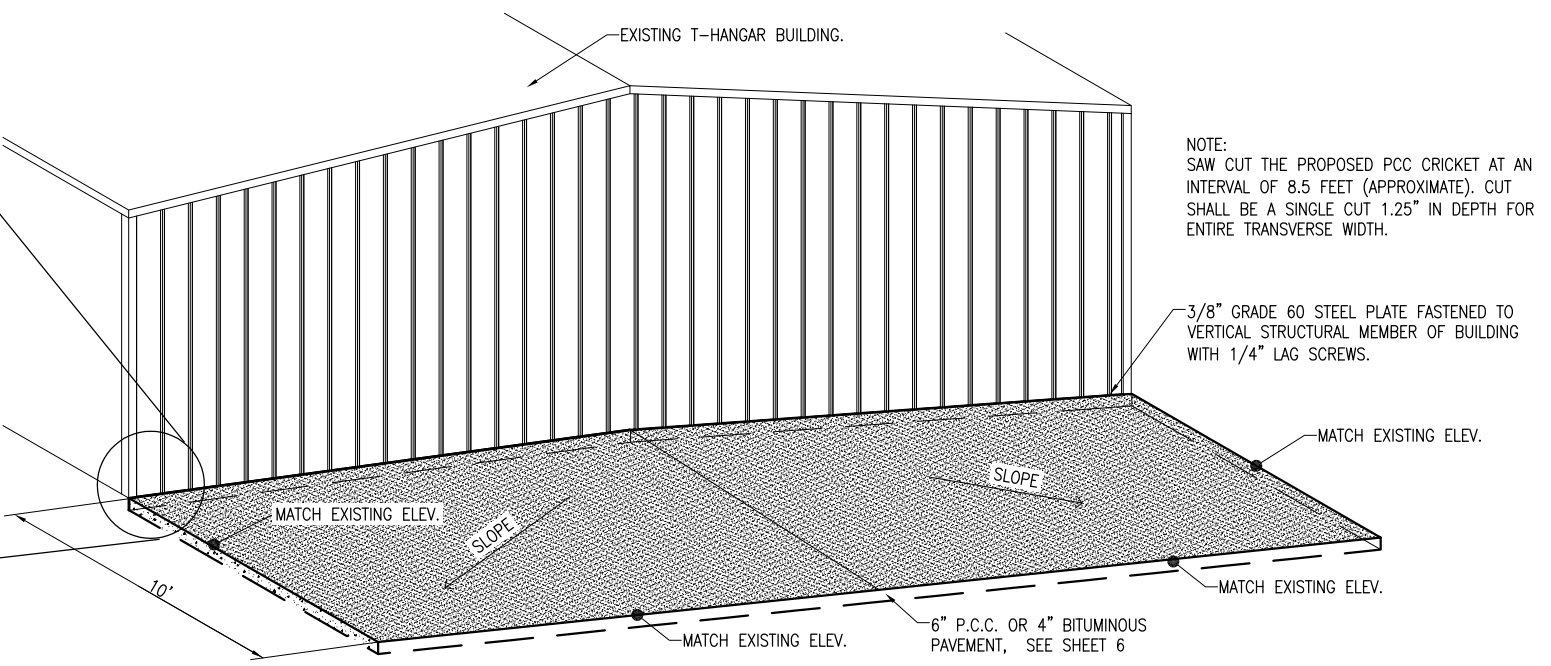
**PROPOSED CONCRETE CRICKET 6" THICKNESS**  
"NOT TO SCALE"

**LEGEND FOR TYPICAL SECTIONS**

- ① EXISTING AR208 AGGREGATE BASE COURSE - 6"
- ② EXISTING AR401 BITUMINOUS - (VARIABLE)
- ③ NOT USED ON THIS SHEET
- ④ NOT USED ON THIS SHEET
- ⑤ NOT USED ON THIS SHEET
- ⑥ PROPOSED AR401 BITUMINOUS SURFACE COURSE - 2"
- ⑦ PROPOSED AR610 6" P.C.C.
- ⑧ PROPOSED AR603 BITUMINOUS TACK COAT (0.25 GAL./S.Y.)
- ⑨ PROPOSED AR603 BITUMINOUS TACK COAT (0.10 GAL./S.Y.)
- ⑩ EXISTING SUBGRADE



**CRICKET EXPANSION JOINT DETAIL**  
"NOT TO SCALE"



**PROPOSED BITUMINOUS / PCC CRICKET**  
"NOT TO SCALE"

NOTE:  
SAW CUT THE PROPOSED PCC CRICKET AT AN INTERVAL OF 8.5 FEET (APPROXIMATE). CUT SHALL BE A SINGLE CUT 1.25" IN DEPTH FOR ENTIRE TRANSVERSE WIDTH.

REVISION	
DATE	

**DECATUR AIRPORT**  
DECATUR, ILLINOIS  
A.I.P. PROJ.: 3-17-0033-B3  
IL PROJ.: DEC-4102

Hanson Proj. No. 10A01360_0001	JSL	04/13/11
Filename R-521TYP.DWG	CWS	04/13/11
Scale NOT TO SCALE	RAW	04/07/11
Date 05/11/12		
LAYOUT		
DRAWN		
REVIEWED		

**HANSON**  
Professional Services Inc. 2012  
Hanson Professional Services Inc.  
1525 South Sixth Street  
Springfield, Illinois 62703-2886  
Ph: (217) 788-2450 Fax: (217) 788-2503  
www.hanson-inc.com  
Offices Nationwide

**RECONSTRUCT NORTH GA RAMP**  
PROPOSED TYPICAL SECTIONS FOR CRICKETS

MAY 14, 2012 9:00 AM HARR01115  
C:\PWISE-WORK\DO\_NOT\_DELETE\DM527480\R-521TYP.DWG