

NOTE:
 CONTRACTOR SHALL PLACE NEW BITUMINOUS SURFACE COURSE A MAXIMUM OF 1/2" AND A MINIMUM OF 1/4" ABOVE THE EXISTING SURROUNDING PAVEMENT TO ALLOW FOR FUTURE CONSOLIDATION.

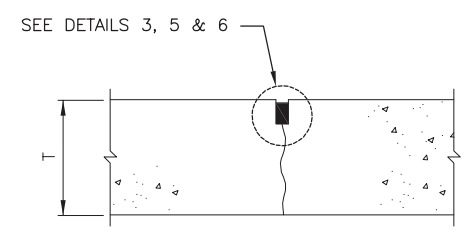
	DETAIL 1		DETAIL 2		DETAIL 3		DETAIL 4		DETAIL 5	
	HOT/COLD POUR	SILICONE	HOT/COLD POUR	SILICONE	HOT/COLD POUR	SILICONE	HOT/COLD POUR	SILICONE	HOT/COLD POUR	SILICONE
W=WIDTH OF SEALANT RESERVOIR (INCHES)	1	1	1/2	3/8	1/2	3/8	1/2	3/8	3/8	
D=DEPTH OF SEALANT RESERVOIR (INCHES)	1	1/2	1/2	1/4	1/2	1/4	1/2	1/4	N/A	
B=BACKER ROD DIAMETER (INCHES)	N/A	N/A	5/8	1/2	5/8	1/2	N/A	N/A	N/A	
S=SECOND SAWCUT DEPTH (INCHES) (MINIMUM)	N/A	N/A	1 3/8	1	1 3/8	1	3/4	1/2	1 1/2	

JOINT NOTES

- 1.) ALL EDGES OF NEW SLABS, FREE STANDING OR CLOSURE, SHALL BE EDGED WITH AN APPROVED TOOL HAVING A RADIUS OF 1/8" TO 1/4" TO FACILITATE SAWING OF THE SEALANT RESERVOIR. A RADIUS > 1/4" WILL NOT BE ACCEPTABLE.
- 2.) THE INITIAL SAWCUT FOR ALL LONGITUDINAL & TRANSVERSE CONTRACTION JOINTS SHALL BE SAWED AS SOON AS POSSIBLE AFTER PLACEMENT OF THE PAVEMENT.
- 3.) ALL TIE BARS & MESH SHALL BE SECURELY HELD IN PLACE BY SUPPORT PINS OR OTHER APPROVED METHODS TO PREVENT SHIFTING DURING & AFTER CONCRETE PLACEMENT.
- 4.) TIE BARS SHALL BE DEFORMED BARS IN CONFORMANCE WITH THE SPECIFICATIONS.
- 5.) THE INITIAL SAWCUT SHALL BE MADE TO THE 1/8" WIDTH INDICATED. INITIAL SAWING TO THE DIMENSIONS OF THE SECOND SAWCUT WILL NOT BE ALLOWED.

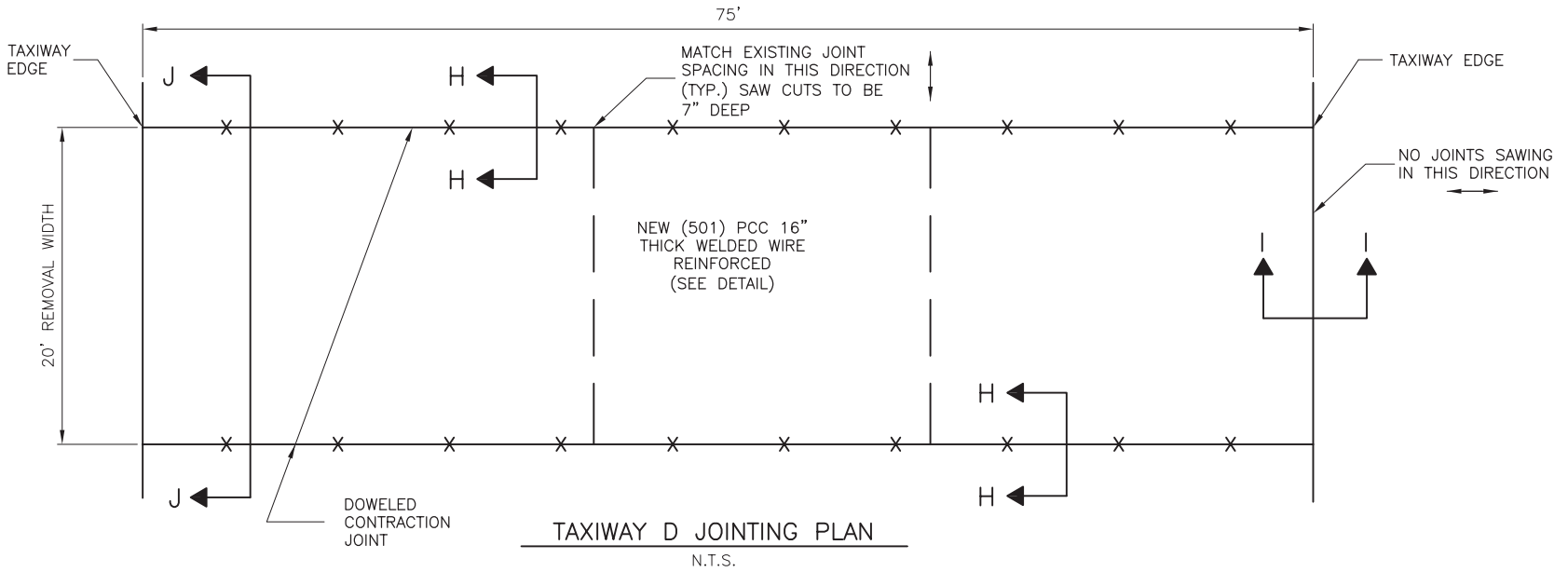
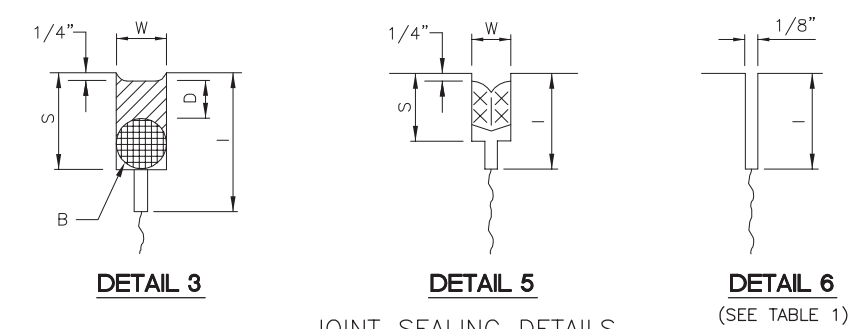
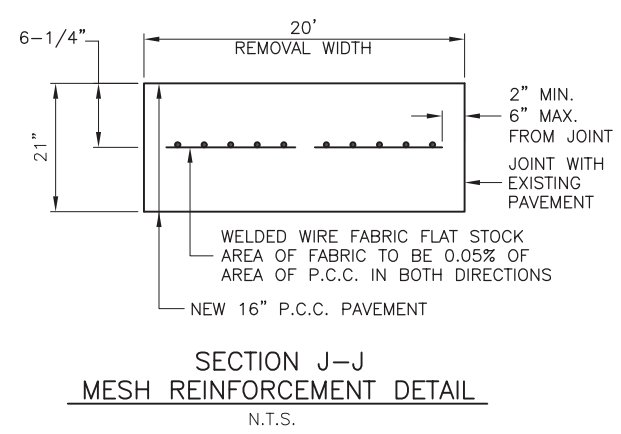
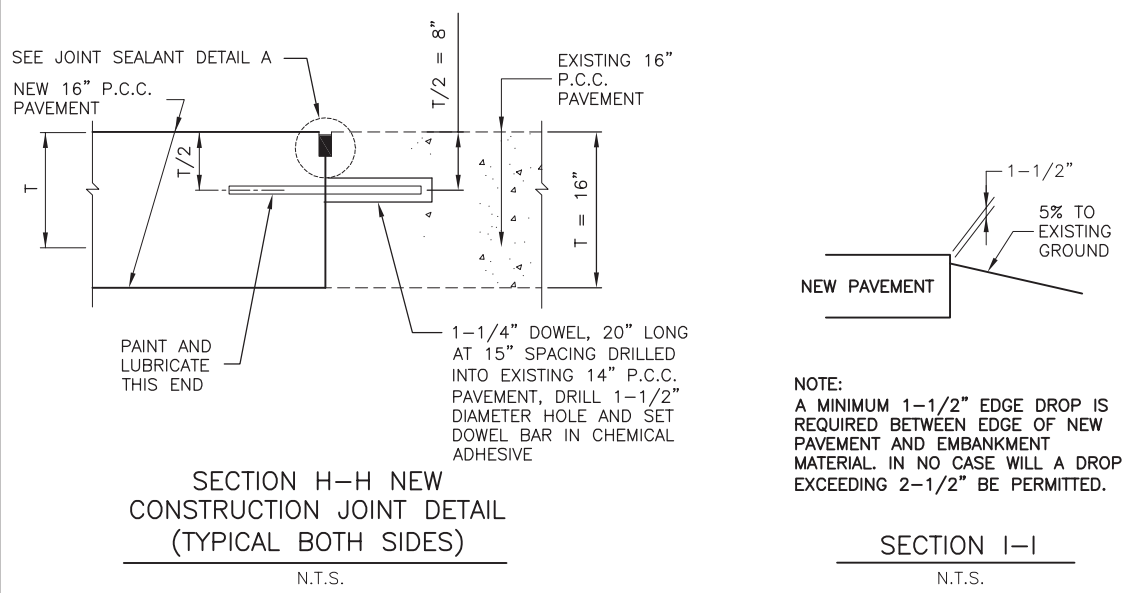
TABLE 1

PAVEMENT THICKNESS T - INCHES	DEPTH OF CONTRACTION JOINT INITIAL SAWCUT I, INCHES $I=(T/4) \pm 1/4"$
5	1.25"
6	1.50"
7	1.75"
8	2.00"
9	2.25"
10	2.50"
11	2.75"
12	3.00"
13	3.25"
14	3.50"
15	3.75"
16	4.00"
17	4.25"
18	4.50"



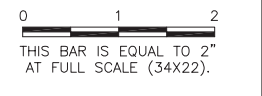
TYPE H DUMMY

SYMBOL -----



UN051

REVISIONS		
NUMBER	BY	DATE



WILLARD AIRPORT
UNIVERSITY OF ILLINOIS

NEW AIRFIELD LIGHTING VAULT
PAVING & MISCELLANEOUS DETAILS

© Copyright CMT, Inc.
CMT
CRAWFORD, MURPHY & TILLY, INC.
CONSULTING ENGINEERS
License No. 184-000613

DESIGN BY:	KLB
DRAWN BY:	CMT
CHECKED BY:	CBG
APPROVED BY:	CET
DATE:	APRIL 20, 2012
JOB No:	11059-03
IL PROJ. NO.	CMI-4100
AIP PROJ. NO.	3-17-0016-XX
SHEET	32 OF 60 SHEETS