

PE091

REVISIONS		
NUMBER	BY	DATE

0 1 2
 THIS BAR IS EQUAL TO 2"
 AT FULL SCALE (34X22).

WILLARD AIRPORT
UNIVERSITY OF ILLINOIS

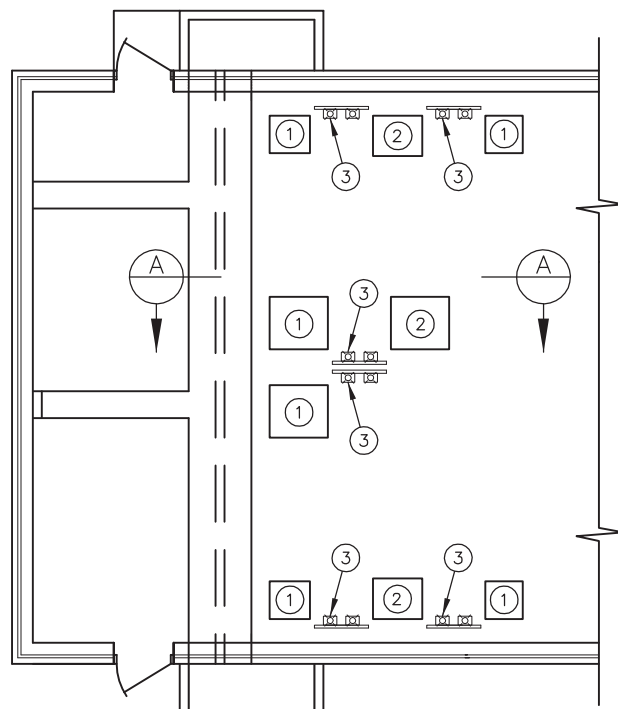
NEW AIRFIELD LIGHTING VAULT
NEW VAULT DETAILS 7

© Copyright CMT, Inc.

CMT
 CRAWFORD, MURPHY & TILLY, INC.
 CONSULTING ENGINEERS
 License No. 184-000613

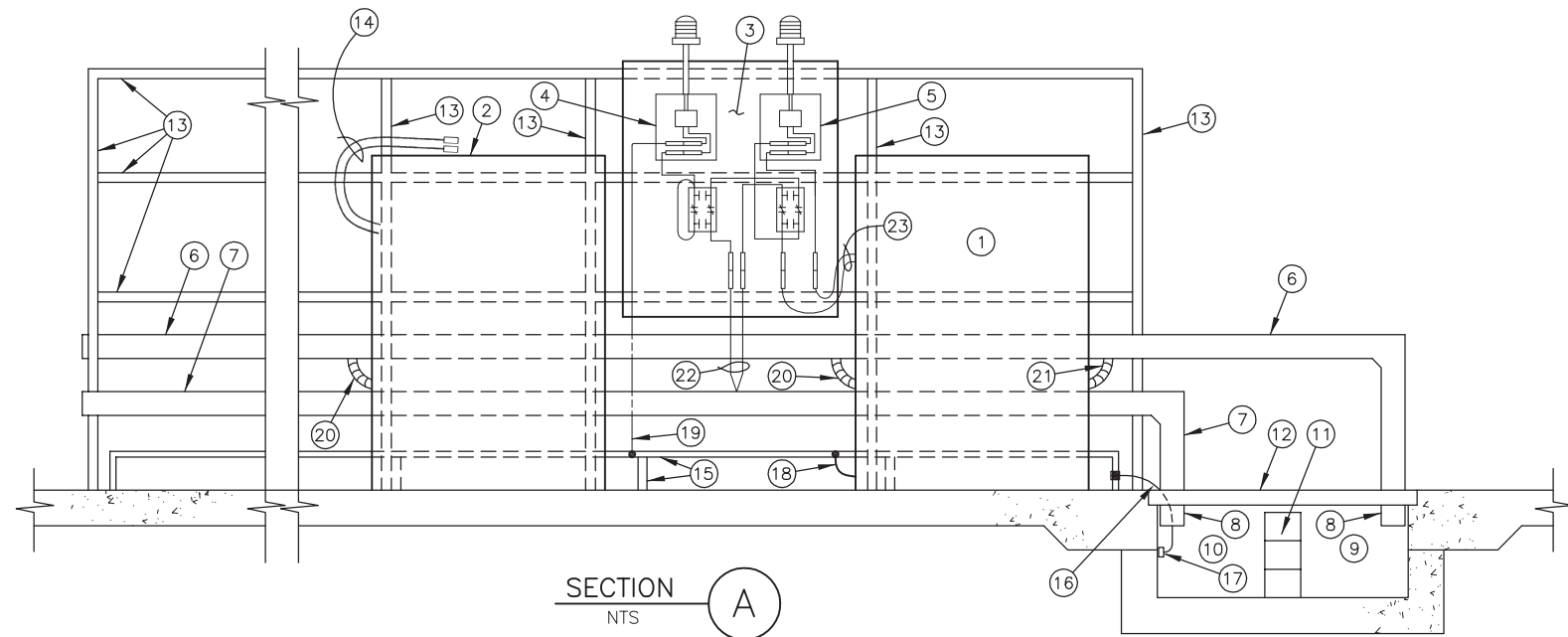


DESIGN BY:	WDP
DRAWN BY:	CMT
CHECKED BY:	JEH
APPROVED BY:	JEH
DATE:	APRIL 20, 2012
JOB No:	11059-03
IL PROJ. NO.	CMI-4100
AIP PROJ. NO.	3-17-0016-XX
SHEET	57 OF 60 SHEETS



PLAN NOMENCLATURE

- ① RUNWAY OR TAXIWAY REGULATOR.
- ② RELOCATED SPARE REGULATOR.
- ③ CIRCUIT INDICATING LIGHT & GROUND INDICATING LIGHT MOUNTING PANEL. SEE SECTION "A" FOR ADDITIONAL INFORMATION.



SECTION A
NTS

SECTION A NOMENCLATURE

- ① TAXIWAY B (SW) REGULATOR (CKT. T7), L-829, 20KW, 480V INPUT, 3-STEP 6.6A OUTPUT.
- ② RELOCATED "SPARE" REGULATOR #5, 20KW, 240V INPUT, 3-STEP 6.6A OUTPUT.
- ③ CIRCUIT INDICATING AND GROUND INDICATING ALUMINUM MOUNTING PANEL. MOUNT 6'-0" MAXIMUM FROM FLOOR TO TOP OF PANEL.
- ④ GROUND INDICATING LIGHT.
- ⑤ CIRCUIT INDICATING LIGHT.
- ⑥ 120V, 240V & 480V POWER AND CONTROL WIREWAY, 6"x6", NEMA 1. PROVIDE YELLOW LABEL READING: "CAUTION. 480V."
- ⑦ 5KV SERIES CIRCUIT HOMERUN WIREWAY, 6"x6", NEMA 1. PROVIDE YELLOW LABEL READING: "CAUTION. HIGH VOLTAGE."
- ⑧ ATTACH BOTTOM OF WIREWAY TO IN-FLOOR CABLE TRENCH SIDE WALL.
- ⑨ IN-FLOOR TRENCH FOR ALL WIRING 480V AND BELOW.
- ⑩ IN-FLOOR TRENCH FOR ALL SERIES CIRCUIT HOMERUN WIRING.
- ⑪ BRICK DIVIDING WALL.
- ⑫ REMOVABLE GRATING.
- ⑬ STRUT-TYPE FRAMING, UNISTRUT P-1000, OR EQUIVALENT.
- ⑭ 5KV, L-824, TYPE C SERIES CIRCUIT CABLE AND MALE AND FEMALE L-823 CONNECTORS. PROVIDE SUFFICIENT LENGTH TO REACH ALL REGULATORS (TXY B, TXY C & TXY A) ON EITHER SIDE OF SPARE REGULATOR.
- ⑮ VAULT GROUND BUS, 1/4" x 3/4" COPPER BUS BAR, INDEPENDENTLY SUPPORTED 6" MINIMUM ABOVE FLOOR. GROUND BUS SHALL NOT TOUCH STRUT-TYPE FRAMING OR REGULATORS.
- ⑯ #2 BARE COPPER WIRE IN 1/2" PVC CONDUIT. CLAMP TO GROUND BUS AT EACH END.
- ⑰ VAULT GROUND BUS, 1/4" x 3/4" COPPER BUS BAR, STAND-OFF MOUNTED INSIDE IN-FLOOR CABLE TRENCH.

NOTE: ALL VAULT GROUND BUS TO BE ELECTRICALLY BONDED TO CREATE ONE CONTINUOUS GROUND BUS.
- ⑱ #6 INSULATED GROUND WIRE CONNECTING REGULATOR TO VAULT GROUND BUS (TYPICAL ALL REGULATORS).
- ⑲ 5KV, L-824, TYPE C CABLE. CLAMP TO GROUND BUS.
- ⑳ 240V OR 480V POWER WIRING IN FLEXIBLE METAL CONDUIT.
- ㉑ L-890 SYSTEM REDUNDANT COMMUNICATION CABLES & UPS 120V POWER IN FLEXIBLE METAL CONDUIT.
- ㉒ 5KV, L-824, TYPE C CABLE. SERIES CIRCUIT HOMERUN. INSTALL GROMMETS WHERE CABLE ENTERS TOP OF WIREWAY.
- ㉓ 5KV, L-824, TYPE C CABLE. INSTALL GROMMETS WHERE CABLE ENTERS REGULATOR.