

INDEX OF SHEETS

SHEET NO.	DESCRIPTION
1	TITLE SHEET
2	INDEX OF SHEETS, HIGHWAY STANDARDS, AND GENERAL NOTES
3 - 5	SUMMARY OF QUANTITIES
6 - 7	TYPICAL SECTIONS
8 - 23	ROADWAY AND PAVEMENT MARKING PLANS
24 - 73	PROPOSED SIDEWALK RAMP DETAILS
73A - 73F	PROPOSED LANDSCAPING DETAILS
74 - 87	DETECTOR LOOP REPLACEMENT PLANS
87A - 87F	INDUCTION LOOP INFORMATION AND DETAILS
88	DETAILS FOR FRAMES AND LIDS ADJUSTMENT WITH MILLING (BD-08)
89	PAVEMENT PATCHING FOR HMA SURFACED PAVEMENT (BD-22)
90	CURB OR CURB AND GUTTER REMOVAL AND REPLACEMENT (BD-24)
91	BUTT JOINT AND HMA TAPER DETAILS (BD-32)
92	ENTRANCE AND EXIT RAMP DETAILS (TC-08)
93	TRAFFIC CONTROL AND PROTECTION FOR SIDE ROADS, INTERSECTIONS, AND DRIVEWAYS (TC-10)
94	TYPICAL APPLICATIONS RAISED REFLECTIVE PAVEMENT MARKERS (SNOW-PLOW RESISTANT) (TC-11)
95	DISTRICT ONE TYPICAL PAVEMENT MARKINGS (TC-13)
96	TRAFFIC CONTROL AND PROTECTION AT TURN BAYS (TO REMAIN OPEN TO TRAFFIC) (TC-14)
97	SHORT TERM PAVEMENT MARKING LETTERS AND SYMBOLS (TC-16)
98	ARTERIAL ROAD INFORMATION SIGN (TC-22)
98A - 98B	TYPICAL SUPPLEMENTAL SIGNING AND PAVEMENT MARKING TREATMENT FOR RAILROAD CROSSING (TC-23)
98C	DRIVEWAY ENTRANCE SIGNING (TC-26)
99	DISTRICT ONE STANDARD TRAFFIC SIGNAL DESIGN DETAIL, SHEET 2 OF 7 (TS-05)
100	DISTRICT ONE DETECTOR LOOP INSTALLATION DETAILS FOR ROADWAY RESURFACING (TS-07)

STATE HIGHWAY STANDARDS (CONTINUED...)

STANDARD NO.	DESCRIPTION
000001-06	STANDARD SYMBOLS, ABBREVIATIONS AND PATTERNS
442201-03	CLASS C AND D PATCHES
602301-04	INLET - TYPE A
604001-04	FRAMES AND LIDS TYPE 1
604091-03	FRAME AND GRATE TYPE 24
606001-07	CONCRETE CURB TYPE B AND COMBINATION CONCRETE CURB AND GUTTER
701101-05	OFF-RD OPERATIONS, MULTILANE, 15' (4.5 m) TO 24' (600 mm) FROM PAVEMENT EDGE
701106-02	OFF-RD OPERATIONS, MULTILANE, MORE THAN 15' (4.5 m) AWAY
701411-09	LANE CLOSURE, MULTILANE, AT ENTRANCE OR EXIT RAMP, FOR SPEEDS ≥ 45 MPH
701421-08	LANE CLOSURE, MULTILANE, DAY OPERATIONS ONLY, FOR SPEEDS ≥ 45 MPH TO 55 MPH
701426-09	LANE CLOSURE, MULTILANE, INTERMITTENT OR MOVING OPER., FOR SPEEDS ≥ 45 MPH
701427-05	LANE CLOSURE, MULTILANE, INTERMITTENT OR MOVING OPER., FOR SPEEDS ≤ 40 MPH
701601-09	URBAN LANE CLOSURE, MULTILANE, 1W OR 2W WITH NONTRAVERSABLE MEDIAN
701606-10	URBAN SINGLE LANE CLOSURE, MULTILANE, 2W WITH MOUNTABLE MEDIAN
701701-10	URBAN LANE CLOSURE, MULTILANE INTERSECTION
701801-06	SIDEWALK, CORNER OR CROSSWALK CLOSURE
701901-07	TRAFFIC CONTROL DEVICES
814001-03	HANDHOLES

GENERAL NOTES (CONTINUED..)

- IT SHALL BE THE CONTRACTOR'S RESPONSIBILITY TO VERIFY ALL DIMENSIONS AND CONDITIONS EXISTING IN THE FIELD PRIOR TO CONSTRUCTION AND ORDERING OF MATERIALS.
- DO NOT SCALE PLANS FOR CONSTRUCTION DIMENSIONS.
- THE CONTRACTOR SHALL BE REQUIRED TO PROVIDE ACCESS TO ABUTTING PROPERTY AT ALL TIMES DURING THE CONSTRUCTION OF THIS PROJECT.
- ALL PAVEMENT PATCHING LOCATIONS WILL BE DETERMINED IN THE FIELD BY THE ENGINEER.
- DRAINAGE ADJUSTMENT OR RECONSTRUCTION LOCATIONS WILL BE DETERMINED IN THE FIELD BY THE ENGINEER.
- FOR FRAMES AND LIDS ADJUSTMENT WITHOUT MILLING, REUSE EXISTING FRAME AND LID UNLESS OTHERWISE SPECIFIED IN THE PLANS.
- WHEN MILLED PAVEMENT IS OPEN TO TRAFFIC, THE MAXIMUM GRADE DIFFERENTIAL BETWEEN PASSES OF THE MILLING MACHINE SHALL NOT EXCEED 1½ INCHES WHERE THE SPEED LIMIT IS 45 MPH OR LESS, AND 1 INCH WHERE THE SPEED LIMIT IS OVER 45 MPH. WITH WRITTEN APPROVAL FROM THE ENGINEER, A MAXIMUM GRADE DIFFERENTIAL OF 3 INCHES MAY BE ALLOWED IF THE EDGE OF THE MILLING IS SLOPED A MINIMUM OF 1V:3H.
- BUTT JOINTS WILL BE INSTALLED AT THE ENDS OF RESURFACING (WHERE RESURFACING MEETS EXISTING PAVEMENT) IN ACCORDANCE WITH THE "BUTT JOINT AND HMA TAPER DETAILS" SHEET INCLUDED IN THE PLANS, UNLESS OTHERWISE SPECIFIED.
- THE ENGINEER SHALL CONTACT PATRICE HARRIS, AREA TRAFFIC FIELD TECHNICIAN VIA E-MAIL AT patrice.harris@illinois.gov, A MINIMUM OF 2 WEEKS PRIOR TO PLACEMENT OF PERMANENT PAVEMENT MARKINGS.
- BEFORE BEGINNING ANY WORK, THE CONTRACTOR SHALL RETAIN AND RECORD FOR FUTURE REFERENCE, ALL EXISTING PAVEMENT MARKING LINES (AND RAISED REFLECTIVE PAVEMENT MARKERS) IN ORDER THAT THESE LOCATIONS CAN BE RE-ESTABLISHED FOR STRIPING. EXACT LOCATIONS OF ALL PAVEMENT MARKINGS SHALL BE AS DIRECTED BY THE ENGINEER.
- ANY PAVEMENT MARKINGS AND RAISED REFLECTIVE PAVEMENT MARKERS OBLITERATED BY MILLING AND RESURFACING OPERATIONS ON SIDE STREETS AND ENTRANCES SHALL BE REPLACED AND PAID FOR IN KIND.
- PAVEMENT MARKING TAPE, TYPE III SHALL BE USED FOR SHORT TERM PAVEMENT MARKINGS ON ALL FINAL SURFACES.
- THE CONTRACTOR SHALL BE RESPONSIBLE FOR THE REPLACEMENT OF ANY DETECTOR LOOPS DAMAGED DURING CONSTRUCTION.
- THE CONTRACTOR SHALL MAINTAIN PEDESTRIAN ACCESS AT ALL TIMES DURING CONSTRUCTION.
- LOCATION OF COMBINATION CONCRETE CURB AND GUTTER REMOVAL AND REPLACEMENT (OR COMBINATION CURB AND GUTTER (THE TYPE SPECIFIED IN THE PLANS)) WILL BE DETERMINED IN THE FIELD BY THE ENGINEER.
- CONTACT THE IDOT ROADSIDE DEVELOPMENT UNIT AT 847-705-4171 AT LEAST 2 WEEKS PRIOR TO BEGINNING WORK FOR LAYOUT.
- BEFORE BEGINNING ANY WORK, THE CONTRACTOR SHALL RETAIN AND RECORD FOR FUTURE REFERENCE, ALL EXISTING PAVEMENT MARKING LINES (AND RAISED REFLECTIVE PAVEMENT MARKERS) IN ORDER THAT THESE LOCATIONS CAN BE RE-ESTABLISHED FOR STRIPING. EXACT LOCATIONS OF ALL PAVEMENT MARKINGS SHALL BE AS DIRECTED BY THE ENGINEER.
- WITH RAILROAD ENTRY PERMIT AND INSURANCE PROVIDED, EXISTING HMA ROADWAY SHALL BE MILLED AND RESURFACED TO THE EDGE OF THE RAILROAD PANEL.
- THE CONTRACTOR SHALL REQUEST AND GAIN APPROVAL FROM THE ILLINOIS DEPARTMENT OF TRANSPORTATION'S EXPRESSWAY TRAFFIC OPERATIONS ENGINEER AT www.idotics.com TWENTY-FOUR (24) HOURS IN ADVANCE OF ALL DAILY LANE, RAMP, AND SHOULDER CLOSURES. PLEASE REGISTER AN ACCOUNT AT www.idotics.com TO ENTER LANE CLOSURES.
- DELINEATORS SHALL BE INSTALLED ALONG THE RAMPS CONNECTING LA GRANGE ROAD AND I-55 PER HIGHWAY STANDARD 635001.

GENERAL NOTES

- BEFORE STARTING ANY EXCAVATION, THE CONTRACTOR SHALL CALL "JULIE" AT (800) 892-0123 OR 811 FOR FIELD LOCATIONS OF BURIED ELECTRIC, TELEPHONE, AND GAS FACILITIES. (48 HOUR NOTIFICATION REQUIRED)
- THE CONTRACTOR SHALL COORDINATE CONSTRUCTION ACTIVITIES WITH UTILITY COMPANIES, THE CITY OF COUNTRYSIDE, AND THE VILLAGES OF WILLOW SPRINGS, JUSTICE, HODGKINS, LAGRANGE, AND LAGRANGE PARK.
- FRAMES AND GRATES ADJUSTMENT OF PRIVATE UTILITIES WITHIN THE LIMITS OF THE IMPROVEMENTS SHALL BE DONE BY THEIR RESPECTIVE OWNERS AND ARE NOT PART OF THIS CONTRACT.
- THE CONTRACTOR SHALL CONTACT DISTRICT ONE ARTERIAL TRAFFIC CONTROL SUPERVISOR AT (847) 705-4470 A MINIMUM OF 72 HOURS IN ADVANCE OF BEGINNING WORK.
- THE CONTRACTOR WILL NOT BE ALLOWED TO SET UP A YARD OR FIELD OFFICE ON STATE PROPERTY WITHOUT THE WRITTEN PERMISSION OF THE DEPARTMENT.
- UNLESS OTHER CONDITIONS WARRANT EXTENDED LANE CLOSURE AS DETERMINED AND APPROVED IN WRITING BY THE ENGINEER OR AS PROVIDED FOR IN THE CONTRACT SPECIFICATIONS, OVERNIGHT CLOSURES SHALL NOT BE ALLOWED FOR REHABILITATION PROJECTS INVOLVING DAYTIME MILLING AND RESURFACING OPERATIONS AND CLASS D PATCHING.

STATE HIGHWAY STANDARDS

STANDARD NO.	DESCRIPTION
630001-12	STEEL PLATE BEAM GUARDRAIL
630301-08	SHOULDER WIDENING FOR TYPE 1 (SPECIAL) GUARDRAIL TERMINALS
635001-02	DELINEATORS
725001-01	OBJECT AND TERMINAL MARKERS
782006	GUARDRAIL AND BARRIER WALL REFLECTOR MOUNTING DETAILS

REV. 6-5-2018

URBAN

URBAN

SUMMARY OF QUANTITIES			TOTAL QUANTITIES	CONSTRUCTION TYPE CODE				
CODE NO	ITEM	UNIT		0005 80% FED 20% STATE				
20100210	TREE REMOVAL (OVER 15 UNITS DIAMETER)	UNIT	40	40				
20101350	TREE PRUNING (OVER 10 INCH DIAMETER)	EACH	2	2				
20200100	EARTH EXCAVATION	CU YD	270	270				
20200600	EXCAVATING AND GRADING EXISTING SHOULDER	UNIT	1	1				
21101615	TOPSOIL FURNISH AND PLACE, 4"	SO YD	1699	1699				
25000210	SEEDING, CLASS 2A	ACRE	0.04	0.04				
25000400	NITROGEN FERTILIZER NUTRIENT	POUND	22	22				
25000500	PHOSPHORUS FERTILIZER NUTRIENT	POUND	18	18				
25000600	POTASSIUM FERTILIZER NUTRIENT	POUND	22	22				
25003310	INTERSEEDING, CLASS 4	ACRE	2.75	2.75				
25100127	MULCH, METHOD 3A	ACRE	1.25	1.25				
25100630	EROSION CONTROL BLANKET	SO YD	177	177				
25200110	SODDING, SALT TOLERANT	SO YD	1677	1677				
25200200	SUPPLEMENTAL WATERING	UNIT	6	6				
35501308	HOT-MIX ASPHALT BASE COURSE, 6"	SQ YD	99	99				
40600290	BITUMINOUS MATERIALS (TACK COAT)	POUND	134476	134476				
40600400	MIXTURE FOR CRACKS, JOINTS, AND FLANGEWAYS	TON	598	598				
	* SPECIALTY ITEM							

SUMMARY OF QUANTITIES			TOTAL QUANTITIES	CONSTRUCTION TYPE CODE				
CODE NO	ITEM	UNIT		0005 80% FED 20% STATE				
40600827	POLYMERIZED LEVELING BINDER (MACHINE METHOD), 1L-4.75, N50	TON	8368	8368				
40603335	HOT-MIX ASPHALT SURFACE COURSE, MIX "D", N50	TON	12	12				
40600982	HOT-MIX ASPHALT SURFACE REMOVAL - BUTT JOINT	SO YD	1532	1532				
40603340	HOT-MIX ASPHALT SURFACE COURSE, MIX "D", N70	TON	1456	1456				
42001300	PROTECTIVE COAT	SO YD	4033	4033				
42300200	PORTLAND CEMENT CONCRETE DRIVEWAY PAVEMENT, 6 INCH	SQ YD	26	26				
42400200	PORTLAND CEMENT CONCRETE SIDEWALK 5 INCH	SO FT	27528	27528				
42300400	PORTLAND CEMENT CONCRETE DRIVEWAY PAVEMENT, 8 INCH	SQ YD	64	64				
42400800	DETECTABLE WARNINGS	SO FT	2398	2398				
44000158	HOT-MIX ASPHALT SURFACE REMOVAL, 2 1/4"	SQ YD	17327	17327				
44000600	SIDEWALK REMOVAL	SO FT	25881	25881				
44000159	HOT-MIX ASPHALT SURFACE REMOVAL, 2 1/2"	SQ YD	181897	181897				
44201803	CLASS D PATCHES, TYPE II, 13 INCH	SO YD	2940	2940				
44000200	DRIVEWAY PAVEMENT REMOVAL	SQ YD	189	189				
44201807	CLASS D PATCHES, TYPE III, 13 INCH	SO YD	2515	2515				
44201809	CLASS D PATCHES, TYPE IV, 13 INCH	SO YD	2940	2940				
48101498	AGGREGATE SHOULDERS, TYPE B 4"	SQ YD	65	65				
48102100	AGGREGATE WEDGE SHOULDER, TYPE B	TON	381	381				
60262700	INLETS TO BE RECONSTRUCTED	EACH	1	1				
60266600	VALVE BOXES TO BE ADJUSTED	EACH	20	20				
60300105	FRAMES AND GRATES TO BE ADJUSTED	EACH	63	63				
* 63000001	STEEL PLATE BEAM GUARDRAIL, TYPE A, 6 FOOT POSTS	FOOT	45	45				
60406000	FRAMES AND LIDS, TYPE 1, OPEN LID	EACH	7	7				
60300305	FRAMES AND LIDS TO BE ADJUSTED	EACH	30	30				
* 66900200	NON-SPECIAL WASTE DISPOSAL	CU YD	270	270				
* 63100169	TRAFFIC BARRIER TERMINAL TYPE 1 (SPECIAL) FLARED	EACH	1	1				

1

1

1

1

REV. 6-5-2018

FILE NAME =	USER NAME = parajmol	DESIGNED -	REVISED -
pw:\NLOB\EBID\INT\EG\Illinois.gov\FWIDOT\Documents\DOT\Offices\District\NProjects\DI016\B\CAD\Drawings\DI016\		CHECKED -	REVISED -
		DATE -	REVISED -

**STATE OF ILLINOIS
DEPARTMENT OF TRANSPORTATION**

**U.S. RTE. 122045 (31st ST. TO SOUTH OF I-294)
SUMMARY OF QUANTITIES**

SCALE: SHEET NO. OF SHEETS STA. TO STA.

F.A.P. RTE.	SECTION	COUNTY	TOTAL SHEETS	SHEET NO.
330	2017-03GR5	COOK	100	3
CONTRACT NO. 62F58				
FED. ROAD DIST. NO. 1 ILLINOIS FED. AID PROJECT				

SUMMARY OF QUANTITIES			CONSTRUCTION TYPE CODE	
CODE NO	ITEM	UNIT	TOTAL QUANTITIES	0005 80% FED 20% STATE
* 66900450	SPECIAL WASTE PLANS AND REPORTS	LSUM	1	1
63200310	GUARDRAIL REMOVAL	FOOT	45	45
* 66900530	SOIL DISPOSAL ANALYSIS	EACH	6	6
63500105	DELINEATORS	EACH	160	160
67000400	ENGINEER'S FIELD OFFICE, TYPE A	CAL MO	6	6
67100100	MOBILIZATION	L SUM	1	1
70100420	TRAFFIC CONTROL AND PROTECTION, STANDARD 701411	EACH	9	9
70300100	SHORT TERM PAVEMENT MARKING	FOOT	113645	113645
70102625	TRAFFIC CONTROL AND PROTECTION, STANDARD 701606	L SUM	1	1
70300150	SHORT TERM PAVEMENT MARKING REMOVAL	SO FT	37882	37882
70102630	TRAFFIC CONTROL AND PROTECTION, STANDARD 701601	L SUM	1	1
70300210	TEMPORARY PAVEMENT MARKING LETTERS AND SYMBOLS	SO FT	2128	2128
70102635	TRAFFIC CONTROL AND PROTECTION, STANDARD 701701	L SUM	1	1
70300220	TEMPORARY PAVEMENT MARKING - LINE 4"	FOOT	64558	64558
70102640	TRAFFIC CONTROL AND PROTECTION, STANDARD 701801	L SUM	1	1
70300240	TEMPORARY PAVEMENT MARKING - LINE 6"	FOOT	9951	9951
70200100	NIGHTTIME WORKZONE LIGHTING	L SUM	1	1
70300250	TEMPORARY PAVEMENT MARKING - LINE 8"	FOOT	2581	2581
70300260	TEMPORARY PAVEMENT MARKING - LINE 12"	FOOT	2301	2301
70300280	TEMPORARY PAVEMENT MARKING - LINE 24"	FOOT	1529	1529
70300520	PAVEMENT MARKING TAPE, TYPE III 4"	FOOT	28412	28412
* 72400500	RELOCATE SIGN PANEL ASSEMBLY - TYPE A	EACH	6	6
* 72501000	TERMINAL MARKER - DIRECT APPLIED	EACH	1	1
* SPECIALTY ITEM				

SUMMARY OF QUANTITIES			CONSTRUCTION TYPE CODE	
CODE NO	ITEM	UNIT	TOTAL QUANTITIES	0005 80% FED 20% STATE
* 78000100	THERMOPLASTIC PAVEMENT MARKING - LETTERS AND SYMBOLS	SO FT	2128	2128
* 78000200	THERMOPLASTIC PAVEMENT MARKING - LINE 4"	FOOT	64558	64558
* 78000400	THERMOPLASTIC PAVEMENT MARKING - LINE 6"	FOOT	9951	9951
* 78000500	THERMOPLASTIC PAVEMENT MARKING - LINE 8"	FOOT	2581	2581
* 78000600	THERMOPLASTIC PAVEMENT MARKING - LINE 12"	FOOT	2301	2301
* 78000650	THERMOPLASTIC PAVEMENT MARKING - LINE 24"	FOOT	1529	1529
* 78100100	RAISED REFLECTIVE PAVEMENT MARKER	EACH	2609	2609
78300200	RAISED REFLECTIVE PAVEMENT MARKER REMOVAL	EACH	2609	2609
* 78200005	GUARDRAIL REFLECTORS, TYPE A	EACH	2	2
* 85000200	MAINTENANCE OF EXISTING TRAFFIC SIGNAL INSTALLATION	EACH	10	10
* 88600600	DETECTOR LOOP REPLACEMENT	FOOT	5749	5749
* 89500400	RELOCATE EXISTING PEDESTRIAN PUSH-BUTTON	EACH	2	2
* 89502376	REBUILD EXISTING HANDHOLE	EACH	33	33
X0320050	CONSTRUCTION LAYOUT (SPECIAL)	L SUM	1	1
X0325222	WEED CONTROL, BASAL TREATMENT	GALLON	40	40
X0327611	REMOVE AND REINSTALL BRICK PAVER	SQ FT	20	20



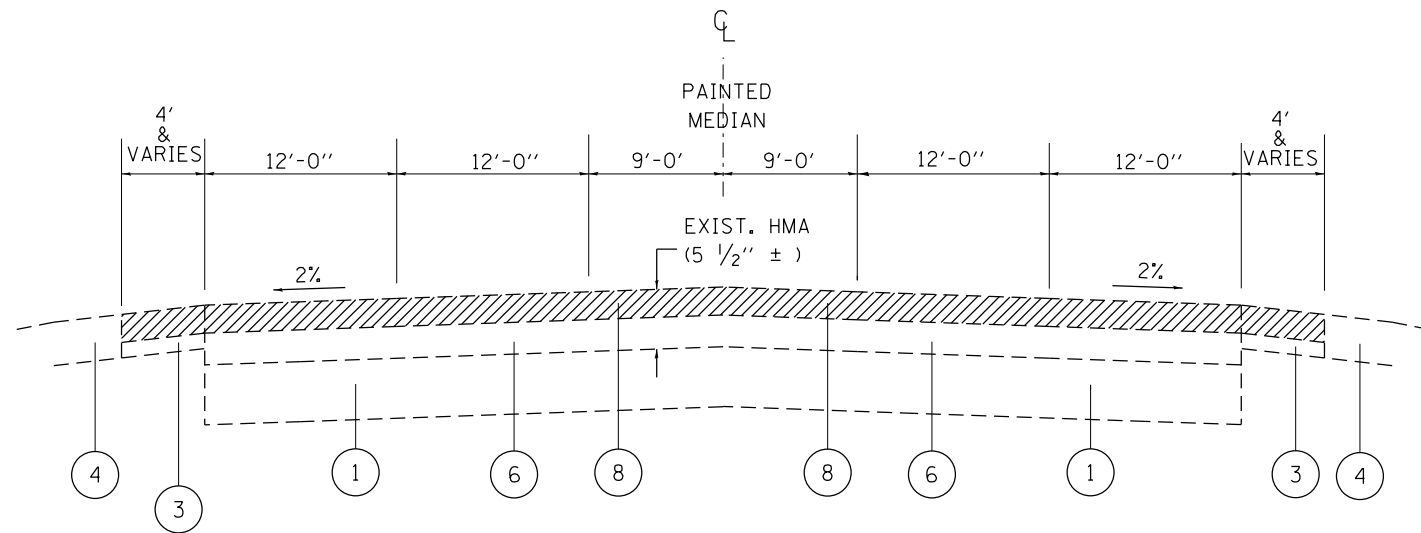
REV. 6-5-2018

FILE NAME =	USER NAME = parajmol	DESIGNED -	REVISED -
pw:\NLOB\EBID\INT\EG\Illinois.gov\FWIDOT\Documents\DOT\Offices\District\NProjects\DI016\B\CAD\Ord\Design\DI016\B\		REVISIONS -	REVISIONS -
PLOT SCALE = 100.0000' / 1" =	CHECKED -	REVISIONS -	REVISIONS -
PLOT DATE = 3/26/2018	DATE -	REVISIONS -	REVISIONS -

STATE OF ILLINOIS DEPARTMENT OF TRANSPORTATION		U.S. RTE. 122045 (31st ST. TO SOUTH OF I-294) SUMMARY OF QUANTITIES	
SCALE:	SHEET NO. OF SHEETS	STA. TO STA.	F.A.P. RTE. SECTION COUNTY TOTAL SHEETS SHEET NO.
			330 2017-036RS COOK 100 4
			CONTRACT NO. 62F58
FED. ROAD DIST. NO. 1 ILLINOIS FED. AID PROJECT			

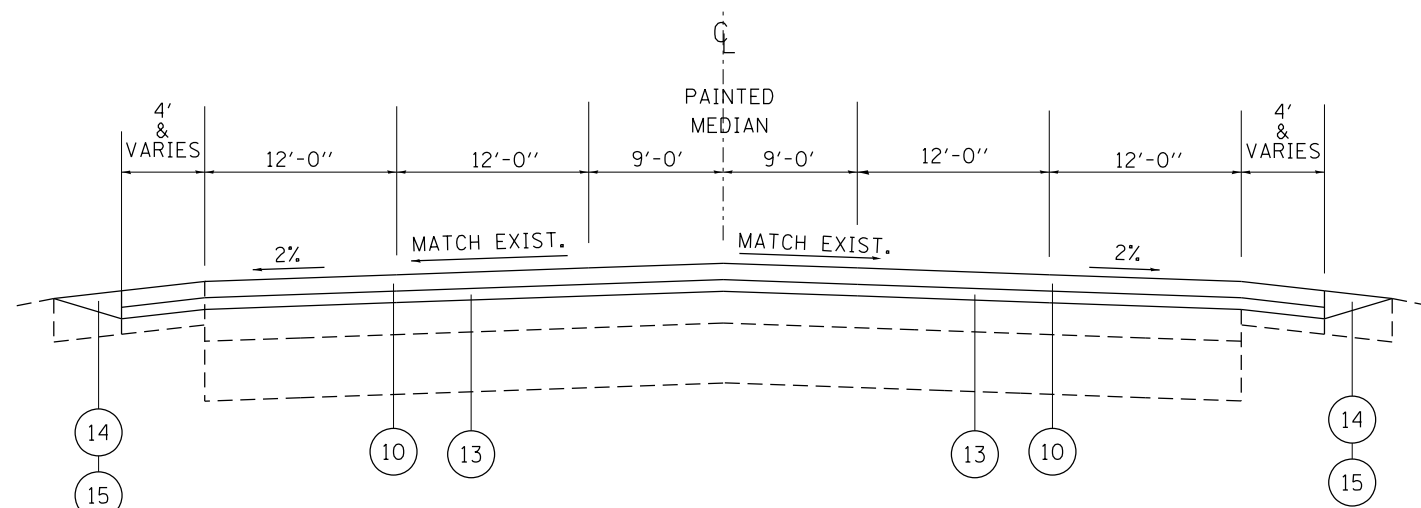
LEGEND

- ① EXISTING PCC PAVEMENT (US 20), ± 10"
- ② EXISTING AGGREGATE SUBGRADE
- ③ EXISTING HMA SHOULDER
- ④ EXISTING AGGREGATE SHOULDER
- ⑤ EXISTING COMB. CONCRETE CURB AND GUTTER
- ⑥ EXISTING HMA AFTER MILLING, ± 3" (MAINLINE)
- ⑦ EXISTING HMA SURFACE AFTER MILLING, ± 2 3/4" (RAMPS)
- ⑧ PROPOSED HMA SURFACE REMOVAL, 2 1/2"
- ⑨ PROPOSED HMA SURFACE REMOVAL, 2 1/4" (RAMPS)
•SEE NOTE FOR EXCEPTION TO ONE RAMP
- ⑩ PROPOSED POLY. HMA SURFACE COURSE, SMA, N80, 9.5, 1 3/4"
- ⑪ PROPOSED HMA SURFACE COURSE, MIX "D", N70, 1 1/2"
- ⑫ PROPOSED HIGH FRICTION SURFACE TREATMENT (HFST)
- ⑬ PROPOSED POLY. LEVELING BINDER (MACHINE METHOD), IL-4.75, N50, 3/4"
- ⑭ PROPOSED AGGREGATE WEDGE SHOULDER, TYPE B
- ⑮ PROPOSED GRADING AND SHAPING OF SHOULDERS



EXISTING TYPICAL SECTION
U.S. ROUTE 12/20/45 (NB & SB)
STA. 23+52 TO STA. 368+74
(EXCEPT LISTED OMISSIONS)

NOTE:
SEE PLANS FOR EXACT LOCATION OF ROADWAY SECTION WITH SHOULDERS.



PROPOSED TYPICAL SECTION
U.S. ROUTE 12/20/45 (NB & SB)
STA. 23+52 TO STA. 368+74
(EXCEPT LISTED OMISSIONS)

NOTE:
SEE PLANS FOR EXACT LOCATION OF ROADWAY SECTION WITH SHOULDERS.

NOTE:
THE CONTRACTOR SHALL MILL THE ROADWAY FIRST,
THEN PATCH PER BD-22 DETAIL.

HOT-MIX ASPHALT MIXTURE REQUIREMENTS

MIXTURE TYPE	AIR VOIDS @ NDES	QUALITY MANAGEMENT PROGRAM (QMP)
<i>ROADWAY RESURFACING:</i>		
POLY. HOT-MIX ASPHALT SURFACE COURSE, STONE MATRIX ASPHALT, N80, 9.5	3.5% AT 80 GYR.	PPF
POLY. LEVELING BINDER (MACHINE METHOD), IL-4.75, N50	3.5% AT 50 GYR.	OCP
<i>RAMPS RESURFACING (BY LANGRANGE ROAD AND I-55):</i>		
HOT-MIX ASPHALT SURFACE COURSE, MIX "D", N70, (IL-9.5 mm)	4% AT 70 GYR.	OCP (note 1)
POLY. LEVELING BINDER (MACHINE METHOD), IL-4.75, N50	3.5% AT 50 GYR.	OCP
<i>HMA DRIVEWAY FOR CURB AND GUTTER RESTORATION</i>		
HOT-MIX ASPHALT SURFACE COURSE, MIX "D", N50, (IL-9.5 mm), 2"	4% AT 50 GYR.	QC/OA
HOT-MIX ASPHALT BASE COURSE, 6" (HMA BINDER IL-19 mm)	4% AT 50 GYR.	QC/OA
<i>HOT-MIX ASPHALT PATCHING:</i>		
CLASS D PATCHES (HMA BINDER IL-19 mm)	4% AT 70 GYR.	QC/OA
QMP Designation: Quality Control/Quality Assurance (QC/OA); Quality Control for Performance (OCP); Pay for Performance (PPF)		

NOTES:

THE UNIT WEIGHT USED TO CALCULATE ALL HMA SURFACE MIXTURE QUANTITIES IS 112 LBS/SQ YD/IN.

THE "AC TYPE" FOR POLYMERIZED HMA MIXES SHALL BE "SBS/SBR PG 76-22" AND FOR NON-POLYMERIZED HMA THE "AC TYPE" SHALL BE "PG 64-22" UNLESS MODIFIED BY DISTRICT ONE SPECIAL PROVISIONS.

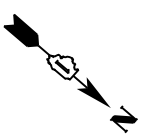
FOR USE OF RECYCLED MATERIALS SEE SPECIAL PROVISIONS.

QUALITY MANAGEMENT PROGRAM (QMP) IDENTIFIES THE PARTICULAR QUALITY CONTROL SPECIFICATION THAT APPLIES TO THE HMA MIXTURE.

NOTE 1:

THE DENSITY FOR THIS MIX WILL BE ASSIGNED 100 PERCENT PAY FACTOR, BE TESTED RANDOMLY AT THE FREQUENCY REQUIRED IN THE HMA - QUALITY FOR CONTROL FOR PERFORMANCE SPECIAL PROVISION AND SHALL MEET MINIMUM QC/OA DENSITY REQUIREMENTS IN ACCORDANCE WITH ARTICLE 1030 OF THE STANDARD SPECIFICATIONS.

△ REV. 6-5-2018



U.S. 12/20/45
(LAGRANGE RD.)

RESURFACING
OMISSION 2

BRIDGE STRUCTURE CARRYING US 12/20/45 (SOUTHBOUND)
SN: 016-2407

BRIDGE STRUCTURE CARRYING US 12/20/45 (NORTHBOUND)
SN: 016-2467

MATCH LINE STA. 69+00

MATCH LINE STA. 84+00

PAVEMENT MARKING LEGEND

1	PROP. 8" WHITE THERMO. PVT. MKR. LETTERS AND SYMBOLS (TYP.)	5	PROP. THERMO. PVT. MKR.-4" CENTERLINE, DOUBLE YELLOW (TYP.)	9	PROP. THERMO. PVT. MKR.-12" GORE MKR., CHEVRON WHITE (TYP.)
2	PROP. THERMO. PVT. MKR.-4" EDGELINE, SOLID WHITE (TYP.)	6	PROP. THERMO. PVT. MKR.-6" SOLID LINE, WHITE (TYP.)	10	PROP. THERMO. PVT. MKR.-12" DIAGONAL, YELLOW (TYP.)
3	PROP. THERMO. PVT. MKR.-4" EDGELINE, SOLID YELLOW (TYP.)	7	PROP. THERMO. PVT. MKR.-6" DOTTED LINE, WHITE (2' DASH, 6" SKIP) (TYP.)	11	PROP. THERMO. PVT. MKR.-24" STOP LINE, WHITE (TYP.)
4	PROP. THERMO. PVT. MKR.-4" 10' DASH - 30' SKIP, WHITE (TYP.)	8	PROP. THERMO. PVT. MKR.-8" GORE MKR., SOLID WHITE (TYP.)	12	PROP. THERMO. PVT. MKR.-12" DIAGONAL, WHITE (TYP.)

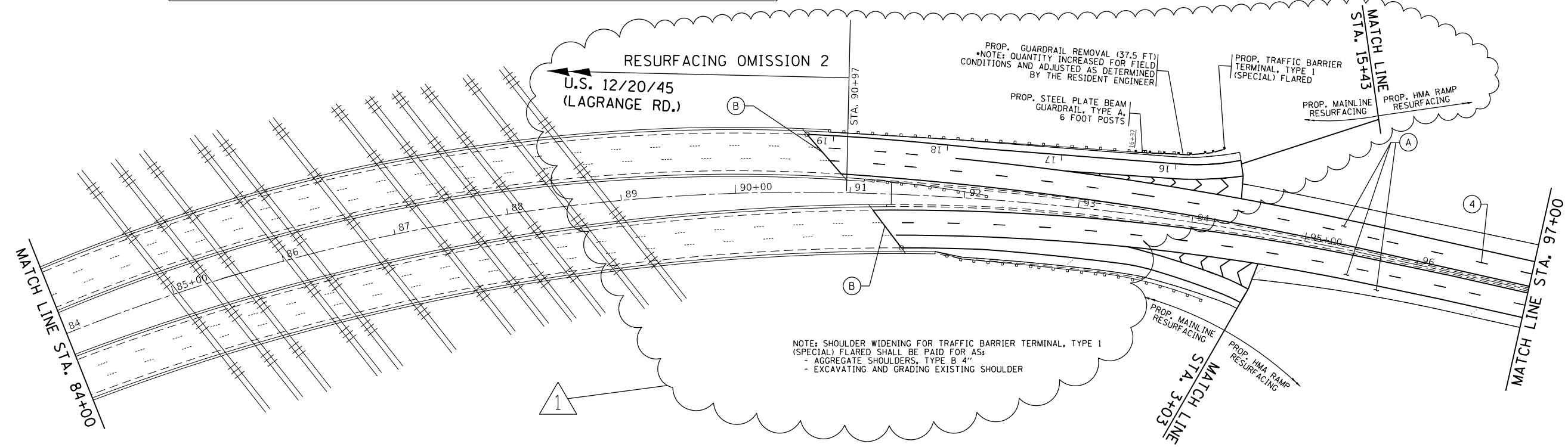
NOTE: ALL FINAL PAVEMENT MARKINGS AND RAISED REFLECTIVE PAVEMENT MARKERS SHALL BE PLACED IN ACCORDANCE WITH DISTRICT ONE DETAILS TC-11 AND TC-13

ROADWAY PROPOSED WORK LEGEND

(A)	PROP. HMA SURFACE REMOVAL, 2 1/2" PROP. POLY. HMA SURFACE COURSE, SMA, N80, 9.5, 1 3/4" PROP. POLY. LEVELING BINDER (MACHINE METHOD), IL-4.75, N50, 3/4"
(B)	PROP. HMA SURFACE REMOVAL - BUTT JOINT LIMIT OF RESURFACING
(C)	PROP. PCC SIDEWALK CURB RAMP IMPROVEMENT (SEE DETAIL SHEETS)



MODEL: Default
 FILE: h:\msd\p\110\110340\110340.dwg
 PROJECTS\110340\110340.dwg
 OFFICE: DISTRICT 1
 PROJECTS\110340\110340.dwg
 OFFICE: DISTRICT 1
 PROJECTS\110340\110340.dwg
 OFFICE: DISTRICT 1
 PROJECTS\110340\110340.dwg
 OFFICE: DISTRICT 1
 PROJECTS\110340\110340.dwg



REV. 6-5-2018

USER NAME = paraynoal	DESIGNED -	REVISED - AP 5/30/18
PLOT SCALE = 100.0000' / 1"	DRAWN -	REVISED -
PLOT DATE = 5/30/2018	CHECKED -	REVISED -
	DATE -	REVISED -

STATE OF ILLINOIS
DEPARTMENT OF TRANSPORTATION

ROADWAY PLAN
U.S. RTE. 12/20/45 (SOUTH OF I-294 TO 31st ST.)

SCALE: SHEET OF SHEETS STA. TO STA.

F.A.P. RTE.	SECTION	COUNTY	TOTAL SHEETS	SHEET NO.
330	2017-036R5	COOK	100	10
				CONTRACT NO. 62F58
ILLINOIS FED. AID PROJECT				