

STATE OF ILLINOIS  
DEPARTMENT OF TRANSPORTATION

**PROPOSED  
HIGHWAY PLANS**

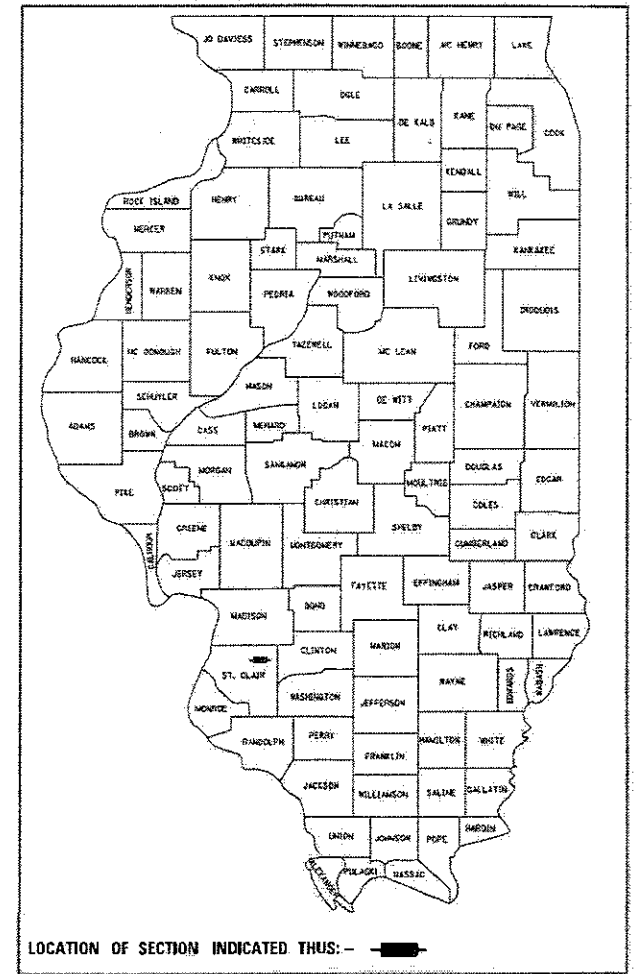
F.A.P. 805 (IL 161), F.A.U. 9177 (OLD IL 158)  
SECTION 124, 125RS-1  
PROJECT NHPP-STP-JWN6(747)  
3P - RESURFACING  
ST. CLAIR COUNTY

C-98-229-18

F.A.P. RTE.	SECTION	COUNTY	TOTAL SHEETS	SHEET NO.
*	124, 125RS-1	ST. CLAIR	29	1
ILLINOIS			CONTRACT NO. 76H01	

\* FAP 805, FAU 9177

D-98-079-13



**INDEX OF SHEETS:**

- 1 COVER SHEET
- 2 HIGHWAY STANDARDS, GENERAL NOTES, & COMMITMENTS
- 3-6 SUMMARY OF QUANTITIES
- 7-10 TYPICAL SECTIONS
- 11-19 SCHEDULE OF QUANTITIES
- 20-21 SURVEY MONUMENTS
- 22 LOCATION MAP
- 23-26 DETAILS
- 27-29 ELECTRICAL SHEETS

**TRAFFIC DATA:**

IL 161 - WEST JUNCTION IL 158 TO OLD IL 158 INTERSECTION	IL 161 EB /WB FROM COUNTY RD TO IL 4
2015 ADT = 11,300 (ACTUAL)	2015 ADT = 7,350 (ACTUAL)
2017 ADT = 11,500 (ESTIMATED)	2017 ADT = 7,500 (ESTIMATED)
2037 ADT = 14,100 (ESTIMATED)	2037 ADT = 9,100 (ESTIMATED)
SU = 4.2% MU = 1.8%	SU = 4.1% MU = 1.5%

OLD IL 158 NORTH OF IL 161 INTERSECTION	IL 161 EAST OF IL 4
2015 ADT = 11,700 (ACTUAL)	2015 ADT = 4,350 (ACTUAL)
2017 ADT = 12,200 (ESTIMATED)	2017 ADT = 4,450 (ESTIMATED)
2037 ADT = 14,900 (ESTIMATED)	2037 ADT = 5,400 (ESTIMATED)
SU = 4.2% MU = 1.8%	SU = 3.2% MU = 1.6%

IL 161 EB /WB FROM OLD IL 158 TO COUNTY RD

2015 ADT = 8,150 (ACTUAL)

2017 ADT = 8,300 (ESTIMATED)

2037 ADT = 10,100 (ESTIMATED)

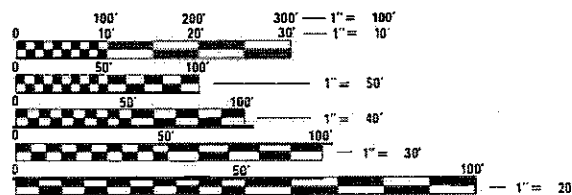
SU = 6.7% MU = 2.5%

**FUNCTIONAL CLASSIFICATION:**

IL 161 - OTHER ARTERIAL  
OLD IL 158 - MAJOR COLLECTOR

**TOWNSHIPS:**

SHILOH VALLEY  
MASCOUTAH

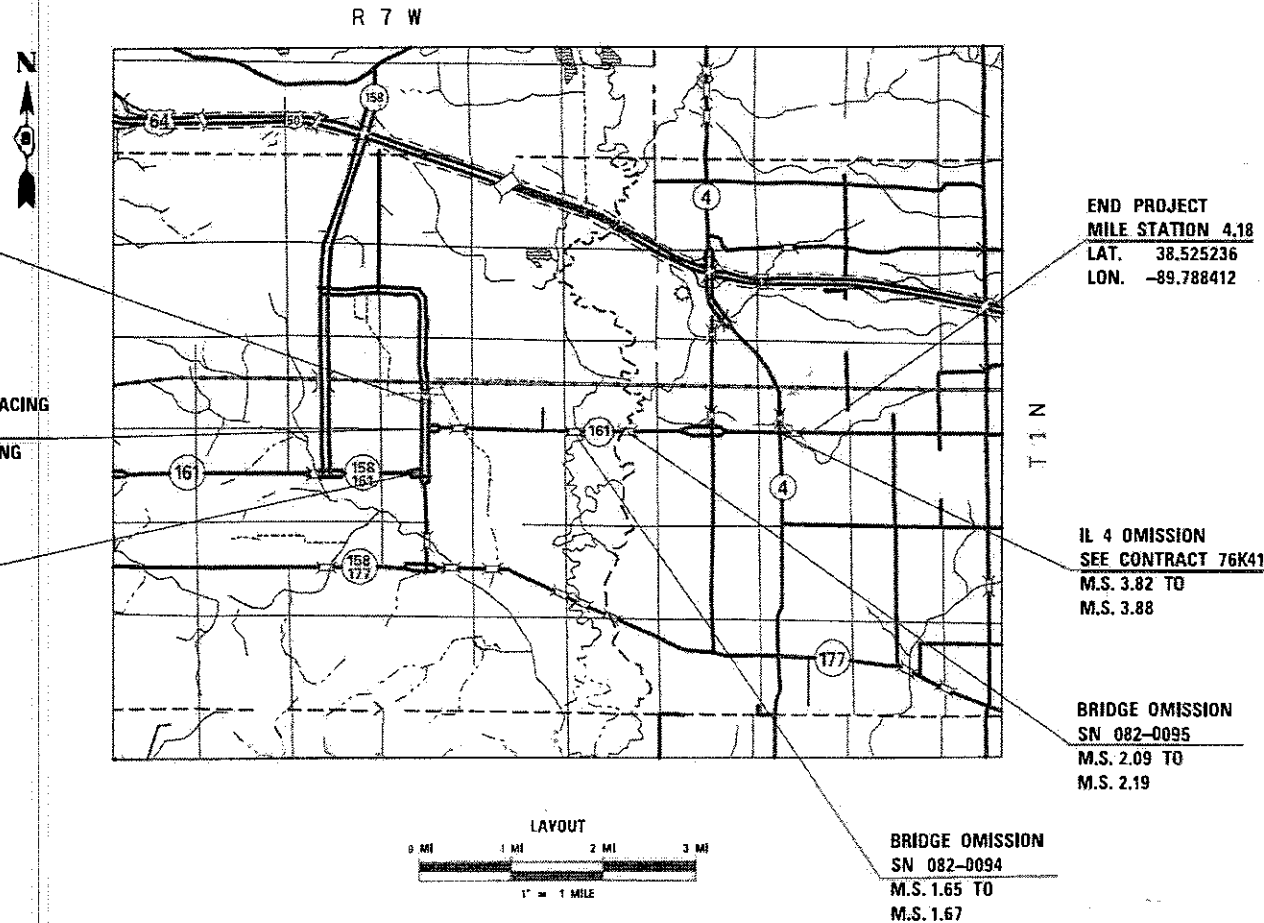


FULL SIZE PLANS HAVE BEEN PREPARED USING STANDARD ENGINEERING SCALES, REDUCED SIZED PLANS WILL NOT CONFORM TO STANDARD SCALES. IN MAKING MEASUREMENTS ON REDUCED PLANS THE ABOVE SCALES MAY BE USED.

J.U.L.I.E.  
JOINT UTILITY LOCATION INFORMATION FOR EXCAVATION  
1-800-892-0123  
OR 811

PROJECT ENGINEER: TIM PADGETT (618) 346-3325  
PROJECT MANAGER: PHILIP COPPERNOLL (618) 346-3480

CONTRACT NO. 76H01



GROSS LENGTH = 24,552 FT. = 4.65 MILE  
NET LENGTH = 23,599 FT. = 4.47 MILE

STATE OF ILLINOIS  
DEPARTMENT OF TRANSPORTATION

SUBMITTED *March 9 2018*

*Jeffrey Z. Khan*  
REGIONAL ENGINEER

*May 11 2018*  
ENGINEER OF DESIGN AND ENVIRONMENT

*Paul P. Chaf*  
DIRECTOR OF HIGHWAYS PROJECT IMPLEMENTATION

PRINTED BY THE AUTHORITY  
OF THE STATE OF ILLINOIS

**HIGHWAY STANDARDS**

- 000001-06 STANDARD SYMBOLS, ABBREVIATIONS AND PATTERNS
- 001001-02 AREAS OF REINFORCEMENT BARS
- 001006 DECIMAL OF AN INCH AND OF A FOOT
- 442201-03 CLASS C AND D PATCHES
- 630001-12 STEEL PLATE BEAM GUARDRAIL
- 630101-10 STRONG POST GUARDRAIL ATTACHED TO CULVERT
- 630301-08 SHOULDER WIDENING FOR TYPE 1 GUARDRAIL TERMINALS
- 642006 SHOULDER RUMBLE STRIPS, 8 IN.
- 701006-05 OFF-RD OPERATIONS, 2L, 2W, 15' TO 24" FROM PAVEMENT EDGE
- 701011-04 OFF-RD MOVING OPERATIONS, 2L, 2W, DAY ONLY
- 701201-04 LANE CLOSURE, 2L, 2W, DAY ONLY, FOR SPEEDS > 45 MPH
- 701206-04 LANE CLOSURE, 2L, 2W, NIGHT ONLY, FOR SPEEDS >= 45 MPH
- 701301-04 LANE CLOSURE, 2L, 2W, SHORT TIME OPERATIONS
- 701306-04 LANE CLOSURE, 2L, 2W, SLOW MOVING OPERATIONS DAY ONLY, FOR SPEEDS > 45 MPH
- 701311-03 LANE CLOSURE, 2L, 2W, MOVING OPERATIONS - DAY ONLY
- 701336-06 LANE CLOSURE, 2L, 2W, WORK AREAS IN SERIES, FOR SPEEDS > 45 MPH
- 701421-08 LANE CLOSURE, MULTILANE, DAY OPERATIONS ONLY FOR SPEEDS >= 45 MPH TO 55 MPH
- 701426-09 LANE CLOSURE, MULTILANE, INTERMITTENT OR MOVING OPERATIONS FOR SPEEDS > 45 MPH
- 701501-06 URBAN LANE CLOSURE, 2L, 2W, UNDIVIDED
- 701701-10 URBAN LANE CLOSURE, MULTILANE INTERSECTION
- 701901-07 TRAFFIC CONTROL DEVICES
- 725001-01 OBJECT AND TERMINAL MARKERS
- 780001-05 TYPICAL PAVEMENT MARKINGS
- 781001-04 TYPICAL APPLICATIONS RAISED REFLECTIVE PAVEMENT MARKERS
- 782001-01 CURB REFLECTORS
- 782006 GUARDRAIL AND BARRIER WALL REFLECTOR MOUNTING DETAILS

**GENERAL NOTES**

1. ILLINOIS STATE LAW REQUIRES A 48-HOUR NOTICE BE GIVEN TO ALL UTILITIES WITHIN THE PROJECT AREA BEFORE DIGGING. FIELD MARKING OF FACILITIES MAY BE OBTAINED BY CONTACTING J.U.L.I.E. OR FOR NON-MEMBERS, THE UTILITY COMPANY DIRECTLY. AGENCIES KNOWN TO HAVE FACILITIES WITHIN THE PROJECT AREA ARE AS FOLLOWS:

	AERIAL	BURIED
* AMEREN ILLINOIS - (GAS & ELECTRIC)	X	X
* AT&T ILLINOIS - (COMMUNICATIONS)	X	X
* AT&T CORPORATION - (COMMUNICATIONS)	X	X
* CENTURYLINK, INC. - (COMMUNICATIONS)	X	X
* CHARTER COMMUNICATIONS, INC. - (CABLE TV)	X	X
* CLEARWAVE COMMUNICATIONS - (COMMUNICATIONS)	X	X
* FRONTIER COMMUNICATIONS - (COMMUNICATIONS)	X	X
* ILLINOIS AMERICAN WATER COMPANY- (WATER)	X	X
* LEVEL 3 COMMUNICATIONS, LLC - (COMMUNICATIONS)	X	X
* CITY OF MASCOUTAH - (WATER & SANITARY SEWER)	X	X
* CITY OF MASCOUTAH - (ELECTRIC)	X	X
* CITY OF MASCOUTAH - (LIGHTING)	X	X
* MASCOUTAH COMMUNITY UNIT SCHOOL DISTRICT #19 - (COMMUNICATIONS)	X	X
* MID AMERICA ST. LOUIS AIRPORT - (ELECTRIC)	X	X
* MID AMERICA ST. LOUIS AIRPORT - (WATER & SANITARY SEWER)	X	X
* MID AMERICA ST. LOUIS AIRPORT - (COMMUNICATIONS)	X	X
* QUEST COMMUNICATIONS - (COMMUNICATIONS)	X	X
* SCOTT AIR FORCE BASE - (GAS & ELECTRIC)	X	X
* SCOTT AIR FORCE BASE - (COMMUNICATIONS)	X	X
* SCOTT AIR FORCE BASE - (WATER & SANITARY SEWER)	X	X
* SLM WATER COMMISSION - (WATER)	X	X
* WINDSTREAM KDL, INC. - (COMMUNICATIONS)	X	X

MEMBERS OF J.U.L.I.E. CALL TOLL FREE (800) 892-0123 OR 811 AND ARE INDICATED BY \*. NON-J.U.L.I.E. MEMBERS MUST BE NOTIFIED INDIVIDUALLY.

- 2. THE CONTRACTOR AND ENGINEER SHALL BE AWARE THAT NO SURVEY WAS PERFORMED FOR THIS PROJECT. THE STATIONING, TOPOGRAPHY, AND QUANTITIES SHOWN IN THE PLANS WERE CREATED USING MICROFILM AND FIELD MEASUREMENTS. ALL SHALL BE ASSUMED TO BE APPROXIMATE. THE CONTRACTOR SHALL VERIFY DIMENSIONS AND CONDITIONS IN THE FIELD PRIOR TO CONSTRUCTION AND ORDERING OF MATERIALS.
- 3. ALL AREAS DISTURBED FOR ANY REASON SHALL BE PERMANENTLY SEEDED AS DIRECTED BY THE ENGINEER. ALL AREAS DISTURBED BY THE CONTRACTOR OUTSIDE THE PROPOSED CONSTRUCTION LIMITS SHALL BE SEEDED AT THE CONTRACTOR'S EXPENSE.
- 4. THE TEMPORARY RAMPS USED ON ALL SIDE STREETS AND ENTRANCES SHALL BE 2 FEET IN LENGTH SO AS NOT TO INTERFERE WITH THE THRU TRAFFIC LANES.

**GENERAL NOTES (CONTINUED)**

- 5. THE THICKNESS OF THE BITUMINOUS MIXTURE SHOWN ON THE PLANS IS THE NOMINAL THICKNESS. DEVIATIONS FROM THE NOMINAL THICKNESS WILL BE PERMITTED WHEN SUCH DEVIATIONS OCCUR DUE TO IRREGULARITIES IN THE EXISTING SURFACE OR BASE ON WHICH THE BITUMINOUS MIXTURE IS PLACED.
- 6. ALL TRAFFIC CONTROL DEVICES SHALL BE NEW OR "LIKE NEW" CONDITION AT THE BEGINNING OF THE PROJECT.
- 7. FLAGGERS SHALL BE PRESENT DURING ALL CLOSURE HOURS INCLUDING LUNCH HOURS AND NO ADDITIONAL COMPENSATION SHALL BE ALLOWED.
- 8. FOUR CHANGEABLE MESSAGE BOARDS SHALL BE REQUIRED FOR THIS PROJECT. THEY SHALL BE PLACED TWO WEEKS PRIOR TO ANY LANE CLOSURE. THE CHANGEABLE MESSAGE BOARDS SHALL BE PLACED AS DIRECTED BY THE ENGINEER.
- 9. THE ILLINOIS DEPARTMENT OF TRANSPORTATION STRONGLY ENCOURAGES THE PRIME CONTRACTOR AND THEIR APPROVED SUB-CONTRACTORS TO HIRE MINORITY, WOMEN AND DISADVANTAGED INDIVIDUALS FROM ITS FEDERALLY FUNDED HIGHWAY CONSTRUCTION CAREERS TRAINING PROGRAM (HCCTP) TO HELP MEET WORKFORCE AND TRAINEE GOALS. THIS PROGRAM IS TRAINING MINORITIES, WOMEN AND DISADVANTAGED INDIVIDUALS IN HIGHWAY CONSTRUCTION-RELATED SKILLS, E.G., MATH FOR THE TRADES, JOB READINESS, TECHNICAL SKILLS COURSEWORK (CARPENTRY, CONCRETE FLATWORK, BLUEPRINT READING, SITE PLANS, SITE WORK, TOOLS USE, ETC.) AND OSHA 10 HOUR CERTIFICATION, TO PREPARE THEM FOR A CAREER IN THE HIGHWAY CONSTRUCTION TRADES. GRADUATES ARE WELL-TRAINED AND READY TO BECOME PRODUCTIVE ENTRY-LEVEL CONSTRUCTION WORKERS. PLEASE CONTACT THE DISTRICT 8 EEO OFFICE AT 618-346-3360 AND/OR THE HCCTP COORDINATOR AT 618/874-6528 TO LEARN MORE ABOUT THE PROGRAM AND FOR ASSISTANCE IN MEETING WORKFORCE AND TRAINEE GOALS.
- 10. IF THE SURFACE REMOVAL ON THIS PROJECT PRODUCES A MILLED EDGE NEAR CENTERLINE GREATER THAN 1.5 INCHES BETWEEN ADJACENT OPEN LANES OF TRAFFIC, ONE OF THE FOLLOWING SHALL APPLY:
  - THE CONTRACTOR SHALL ORGANIZE THE WORK TO AVOID THE MILLED EDGE
  - THE CONTRACTOR SHALL CONSTRUCT A TEMPORARY HOT-MIX ASPHALT WEDGE ALONG THE MILLED EDGE
  - THE CONTRACTOR SHALL CONSTRUCT A MILLED SLOPED EDGE (MINIMUM 1:3) ALONG THE MILLED EDGE
 THE COST OF THIS WORK SHALL BE INCLUDED IN THE COST PER SQUARE YARD FOR HOT-MIX ASPHALT SURFACE REMOVAL OF THE DEPTH SPECIFIED.
- 11. AN ESTIMATED QUANTITY OF 13,350 TONS OF CUTTINGS FROM THE HOT-MIX ASPHALT SURFACE REMOVAL OPERATION IS ANTICIPATED.
- 12. THE PROPOSED PAVEMENT MARKING SHALL MATCH THE LOCATIONS OF THE EXISTING PAVEMENT MARKING, AS DIRECTED BY THE ENGINEER.
- 13. ALIGNMENT TIES FOR SURVEY MONUMENT COVERS WILL BE PROVIDED AT THE PRECONSTRUCTION MEETING.
- 14. MTD CAN OPERATE IN AN UNLOADED CONDITION ON SN 082-0095. THE MTD IS PROHIBITED FROM OPERATING ON SN 082-0094.
- 15. NO OVERNIGHT LANE CLOSURES WILL BE ALLOWED EXCEPT WHEN NEEDED FOR CONSTRUCTION OPERATIONS WHILE WORKING AT NIGHT.

**COMMITMENTS**

NONE

**MIXTURE REQUIREMENTS**

THE FOLLOWING MIXTURE REQUIREMENTS ARE APPLICABLE FOR THIS PROJECT.

MIXTURE USE	SURFACE	LEVEL BINDER	PATCHING	INCIDENTAL	SHOULDERS ≥ 2.25"	SHOULDERS < 2.25"
AC/PG	PG 64-22	PG 64-22	PG 64-22	PG 64-22	PG 64-22	PG 64-22
RAP % (MAX)	SEE SPECIAL PROVISION	SEE SPECIAL PROVISION	SEE SPECIAL PROVISION	SEE SPECIAL PROVISION	SEE SPECIAL PROVISION	SEE SPECIAL PROVISION
DESIGN AIR VOIDS	4.0% @ Ndes=70	4.0% @ Ndes=70	4.0% @ Ndes=70	4.0% @ Ndes=70	4.0% @ Ndes=30	4.0% @ Ndes=30
MIX COMPOSITION (GRADATION)	IL 9.5	IL 9.5FG	IL 19.0	IL 9.5	IL 19.0L	IL 9.5L
FRICTION AGG	MIXTURE "D"	MIXTURE "C"	MIXTURE "B"	MIXTURE "D"		
QUALITY MGMT PROGRAM	QCP	QCP	QC/QA	QC/QA	QC/QA	QC/QA

PLAN QUANTITIES FOR HMA SURFACE COURSE ITEMS ARE CALCULATED USING A UNIT WEIGHT OF 112 LB/SQ YD/IN.

\*\* FAP 805 / FAU 9177

CODE NO.	ITEM	UNIT	TOTAL QUANTITY	CONSTRUCTION CODE		
				FAU 9177 (STP)	FAP 805 (NHPP)	
				ROADWAY	ROADWAY	ROADWAY
				0005	0005	0005
				URBAN	URBAN	RURAL
40600290	BITUMINOUS MATERIALS (TACK COAT)	POUND	63383	10279	49683	3421
40600637	LEVELING BINDER (MACHINE METHOD), IL-9.5FG, N70	TON	3946	640	3093	213
40600982	HOT-MIX ASPHALT SURFACE REMOVAL - BUTT JOINT	SQ YD	467.5	62.4	322.8	82.3
40600990	TEMPORARY RAMP	SQ YD	1842.2	189.6	1582.3	70.3
40603340	HOT-MIX ASPHALT SURFACE COURSE, MIX "D", N70	TON	7890	1280	6184	426
40800029	BITUMINOUS MATERIALS (TACK COAT)	POUND	87.2	18.7	63.3	5.2
40800050	INCIDENTAL HOT-MIX ASPHALT SURFACING	TON	94.9	20.3	69.1	5.5
44000157	HOT-MIX ASPHALT SURFACE REMOVAL, 2"	SQ YD	119698	18305	94233	7160
44200156	PAVEMENT PATCHING, TYPE II, 13 INCH	SQ YD	1025.5	315.6	709.9	
44200160	PAVEMENT PATCHING, TYPE III, 13 INCH	SQ YD	177.2		177.2	
44200162	PAVEMENT PATCHING, TYPE IV, 13 INCH	SQ YD	30.7		30.7	
48203100	HOT-MIX ASPHALT SHOULDERS	TON	3155	367	2530	258
* 63000001	STEEL PLATE BEAM GUARDRAIL, TYPE A, 6 FOOT POSTS	FOOT	350		350	
* 63000030	STRONG POST GUARDRAIL ATTACHED TO CULVERT	FOOT	90		90	

\* SPECIALTY ITEM

\* FAP 805 / FAU 9177

FILE NAME =	USER NAME = CoppemolPE	DESIGNED -	REVISED -	<b>STATE OF ILLINOIS DEPARTMENT OF TRANSPORTATION</b>	<b>SUMMARY OF QUANTITIES</b>			F.A. RTE.	SECTION	COUNTY	TOTAL SHEETS	SHEET NO.	
per:\MLB4EBID\INTEG.\Illinois.gov\PWDOT\Documents\1011\Office\District 8\Projects\1876\11\CAD\data\CAD\sheet\1876\DRAWING.dwg	11\Office\District 8\Projects\1876\11\CAD\data\CAD\sheet\1876\DRAWING.dwg	CHECKED -	REVISED -		SCALE:	SHEET 1	OF 4	SHEETS	STA.	TO STA.	ILLINOIS	FED. AID PROJECT	
Default	PLOT SCALE = 100.0000' / in.	DATE -	REVISED -								ST. CLAIR	29	3
	PLOT DATE = 3/2/2018										CONTRACT NO.	76H01	

CODE NO.	ITEM	UNIT	TOTAL QUANTITY	CONSTRUCTION CODE		
				FAU 9177 (STP)	FAP 805 (NHPP)	
				ROADWAY 0005 URBAN	ROADWAY 0005 URBAN	ROADWAY 0005 RURAL
* 63100167	TRAFFIC BARRIER TERMINAL, TYPE 1 (SPECIAL) TANGENT	EACH	2		2	
63200310	GUARDRAIL REMOVAL	FOOT	520		520	
64200108	SHOULDER RUMBLE STRIPS, 8 INCH	FOOT	59225	8579	47509	3137
67000400	ENGINEER'S FIELD OFFICE, TYPE A	CAL MO	2		2	
67100100	MOBILIZATION	LSUM	1	0.3	0.6	0.1
70100310	TRAFFIC CONTROL AND PROTECTION, STANDARD 701421	LSUM	1	0.3	0.6	0.1
70100450	TRAFFIC CONTROL AND PROTECTION, STANDARD 701201	LSUM	1	0.3	0.6	0.1
70100455	TRAFFIC CONTROL AND PROTECTION, STANDARD 701206	LSUM	1		0.9	0.1
70100460	TRAFFIC CONTROL AND PROTECTION, STANDARD 701306	LSUM	1	0.3	0.6	0.1
70100600	TRAFFIC CONTROL AND PROTECTION, STANDARD 701336	LSUM	1	0.3	0.6	0.1
70102620	TRAFFIC CONTROL AND PROTECTION, STANDARD 701501	LSUM	1	0.3	0.6	0.1
70102635	TRAFFIC CONTROL AND PROTECTION, STANDARD 701701	LSUM	1	0.3	0.6	0.1
70200100	NIGHTTIME WORK ZONE LIGHTING	LSUM	1	0.3	0.6	0.1
70300100	SHORT TERM PAVEMENT MARKING	FOOT	11513	1767	8808	938

\* SPECIALTY ITEM

\* FAP 805 / FAU 9177

FILE NAME =	USER NAME = Coppemilife	DESIGNED -	REVISED -	<b>STATE OF ILLINOIS DEPARTMENT OF TRANSPORTATION</b>	<b>SUMMARY OF QUANTITIES</b>			F.A. RTE.	SECTION	COUNTY	TOTAL SHEETS	SHEET NO.	
pw:\ML\84EB\INTEG\Illinois.gov\FW\DOT\Documents\DOT Offices\District 8\Projects\0876\H01\CADD\Drawings\CAD\Drawings\0876\BRAN\BDD0.dwg		CHECKED -	REVISED -		SCALE:	SHEET 2	OF 4	SHEETS	STA.	TO STA.	ST. CLAIR	29	4
PLOT SCALE = 1/8" = 100.0000' / 1/8"		DATE -	REVISED -		CONTRACT NO. 76H01								
Default					ILLINOIS FED. AID PROJECT								

CODE NO.	ITEM	UNIT	TOTAL QUANTITY	CONSTRUCTION CODE		
				FAU 9177 (STP)	FAP 805 (NHPP)	
				ROADWAY 0005 URBAN	ROADWAY 0005 URBAN	ROADWAY 0005 RURAL
70300150	SHORT TERM PAVEMENT MARKING REMOVAL	SQ FT	3857	591	2952	314
70300210	TEMPORARY PAVEMENT MARKING LETTERS AND SYMBOLS	SQ FT	452.8	109.2	312.4	31.2
70300220	TEMPORARY PAVEMENT MARKING - LINE 4"	FOOT	95514	11291	76489	7734
70300260	TEMPORARY PAVEMENT MARKING - LINE 12"	FOOT	1385		1128	257
70300280	TEMPORARY PAVEMENT MARKING - LINE 24"	FOOT	323	128	195	
* 72501000	TERMINAL MARKER - DIRECT APPLIED	EACH	2		2	
* 78000100	THERMOPLASTIC PAVEMENT MARKING - LETTERS AND SYMBOLS	SQ FT	452.8	109.2	312.4	31.2
* 78000200	THERMOPLASTIC PAVEMENT MARKING - LINE 4"	FOOT	95514	11291	76489	7734
* 78000600	THERMOPLASTIC PAVEMENT MARKING - LINE 12"	FOOT	1385		1128	257
* 78000650	THERMOPLASTIC PAVEMENT MARKING - LINE 24"	FOOT	323	128	195	
* 78100100	RAISED REFLECTIVE PAVEMENT MARKER	EACH	705	76	556	73
* 78200005	GUARDRAIL REFLECTORS, TYPE A	EACH	12		12	
* 78200020	CURB REFLECTORS	EACH	70		70	
78300200	RAISED REFLECTIVE PAVEMENT MARKER REMOVAL	EACH	705	76	556	73

\* SPECIALTY ITEM

\* FAP 805 / FAU 9177

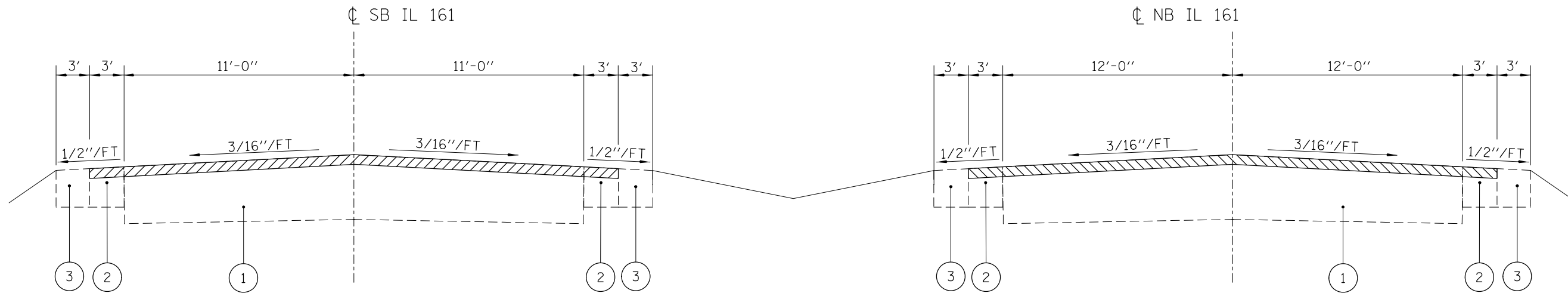
FILE NAME =	USER NAME = Coppell/PE	DESIGNED =	REVISED =	<b>STATE OF ILLINOIS DEPARTMENT OF TRANSPORTATION</b>	<b>SUMMARY OF QUANTITIES</b>			F.A. RTE.	SECTION	COUNTY	TOTAL SHEETS	SHEET NO.
Default		CHECKED =	REVISED =						124, 125RS-1	ST. CLAIR	29	5
		PLOT SCALE = 100.0000' / 1"	DATE =		SCALE:	SHEET 3	OF 4	SHEETS	STA.	TO STA.	CONTRACT NO.	76H01
		PLOT DATE = 3/2/2018									ILLINOIS	FED. AID PROJECT

CODE NO.	ITEM	UNIT	TOTAL QUANTITY	CONSTRUCTION CODE		
				FAU 9177 (STP)	FAP 805 (NHPP)	
				ROADWAY 0005 URBAN	ROADWAY 0005 URBAN	ROADWAY 0005 RURAL
* 80300100	LOCATING UNDERGROUND CABLE	FOOT	150	50	100	
* 88600600	DETECTOR LOOP REPLACEMENT	FOOT	3919	1666	2253	
X4811800	AGGREGATE SHOULDERS (SPECIAL)	SQ YD	52		52	
X7015005	CHANGEABLE MESSAGE SIGN	CAL DA	56	17	34	5
X7030005	TEMPORARY PAVEMENT MARKING REMOVAL	SQ FT	34340	4133	27340	2867
* X7800100	PAINT PAVEMENT MARKING - RAISED MEDIAN	SQ FT	20		20	
* X7800200	PAINT PAVEMENT MARKING CURB	FOOT	110		110	
Z0033700	LONGITUDINAL JOINT SEALANT	FOOT	38633	5601	30627	2405
Z0076600	TRAINEES	HOUR	1000	1000		
∅ Z0034105	MATERIAL TRANSFER DEVICE	TON	11836	1920	9277	639
Z0076604	TRAINEES TRAINING PROGRAM GRADUATE	HOUR	1000	1000		
∅ Z0070100	SURVEY MONUMENT COVER ASSEMBLY	EACH	7		7	

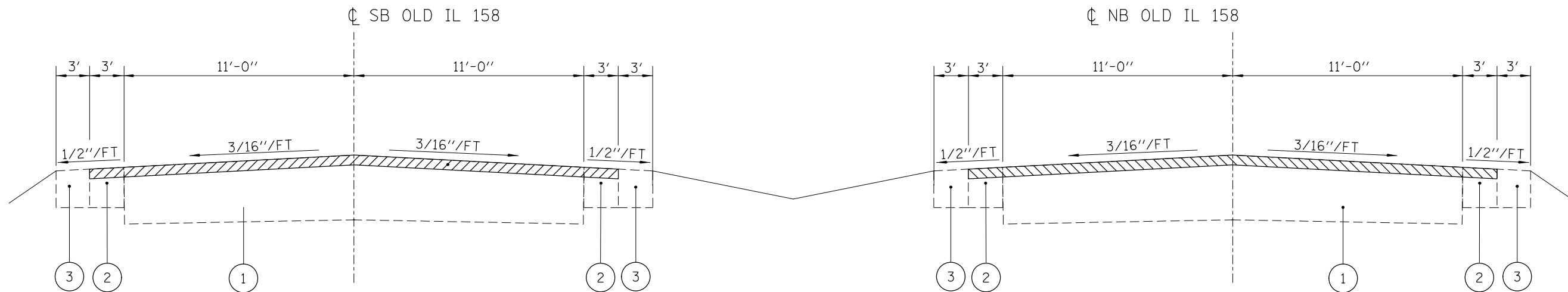
\* SPECIALTY ITEM  
∅ 0042

• FAP 805 / FAU 9177

FILE NAME =	USER NAME = Coppemolle	DESIGNED -	REVISIONS -	<b>STATE OF ILLINOIS DEPARTMENT OF TRANSPORTATION</b>	<b>SUMMARY OF QUANTITIES</b>			F.A. RTE.	SECTION	COUNTY	TOTAL SHEETS	SHEET NO.	
pw318D84EBDINTEG.Illinois.gov/PWDOT/1documents/ID	OT Offices/IDistrict/8/Projects/ID67EH011/CADDData/CADSheets/ID67	CHECKED -	REVISIONS -		SCALE:	SHEET 4	OF 4	SHEETS	STA.	TO STA.	124, 125RS-1	29	6
Default	PLOT SCALE = 100.0000 / in.	DATE -	REVISIONS -							CONTRACT NO. 76H01			
	PLOT DATE = 3/2/2018									ILLINOIS FED. AID PROJECT			



IL 161 NB/SB TYPICAL SECTION  
MILE STATION 0.0 TO 0.49



OLD IL 158 TYPICAL SECTION  
MILE STATION 0.49 TO 0.93

LEGEND

- ① EXISTING PAVEMENT
- ② EXISTING BITUMINOUS SHOULDER
- ③ EXISTING AGGREGATE SHOULDERS
- ④ PROPOSED BITUMINOUS MATERIALS (TACK COAT)
- ⑤ PROPOSED LEVEL BINDER, 3/4"
- ⑥ PROPOSED SURFACE COURSE, 1 1/2"
- ⑦ PROPOSED HMA SHOULDER, 2 1/4"
- ⑧ PROPOSED LONGITUDINAL JOINT SEALANT
- ⑨ PROPOSED THERMOPLASTIC PAVEMENT MARKING
- ⑩ PROPOSED SHOULDER RUMBLE STRIPS, 8 INCH

HMA SURFACE REMOVAL, 2"

\* FAP 805 / FAU 9177

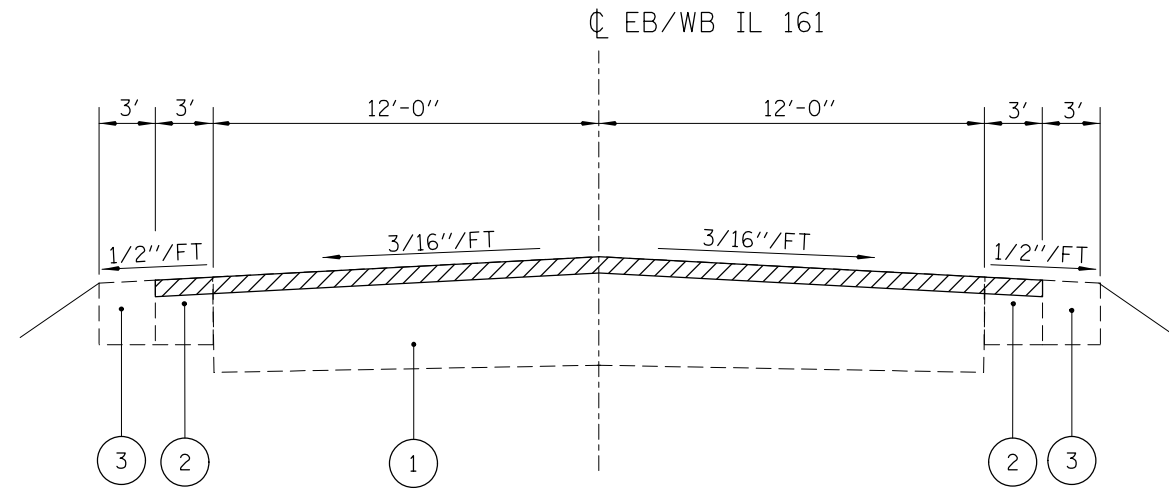
FILE NAME =	USER NAME = CoppemolPE	DESIGNED -	REVISED -
pw:\IL084EB\INTEG\Illinois.gov\PWIDOT\Documents\DOT Offices\District 8\Projects\D876H01\CADDData\CADsheets\D876H01\CA		DRAWN -	REVISED -
Default	PLOT SCALE = 100.0000' / in.	CHECKED -	REVISED -
	PLOT DATE = 3/2/2018	DATE -	REVISED -

STATE OF ILLINOIS  
DEPARTMENT OF TRANSPORTATION

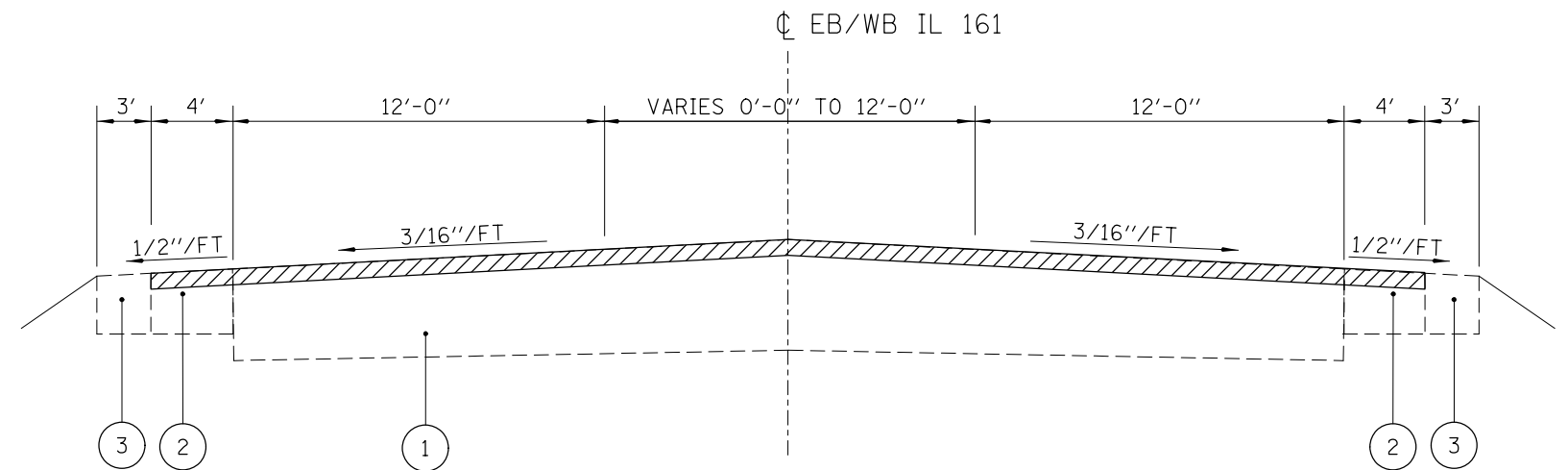
EXISTING TYPICAL SECTIONS

SCALE: SHEET 1 OF 4 SHEETS STA. TO STA.

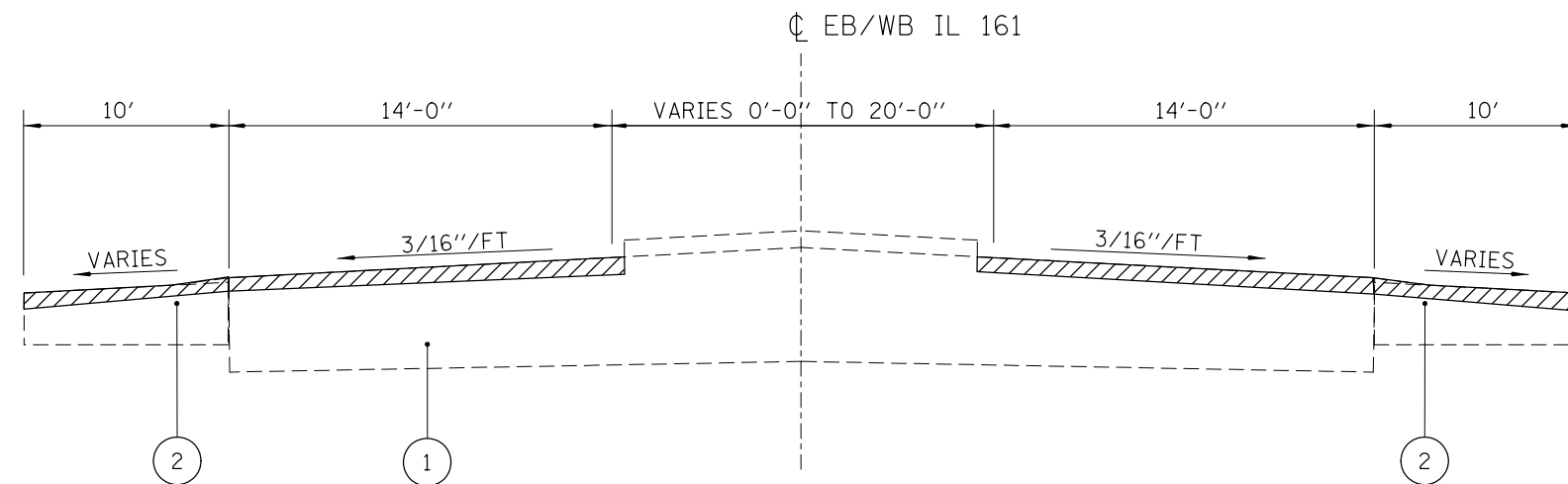
F.A. RTE.	SECTION	COUNTY	TOTAL SHEETS	SHEET NO.
*	124, 125RS-1	ST. CLAIR	29	7
CONTRACT 76H01				
ILLINOIS FED. AID PROJECT				



IL 161 EB/WB TYPICAL SECTION  
 MILE STATION 0.0 TO 0.668  
 MILE STATION 0.944 TO 2.779  
 MILE STATION 3.244 TO 4.179



IL 161 EB/WB TYPICAL SECTION  
 MILE STATION 0.668 TO 0.944



IL 161 EB/WB TYPICAL SECTION  
 MILE STATION 2.779 TO 3.244

LEGEND

- ① EXISTING PAVEMENT
- ② EXISTING BITUMINOUS SHOULDER
- ③ EXISTING AGGREGATE SHOULDERS
- ④ PROPOSED BITUMINOUS MATERIALS (TACK COAT)
- ⑤ PROPOSED LEVEL BINDER, 3/4"
- ⑥ PROPOSED SURFACE COURSE, 1/2"
- ⑦ PROPOSED HMA SHOULDER, 2 1/4"
- ⑧ PROPOSED LONGITUDINAL JOINT SEALANT
- ⑨ PROPOSED THERMOPLASTIC PAVEMENT MARKING
- ⑩ PROPOSED SHOULDER RUMBLE STRIPS, 8 INCH

HMA SURFACE REMOVAL, 2"

\* FAP 805 / FAU 9177

FILE NAME =	USER NAME = CoppemolPE	DESIGNED -	REVISED -
pw:\IL084EB\INTEG\Illinois.gov\PWIDOT\Documents\DOT Offices\District 8\Projects\D876H01\CADData\CADsheets\0876H01\0876H01.dgn		CHECKED -	REVISED -
		DATE -	REVISED -
Default	PLOT DATE = 3/2/2018		

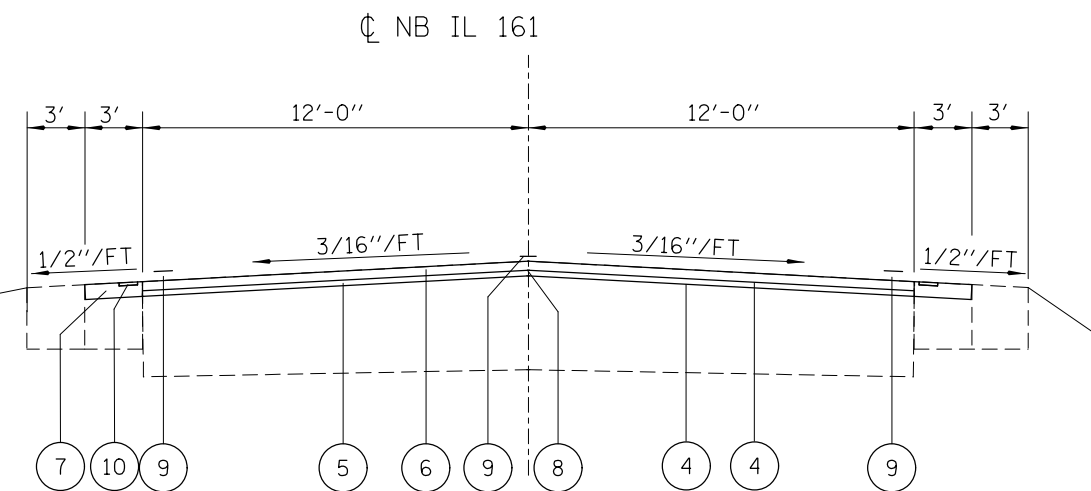
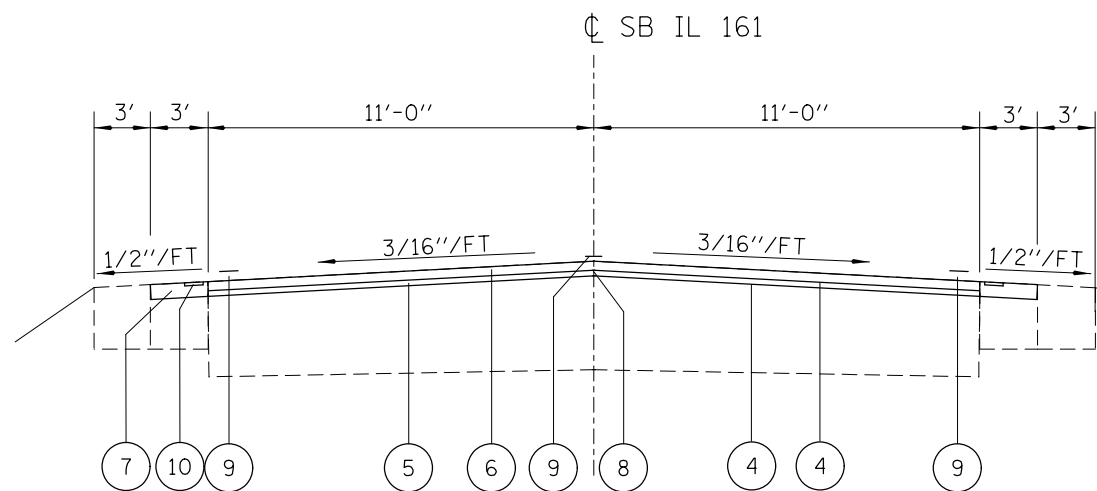
STATE OF ILLINOIS  
 DEPARTMENT OF TRANSPORTATION

EXISTING TYPICAL SECTIONS

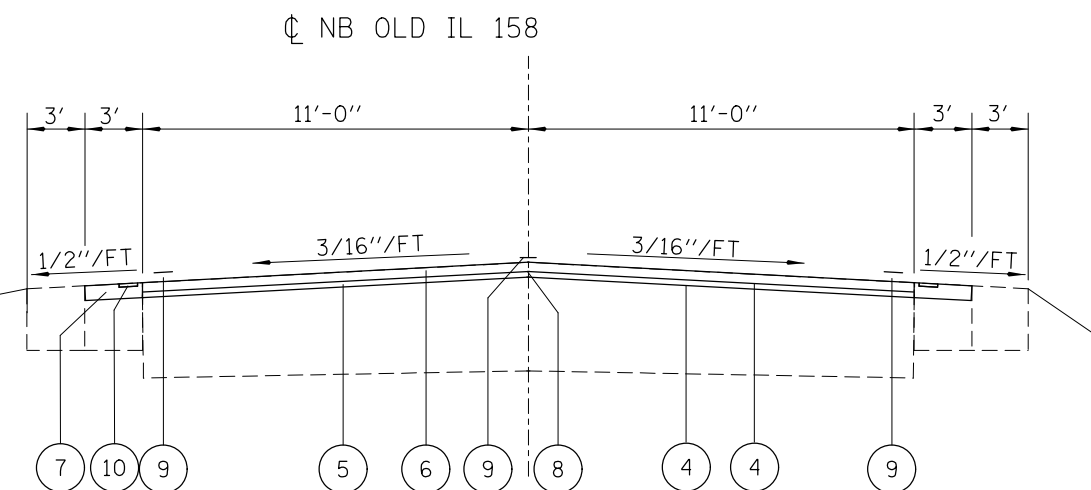
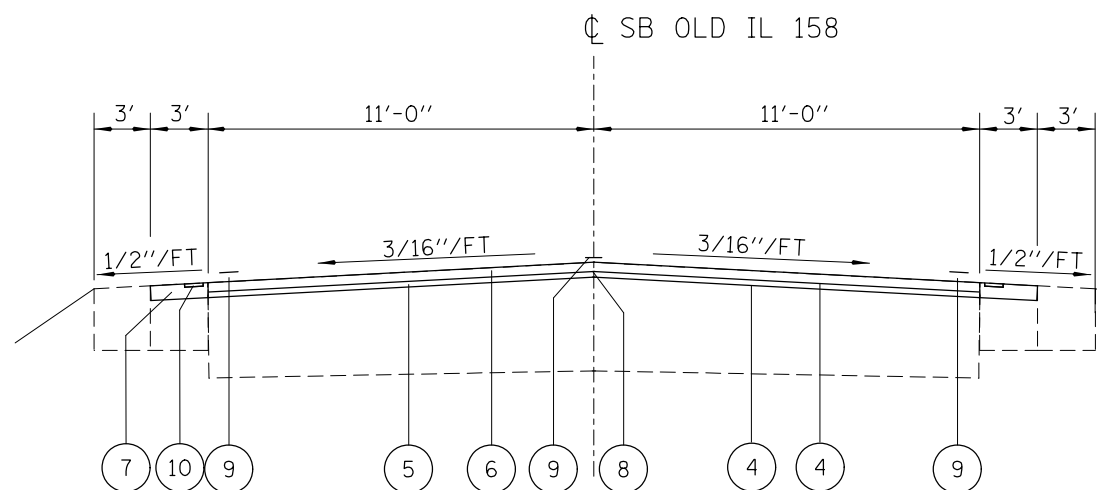
SCALE: SHEET 2 OF 4 SHEETS STA. TO STA.

F.A. RTE.	SECTION	COUNTY	TOTAL SHEETS	SHEET NO.
*	124, 125RS-1	ST. CLAIR	29	8
CONTRACT NO. 76H01				
ILLINOIS		FED. AID PROJECT		





IL 161 NB/SB TYPICAL SECTION  
MILE STATION 0.0 TO 0.49



OLD IL 158 TYPICAL SECTION  
MILE STATION 0.49 TO 0.93

LEGEND

- ① EXISTING PAVEMENT
- ② EXISTING BITUMINOUS SHOULDER
- ③ EXISTING AGGREGATE SHOULDERS
- ④ PROPOSED BITUMINOUS MATERIALS (TACK COAT)
- ⑤ PROPOSED LEVEL BINDER, 3/4"
- ⑥ PROPOSED SURFACE COURSE, 1/2"
- ⑦ PROPOSED HMA SHOULDER, 2 1/4"
- ⑧ PROPOSED LONGITUDINAL JOINT SEALANT
- ⑨ PROPOSED THERMOPLASTIC PAVEMENT MARKING
- ⑩ PROPOSED SHOULDER RUMBLE STRIPS, 8 INCH

\* FAP 805 / FAU 9177

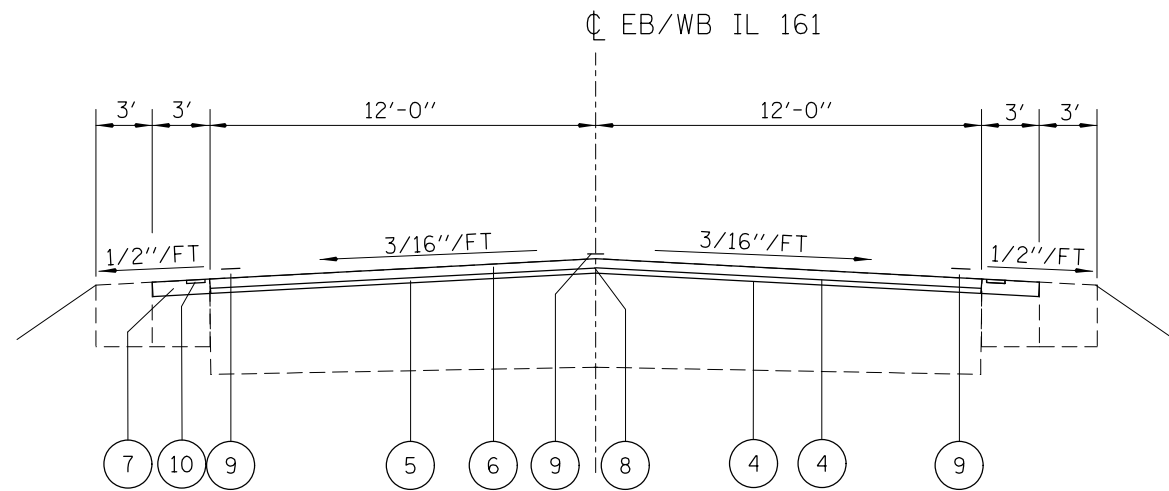
FILE NAME =	USER NAME = CoppemolPE	DESIGNED -	REVISED -
p:\01\04EB\INTEGR\Illinois.gov\PWIDOT\Documents\DOT\Office\District 8\Projects\124\125RS-1\CADD\Drawings\CD\Sheets\124\125RS-1\CD\Sheets\124\125RS-1.dwg		DRAWN -	REVISED -
Default	PLOT SCALE = 100.0000' / in.	CHECKED -	REVISED -
	PLOT DATE = 3/2/2018	DATE -	REVISED -

**STATE OF ILLINOIS**  
**DEPARTMENT OF TRANSPORTATION**

**PROPOSED TYPICAL SECTIONS**

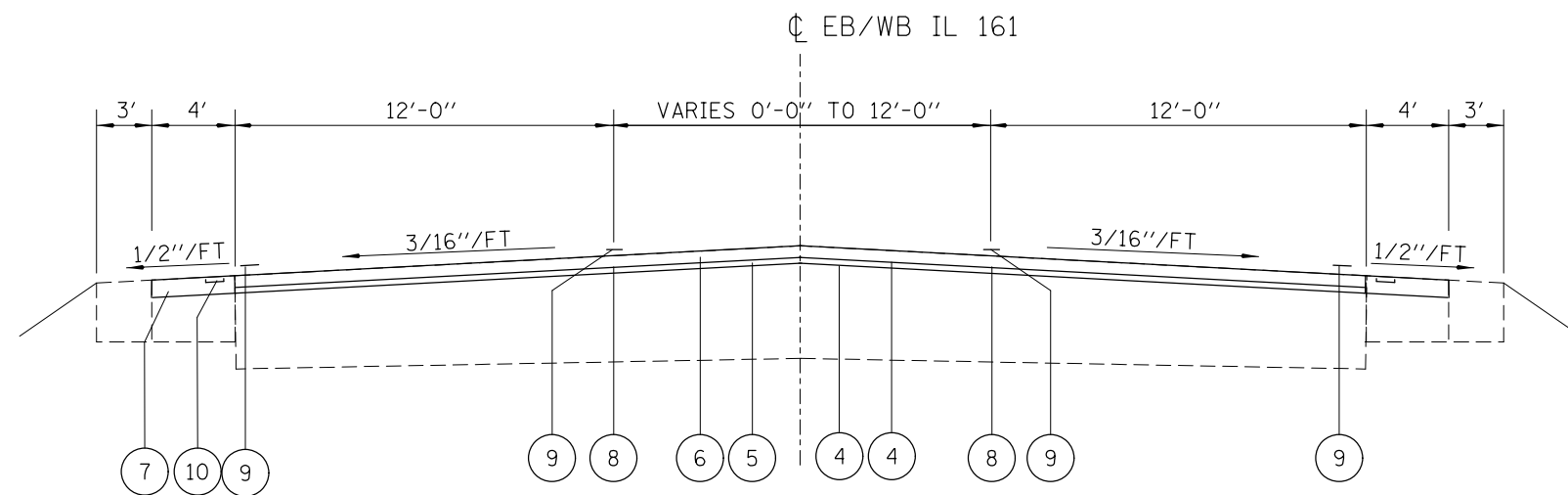
SCALE: SHEET 3 OF 4 SHEETS STA. TO STA.

F.A. * RTE.	SECTION	COUNTY	TOTAL SHEETS	SHEET NO.
	124, 125RS-1	ST. CLAIR	29	9
		CONTRACT NO.		76H01
		ILLINOIS		FED. AID PROJECT



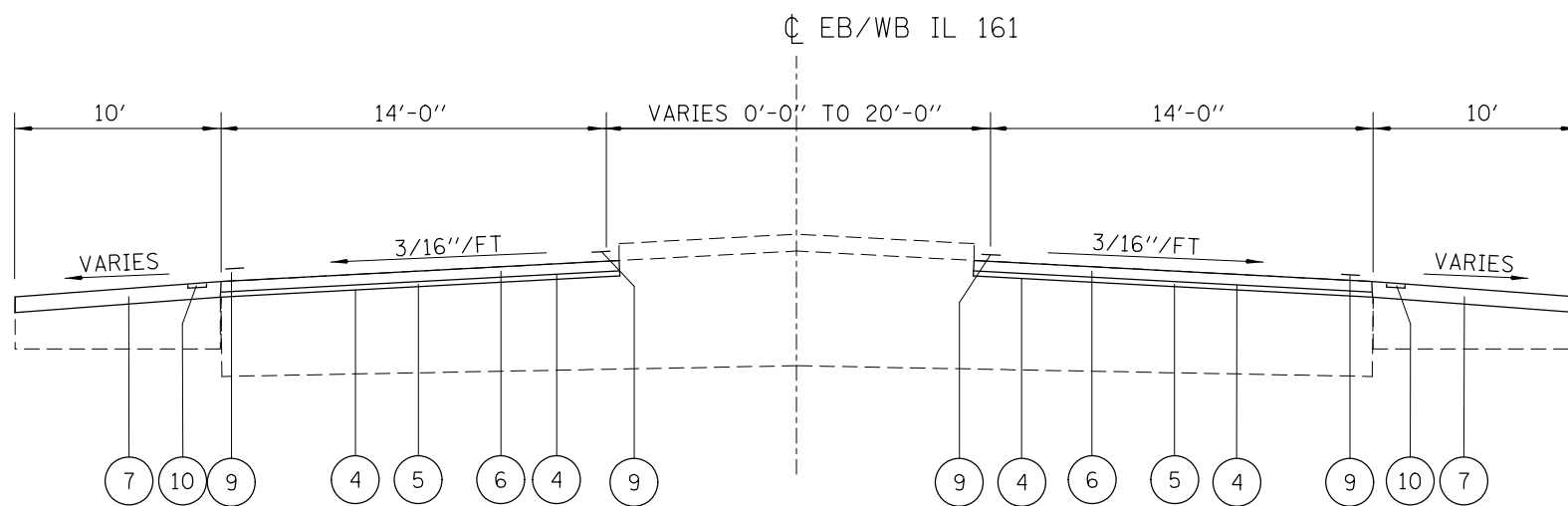
IL 161 EB/WB TYPICAL SECTION

MILE STATION 0.0 TO 0.668  
 MILE STATION 0.944 TO 2.779  
 MILE STATION 3.244 TO 4.179



IL 161 EB/WB TYPICAL SECTION

MILE STATION 0.668 TO 0.944



IL 161 EB/WB TYPICAL SECTION

MILE STATION 2.779 TO 3.244

LEGEND

- ① EXISTING PAVEMENT
- ② EXISTING BITUMINOUS SHOULDER
- ③ EXISTING AGGREGATE SHOULDERS
- ④ PROPOSED BITUMINOUS MATERIALS (TACK COAT)
- ⑤ PROPOSED LEVEL BINDER, 3/4"
- ⑥ PROPOSED SURFACE COURSE, 1 1/2"
- ⑦ PROPOSED HMA SHOULDER, 2 1/4"
- ⑧ PROPOSED LONGITUDINAL JOINT SEALANT
- ⑨ PROPOSED THERMOPLASTIC PAVEMENT MARKING
- ⑩ PROPOSED SHOULDER RUMBLE STRIPS, 8 INCH

\* FAP 805 / FAU 9177

FILE NAME =	USER NAME = CoppemolPE	DESIGNED -	REVISED -	<b>STATE OF ILLINOIS DEPARTMENT OF TRANSPORTATION</b>	<b>PROPOSED TYPICAL SECTIONS</b>			F.A. * RTE.	SECTION	COUNTY	TOTAL SHEETS	SHEET NO.	
pw:\IL084EB\INTEG\Illinois.gov\PWIDOT\Documents\DOT Offices\District 8\Projects\D876H01\CADDData\CADsheets\D876H01\Drawings\		CHECKED -	REVISED -		SCALE:	SHEET 4	OF 4	SHEETS	STA.	TO STA.	124, 125RS-1	29	10
Default		DATE -	REVISED -							CONTRACT NO.	76H01		
										ILLINOIS	FED. AID PROJECT		

IL 161 / OLD IL 158 NB RESURFACING SCHEDULE (RESURFACING 1 OF 3)																		
MILE STATION			LENGTH	PAVEMENT WIDTH			PAVEMENT AREA	SHOULDER WIDTH		SHOULDER AREA	HMA SURFACE REMOVAL, 2"	BITUMINOUS MATERIALS (TACK COAT)	LEVELING BINDER (MACHINE METHOD), IL-9.5FG, N70 3/4"	HOT MIX ASPHALT SURFACE COURSE, MIX "D", N70 1 1/2"	LONGITUDINAL JOINT SEALANT	HOT MIX ASPHALT SHOULDERS, 2 1/4"***	SHOULDER RUMBLE STRIPS, 8 INCH	
				CONSTANT	VARIES			INSIDE	OUTSIDE									
			FOOT	FOOT	FOOT	FOOT	SQ YD	FOOT	FOOT	SQ YD	SQ YD	POUND	TON	TON	TON	FOOT	TONS	FOOT
0.000	TO	0.368	1942.8	24.0			5181	3.0	3.0	1295	6476	3497.1	217.6	435.2	1943	163	3886	
0.368	TO	0.408	211.0		24.0	36.0	704	3.0	4.0	164	868	475.2	29.6	59.2	422	21	422	
0.408	TO	0.443	186.2		36.0	48.0	869	4.0	4.0	166	1035	586.6	36.5	73	559	21	373	
0.443	TO	0.464	107.5	48.0			574	4.0	4.0	96	670	387.5	24.2	48.3	323	12	215	
0.464	TO	0.519	293.8		*		1742		*	322	2064	1175.9	73.2	146.4	1332	41	355	
0.519	TO	0.787	1412.4	22.0			3453	3.0	3.0	942	4395	2330.8	145.1	290.1	1413	119	2825	
0.787	TO	0.805	97.8		22.0	34.0	305	4.0	3.0	76	381	205.9	12.9	25.7	196	10	196	
0.805	TO	0.825	104.1	34.0			394	4.0	3.0	81	475	266.0	16.6	33.1	209	10	209	
0.825	TO	0.840	80.4		*		592		*	24	616	399.6	24.9	49.8	161	3	81.0	
0.840	TO	0.849	47.3		34.0	22.0	148	4.0	3.0	37	185	99.9	6.3	12.5	95	5	95	
0.849	TO	0.935	455.8	22.0			1115	3.0	3.0	304	1419	752.7	46.9	93.7	456	38	912	
										SUBTOTAL 1 OF 3	18582	10177	634	1267	7109	440	9569	

\* SEE INTERSECTION DETAILS  
 \*\*\* REDUCED FOR INCIDENTAL AT ENTRANCES

IL 161 / OLD IL 158 SB RESURFACING SCHEDULE (RESURFACING 2 OF 3)																		
MILE STATION			LENGTH	PAVEMENT WIDTH			PAVEMENT AREA	SHOULDER WIDTH		SHOULDER AREA	HMA SURFACE REMOVAL, 2"	BITUMINOUS MATERIALS (TACK COAT)	LEVELING BINDER (MACHINE METHOD), IL-9.5FG, N70 3/4"	HOT MIX ASPHALT SURFACE COURSE, MIX "D", N70 1 1/2"	LONGITUDINAL JOINT SEALANT	HOT MIX ASPHALT SHOULDERS, 2 1/4"***	SHOULDER RUMBLE STRIPS, 8 INCH	
				CONSTANT	VARIES			INSIDE	OUTSIDE									
			FOOT	FOOT	FOOT	FOOT	SQ YD	FOOT	FOOT	SQ YD	SQ YD	POUND	TON	TON	TON	FOOT	TONS	FOOT
0.000	TO	0.452	2388.2	22.0			5998	3.0	3.0	1753	7751	4048.7	252	503.9	2389	221	4777	
0.452	TO	0.461	44.0	22.0			108	3.0	4.0	35	143	72.9	4.6	9.1	44	4	88	
0.461	TO	0.493	172.1		*		925.0		*	12	937	624.4	38.9	77.7	344	2	0	
0.493	TO	0.564	373.0	34.0			1410	4.0	4.0	332	1742	951.8	59.3	118.5	746	42	746	
0.564	TO	0.589	134.4		34.0	22.0	419	4.0	4.0	120	539	282.9	17.6	35.2	269	15	269	
0.589	TO	0.796	1089.4	22.0			2663	3.0	3.0	727	3390	1797.6	111.9	223.7	1090	92	2179	
0.796	TO	0.834	201.3		*		3271		*	53	3324	2208.0	137.4	274.8	202	7	0	
0.834	TO	0.877	230.2		34.0	22.0	717	3.0	4.0	180	897	484.0	30.2	60.3	461	23	461	
0.877	TO	0.935	302.8	22.0			741	3.0	3.0	202	943	500.2	31.2	62.3	303	25	606	
										SUBTOTAL 2 OF 3	19666	10971	683	1366	5848	412	9126	

\* SEE INTERSECTION DETAILS  
 \*\*\* REDUCED FOR INCIDENTAL AT ENTRANCES

\*\* FAP 805 / FAU 9177

FILE NAME =	USER NAME = CoppemolPE	DESIGNED -	REVISED -	<b>STATE OF ILLINOIS DEPARTMENT OF TRANSPORTATION</b>	<b>SCHEDULE OF QUANTITIES</b>				F.A. **	SECTION	COUNTY	TOTAL SHEETS	SHEET NO.
pw:\IL084EBD\INTEG\Illinois.gov\PWIDOT\Documents\DOT Offices\District 8\Projects\0876H01\CADData\CADsheets\0876H01\Drawings\0876H01.dgn		CHECKED -	REVISED -		SCALE:	SHEET 1	OF 9	SHEETS	STA.	TO STA.	ST. CLAIR	29	11
Default		DATE -	REVISED -		76H01								
					ILLINOIS FED. AID PROJECT								

IL 161 EB/WB RESURFACING SCHEDULE (RESURFACING 3 OF 3)																	
MILE STATION			LENGTH	PAVEMENT WIDTH			PAVEMENT AREA	SHOULDER WIDTH		SHOULDER AREA	HMA SURFACE REMOVAL, 2"	BITUMINOUS MATERIALS (TACK COAT)	LEVELING BINDER (MACHINE METHOD), IL-9.5FG, N70 3/4"	HOT MIX ASPHALT SURFACE COURSE, MIX "D", N70 1 1/2"	LONGITUDINAL JOINT SEALANT	HOT MIX ASPHALT SHOULDERS, 2 1/4"	SHOULDER RUMBLE STRIPS, 8 INCH
				CONSTANT	VARIES			EB	WB								
			FOOT	FOOT	FROM	TO	SQ YD	FOOT	FOOT	SQ YD	SQ YD	POUND	TON	TON	FOOT	TONS	FOOT
0.000	TO	0.035	184.5	OMIT INTERSECTION FROM THIS SCHEDULE, SEE OLD IL 161 / OLD IL 158 INTERSECTION RESURFACING DETAIL													
0.035	TO	0.065	160.0	48.0			854	4.0	4.0	143	997	576.5	35.9	71.8	480	18	320
0.065	TO	0.151	452.6		48.0	12.0	1509	4.0	4.0	403	1912	1018.6	63.4	126.8	906	51	906
0.151	TO	0.668	2732.7	24.0			7288	3.0	3.0	1822	9110	4919.4	306.1	612.2	2733	230	5466
0.668	TO	0.764	503.3		24.0	36.0	1678	3.0	3.0	336	2014	1132.7	70.5	141	1007	42	1007
0.764	TO	0.812	254.2	36.0			1017	3.0	3.0	170	1187	686.5	42.8	85.5	509	21	509
0.812	TO	0.849	195.2	36.0			781	3.0	0.0	66	847	527.2	32.9	65.7	391	8	196
0.849	TO	0.944	500.0		36.0	24.0	1667	3.0	3.0	334	2001	1125.3	70.1	140.1	1000	42	1000
0.944	TO	1.286	1808.3	24.0			4823	3.0	3.0	1206	6029	3255.6	202.6	405.2	1809	152	3617
1.286	TO	1.311	130.5	24.0			348	3.0	0.0	44	392	234.9	14.7	29.3	131	6	131
1.311	TO	1.648	1779.7	24.0			4746	3.0	3.0	1187	5933	3203.6	199.4	398.7	1780	150	3560
1.648	TO	1.672	126.3	BRIDGE OMISSION SN 082-0094													
1.672	TO	2.085	2180.2	24.0			5814	3.0	3.0	1454	7268	3924.5	244.2	488.4	2181	183	4361
2.085	TO	2.087	12.9	24.0			35	3.0	0.0	5	40	23.7	1.5	3	13	1	13
2.087	TO	2.093	29.9	24.0			80	0.0	0.0	0	80	54.0	3.4	6.8	30	0	0
2.093	TO	2.190	512.5	BRIDGE OMISSION SN 082-0095													
2.190	TO	2.197	35.8	24.0			96	0.0	0.0	0	96	64.8	4.1	8.1	36	0	0
2.197	TO	2.369	909.3	24.0			2425	3.0	3.0	607	3032	1636.9	101.9	203.7	910	76	1819
2.369	TO	2.429	319.9	24.0			854	0.0	3.0	107	961	576.5	35.9	71.8	320	13	320
2.429	TO	2.779	1844.8	24.0			4920	3.0	3.0	1230	6150	3321.0	206.7	413.3	1845	155	3690
2.779	TO	2.864	449.2	24.0			1198	10.0	10.0	999	2197	808.7	50.4	100.7	450	126	899
2.864	TO	2.911	250.0		24.0	38.0	862	10.0	10.0	556	1418	581.9	36.3	72.5	250	70	500
2.911	TO	2.980	363.1		38.0	28.0	1332	10.0	10.0	807	2139	899.1	56	111.9	364	102	727
2.980	TO	3.035	289.2		28.0	42.0	1125	10.0	10.0	643	1768	759.4	47.3	94.5	290	81	579
3.035	TO	3.077	223.9	42.0			1045	10.0	10.0	498	1543	705.4	43.9	87.8	224	63	448
3.077	TO	3.093	85.1	42.0			398	0.0	0.0	0	398	268.7	16.8	33.5	86	0	0
3.093	TO	3.132	205.1	46.0			1049	0.0	0.0	0	1049	708.1	44.1	88.2	411	0	0
3.132	TO	3.244	589.4		46.0	24.0	2293	10.0	10.0	1310	3603	1547.8	96.4	192.7	1179	165	1179
3.244	TO	3.283	209.6	24.0			559	10.0	10.0	466	1025	377.4	23.5	47	210	59	420
3.283	TO	3.688	2134.2	24.0			5692	3.0	3.0	1423	7115	3842.1	239.1	478.2	2135	179	4269
3.688	TO	3.754	349.8		24.0	36.0	1166	6.0	6.0	467	1633	787.1	49	98	700	59	700
3.754	TO	3.802	255.8		36.0	48.0	1194	6.0	6.0	342	1536	806.0	50.2	100.3	768	43	512
3.802	TO	3.825	122.4	48.0			653	6.0	6.0	164	817	440.8	27.5	54.9	123	21	245
3.825	TO	3.882	300.0	IL 4 INTERSECTION OMISSION SEE CONTRACT 76K41													
3.882	TO	3.975	491.3	36.0			1966	6.0	6.0	656	2622	1327.1	82.6	165.2	983	83	983
3.975	TO	4.041	344.9		36.0	24.0	1150	6.0	6.0	460	1610	776.3	48.3	96.6	690	58	690
4.041	TO	4.179	731.8	24.0			1952	6.0	6.0	976	2928	1317.6	82	164	732	123	1464
* REDUCED FOR INCIDENTAL AT ENTRANCES										SUBTOTAL 3 OF 3	81450	42235	2630	5257	25676	2304	40530
										GRAND TOTAL	119698	63383	3946	7890	38633	3156	59225

\*\* FAP 805 / FAU 9177

FILE NAME =	USER NAME = CoppemolPE	DESIGNED -	REVISED -	<b>STATE OF ILLINOIS DEPARTMENT OF TRANSPORTATION</b>	<b>SCHEDULE OF QUANTITIES</b>				F.A. **	SECTION	COUNTY	TOTAL SHEETS	SHEET NO.
pw:\IL04EB\INTEG\Illinois.gov\PWIDOT\Documents\DOT Offices\District 8\Projects\D876H01\CADData\CADsheets\D876H01\Drawings		CHECKED -	REVISED -		124.125RS-1	ST. CLAIR	29	12					
Default	PLOT SCALE = 100.0000' / in.	DATE -	REVISED -		SCALE:	SHEET 2	OF 9	SHEETS	STA.	TO STA.	76H01		
	PLOT DATE = 3/2/2018				ILLINOIS FED. AID PROJECT								

NB AND SB IL 161 / OLD IL 158 ENTRANCES ( 1 OF 2 )						
MILE STATION	LOCATION	ENTRANCE LENGTH	INCIDENTAL WIDTH	ENTRANCE AREA	INCIDENTAL HOT-MIX ASPHALT SURFACING	BITUMINOUS MATERIALS (TACK COAT)
	NB/SB	FOOT	FOOT	SQ YD	TON	POUND
0.519	SB	75	4	34	4.2	3.9
0.538	SB	50	4	23	2.8	2.6
0.552	SB	50	4	23	2.8	2.6
0.578	SB	115	4	52	6.5	5.9
0.847	SB	40	4	18	2.3	2.1
0.927	NB	40	3	14	1.7	1.6
SUB TOTAL 1 OF 2					20.3	18.7

RAISED MEDIAN MARKERS AND PAINTING SCHEDULE						
LOCATION DESCRIPTION	MILE STATION			PAINT PAVEMENT MARKING CURB, 6" YELLOW	PAINT PAVEMENT MARKING - RAISED MEDIAN YELLOW	CURB REFLECTORS AMBER
		TO		FOOT	SQ FT	EACH
RAISED MEDIAN WEST OF IL 161 / 6TH ST (HARPER RD)	2.910	TO	3.093	110	20	70

EB AND WB IL 161 ENTRANCES ( 2 OF 2 )						
MILE STATION	LOCATION	ENTRANCE LENGTH	INCIDENTAL WIDTH	ENTRANCE AREA	INCIDENTAL HOT-MIX ASPHALT SURFACING	BITUMINOUS MATERIALS (TACK COAT)
	EB/WB	FOOT	FOOT	SQ YD	TON	POUND
0.182	EB	40	3	14	1.7	1.6
0.218	EB	60	3	20	2.6	2.3
0.235	WB	70	3	24	3.0	2.7
0.257	EB	55	3	19	2.4	2.2
0.265	WB	40	3	14	1.7	1.6
0.342	WB	30	3	10	1.3	1.2
0.358	WB	30	3	10	1.3	1.2
0.506	WB	40	3	14	1.7	1.6
0.508	EB	40	3	14	1.7	1.6
0.556	EB	40	3	14	1.7	1.6
0.599	EB	40	3	14	1.7	1.6
0.756	EB	40	3	14	1.7	1.6
0.808	EB	40	3	14	1.7	1.6
0.832	EB	70	3	24	3.0	2.7
0.871	EB	75	3	25	3.2	2.9
0.897	EB	50	3	17	2.1	2.0
0.910	EB	60	3	20	2.6	2.3
0.921	EB	40	3	14	1.7	1.6
0.945	EB	30	3	10	1.3	1.2
0.993	EB	30	3	10	1.3	1.2
1.180	EB	60	3	20	2.6	2.3
1.204	EB	60	3	20	2.6	2.3
1.220	EB	40	3	14	1.7	1.6
2.328	EB	60	3	20	2.6	2.3
2.374	WB	60	3	20	2.6	2.3
2.443	WB	50	3	17	2.1	2.0
2.770	WB	75	3	25	3.2	2.9
3.227	WB	40	3	14	1.7	1.6
3.253	EB	40	3	14	1.7	1.6
3.398	EB	125	3	42	5.3	4.8
3.495	EB	40	3	14	1.7	1.6
3.578	EB	45	3	15	1.9	1.7
3.631	EB	40	3	14	1.7	1.6
3.998	EB	40	3	14	1.7	1.6
4.109	EB	50	3	17	2.1	2.0
SUB TOTAL 2 OF 2					74.6	68.5
GRAND TOTAL					94.9	87.2

\* FAP 805 / FAU 9177

NB AND SB IL 161 / OLD IL 158 TEMPORARY RAMP SCHEDULE ( 1 OF 2 )								
DESCRIPTION	MILE STATION	TEMPORARY RAMP 2"			TEMPORARY RAMP 1.25"			TEMPORARY RAMP
		LENGTH	WIDTH	AREA	LENGTH	WIDTH	AREA	
		FOOT	FOOT	SQ YD	FOOT	FOOT	SQ YD	
BEGINNING OF PROJECT	0.000	6.7	24.0	17.9	4.2	24.0	11.2	29.1
	0.000	6.7	22.0	16.4	4.2	22.0	10.3	26.7
TURNING LANE	0.033	6.7	16.0	12.0	4.2	16.0	7.5	19.5
TURNING LANE	0.048	6.7	85.0	63.3	4.2	85.0	39.7	103.0
STAGING	0.247	6.7	24.0	17.9	4.2	24.0	11.2	29.1
	0.247	6.7	22.0	16.4	4.2	22.0	10.3	26.7
ENTRANCE ON WEST SIDE OF IL 161 / OLD IL 158 INTERSECTION	0.477	2.0	172.0	38.3	2.0	172.0	38.3	76.6
EAST SIDE OF IL 161 / OLD IL 158 INTERSECTION	0.000	6.7	105.0	78.2	4.2	105.0	49.0	127.2
PATRIOT'S DRIVE	0.809	2.0	115.0	25.6	2.0	115.0	25.6	51.2
PATRIOTS DRIVE SB LTL	0.821	6.7	26.0	19.4	4.2	26.0	12.2	31.6
STAGING	0.663	6.7	22.0	16.4	4.2	22.0	10.3	26.7
	0.663	6.7	22.0	16.4	4.2	22.0	10.3	26.7
END OF RESURFACING	0.935	6.7	22.0	16.4	4.2	22.0	10.3	26.7
	0.935	6.7	22.0	16.4	4.2	22.0	10.3	26.7
SUBTOTAL 1 OF 2								627.5

EB AND WB IL 161 TEMPORARY RAMP SCHEDULE ( 2 OF 2 )								
DESCRIPTION	MILE STATION	TEMPORARY RAMP 2"			TEMPORARY RAMP 1.25"			TEMPORARY RAMP
		LENGTH	WIDTH	AREA	LENGTH	WIDTH	AREA	
		FOOT	FOOT	SQ YD	FOOT	FOOT	SQ YD	
IL 161 / OLD IL 158 INTERSECTION	0.010	6.7	105.0	78.2	4.2	105.0	49.0	127.2
HANNAH CHASE LN	0.831	2.0	185.0	41.2	2.0	185.0	41.2	82.4
LTL AT HANNAH CHASE LN	0.831	6.7	75.0	55.9	4.2	75.0	35.0	90.9
CHARLES LN	1.296	2.0	85.0	18.9	2.0	85.0	18.9	37.8
STAGING	1.446	6.7	24.0	17.9	4.2	24.0	11.2	29.1
WEST OF SN 082-0094 BRIDGE OMISSION	1.646	6.7	24.0	17.9	4.2	24.0	11.2	29.1
EAST OF SN 082-0094 BRIDGE OMISSION	1.670	6.7	24.0	17.9	4.2	24.0	11.2	29.1
WEST OF SN 082-0095 BRIDGE OMISSION	2.091	2.0	115.0	25.6	4.2	115.0	53.7	79.3
EAST OF SN 082-0095 BRIDGE OMISSION	2.188	6.7	24.0	17.9	4.2	24.0	11.2	29.1
STAGING	2.338	6.7	24.0	17.9	4.2	24.0	11.2	29.1
N COUNTRY ROAD	2.382	2.0	280.0	62.3	2.0	280.0	62.3	124.6
N COUNTRY ROAD	2.382	2.0	130.0	28.9	2.0	130.0	28.9	57.8
HARPER RD / N 6HT ST	3.101	2.0	250.0	55.6	2.0	250.0	55.6	111.2
HARPER RD / N 6HT ST	3.101	2.0	250.0	55.6	2.0	250.0	55.6	111.2
HARPER RD / N 6HT ST	3.101	2.0	100.0	22.3	2.0	100.0	22.3	44.6
HARPER RD / N 6HT ST	3.101	2.0	100.0	22.3	2.0	100.0	22.3	44.6
STAGING	3.500	6.7	24.0	17.9	4.2	24.0	11.2	29.1
WEST OF IL 4 INTERSECTION OMISSION	3.824	6.7	48.0	35.8	4.2	48.0	22.4	58.2
EAST OF IL 4 INTERSECTION OMISSION	3.881	6.7	36.0	26.8	4.2	36.0	16.8	43.6
END OF RESURFACING	4.179	6.7	22.0	16.4	4.2	22.0	10.3	26.7
SUBTOTAL 2 OF 2								1214.7
GRAND TOTAL								1842.2

GUARDRAIL SCHEDULE								
MILE STATION	LOCATION	GUARDRAIL REMOVAL	STEEL PLATE BEAM GUARDRAIL, TYPE A, 6 FOOT POSTS	STRONG POST GUARDRAIL ATTACHED TO CULVERT	TRAFFIC BARRIER TERMINAL TYPE 1, SPECIAL ( TANGENT )	GUARDRAIL REFLECTORS, TYPE A	TERMINAL MARKER - DIRECT APPLIED	AGGREGATE SHOULDERS ( SPECIAL )*
		FOOT	FOOT	FOOT	EACH	EACH	EACH	SQ YD
0.49 ( SN 082-2003 )	EB	270	175	45	1	6	1	26
	WB	250	175	45	1	6	1	26
TOTAL		520	350	90	2	12	2	52

\* AGGREGATE SHOULDERS (SPECIAL) SHALL BE CONSTRUCTED IN ACCORDANCE WITH HIGHWAY STANDARD 630301. AT THE LOCATIONS SHOWN ABOVE, IT IS ANTICIPATED THAT THE 1:2.5 MAXIMUM SLOPE WILL BE UTILIZED. THE CONTRACTOR SHALL PROVIDE A 1:3 MAXIMUM SLOPE (MEASURED PARALLEL TO THE CL OF THE ROADWAY) ON THE APPROACH AND DEPARTING ENDS OF THE WIDENING.

\*\* FAP 805 / FAU 9177

FILE NAME =	USER NAME = CoppemolPE	DESIGNED -	REVISED -	<b>STATE OF ILLINOIS DEPARTMENT OF TRANSPORTATION</b>	<b>SCHEDULE OF QUANTITIES</b>				F.A. **	SECTION	COUNTY	TOTAL SHEETS	SHEET NO.
pw\01084EB\INTEG\Illinois.gov\PWIDOT\Documents\DOT Offices\District 8\Projects\D876H01\CADData\CADsheets\D876H01\Drawings	DESIGNED -	REVISED -	REVISED -						**	124.125RS-1	ST. CLAIR	29	14
Default	PLOT SCALE = 100.0000' / in.	CHECKED -	REVISED -		SCALE:	SHEET 4	OF 9	SHEETS	STA.	TO STA.	76H01		
	PLOT DATE = 3/2/2018	DATE -	REVISED -								ILLINOIS	FED. AID PROJECT	

NB AND SB IL 161 / OLD IL 158 RASIED REFLECTIVE PAVEMENT MARKERS ( 1 OF 2 )						
MILE STATION	LENGTH	RAISED REFLECTIVE PAVEMENT MARKER REMOVAL	RAISED REFLECTIVE PAVEMENT MARKER			
			ONE-WAY CRYSTAL	ONE-WAY AMBER	TWO-WAY AMBER	
			FOOT	EACH	EACH	EACH
0.000	TO 0.405	2134.2	56	56		
0.405	TO 0.441	190.3	10	10		
0.441	TO 0.465	126.8	10	10		
0.465	TO 0.494	153.6	IL 161 / OLD IL 158 INTERSECTION OMISSION			
0.494	TO 0.563	367.7	21	21		
0.563	TO 0.786	1176.3	30	30		
0.786	TO 0.802	85.2	5	5		
0.802	TO 0.822	106.1	OLD IL 158 / PATRIOT'S DRIVE INT. OMISSION			
0.822	TO 0.841	96.6	5	5		
0.841	TO 0.935	500.4	14	14		
SUBTOTAL 1 OF 2			151	151		151

EB AND WB IL 161 RAISED REFLECTIVE PAVEMENT MARKERS ( 2 OF 2 )						
MILE STATION	LENGTH	RAISED REFLECTIVE PAVEMENT MARKER REMOVAL	RAISED REFLECTIVE PAVEMENT			
			ONE-WAY CRYSTAL	ONE-WAY AMBER	TWO-WAY AMBER	
			FOOT	EACH	EACH	EACH
0.000	TO 0.015	74.0	IL 161 / OLD IL 158 INTERSECTION OMISSION			
0.015	TO 0.067	274.9	32	16		16
0.067	TO 0.147	424.0	22	22		
0.147	TO 0.170	120.0	6			6
0.170	TO 0.646	2517.5	32			32
0.646	TO 0.669	120.0	6			6
0.669	TO 0.800	689.0	35	35		
0.800	TO 0.825	136.1	11	4		7
0.825	TO 0.839	73.4	INTERSECTION OMISSION			
0.839	TO 0.931	482.4	31	31		
0.931	TO 0.953	120.0	6			6
0.953	TO 1.648	3666.4	46			46
1.648	TO 1.672	126.9	BRIDGE OMISSION			
1.672	TO 2.093	2221.9	28			28
2.093	TO 2.190	513.7	BRIDGE OMISSION			
2.190	TO 2.838	3420.8	43			43
2.838	TO 2.860	120.0	6			6
2.860	TO 2.911	265.4	14	14		
2.911	TO 3.002	480.6	RAISED MEDIAN OMISSION			
3.002	TO 3.093	483.1	13	13		
3.093	TO 3.110	88.3	INTERSECTION OMISSION			
3.110	TO 3.152	222.6	28	14		14
3.152	TO 3.244	484.8	25	25		
3.244	TO 3.267	120.0	6			6
3.267	TO 3.665	2103.0	27			27
3.665	TO 3.688	120.0	6			6
3.688	TO 3.802	602.7	31	31		
3.802	TO 3.848	243.2	26	13		13
3.848	TO 3.863	78.4	INTERSECTION OMISSION			
3.863	TO 3.921	305.9	27	9		18
3.921	TO 4.040	632.8	32	32		
4.040	TO 4.063	120.0	6			6
4.063	TO 4.179	614.3	8			8
SUBTOTAL 2 OF 2			553	56	203	294
GRAND TOTAL			705	705		

BUTT JOINTS				
DESCRIPTION	MILE STATION	LENGTH	WIDTH	HOT-MIX ASPHALT SURFACE REMOVAL - BUTT JOINT
		FEET	FEET	
NB IL 161 PROJECT START	0.000	30.0	10.0	33.4
SB IL 161 PROJECT START	0.000	28.0	10.0	31.2
NB OLD IL 158 PROJECT END	0.953	28.0	10.0	31.2
SB OLD IL 158 PROJECT END	0.953	28.0	10.0	31.2
EB / WB IL 161 START	0.065	56.0	10.0	62.3
BRIDGE OMISSION	1.648	30.0	10.0	33.4
BRIDGE OMISSION	2.093	30.0	10.0	33.4
IL 4 OMISSION	3.825	56.0	10.0	62.3
IL 4 OMISSION	3.882	44.0	10.0	48.9
EB / WB IL 161 END	4.179	30.0	10.0	33.4
TOTAL				400.7

\* FAP 805 / FAU 9177





EB AND WB IL 161 PAVEMENT MARKING SCHEDULE ( 2 OF 2 )

MILE STATION	LENGTH FOOT	THERMOPLASTIC PAVEMENT MARKING & TEMPORARY PAVEMENT MARKING						TEMPORARY PAVEMENT MARKING REMOVAL SQ FT	SHORT TERM PAVEMENT MARKING			SHORT TERM PAVEMENT MARKING REMOVAL SQ FT
		4" YELLOW SOLID	4" YELLOW SKIP DASH	4" WHITE SOLID	12" YELLOW SOLID	24" WHITE SOLID	LETTERS & SYMBOLS		4" WHITE SKIP DASH	4" WHITE DIAGONALS	4" YELLOW SKIP DASH	
0.014 TO 0.066	275.2	551		1244		44	78.4	765	189	56	51	99
0.066 TO 0.151	449.3	1798		899	151			1050		72	327	133
0.151 TO 0.174	120	240		240				160			44	15
0.174 TO 0.259	449.1	450	113	899				488			82	28
0.259 TO 0.646	2043.3		511	4087				1533			372	124
0.646 TO 0.669	120	240		240				160			44	15
0.669 TO 0.799	688.3	2754		1377	153			1530		111	501	204
0.799 TO 0.812	70.8	142		213			15.6	134	13	12	26	17
0.812 TO 0.825	66.3	133		133			15.6	105	13	6	25	15
0.825 TO 0.838	70.8			71				24		6		2
0.838 TO 0.844	28.4	114		29	15			63		3	21	8
0.844 TO 0.931	462.4	1850		925	119			1044		74	337	137
0.931 TO 0.982	269.6	540		540				360			99	33
0.982 TO 1.074	484.1		122	969				364			89	30
1.074 TO 1.193	629.4	630	158	1259				683			115	39
1.193 TO 1.247	285.8	72	572	572				215			52	18
1.247 TO 1.257	48.4	13	49	49				21			9	3
1.257 TO 1.286	154.2	39	309	309				116			29	10
1.286 TO 1.307	112.3	113	29	113				85			21	7
1.307 TO 1.403	505.1	506	127	1011				548			92	31
1.403 TO 1.647	1291.4		323	2583				969			235	79
1.647 TO 1.671	126.2											
1.671 TO 2.092	2222.1		556	4445				1667			405	135
2.092 TO 2.189	513.6											
2.189 TO 2.368	944.2		237	1889				709			172	58
2.368 TO 2.424	294.4		74	295				123			54	18
2.424 TO 2.794	1955.1		489	3911				1467			356	119
2.794 TO 2.837	226.7	227	57	454				246		37	42	27
2.837 TO 2.860	120	240		240				160		20	44	22
2.860 TO 2.909	258.2	1033		517	55			572		42	188	77
2.909 TO 2.937	151	453		302	18			270		25	83	36
2.937 TO 2.984	246.3	493		493				329		40	90	44
2.984 TO 3.084	528.4	1057		1057	243			948		79	193	91
3.084 TO 3.091	36.6	74		37	60			97				0
3.091 TO 3.108	88.8			89				30				0
3.108 TO 3.113	29.8	60		148				70	11		11	8
3.113 TO 3.127	74.7	150		225			15.6	141	28	12	28	23
3.127 TO 3.150	119.1	239		477			31.2	270	44	20	44	36
3.150 TO 3.229	419	1676		838	109			947		68	305	125
3.229 TO 3.264	184	736		368				368		30	134	55
3.264 TO 3.367	545.9	546	137	1092				592			100	34
3.367 TO 3.600	1226.7		307	2454				921			224	75
3.600 TO 3.665	341.9	342	86	684				371			63	21
3.665 TO 3.687	120	120		240				120			44	15
3.687 TO 3.707	106	424		212				212		17	78	32
3.707 TO 3.790	435.2	1741		871	205			1076		70	317	129
3.790 TO 3.801	60.6	243		122				122		10	45	19
3.801 TO 3.826	131.8	264		528			31.2	296	48	22	48	40
3.826 TO 3.882	296.9	388		1143		103	46.8	764	158		75	78
3.882 TO 3.920	199.5	399		599			31.2	364	37	32	73	48
3.920 TO 3.931	58.5	234		117				117		10	43	18
3.931 TO 4.030	519.3	2078		1039	257			1296		84	378	154
4.030 TO 4.040	54.9	220		110				110		9	20	10
4.040 TO 4.179	734.3	1469		1469				980		118	134	84
SUBTOTAL 2 OF 2		24967	3450	44227	1385	147	265.6	26172	541	1085	6362	2678
			72644							7988		
GRAND TOTAL			95514		1385	323	452.8	34340		11513		3853

**STATE OF ILLINOIS  
DEPARTMENT OF TRANSPORTATION**

**SCHEDULE OF QUANTITIES**

SCALE: SHEET 7 OF 9 SHEETS STA. TO STA.

\* FAP 805 / FAU 9177

FILE NAME =	USER NAME = CoppemolPE	DESIGNED -	REVISED -	<p align="center"><b>STATE OF ILLINOIS DEPARTMENT OF TRANSPORTATION</b></p>	<p align="center"><b>SCHEDULE OF QUANTITIES</b></p>	FA RTE. *	SECTION	COUNTY	TOTAL SHEETS	SHEET NO.	
Default		CHECKED -	REVISED -			*	124.125RS-1	ST. CLAIR	29	17	
		DATE -	REVISED -			76H01					
						ILLINOIS	FED. AID PROJECT				

SOUTHBOUND IL 161 / OLD IL 158 PAVEMENT PATCHING ( 1 OF 3 )								
MILE STATION	DRIVING LANE			PASSING LANE			13"	
	LENGTH	WIDTH	AREA	LENGTH	WIDTH	AREA	TYPE II	TYPE III
	FOOT	FOOT	SQ YD	FOOT	FOOT	SQ YD	SQ YD	SQ YD
0.13	6	12	8.0	6	12	8.0	16	
0.13	12	12	16.0	12	12	16.0		32
0.23	6	12	8.0	6	12	8.0	16	
0.63				4	12	5.4	5.4	
0.63				4	12	5.4	5.4	
0.73				4	12	5.4	5.4	
0.83	4	12	5.4	4	12	5.4	10.8	
0.83	4	12	5.4	4	12	5.4	10.8	
0.83	4	12	5.4	4	12	5.4	10.8	
0.83	4	12	5.4	4	12	5.4	10.8	
0.83	6	12	8.0	6	12	8.0	16	
0.93	4	12	5.4	4	12	5.4	10.8	
0.93	6	12	8.0	6	12	8.0	16	
0.93	4	12	5.4	4	12	5.4	10.8	
0.93	4	12	5.4	4	12	5.4	10.8	
0.93	4	12	5.4	4	12	5.4	10.8	
0.93	4	12	5.4	4	12	5.4	10.8	
0.93	4	12	5.4	4	12	5.4	10.8	
0.93	4	12	5.4	4	12	5.4	10.8	
0.93	4	12	5.4	4	12	5.4	10.8	
0.93	4	12	5.4	4	12	5.4	10.8	
TOTAL							209.8	32.0
ANTICIPATED FAILURES ( 15% )							31.5	4.8
SUB TOTAL 1 OF 3							241.3	36.8

NORTHBOUND IL 161 / OLD IL 158 PAVEMENT PATCHING ( 2 OF 3 )								
MILE STATION	DRIVING LANE			PASSING LANE			13"	
	LENGTH	WIDTH	AREA	LENGTH	WIDTH	AREA	TYPE II	TYPE III
	FOOT	FOOT	SQ YD	FOOT	FOOT	SQ YD	SQ YD	SQ YD
	6	12	8.0				8	
	12	12	16.0	10	12	13.4	13.4	16
	4	12	5.4				5.4	
	4	12	5.4				5.4	
0.1	4	12	5.4				5.4	
0.3				20	6	13.4	13.4	
0.4	10	12	13.4	10	12	13.4	26.8	
0.6				6	12	8.0	8	
0.7	4	12	5.4	6	12	8.0	13.4	
0.7	10	12	13.4	10	12	13.4	26.8	
0.7				4	12	5.4	5.4	
0.7				4	12	5.4	5.4	
0.7	4	12	5.4	4	12	5.4	10.8	
TOTAL							147.6	16
ANTICIPATED FAILURES ( 15% )							22.1	2.4
SUB TOTAL 2 OF 3							169.7	18.4

\* FAP 805 / FAU 9177

FILE NAME =	USER NAME = CoppemolPE	DESIGNED -	REVISED -	<b>STATE OF ILLINOIS</b> <b>DEPARTMENT OF TRANSPORTATION</b>	<b>SCHEDULE OF QUANTITIES</b>	F.A. * RTE.	SECTION	COUNTY	TOTAL SHEETS	SHEET NO.	
pw:\IL04EB\INTEG\Illinois.gov\PWIDOT\Documents\DOT Offices\District 8\Projects\0876\H01\CADData\CADsheets\0876\Browne\dwgn		DRAWN	REVISED -			* -	124.125RS-1	ST. CLAIR	29	18	
PLOT SCALE = 100.0000' / in.	CHECKED -	REVISED -				76H01					
Default	DATE -	REVISED -				SCALE:	SHEET 8	OF 9	SHEETS	STA.	TO STA.

EB AND WB IL 161 PAVEMENT PATCHING ( 30F 3)

MILE STATION	WB			EB			13"		
	LENGTH	WIDTH	AREA	LENGTH	WIDTH	AREA	TYPE II	TYPE III	TYPE IV
	FOOT	FOOT	SQ YD	FOOT	FOOT	SQ YD	SQ YD	SQ YD	SQ YD
0.2	6	12	8.0	6	12	8.0	16		
0.2	6	12	8.0	6	12	8.0	16		
0.3	4	12	5.4	4	12	5.4	10.8		
0.3	4	12	5.4	4	12	5.4	10.8		
0.3	4	12	5.4	4	12	5.4	10.8		
0.3	4	12	5.4	4	12	5.4	10.8		
0.3	4	12	5.4	4	12	5.4	10.8		
0.4	4	12	5.4	4	12	5.4	10.8		
0.4	6	12	8.0	4	12	5.4	13.4		
0.4	10	12	13.4	10	12	13.4	26.8		
0.5	8	12	10.7				10.7		
0.6	4	12	5.4	4	12	5.4	10.8		
0.6	4	12	5.4	4	12	5.4	10.8		
0.7	6	12	8.0	6	12	8.0	16		
0.7	4	14	6.3	4	14	6.3	12.6		
0.8				6	24	16.0		16	
0.9	6	12	8.0	6	17	11.4	19.4		
1.0	4	12	5.4	4	12	5.4	10.8		
1.0	4	12	5.4				5.4		
1.0	4	12	5.4				5.4		
1.0	12	12	16.0					16	
1.1	4	12	5.4				5.4		
1.1	6	12	8.0	4	12	5.4	13.4		
1.1	4	12	5.4	4	12	5.4	10.8		
1.2	4	12	5.4				5.4		
1.2	4	12	5.4				5.4		
1.2	4	12	5.4	4	12	5.4	10.8		
1.2	4	12	5.4				5.4		
1.2	4	12	5.4	4	12	5.4	10.8		
1.3	4	12	5.4	6	12	8.0	8		
1.3				8	12	10.7	10.7		
1.3	10	12	13.4				13.4		
1.4				25	6	16.7		16.7	
1.6	30	6	20.0					20	
1.9	4	12	5.4				5.4		
1.9	20	12	26.7					5.4	26.7
2.0	4	12	5.4	4	12	5.4	10.8		
2.0	6	12	8.0				8		
2.4				16	12	21.4		21.4	
2.6	4	12	5.4	4	12	5.4	10.8		
2.8	12	6	8.0	12	6	8.0	16		
2.9	12	12	16.0					16	
3.0	4	12	5.4				5.4		
3.1	4	12	5.4				5.4		
3.1	4	12	5.4				5.4		
3.1	8	12	10.7				10.7		
3.2	4	12	5.4				5.4		
3.2	4	12	5.4				5.4		
3.2				4	12	5.4	5.4		
3.2	6	12	8.0				8		
3.2	8	12	10.7	8	12	10.7	21.4		
3.3	10	12	13.4	10	12	13.4	26.8		
3.3	10	12	13.4	10	12	13.4	26.8		
TOTAL							534.3	106.1	26.7
ANTICIPATED FAILURES ( 15% )							80.1	15.9	4.0
SUB TOTAL 3 OF 3							614.4	122.0	30.7

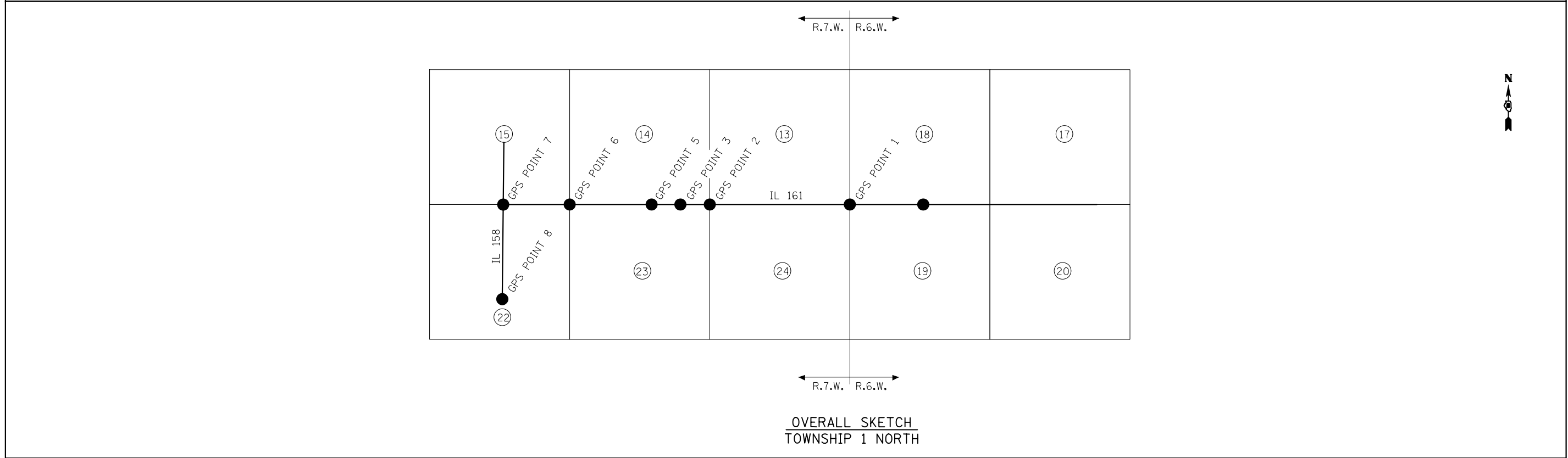
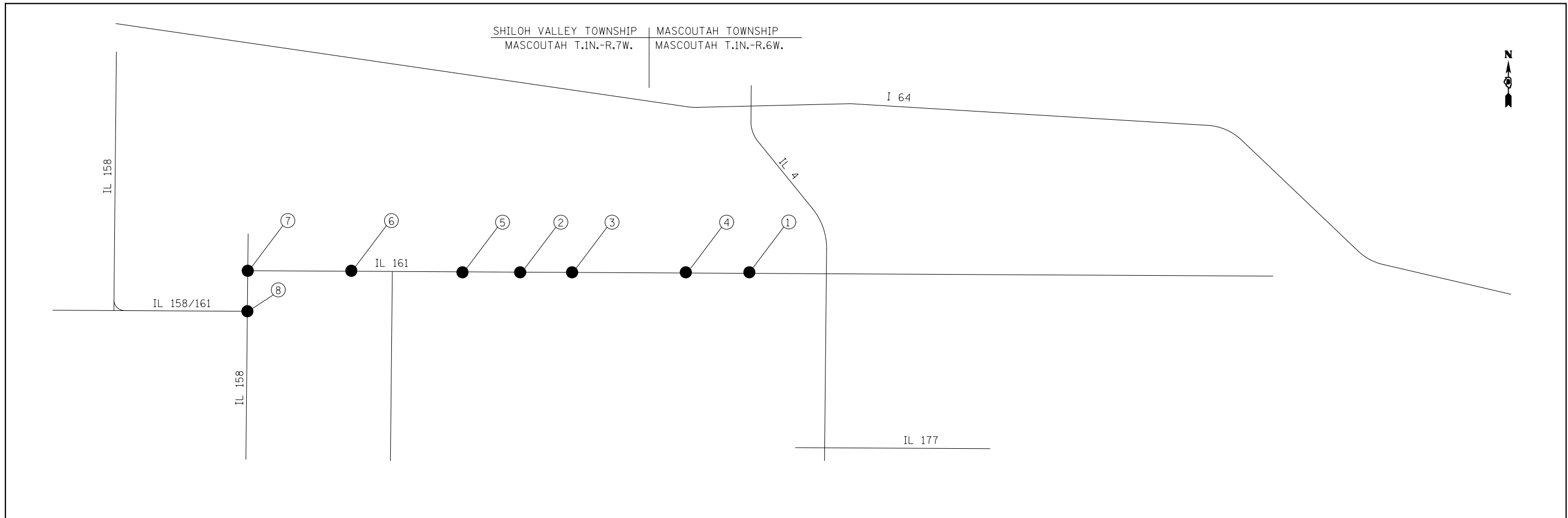
	TYPE II	TYPE III	TYPE IV
	SQ YD	SQ YD	SY YD
GRAND TOTAL	1025.5	177.2	30.705

FILE NAME =	USER NAME = CoppemolPE	DESIGNED -	REVISED -
pw:\IL084EB\INTEG\Illinois.gov\PWIDOT\Documents\DOT Offices\District 8\Projects\D876H01\CADData\CADsheets\D876H01\Drawings		DRAWN	REVISED -
Default	PLOT SCALE = 100,0000' / in.	CHECKED -	REVISED -
	PLOT DATE = 3/2/2018	DATE -	REVISED -

**STATE OF ILLINOIS  
DEPARTMENT OF TRANSPORTATION**

<b>SCHEDULE OF QUANTITIES</b>			
SCALE:	SHEET 9	OF 9	SHEETS
	STA.		TO STA.

* FAP 805 / FAU 9177			
F.A. RTE.	SECTION	COUNTY	TOTAL SHEETS
	124,125RS-1	ST. CLAIR	29
			SHEET NO. 19
			76H01
		ILLINOIS	FED. AID PROJECT



FILE NAME =	USER NAME = CoppernoIPE	DESIGNED -	REVISED -
pw:\IL084EBIDINTEG.illinois.gov\PWIDOT\Documents\IDOT Offices\District 8\Projects\0875\DRAWING\DATA\ADSheets\0875H01 -sht-ATB.dwg			REVISED -
Default	PLOT SCALE = 100.0000' / in.	CHECKED -	REVISED -
	PLOT DATE = 3/2/2018	DATE -	REVISED -

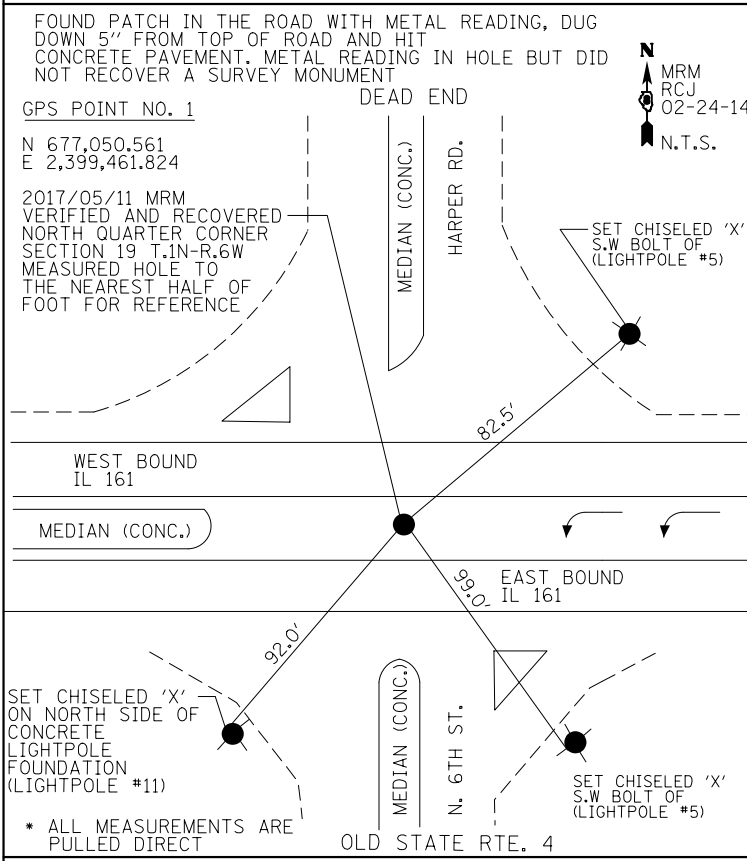
**STATE OF ILLINOIS  
DEPARTMENT OF TRANSPORTATION**

SURVEY MONUMENTS			
SCALE:	SHEET 1	OF 2 SHEETS	STA. TO STA.

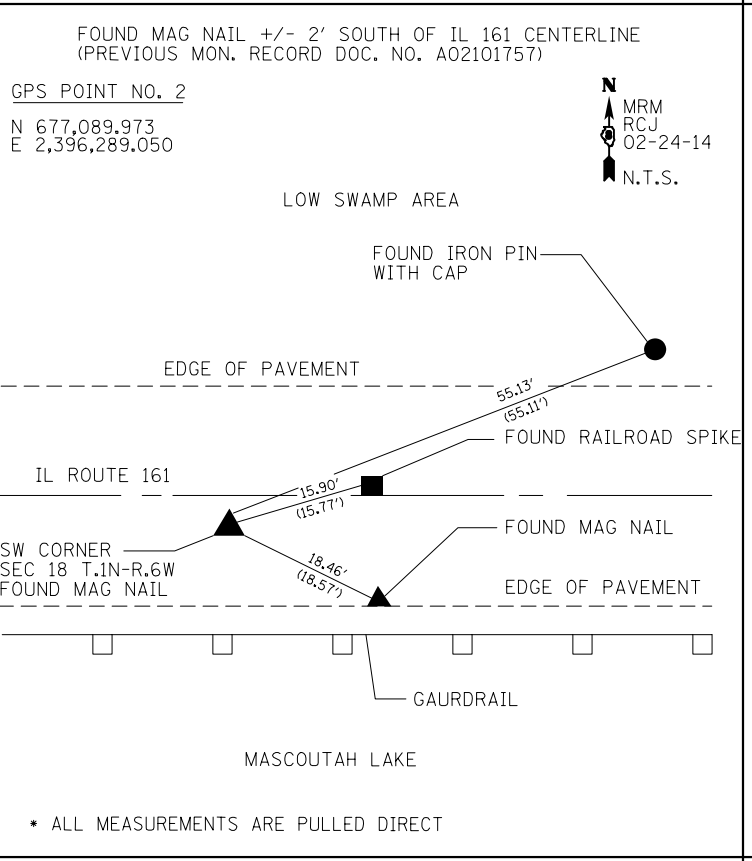
F.A.P. RTE.	SECTION	COUNTY	TOTAL SHEETS	SHEET NO.
•	124, 125RS-1	ST. CLAIR	29	20
CONTRACT NO. 76H01			ILLINOIS FED. AID PROJECT	

• FAP 805, FAU 9177

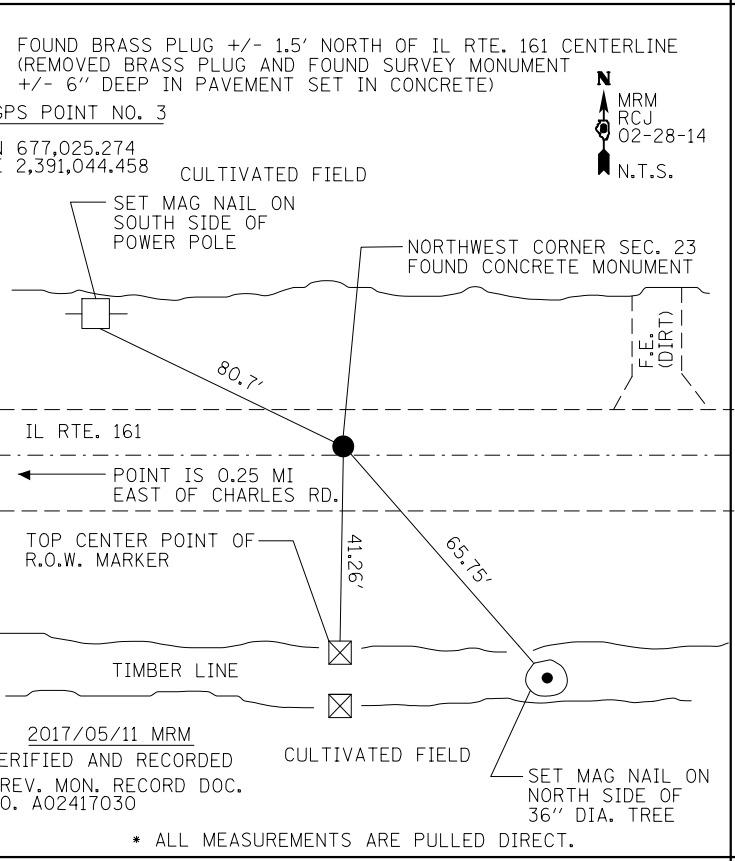
NORTH QUARTER CORNER SECTION 19 T.1N-R.6W



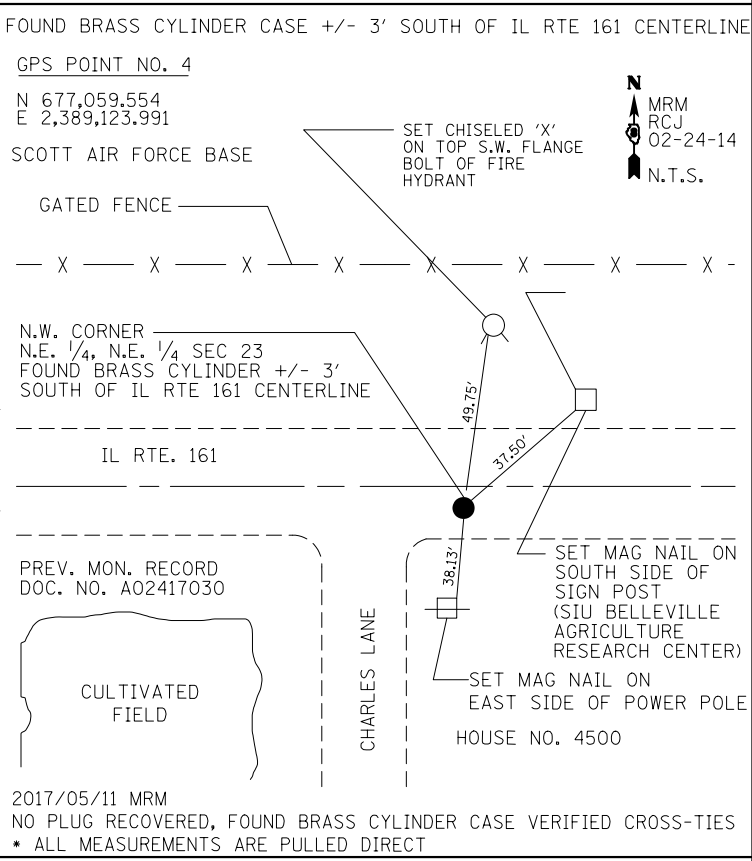
SOUTHWEST CORNER SECTION 18 T.1N-R.6W



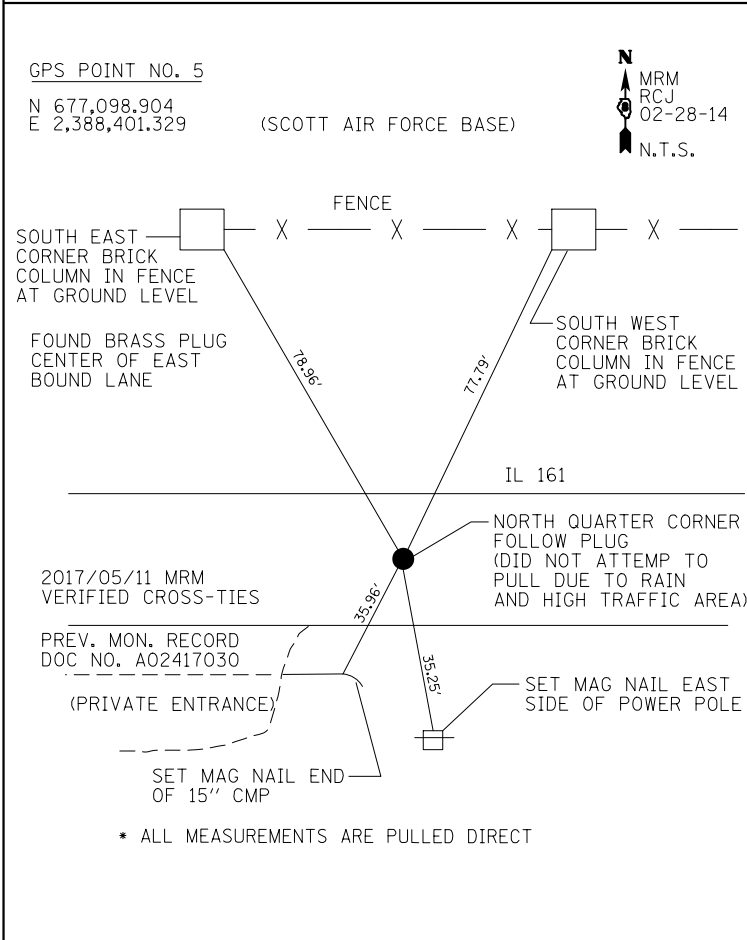
NORTHEAST CORNER SECTION 23 T.1N-R.7W



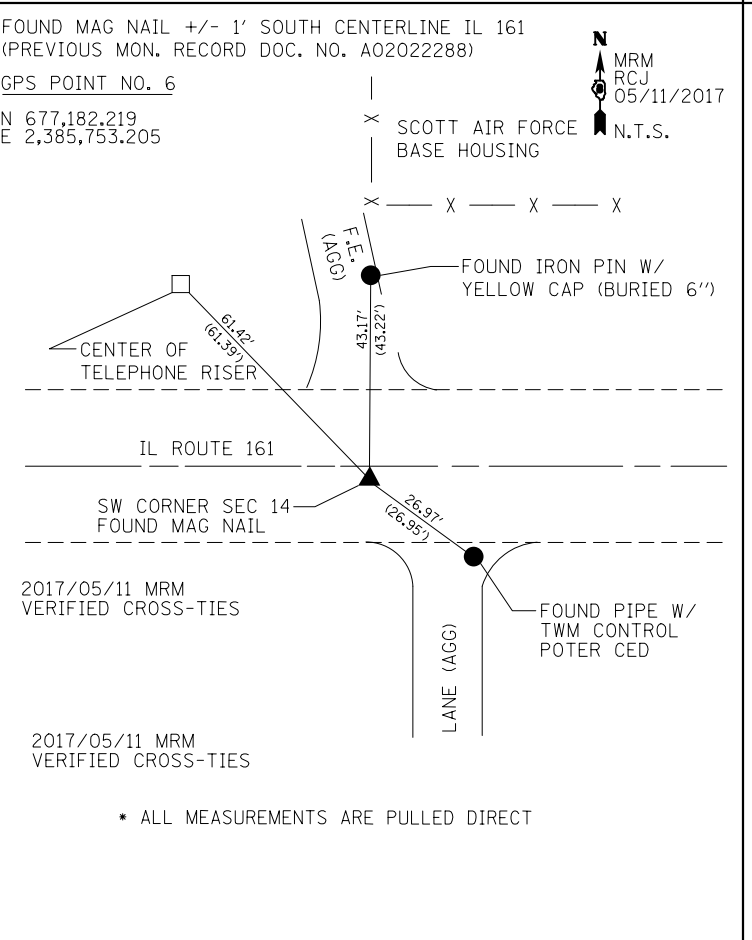
N.W. CORNER N.E. 1/4 SECTION 23 T.1N-R.7W.



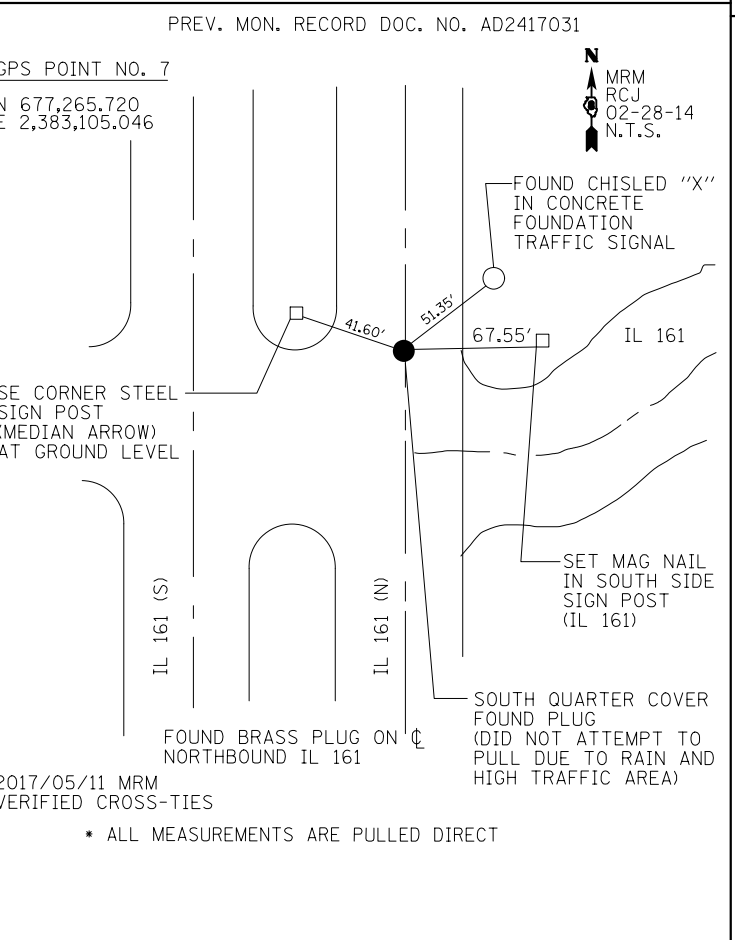
NORTH QUARTER SECTION 23 T.1N R.7W



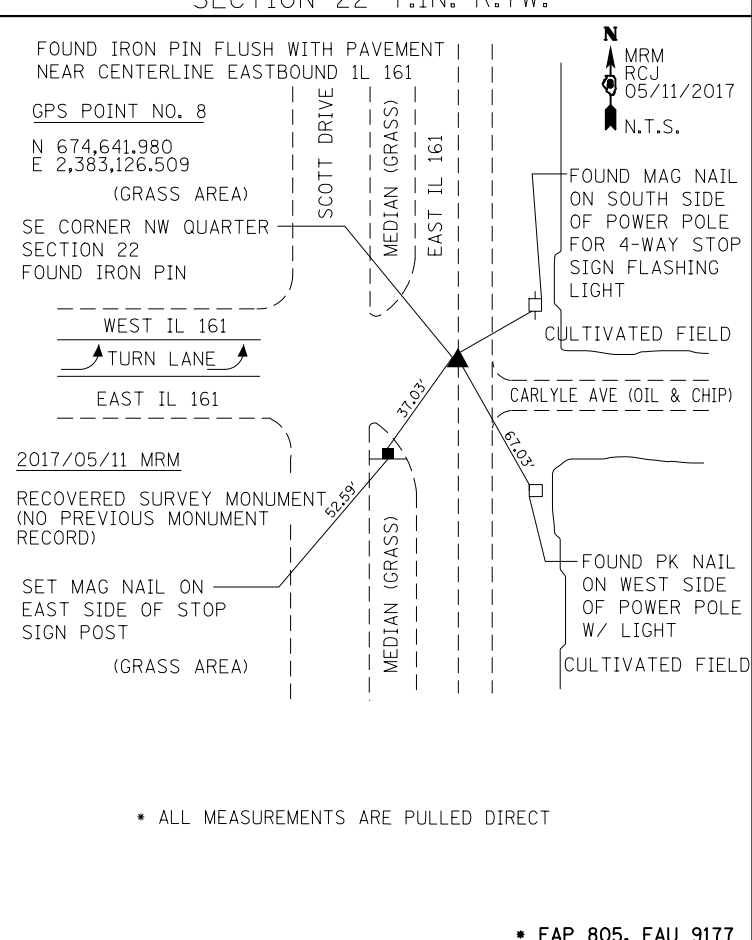
SOUTHWEST CORNER SECTION 14 T.1N-R.7W



SOUTH QUARTER CORNER SECTION 15 T.1N-R.7W



SOUTHEAST CORNER, NORTHWEST QUARTER SECTION 22 T.1N.-R.7W.



FILE NAME =	USER NAME = CopperrillPE	DESIGNED -	REVISED -
pw:\IL\084EBIDINTEG\illinois.gov\PWIDOT\Documents\IDOT Offices\District 8\Projects\0875\DRAWING\DATA\LEADSHEETS\D876H01-sht-ATB.dwg		CHECKED -	REVISED -
Default	PLOT DATE = 3/2/2018	DATE -	REVISED -

**STATE OF ILLINOIS  
DEPARTMENT OF TRANSPORTATION**

SURVEY MONUMENTS			
SCALE:	SHEET 2	OF 2 SHEETS	STA. TO STA.

F.A.P. RTE.	SECTION	COUNTY	TOTAL SHEETS	SHEET NO.
	124, 125RS-1	ST. CLAIR	29	21
CONTRACT NO. 76H01				
ILLINOIS FED. AID PROJECT				

\* FAP 805, FAU 9177



END NB & SB OLD IL 158 RESURFACING  
MILE STATION 0.93  
APPROXIMATELY 265 FEET SOUTH OF  
CL RR TRACKS

PATRIOTS DRIVE  
MILE STATION 0.81  
INTERSECTION OF OLD IL 158  
AND PATRIOTS DRIVE

INTERSECTION  
MILE STATION 0.48  
NB / SB IL 161;  
NB / SB OLD IL 158;  
EB / WB IL 161 (MS 0.0);

95 FT  
APPROX

BEGIN PROJECT (NB & SB IL161)  
MILE STATION 0.0  
APPROXIMATELY 55 FEET NORTH  
OF CL IL 158

BEGIN OMISSION  
MILE STATION 1.65  
SN 082-0094

HANNAH CHASE LANE  
MILE STATION 0.83

CHARLES LANE  
MILE STATION 1.30

BEGIN OMISSION  
MILE STATION 2.09  
SN 082-0095

END OMISSION  
MILE STATION 1.67  
SN 082-0094

END OMISSION  
MILE STATION 2.19  
SN 082-0095

N. COUNTY ROAD  
MILE STATION 2.39

HARPER ROAD/N. 6TH ST.  
MILE STATION 3.10

BEGIN IL 4 OMISSION  
MILE STATION 3.82

IL 4  
MILE STATION 3.92

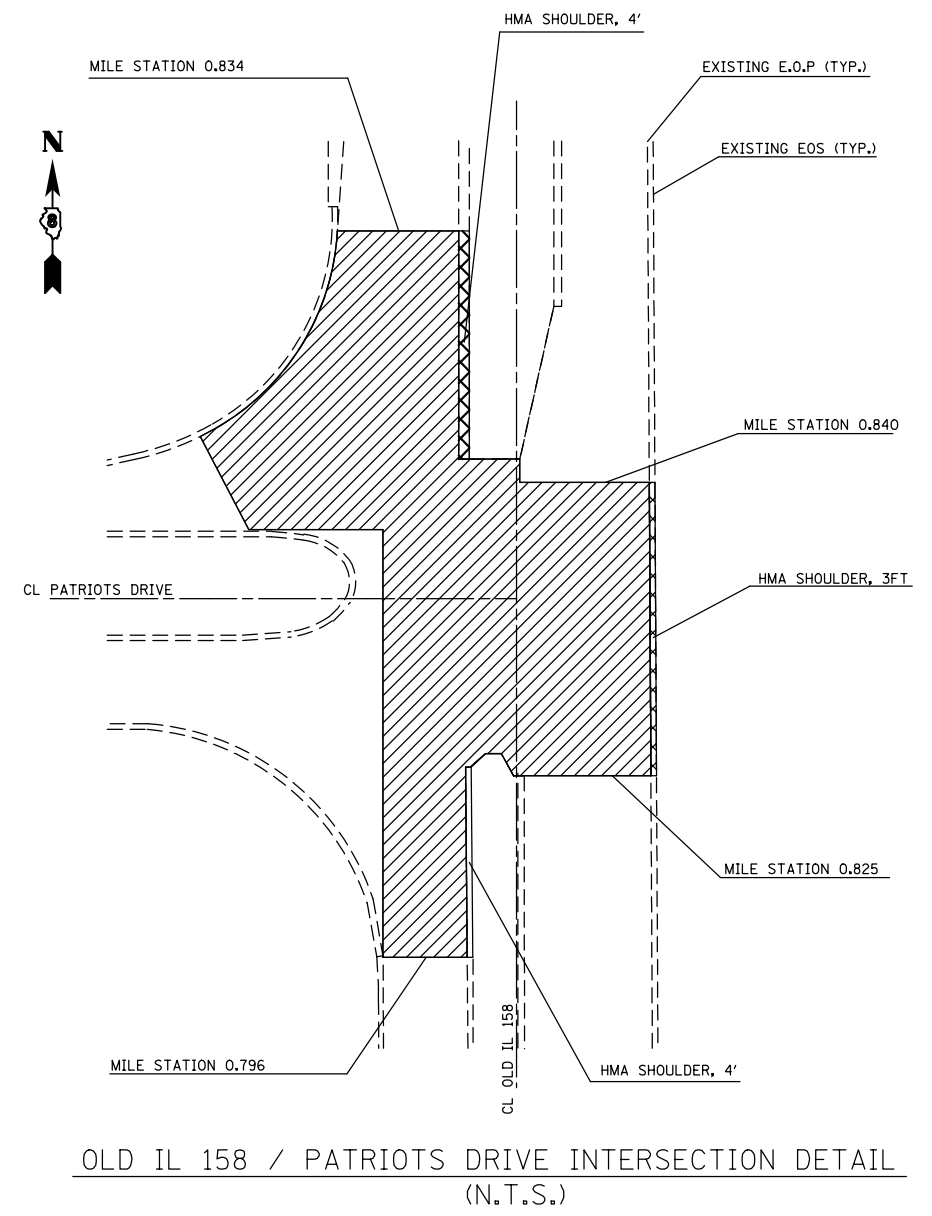
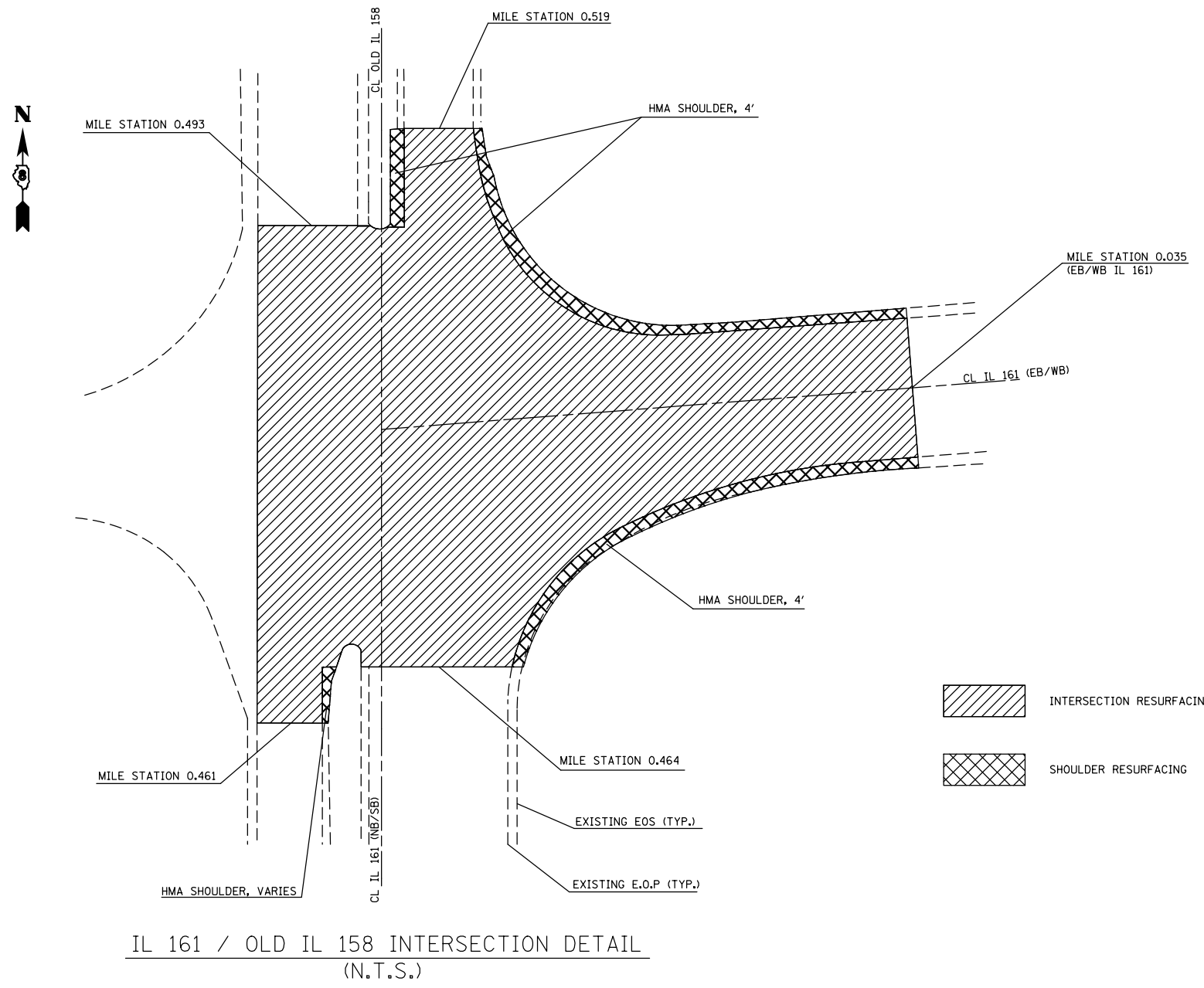
END PROJECT (EB & WB IL161)  
MILE STATION 4.18

END IL 4 OMISSION  
MILE STATION 3.88

LOCATION MAP  
(N.T.S.)

\* FAP 805 / FAU 9177

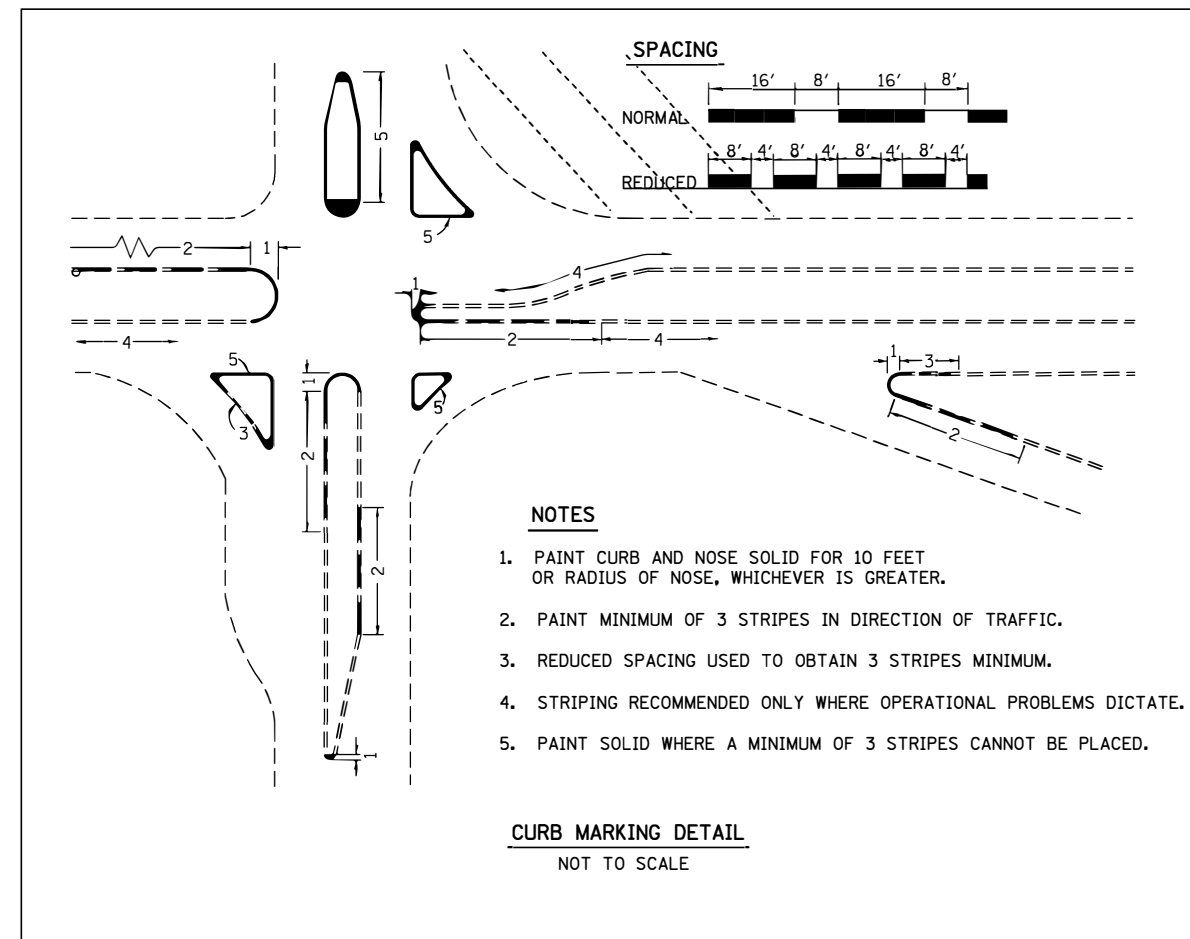
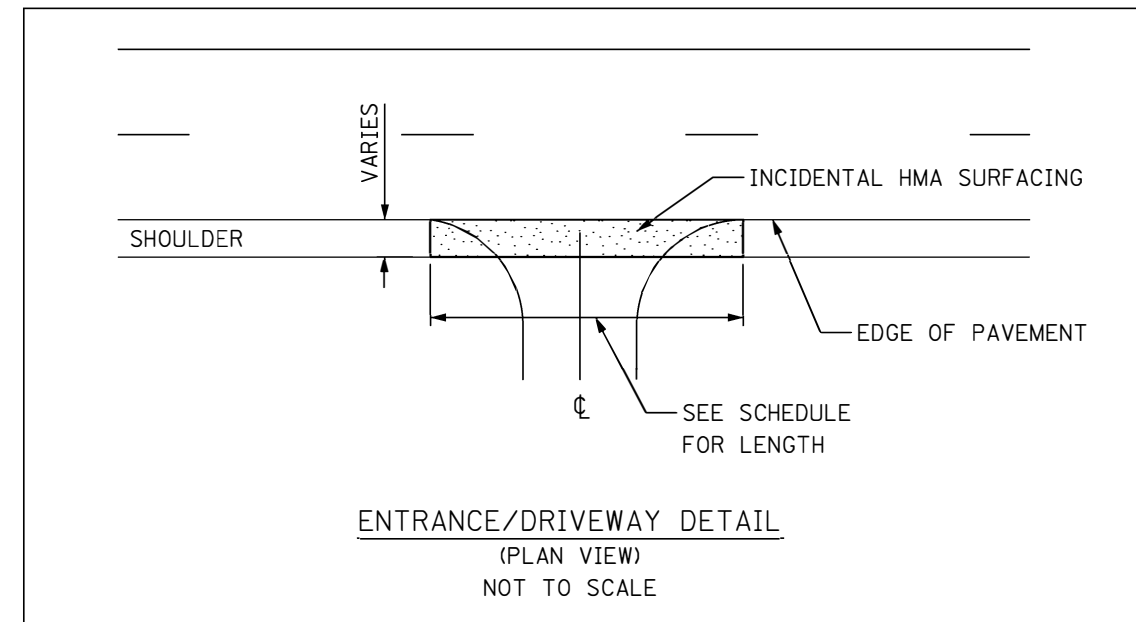
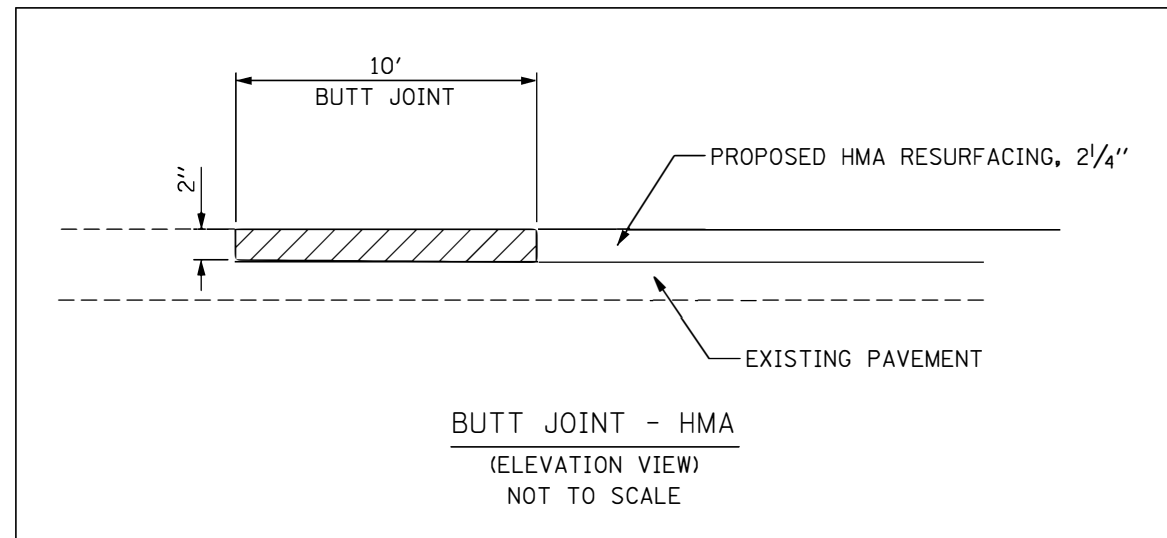
FILE NAME =	USER NAME = CoppemolPE	DESIGNED -	REVISED -	<b>STATE OF ILLINOIS DEPARTMENT OF TRANSPORTATION</b>	<b>LOCATION MAP</b>			F.A. RTE.	SECTION	COUNTY	TOTAL SHEETS	SHEET NO.		
pw:\IL084EBIDINTEG\Illinois.gov\PWIDOT\Documents\DOT Offices\District 8\Projects\D876H01\CADDData\CADsheets\D876H01\Drawings\11111111.dgn		CHECKED -	REVISED -		SCALE: NTS	SHEET 1	OF 1	SHEETS	STA.	TO STA.	124.125RS-1	ST CLAIR	29	22
Default	PLOT SCALE = 100.0000' / in.	DATE -	REVISED -								CONTRACT NO. 76H01			
	PLOT DATE = 3/2/2018										ILLINOIS FED. AID PROJECT			



DETAILS INTENDED FOR CONCEPTUAL LIMITS OF INTERSECTION RESURFACING. CALCULATED QUANTITIES SCALED FROM AERIAL IMAGES.

\* FAP 805 / FAU 9177

FILE NAME =	USER NAME = CoppemolPE	DESIGNED -	REVISED -	<b>STATE OF ILLINOIS DEPARTMENT OF TRANSPORTATION</b>	<b>DETAILS</b>			F.A. * RTE.	SECTION	COUNTY	TOTAL SHEETS	SHEET NO.		
pw:\IL084EB\INTEG\Illinois.gov\PWIDOT\Documents\DOT Offices\District 8\Projects\D876H01\CADData\CADsheets\D876H01\111111.dgn		DRAWN	REVISED -		SCALE: NTS	SHEET 1	OF 4	SHEETS	STA.	TO STA.	124.125RS-1	ST CLAIR	29	23
Default	PLOT SCALE = 100.0000' / in.	CHECKED -	REVISED -								CONTRACT NO. 76H01			
	PLOT DATE = 3/2/2018	DATE -	REVISED -								ILLINOIS FED. AID PROJECT			



\* FAP 805 / FAU 9177

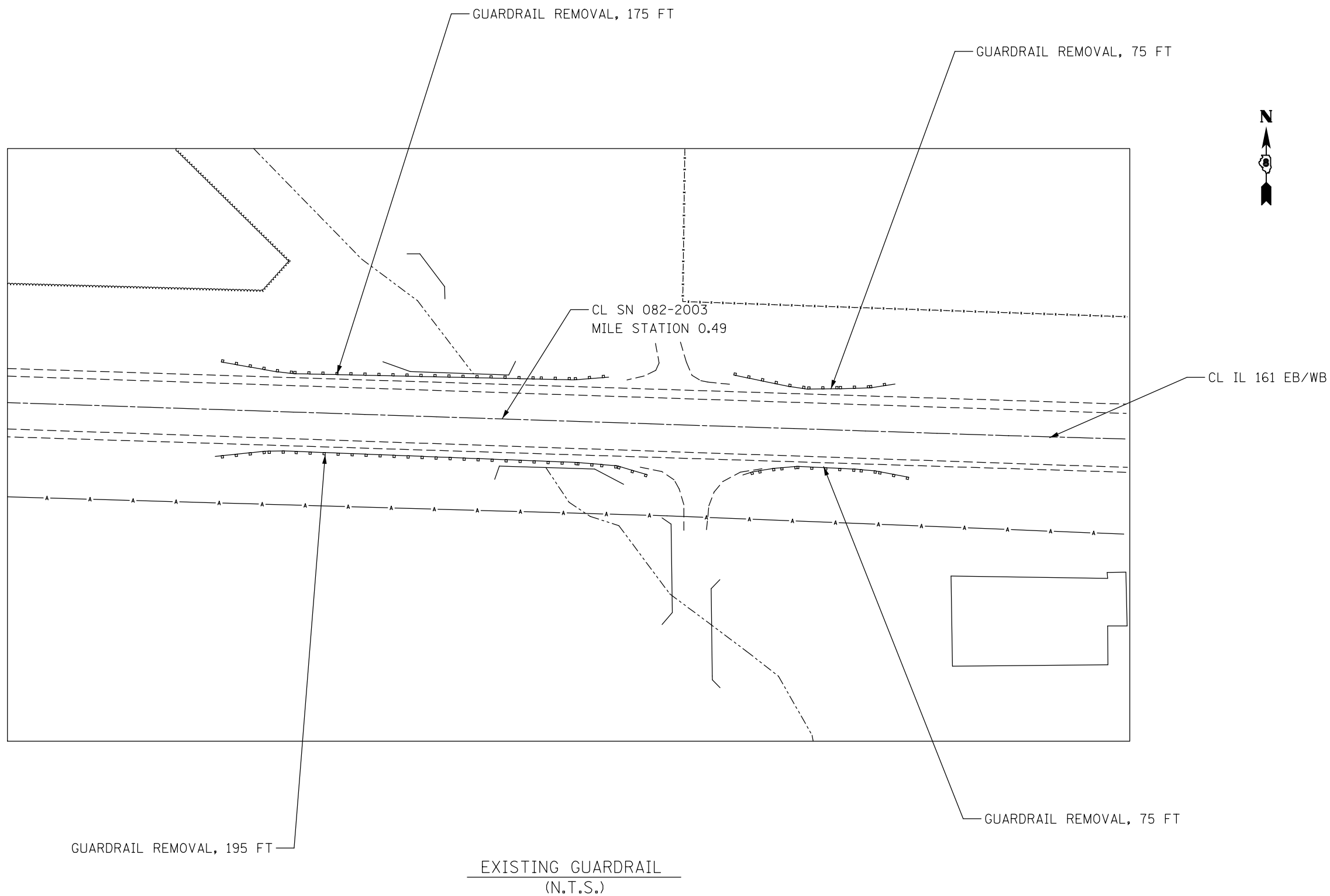
FILE NAME =	USER NAME = CoppemolPE	DESIGNED -	REVISED -
pw:\11084EBID\INTEG.illinois.gov\PWIDOT\Documents\IDT\Office\District 8\Projects\D876H01\CADData\CADsheets\D876H01\CAD\Drawings\Drawings.dgn			REVISED -
	PLOT SCALE = 100.0000' / in.	CHECKED -	REVISED -
Default	PLOT DATE = 3/2/2018	DATE -	REVISED -

**STATE OF ILLINOIS**  
**DEPARTMENT OF TRANSPORTATION**

<b>DETAILS</b>			
SCALE: NTS	SHEET 2	OF 4 SHEETS	STA. TO STA.

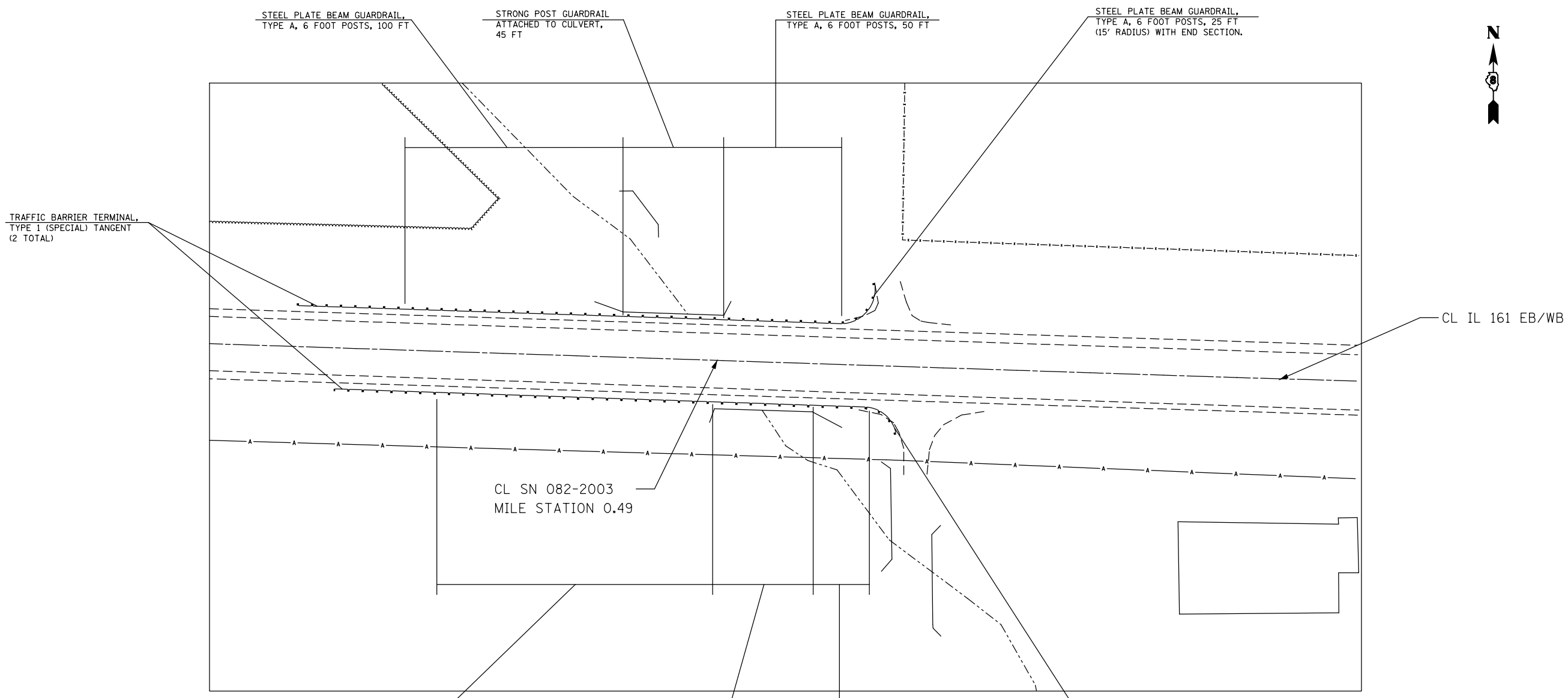
F.A. RTE.	SECTION	COUNTY	TOTAL SHEETS	SHEET NO.
*	124.125RS-1	ST CLAIR	27	24
CONTRACT NO.			76H01	
ILLINOIS   FED. AID PROJECT				



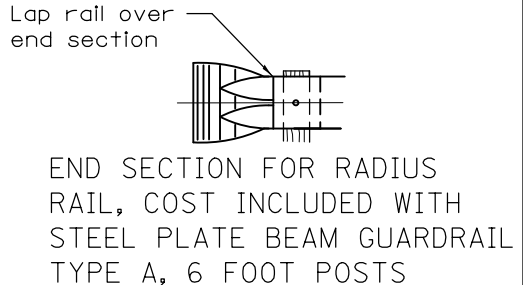


\* FAP 805 / FAU 9177

FILE NAME =	USER NAME = CoppemolPE	DESIGNED -	REVISED -	<b>STATE OF ILLINOIS DEPARTMENT OF TRANSPORTATION</b>	<b>DETAILS</b>				F.A. RTE.	SECTION	COUNTY	TOTAL SHEETS	SHEET NO.
pvc:\IL084EB\INTEG\Illinois.gov\PWIDOT\Documents\DOT Offices\District 8\Projects\D876H01\CADD\Drawings\Drawings\Drawings.dgn		CHECKED -	REVISED -		SCALE: NTS	SHEET 3	OF 4	SHEETS	STA.	TO STA.	ST CLAIR	29	25
Default	PLOT SCALE = 100.0000' / in.	DATE -	REVISED -						CONTRACT NO. 76H01		ILLINOIS FED. AID PROJECT		
	PLOT DATE = 3/2/2018												



PROPOSED GUARDRAIL  
(N.T.S.)



\* FAP 805 / FAU 9177

FILE NAME =	USER NAME = CoppemolPE	DESIGNED -	REVISED -
pw:\IL084EB\INTEG\Illinois.gov\PWIDOT\Documents\DOT Offices\District 8\Projects\D876H01\CADDData\CADsheets\D876H01\Drawings\		DRAWN	REVISED -
Default	PLOT SCALE = 100.0000' / in.	CHECKED -	REVISED -
	PLOT DATE = 3/2/2018	DATE -	REVISED -

STATE OF ILLINOIS  
DEPARTMENT OF TRANSPORTATION

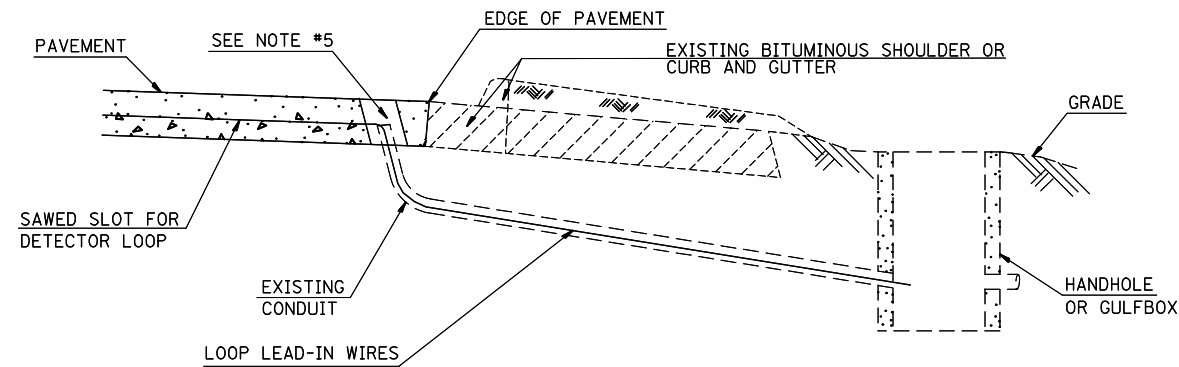
<b>DETAILS</b>			
SCALE: NTS	SHEET 4	OF 4 SHEETS	STA. TO STA.

F.A. RTE.	SECTION	COUNTY	TOTAL SHEETS	SHEET NO.
*	124.125RS-1	ST CLAIR	29	26
CONTRACT NO.			76H01	
ILLINOIS FED. AID PROJECT				

**NOTES:**

SEE TABLE "DETECTOR LOOP REQUIREMENTS AND CALCULATIONS"  
FOR LOOP SIZE AND CALCULATED NUMBER OF TURNS.  
SEE "DETAIL A" FOR INSTALLING DETECTOR LOOP WIRES  
IN EXISTING CONDUITS.

SCHEDULE OF QUANTITIES			TOTAL QUANTITIES	OLD 158 & IL 161	OLD 158 & PATRIOT'S DR.
CODE NO	ITEM	UNIT			
<del>80300100</del>	LOCATING UNDERGROUND CABLE	FOOT	150	100	50
<del>88600600</del>	DETECTOR LOOP REPLACEMENT	FOOT	3919	2253	1666



**DETAIL A**  
(NO SCALE)

**INSTALLING DETECTOR LOOP WIRES IN EXISTING CONDUIT**

1. DRILL OUT PAVEMENT SEALANT AND CLEAN EXISTING CONDUIT.
2. REMOVE EXISTING DETECTOR LOOP WIRES TO HANDHOLE OR GULFBOX.
3. INSTALL NEW LOOP LEAD-IN WIRES IN EXISTING CONDUIT.
4. SPLICE NEW DETECTOR LOOP WIRES TO EXISTING LOOP LEAD-IN CABLE IN HANDHOLE OR GULFBOX.
5. FILL HOLE WITH APPROVED SEALER. PREVENT SEALER FROM ENTERING INTO CONDUIT.
6. LOCATING UNDERGROUND CABLE WILL BE PAID FOR SEPARATELY.

NOT A PAY ITEM. THE COST OF THIS WORK SHALL BE INCLUDED IN THE PAY ITEM "DETECTOR LOOP REPLACEMENT"

**DETECTOR LOOP REPLACEMENT LEGEND**

- ☒ EX. HANDHOLE
- EX. DETECTOR LOOP
- ▣ EX. TRAFFIC SIGNAL CONTROLLER
- EXISTING CONDUIT
- ▭ PROPOSED DETECTOR LOOP

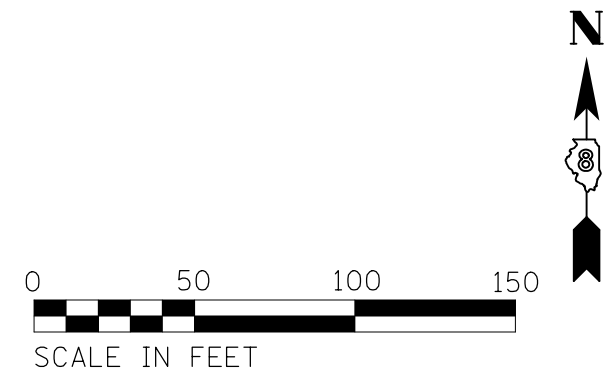
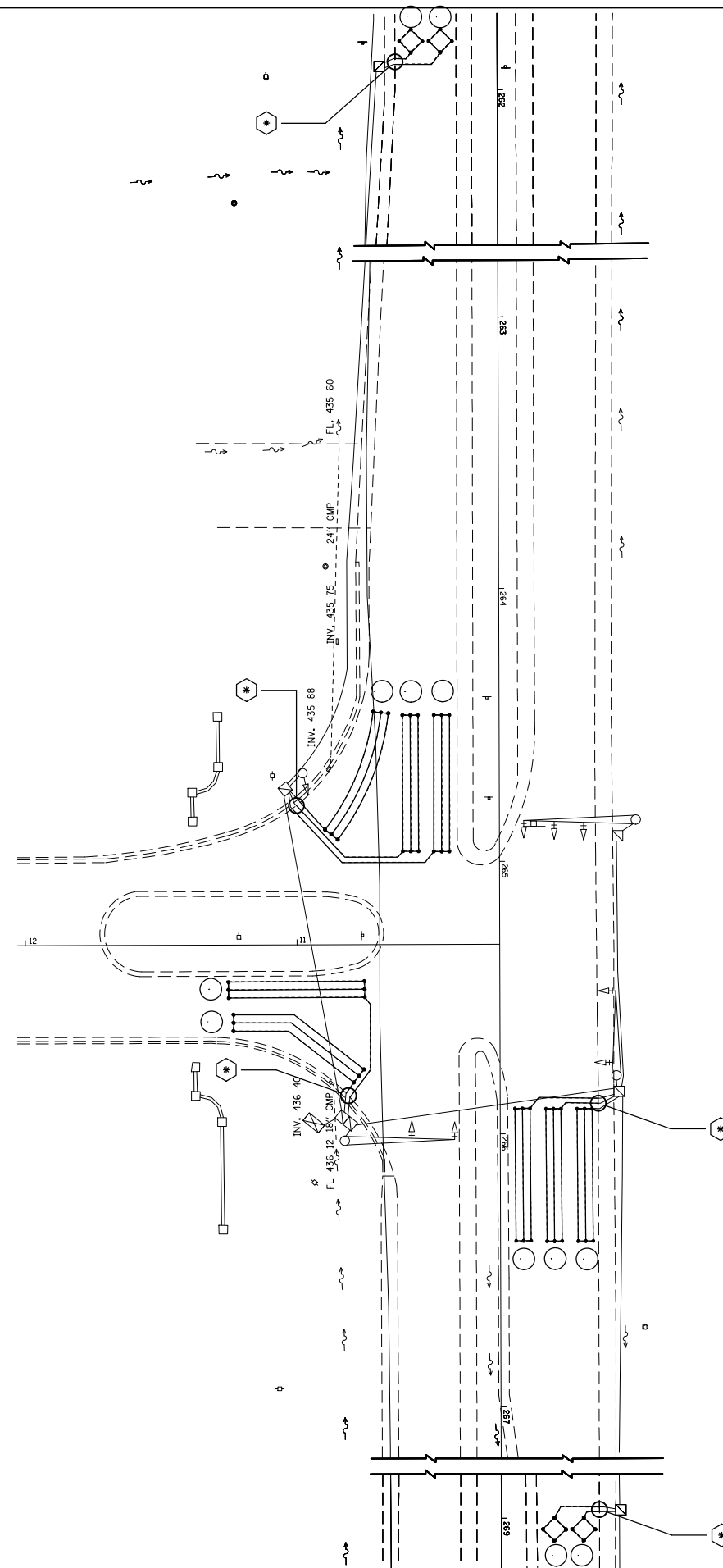
DETECTOR LOOP REQUIREMENTS AND CALCULATIONS

LOOP#	PHASE #	LOOP SIZE (FT. X FT.)	REQUIRED # OF TURNS	CALCULATED INDUCTANCE MICROHENRIES	CALCULATED RESISTANCE OHMS
1. EBLT CD	4	6' x 50'(Q)	3-6-3	799.20	1.89
2. EBRT CD	4	6' x 50'(Q)	3-6-3	791.28	1.71
3. NB CCO	2	6' x 6'	6	341.34	2.33
4. NB CCO	2	6' x 6'	6	338.70	2.27
5. NBLT CD	5	6' x 50'(Q)	3-6-3	819.22	2.35
6. NB THRU CD	2	6' x 50'(Q)	3-6-3	816.58	2.29
7. NB THRU CD	2	6' x 50'(Q)	3-6-3	814.38	2.24
8. SB CCO	6	6' x 6'	6	356.08	2.66
9. SB CCO	6	6' x 6'	6	353.44	2.60
10. SB THRU CD	6	6' x 50'(Q)	3-6-3	832.20	2.64
11. SB THRU CD	6	6' x 50'(Q)	3-6-3	828.90	2.57
12. SBRT CD	6	6' x 50'(Q)	3-6-3	820.98	2.39

THE ABOVE VALUES ARE CALCULATED OF COMBINED LOOP AND LEAD-IN INDUCTANCE AND RESISTANCE. ACTUAL MEASURED VALUES SHOULD BE WITHIN +/- 20% OF THESE VALUES.

Q=QUADRAPOLE

 =SEE DETAIL "A"



FILE NAME =	USER NAME = CoppernoIPE	DESIGNED -	REVISED -
p:\11\084EBIDINTEG.illinois.gov\PIDOT\Documents\IDOT Offices\District 8\Projects\0875\DRAWING\GADsheets\0875-01-shr-plan.dwg		CHECKED -	REVISED -
	PLOT SCALE = 59.8038' / in.	DATE -	REVISED -
	PLOT DATE = 3/2/2018		

STATE OF ILLINOIS  
DEPARTMENT OF TRANSPORTATION

DETECTOR LOOP REPLACEMENT  
OLD 158 & PATRIOT'S DR.

SCALE: SHEET NO. 2 OF 3 SHEETS STA. TO STA.

ROUTE	SECTION	COUNTY	TOTAL SHEETS	SHEET NO.
•	124,125R5-1	ST. CLAIR	29	28
• FAP 805/FAU 9177			CONTRACT NO. 76H01	
FED. ROAD DIST. NO.		ILLINOIS FED. AID PROJECT		

DETECTOR LOOP REQUIREMENTS AND CALCULATIONS

LOOP#	PHASE #	LOOP SIZE (FT. X FT.)	REQUIRED # OF TURNS	CALCULATED INDUCTANCE MICROHENRIES	CALCULATED RESISTANCE OHMS
1. EBLT CD	4	6' x 50'(Q)	3-6-3	835.50	2.72
2. EBRT CD	4	6' x 20'(Q)	3-6-3	382.20	1.74
3. NB CCO	2	6' x 6'	6	309.22	1.60
4. NB CCO	2	6' x 6'	6	306.36	1.53
5. NB CCO	2	6' x 6'	6	303.50	1.47
6. NBLT CD	5	6' x 50'(Q)	3-6-3	799.86	1.91
7. NB THRU CD	2	6' x 50'(Q)	3-6-3	802.72	1.97
8. NB THRU CD	2	6' x 50'(Q)	3-6-3	802.94	1.98
9. NBRT CD	2	6' x 50'(Q)	3-6-3	800.08	1.91
10. WB CCO	2	6' x 6'	6	380.94	3.23
11. WB CCO	3	6' x 6'	6	379.84	3.20
12. WBLT CD	3	6' x 50'(Q)	3-6-3	828.02	2.55
13. WB THRU CD	3	6' x 50'(Q)	3-6-3	825.16	2.48
14. WBRT CD	3	6' x 50'(Q)	3-6-3	821.64	2.40
15. SB CCO	6	6' x 6'	7	516.95	3.85
16. SB CCO	6	6' x 6'	7	514.31	3.79
17. SBLT CD	1	6' x 50'(Q)	3-6-3	865.86	3.41
18. SB THRU CD	6	6' x 50'(Q)	3-6-3	863.00	3.34
19. SBRT CD	6	6' x 50'(Q)	3-6-3	860.80	3.29

THE ABOVE VALUES ARE CALCULATED OF COMBINED LOOP AND LEAD-IN INDUCTANCE AND RESISTANCE. ACTUAL MEASURED VALUES SHOULD BE WITHIN +/- 20% OF THESE VALUES.

Q=QUADRAPOLE

\* =SEE DETAIL "A"

