

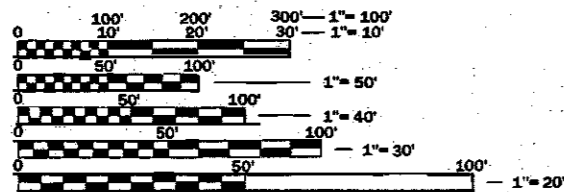
INDEX OF SHEETS

06-15-2018 LETTING ITEM 119

- 1. COVER SHEET
- 2. GENERAL NOTES
- 3-4. SUMMARY OF QUANTITIES
- 5. TYPICAL SECTIONS
- 6-8. SCHEDULES
- 9. TRAFFIC CONTROL AND PROTECTION, STANDARD 701400
- 10. PAVEMENT MARKING
- 11-12. CLASS A PATCHING DETAILS

STANDARDS

- 000001-06 STANDARD SYMBOLS, ABBREVIATIONS AND PATTERNS
- 001001-02 AREAS OF REINFORCEMENT BARS
- 001006 DECIMAL OF AN INCH AND OF A FOOT
- 701101-05 OFF-ROAD OPERATIONS, MULTILANE, 15' (4.5 m) TO 24' (600 mm) FROM PAVEMENT EDGE
- 701106-02 OFF-ROAD OPERATIONS, MULTILANE, MORE THAN 15' (4.5 m) AWAY
- 701401-11 LANE CLOSURE, FREEWAY/EXPRESSWAY
- 701411-09 LANE CLOSURE, MULTILANE, AT ENTRANCE OR EXIT RAMP FOR SPEEDS \geq 45 MPH
- 701426-09 LANE CLOSURE, MULTILANE INTERMITTENT OR MOVING OPERATION, FOR SPEEDS \geq 45 MPH
- 701428-01 TRAFFIC CONTROL, SETUP AND REMOVAL, FREEWAY/EXPRESSWAY
- 701901-07 TRAFFIC CONTROL DEVICES
- 701400-09 APPROACH TO LANE CLOSURE, FREEWAY/EXPRESSWAY



FULL SIZE PLANS HAVE BEEN PREPARED USING STANDARD ENGINEERING SCALES. REDUCED SIZED PLANS WILL NOT CONFORM TO STANDARD SCALES. IN MAKING MEASUREMENTS ON REDUCED PLANS, THE ABOVE SCALES MAY BE USED.

J.U.L.I.E.
JOINT UTILITY LOCATION INFORMATION FOR EXCAVATION
1-800-892-0123
OR 811

PROJECT ENGINEER: JOE KANNEL P.E.
UNIT CHIEF: RON WOODSHANK
DISTRICT 3 NO. (815) 434-6131
CONTRACT NO. 66J30

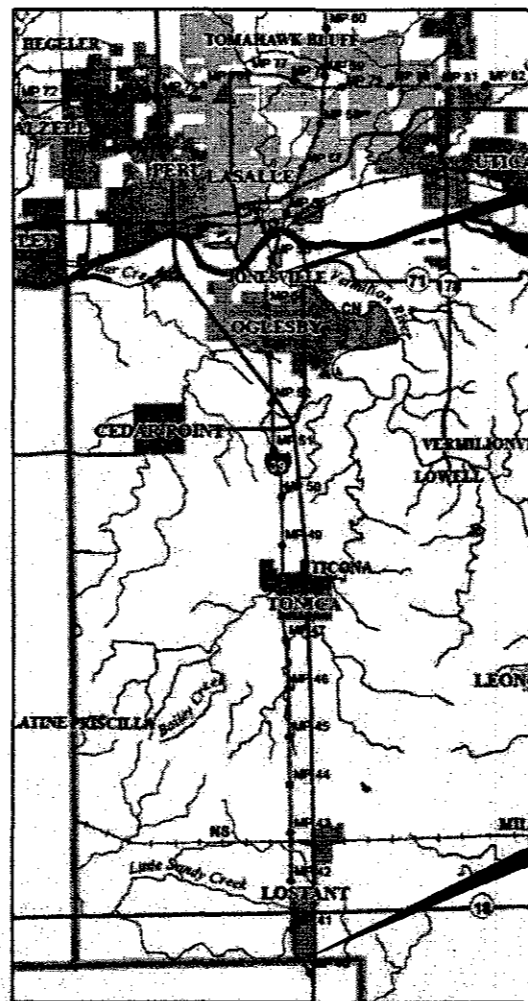
STATE OF ILLINOIS
DEPARTMENT OF TRANSPORTATION

**PROPOSED
HIGHWAY PLANS**

F.A.I. ROUTE 39 (I-39)
SECTION D3 I-39 PP 2019-1
PROJECT

PAVEMENT PATCHING
LASALLE COUNTY

C-93-074-18



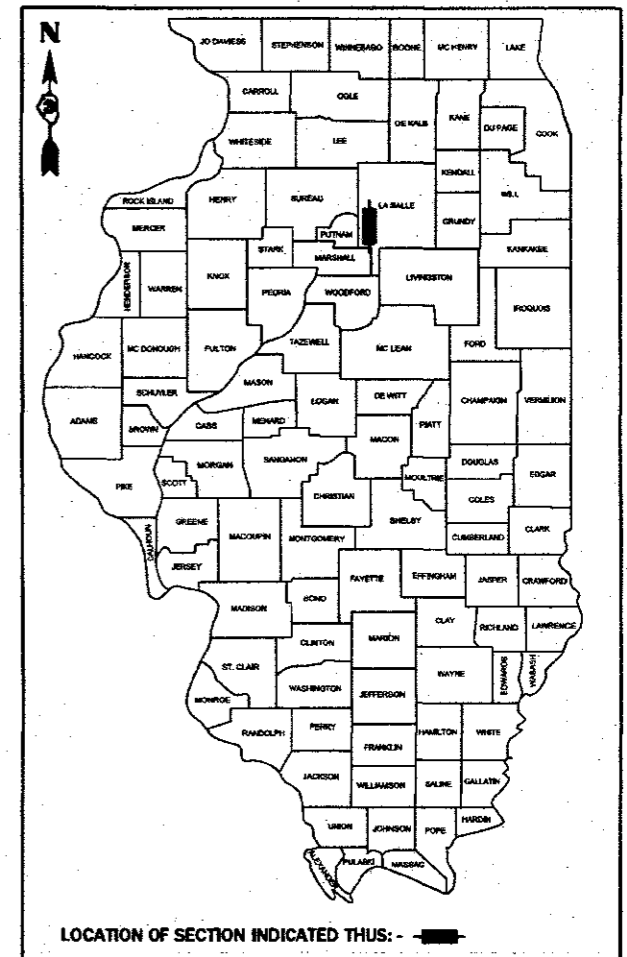
END IMPROVEMENT
ILLINOIS RIVER
(SOUTH END OF S.N. 050-0191)
M.M. 54.6

BEGIN IMPROVEMENT
MARSHALL / LASALLE COUNTY LINE
M.M. 40.32

GROSS LENGTH = 75,504 FT. = 14.3 MILE
NET LENGTH = 461 FT. = 0.08 MILE

F.A.I. RTE.	SECTION	COUNTY	TOTAL SHEETS	SHEET NO.
39	D3 I-39 PP 2019-1	LASALLE	12	1
ILLINOIS			CONTRACT NO. 66J30	

D-93-070-18



LOCATION OF SECTION INDICATED THIS: -

FUNCTIONAL CLASSIFICATION
RURAL/URBAN INTERSTATE
F.A.I. ROUTE 39 (I-39)
2017 ADT 19683
P.V. 64.9% S.U. 5.7% M.U. 29.4%

STATE OF ILLINOIS
DEPARTMENT OF TRANSPORTATION

SUBMITTED 3-29 2018
Mark
REGIONAL ENGINEER

May 4 2018
Eric
ENGINEER OF DESIGN AND ENVIRONMENT

May 11 2018
Paul P. Ch...
DIRECTOR OF HIGHWAYS PROJECT IMPLEMENTATION

PRINTED BY THE AUTHORITY
OF THE STATE OF ILLINOIS

GENERAL NOTES

PLAN DIMENSIONS AND DETAILS RELATIVE TO EXISTING PLANS ARE SUBJECT TO NOMINAL CONSTRUCTION VARIATIONS. THE CONTRACTOR SHALL FIELD VERIFY EXISTING DIMENSIONS AND DETAILS AFFECTING NEW CONSTRUCTION AND MAKE NECESSARY APPROVED ADJUSTMENTS PRIOR TO CONSTRUCTION OR ORDERING OF MATERIALS. SUCH VARIATIONS SHALL NOT BE CAUSE FOR ADDITIONAL COMPENSATION FOR A CHANGE IN SCOPE OF WORK; HOWEVER, THE CONTRACTOR WILL BE PAID FOR THE QUANTITY ACTUALLY FURNISHED AT THE UNIT PRICE BID FOR THE WORK.

FOR STABILIZATION, ALL TYPE III BARRICADES WILL REQUIRE A MINIMUM OF FOUR SAND BAGS PER BARRICADE.

ALL EXCAVATED MATERIAL, WHICH INCLUDES DIGGING OR GRADING OF ANY SOIL OR FILL MATERIAL, WITH THE EXCEPTION OF AGGREGATE FILLS, MUST BE INCORPORATED WITHIN THE IDOT RIGHT OF WAY DUE TO ENVIRONMENTAL DOCUMENTATION REQUIREMENTS.

ANY REFERENCE TO A STANDARD IN THESE PLANS SHALL BE INTERPRETED TO MEAN THE EDITION AS INDICATED BY THE SUBNUMBER SHOWN IN THE LIST OF STANDARDS OR THE COPY INCLUDED IN THESE PLANS.

THE CONTRACTOR SHALL CONTACT JULIE AT LEAST 48 HOURS PRIOR TO EXCAVATION TO DETERMINE WHICH UTILITIES ARE IN THE AREA.

COMMITMENTS

STATE OF ILLINOIS
DEPARTMENT OF TRANSPORTATION
DISTRICT THREE
AS BUILT INFORMATION

SUPERVISING CONSTRUCTION FIELD ENGINEER

RESIDENT ENGINEER / TECHNICIAN

START & END DATES
OF CONSTRUCTION:

INSPECTORS:

STATE OF ILLINOIS
DEPARTMENT OF TRANSPORTATION
DISTRICT THREE

PREPARED BY: Don Benoit
DISTRICT STUDIES & PLANS ENGINEER

DATE: 3-27-18

EXAMINED BY: Kyle Videman
DISTRICT CONSTRUCTION ENGINEER

Michael K. Skot
DISTRICT MATERIALS ENGINEER

Jim [Signature]
DISTRICT OPERATIONS ENGINEER

STATE OF ILLINOIS
DEPARTMENT OF TRANSPORTATION

GENERAL NOTES

FILE NAME =	USER NAME = woodjerp	DESIGNED - JW	REVISED -
pr\ML084EB\DOT\TEG\Illinois.gov\FWDOT\Documents\DOT Offices\District 3\Projects\398-30\CAD\1803-0001.dwg		DRAWN - JW	REVISED -
Default	PLOT SCALE = 100,0000 / ft.	CHECKED - JW	REVISED -
	PLOT DATE = 3/29/2018	DATE - 03/01/2018	REVISED -

SCALE: SHEET 1 OF 1 SHEETS STA. TO STA.

FAL RTE.	SECTION	COUNTY	TOTAL SHEETS	SHEET NO.
39	D3-38 PP 2019-1	LASALLE	12	2
CONTRACT NO. 66J30				
ILLINOIS FED. AID PROJECT				

CODE NO.	ITEM	UNIT	TOTAL QUANTITY	CONSTRUCTION CODE	
				CONTRACT MAINTENANCE 100% STATE ROADWAY	CONTRACT MAINTENANCE 100% STATE ROADWAY
				0005 RURAL	0005 URBAN
44200553	CLASS A PATCHES, TYPE II, 10 INCH	SQ YD	427	351	76
44200557	CLASS A PATCHES, TYPE III, 10 INCH	SQ YD	69	53	16
44200559	CLASS A PATCHES, TYPE IV, 10 INCH	SQ YD	166	166	
44213000	PATCHING REINFORCEMENT	SQ YD	612	520	92
44213200	SAW CUTS	FOOT	2218	1886	332
44213204	TIE BARS 3/4"	EACH	2311	1975	336
67100100	MOBILIZATION	L SUM	1	0.5	0.5
70100420	TRAFFIC CONTROL AND PROTECTION, STANDARD 701411	EACH	6	6	
70100800	TRAFFIC CONTROL AND PROTECTION, STANDARD 701401	L SUM	1	0.5	0.5
70103815	TRAFFIC CONTROL SURVEILLANCE	CAL DAY	10	8	2
* 78008310	POLYUREA PAVEMENT MARKING TYPE II - LINE 4"	FOOT	461	391	70
* 78008330	POLYUREA PAVEMENT MARKING TYPE II - LINE 6"	FOOT	530	450	80
X0325969	PORTABLE, VEHICLE MOUNTED, CHANGEABLE MESSAGE BOARD	CAL DAY	10	8	2
X0326880	MESSAGE BOARD VEHICLE DRIVER	HOUR	160	107	53

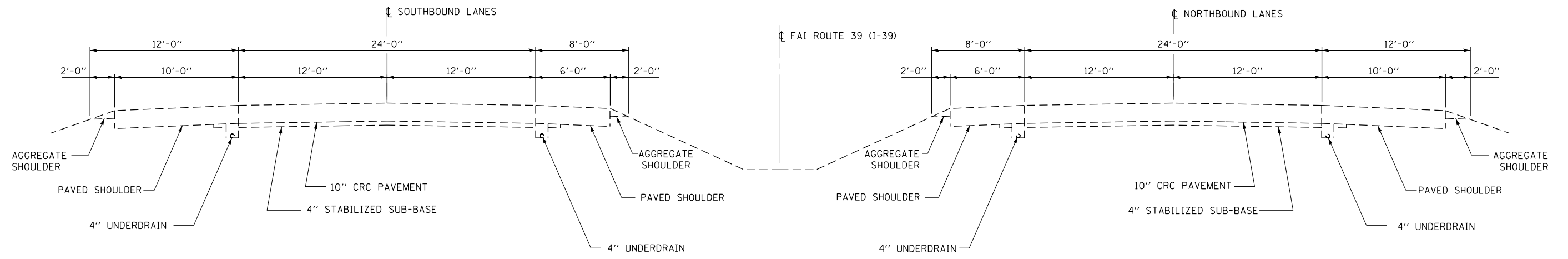
* SPECIALTY ITEMS

14

CODE NO.	ITEM	UNIT	TOTAL QUANTITY	CONSTRUCTION CODE	
				CONTRACT MAINTENANCE 100% STATE ROADWAY	CONTRACT MAINTENANCE 100% STATE ROADWAY
				0005 RURAL	0005 URBAN
X2700001	TEMPORARY RUMBLE STRIPS (SPECIAL)	EACH	12	10	2
X7015005	CHANGEABLE MESSAGE SIGN	CAL DAY	35	23	12

2

FILE NAME =	USER NAME = woodyeja	DESIGNED - JW	REVISED -	STATE OF ILLINOIS DEPARTMENT OF TRANSPORTATION	SUMMARY OF QUANTITIES	F.A.I. RTE	SECTION	COUNTY	TOTAL SHEETS	SHEET NO.
pw:\1084EB\INTEG\Illinois.gov\FWIDOT\Documents\DOT Offices\District 3\Projects\1366\30\CADD\66J30-details.dgn	DRAWN - JW	REVISED -	39			D3 I-39 PP 2019-1	LASALLE	12	4	
PLOT SCALE = 100.0000 / in.	CHECKED - JW	REVISED -	CONTRACT NO. 66J30							
Default	PLOT DATE = 3/28/2018	DATE - 03/02/2018	REVISED -			SCALE:	SHEET 2 OF 2 SHEETS	STA. TO STA.	ILLINOIS FED. AID PROJECT	



TYPICAL SECTION

FILE NAME =	USER NAME = woodyetjp	DESIGNED - JW	REVISED -	STATE OF ILLINOIS DEPARTMENT OF TRANSPORTATION	TYPICAL SECTION			F.A.I. RTE.	SECTION	COUNTY	TOTAL SHEETS	SHEET NO.			
pw:\IL084EBIDINTEG\ilnotes.gov\PWIDOT\Documents\DOT Offices\District 3\Projects\D366J30\CADDData\66J30-details.dgn		DRAWN - JW	REVISED -		SCALE:	SHEET 1	OF 1	SHEETS	STA.	TO STA.	39	D3 I-39 PP 2019-1	LASALLE	12	5
Default		CHECKED - JW	REVISED -		CONTRACT NO. 66J30										
		DATE - 03/01/2018	REVISED -		ILLINOIS FED. AID PROJECT										

NORTHBOUND LANES PATCHING - RURAL

LOCATION	PASSING LANE							DRIVING LANE							
	PATCH LENGTH	CLASS A PATCHING			PATCH REINF.	SAW CUTS	TIE BARS 3/4"	PATCH LENGTH	CLASS A PATCHING			PATCH REINF.	SAW CUTS	TIE BARS 3/4"	
		TYPE II 10"	TYPE III 10"	TYPE IV 10"					TYPE II 10"	TYPE III 10"	TYPE IV 10"				
MILE MARKER	FEET	SQ YD	SQ YD	SQ YD	SQ YD	FOOT	EACH	FEET	SQ YD	SQ YD	SQ YD	SQ YD	FOOT	EACH	
40.32	MARSHALL COUNTY LINE														
43.10	6	8			8	36	42	6	8				8	36	42
40.70								6	8				8	36	42
40.70								6	8				8	36	42
40.70								12		16			16	48	42
40.80								10	13				13	44	42
40.90								6	8				8	36	42
41.35	IL ROUTE 18 INTERCHANGE														
41.50								10	13				13	44	42
42.00	6	8			8	36	42								
42.40								25			33		33	74	54
46.90								6	8				8	36	42
47.20								22			29		29	68	53
47.40								20			27		27	64	52
47.40								20			27		27	64	52
47.70								10	13				13	44	42
47.70								10	13				13	44	42
48.10								6	8				8	36	42
48.10								6	8				8	36	42
48.10								6	8				8	36	42
48.10								6	8				8	36	42
48.10								6	8				8	36	42
48.40								10	13				13	44	42
48.40								10	13				13	44	42
48.40								6	8				8	36	42
48.42	TONICA INTERCHANGE														
48.70								8	11				11	40	42
48.80								6	8				8	36	42
54.60	ILLINOIS RIVER														
TOTALS		16			16	72	84		185	16	116		317	1054	1051

NB RURAL PATCHING TOTALS

CLASS A PATCHING					
TYPE II 10"	TYPE III 10"	TYPE IV 10"	PATCH REINF.	SAW CUTS	TIE BARS 3/4"
SQ YD	SQ YD	SQ YD	SQ YD	FOOT	EACH
201	16	116	333	1126	1135

**SCHEDULE
SOUTHBOUND LANES PATCHING - URBAN**

LOCATION	PASSING LANE							DRIVING LANE							
	PATCH LENGTH	CLASS A PATCHING			PATCH REINF.	SAW CUTS	TIE BARS 3/4"	PATCH LENGTH	CLASS A PATCHING			PATCH REINF.	SAW CUTS	TIE BARS 3/4"	
		TYPE II 10"	TYPE III 10"	TYPE IV 10"					TYPE II 10"	TYPE III 10"	TYPE IV 10"				
MILE MARKER	FEET	SQ YD	SQ YD	SQ YD	SQ YD	FOOT	EACH	FEET	SQ YD	SQ YD	SQ YD	SQ YD	FOOT	EACH	
54.60	ILLINOIS RIVER														
54.40								10	13				13	44	42
54.40								6	8				8	36	42
54.30								6	8				8	36	42
54.20								10	13				13	44	42
54.20								12		16			16	48	42
54.20								10	13				13	44	42
54.20								10	13				13	44	42
54.10								6	8				8	36	42
TOTALS									76	16			92	332	336

SB URBAN PATCHING TOTALS

CLASS A PATCHING			PATCH REINF.	SAW CUTS	TIE BARS 3/4"
TYPE II 10"	TYPE III 10"	TYPE IV 10"			
SQ YD	SQ YD	SQ YD	SQ YD	FOOT	EACH
76	16		92	332	336

**SCHEDULE
SOUTHBOUND LANES PATCHING - RURAL**

LOCATION	PASSING LANE							DRIVING LANE							
	PATCH LENGTH	CLASS A PATCHING			PATCH REINF.	SAW CUTS	TIE BARS 3/4"	PATCH LENGTH	CLASS A PATCHING			PATCH REINF.	SAW CUTS	TIE BARS 3/4"	
		TYPE II 10"	TYPE III 10"	TYPE IV 10"					TYPE II 10"	TYPE III 10"	TYPE IV 10"				
MILE MARKER	FEET	SQ YD	SQ YD	SQ YD	SQ YD	FOOT	EACH	FEET	SQ YD	SQ YD	SQ YD	SQ YD	FOOT	EACH	
53.80								6	8				8	36	42
53.54	OGLESBY INTERCHANGE														
52.70								8	11				11	40	42
52.50								6	8				8	36	42
52.20	IL ROUTE 251 INTERCHANGE														
51.45	IL ROUTE 71 INTERCHANGE														
48.42	TONICA INTERCHANGE														
48.00	8	11				11	40	42							
48.00								6	8				8	36	42
47.20								6	8				8	36	42
46.00								6	8				8	36	42
46.00								6	8				8	36	42
44.50								6	8				8	36	42
44.50								6	8				8	36	42
43.10								6	8				8	36	42
42.80	12		16			16	48	42							
42.70	6	8				8	36	42							
42.60								6	8				8	36	42
42.60								6	8				8	36	42
42.60	6	8				8	36	42							
42.40								6	8				8	36	42
42.40								6	8				8	36	42
42.20								16		21			21	56	42
42.10								6	8				8	36	42
41.35	IL ROUTE 18 INTERCHANGE														
40.32	MARSHALL COUNTY LINE														
TOTALS		27	16			43	160	168		123	21		144	600	672

SB RURAL PATCHING TOTALS

CLASS A PATCHING			PATCH REINF.	SAW CUTS	TIE BARS 3/4"
TYPE II 10"	TYPE III 10"	TYPE IV 10"			
SQ YD	SQ YD	SQ YD	SQ YD	FOOT	EACH
150	37		187	760	840

**SCHEDULE - PAVEMENT MARKING
NORTHBOUND - RURAL**

LOCATION		POLYUREA PAVEMENT MARKING TYPE I LINE 4"		POLYUREA PAVEMENT MARKING TYPE I LINE 6"
		FEET		FEET
		YELLOW	WHITE	WHITE
MILE POST	INTERCHANGE			
40.32	MARSHALL COUNTY LINE			
43.10		6	6	10
40.70			6	10
40.70			6	10
40.70			12	10
40.80			10	10
40.90			6	10
41.35	IL ROUTE 18 INTERCHANGE			
41.50			10	10
42.00		6		10
42.40			25	10
46.90			6	10
47.20			22	10
47.40			20	10
47.40			20	10
47.70			10	10
47.70			10	10
48.10			6	10
48.10			6	10
48.10			6	10
48.40			10	10
48.40			10	10
48.40			6	10
48.42	TONICA INTERCHANGE			
48.70			8	10
48.80			6	10
54.60	ILLINOIS RIVER			
SUBTOTAL		12	239	
NB TOTALS		251		250

**SCHEDULE - PAVEMENT MARKING
SOUTHBOUND - URBAN**

LOCATION		POLYUREA PAVEMENT MARKING TYPE I LINE 4"		POLYUREA PAVEMENT MARKING TYPE I LINE 6"
		FEET		FEET
		YELLOW	WHITE	WHITE
MILE POST	INTERCHANGE			
54.60	ILLINOIS RIVER			
54.40			10	10
54.40			6	10
54.30			6	10
54.20			10	10
54.20			12	10
54.20			10	10
54.20			10	10
54.10			6	10
SUBTOTAL			70	
SB TOTALS		70		80

**SCHEDULE - PAVEMENT MARKING
SOUTHBOUND - RURAL**

LOCATION		POLYUREA PAVEMENT MARKING TYPE I LINE 4"		POLYUREA PAVEMENT MARKING TYPE I LINE 6"
		FEET		FEET
		YELLOW	WHITE	WHITE
MILE POST	INTERCHANGE			
53.80			6	10
53.54	OGLESBY INTERCHANGE			
52.70			8	10
52.50			6	10
52.20	IL ROUTE 251 INTERCHANGE			
51.45	IL ROUTE 71 INTERCHANGE			
48.42	TONICA INTERCHANGE			
48.00		8		10
48.00			6	10
47.20			6	10
46.00			6	10
46.00			6	10
44.50			6	10
44.50			6	10
43.10			6	10
42.80		12		10
42.70		6		10
42.60			6	10
42.60			6	10
42.60		6		10
42.40			6	10
42.40			6	10
42.20			16	10
42.10			6	10
41.35	IL ROUTE 18 INTERCHANGE			
40.32	MARSHALL COUNTY LINE			
SUBTOTAL		32	108	
SB TOTALS		140		200

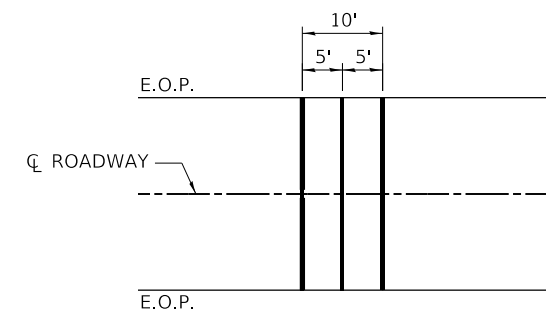
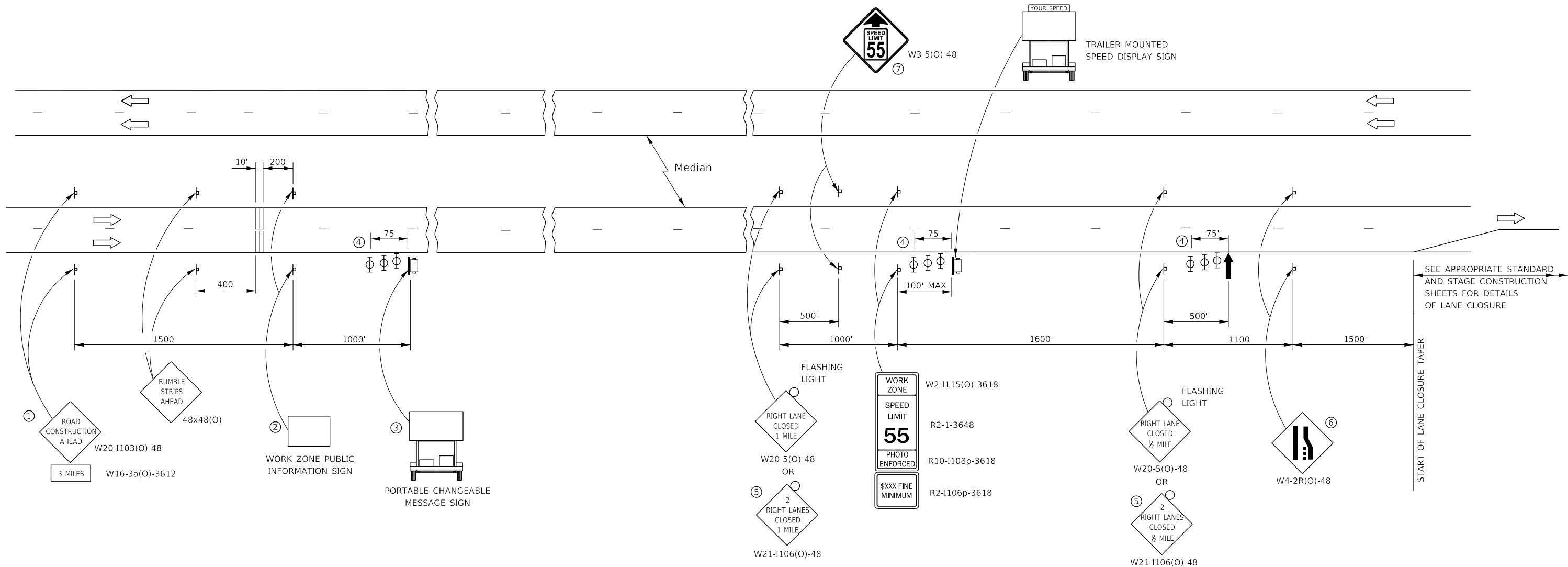
FILE NAME =	USER NAME = woodyetjp	DESIGNED - JW	REVISED -
pw:\IL084EB\INTEG\ilnotes.gov\PWIDOT\Documents\DOT Offices\District 3\Projects\0366\J30\CADData\66J30-details.dgn		DRAWN - JW	REVISED -
Default	PLOT SCALE = 100.0000' / in.	CHECKED - JW	REVISED -
	PLOT DATE = 3/24/2018	DATE - 03/02/2018	REVISED -

**STATE OF ILLINOIS
DEPARTMENT OF TRANSPORTATION**

SCHEDULES

SCALE: SHEET 3 OF 3 SHEETS STA. TO STA.

F.A.I. RTE.	SECTION	COUNTY	TOTAL SHEETS	SHEET NO.
39	D3 I-39 PP 2019-1	LASALLE	12	8
CONTRACT NO. 66J30				
ILLINOIS FED. AID PROJECT				



TEMPORARY RUMBLE STRIP

- ① THE ROAD CONSTRUCTION AHEAD SIGN SHALL BE LOCATED 3 MILES IN ADVANCE OF THE PROJECT LIMITS.
- ② THE MESSAGE AND SIZE OF THE WORK ZONE PUBLIC INFORMATION SIGN SHALL BE AS SPECIFIED BY THE DEPARTMENT.
- ③ TO BE PLACED IN THE MEDIAN WHEN FEASIBLE. THE MESSAGE BOARD SHALL BE USED TO DISPLAY STATUS OF LANES WITHIN THE PROJECT. THE PRIMARY MESSAGES SHALL BE:
 "RIGHT LANE CLOSED" / " x MILES AHEAD"
 "LEFT LANE CLOSED" / " x MILES AHEAD"
 "ALL LANES OPEN"
- ④ THREE, TYPE II BARRICADES, DRUMS, OR VERTICAL BARRICADES AT 25' CENTERS.
- ⑤ THIS SIGN SHALL BE USED WHEN 2 LANES ARE CLOSED.
- ⑥ WHEN THE LEFT LANE IS CLOSED, SWITCH THESE TWO SIGNS AND THE DIRECTION OF THE MERGE ARROW.
- ⑦ THIS SIGN SHALL ONLY BE USED IF THE EXISTING SPEED LIMIT IS GREATER THAN 65 MPH.

- ↑ ARROW BOARD
- ☐ PORTABLE CHANGEABLE MESSAGE SIGN
- ⊥ SIGN
- ⊕ TYPE II BARRICADE, DRUM, OR VERTICAL BARRICADE WITH MONODIRECTIONAL FLASHING LIGHT
- ≡ TEMPORARY RUMBLE STRIPS (SEE SPECIAL PROVISION)

GENERAL NOTE:

THIS STANDARD IS USED WHERE AT ANY TIME A LANE IS CLOSED ON A FREEWAY/EXPRESSWAY.

WHEN THE LEFT LANE IS CLOSED, LEFT LANE CLOSED SIGNS SHALL BE SUBSTITUTED FOR THE RIGHT LANE CLOSED SIGNS.

THE FIRST THREE SIGNS AND THE MESSAGE BOARD ARE STATIONARY. THE OTHER SIGNS AND ARROWBOARDS SHALL BE MOVED AS NECESSARY TO MAINTAIN THE REQUIRED DISTANCE FROM THE START OF THE LANE CLOSURE TAPER(S).

SEE SPECIAL PROVISIONS.

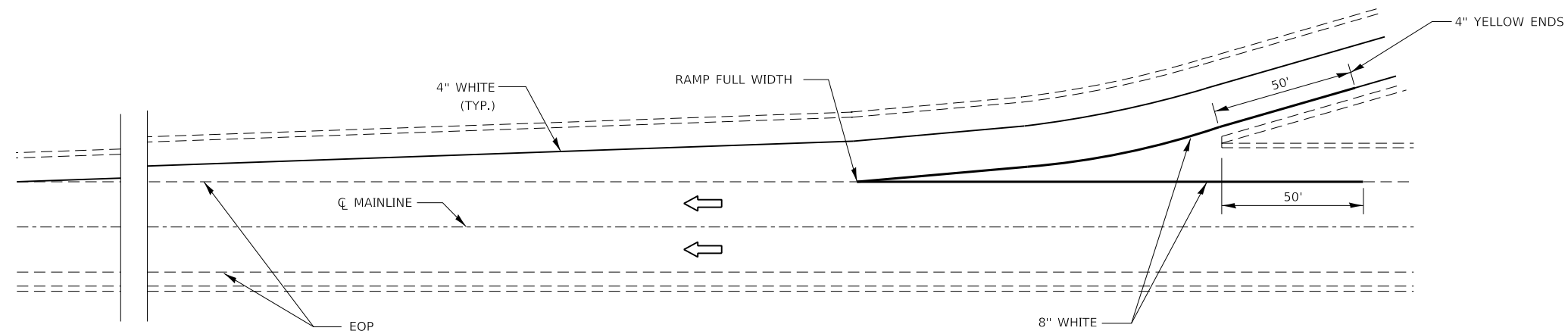
FILE NAME =	USER NAME = woodyetjp	DESIGNED - JW	REVISED - JW
pw:\IL084EBIDINTEG\ilnotes.gov\PWIDOT\Documents\DOT Offices\District 3\Projects\D366J30\CADData\66J30-details.dgn		DRAWN - JW	REVISED - JW
Default	PLOT SCALE = 100.0000 "/in.	CHECKED - JW	REVISED - JW
	PLOT DATE = 3/24/2018	DATE - 03/02/2018	REVISED - 03/21/2018

**STATE OF ILLINOIS
DEPARTMENT OF TRANSPORTATION**

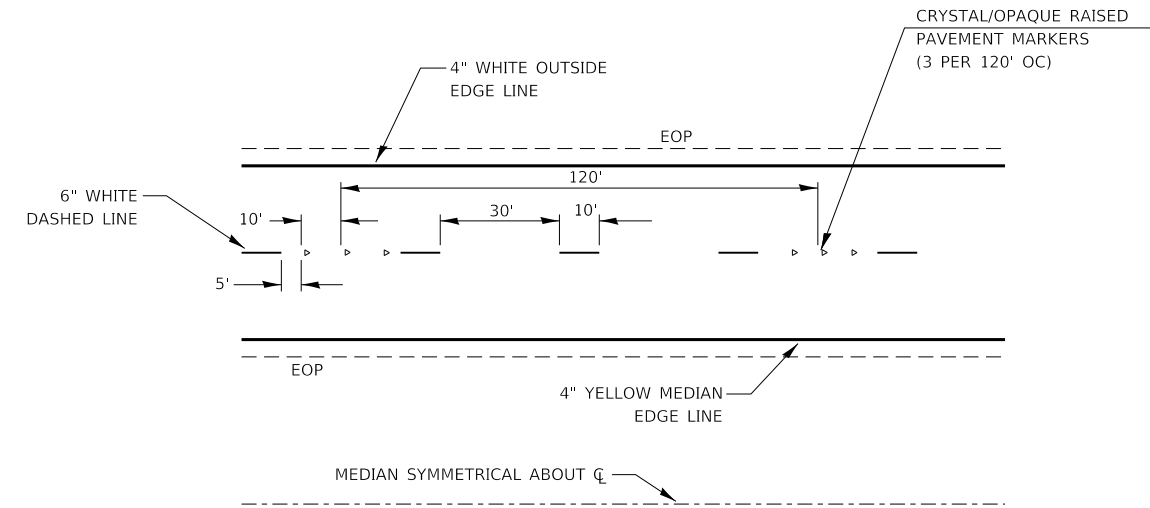
**TRAFFIC CONTROL AND PROTECTION,
STANDARD 701400**

SCALE: SHEET 1 OF 1 SHEETS STA. TO STA.

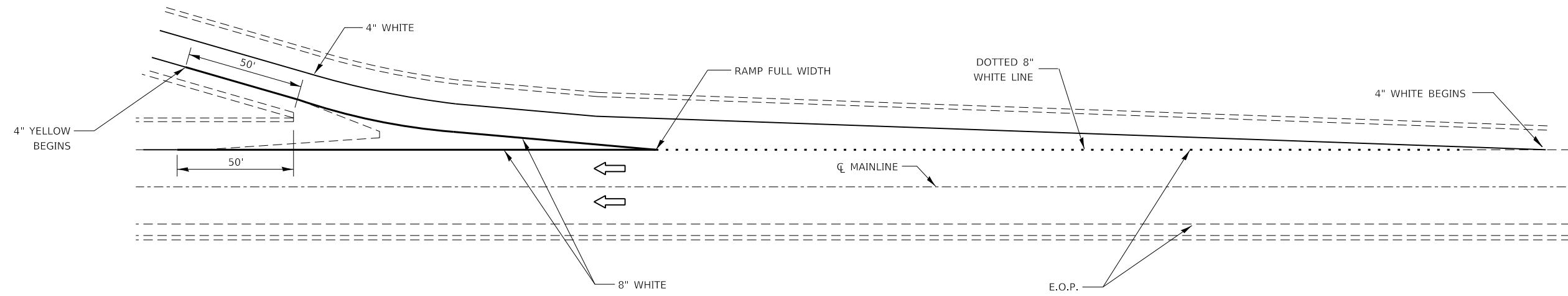
F.A.I. RTE.	SECTION	COUNTY	TOTAL SHEETS	SHEET NO.
39	D3 I-39 PP 2019-1	LASALLE	12	9
CONTRACT NO. 66J30				
ILLINOIS FED. AID PROJECT				



TYPICAL PAVEMENT MARKING FOR ENTRANCE RAMP TERMINALS



TYPICAL PAVEMENT MARKINGS



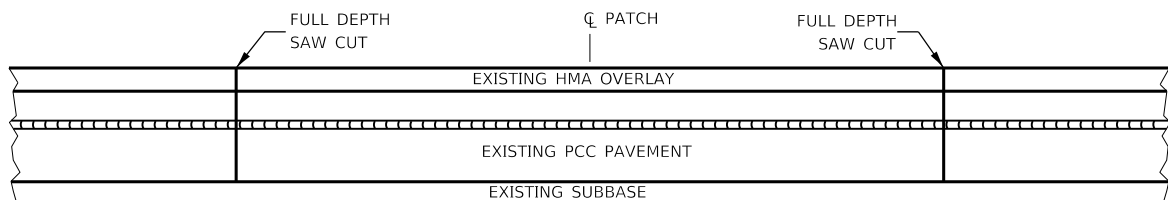
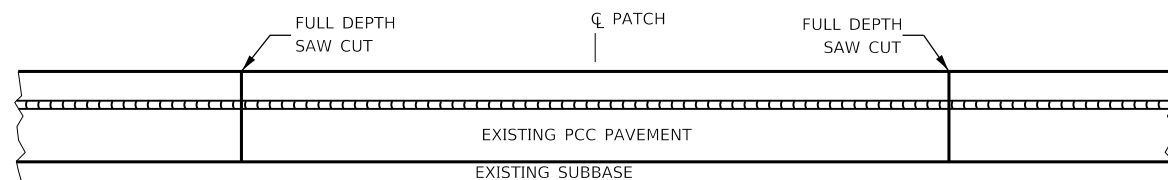
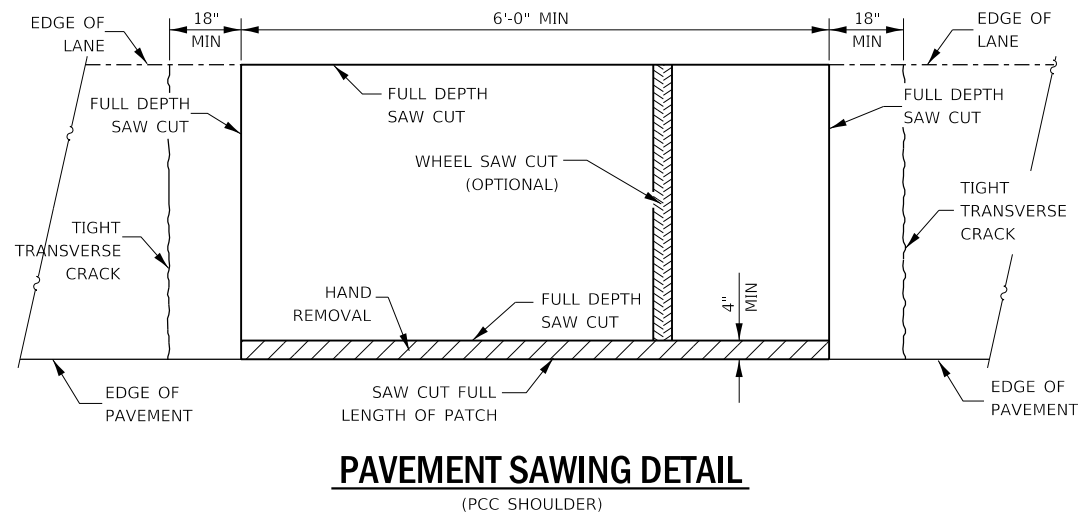
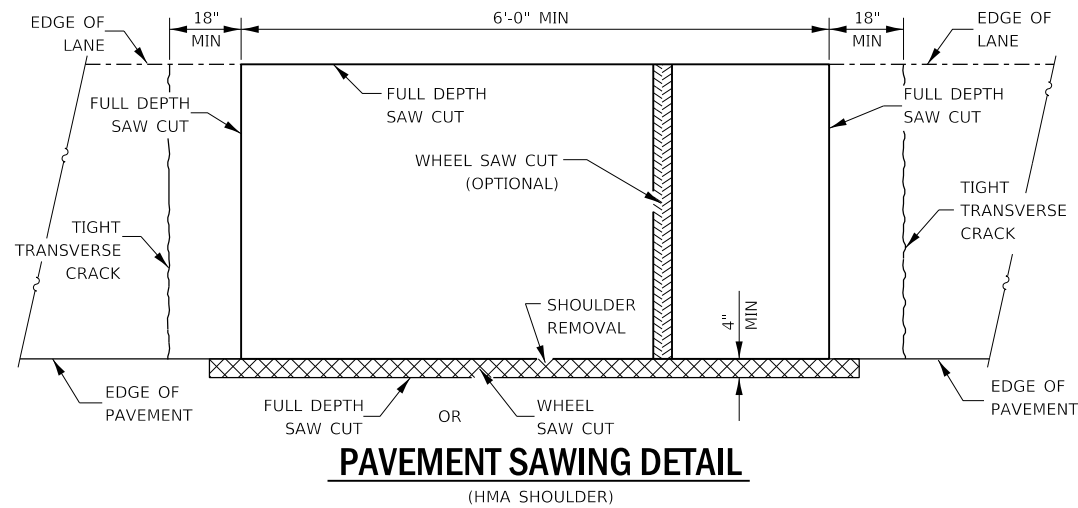
TYPICAL PAVEMENT MARKINGS FOR EXIT RAMP TERMINALS

FILE NAME =	USER NAME = woodyetjp	DESIGNED - JW	REVISED -
pw:\IL084EBIDINTEG\ilnotes.gov\PWIDOT\Documents\DOT Offices\District 3\Projects\D366J30\CADDData\66J30-details.dgn		DRAWN - JW	REVISED -
Default	PLOT SCALE = 100.0000' / in.	CHECKED - JW	REVISED -
	PLOT DATE = 3/24/2018	DATE - 03/02/2018	REVISED -

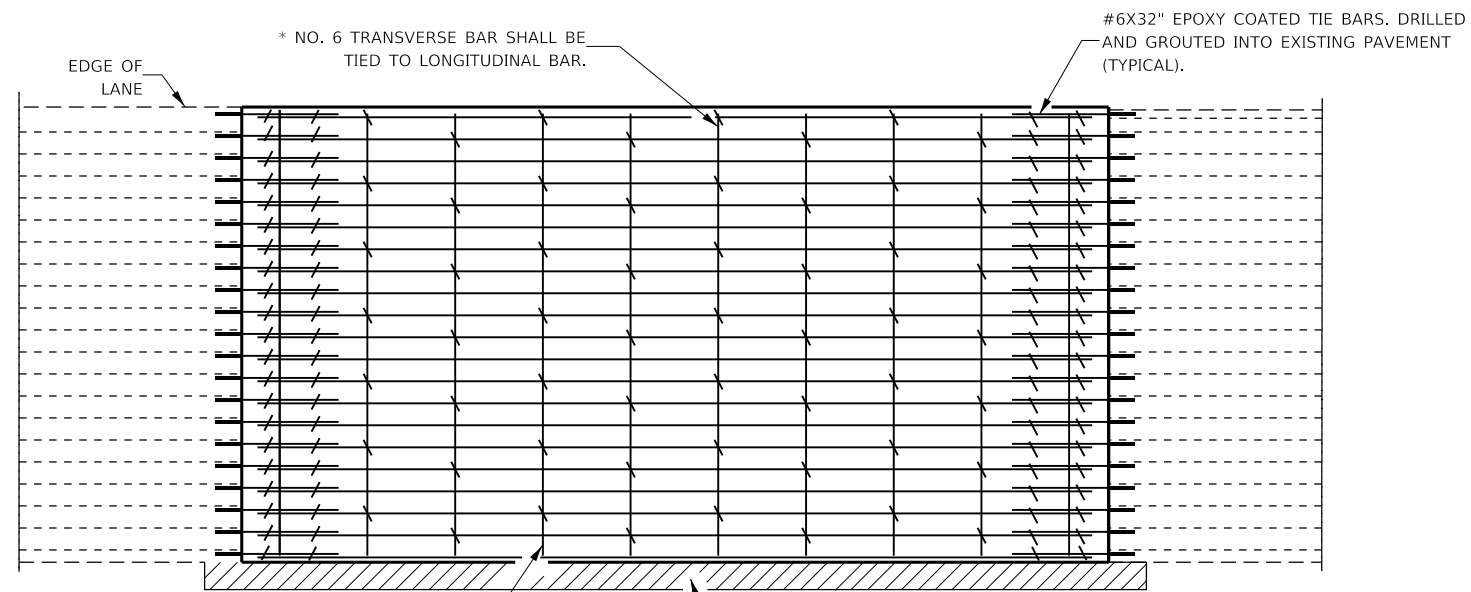
**STATE OF ILLINOIS
DEPARTMENT OF TRANSPORTATION**

PAVEMENT MARKING DETAILS			
SCALE:	SHEET 1	OF 1	SHEETS
	STA.		TO STA.

F.A.I. RTE.	SECTION	COUNTY	TOTAL SHEETS	SHEET NO.
39	D3 I-39 PP 2019-1	LASALLE	12	10
CONTRACT NO. 66J30				
ILLINOIS FED. AID PROJECT				

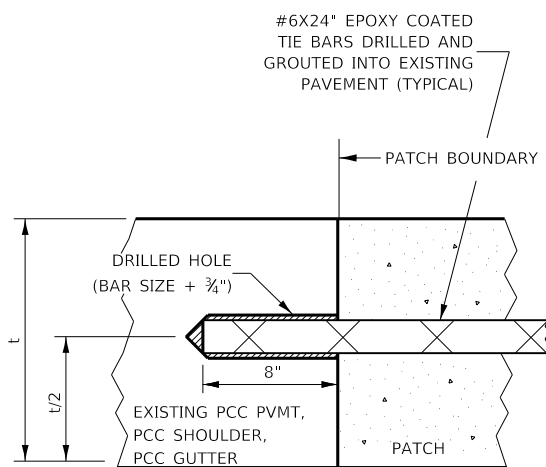


PAVEMENT SAWING DETAIL FOR CLASS A PATCHING (CRC PAVEMENT)



TRANSVERSE REBAR SHALL EXTEND TO OUTER LONGITUDINAL REBAR WHILE PROVIDING A MINIMUM 3" CLEARANCE FROM EXISTING PAVEMENT EDGE

PAVEMENT REINFORCEMENT DETAIL



LONGITUDINAL CONSTRUCTION JOINT

PATCHES MORE THAN 20' IN LENGTH SHALL BE TIED TO ADJACENT PAVEMENT, PCC SHOULDERS OR PCC CURB AND GUTTER WITH #6x24" EPOXY COATED TIE BARS AT 36" CENTERS.

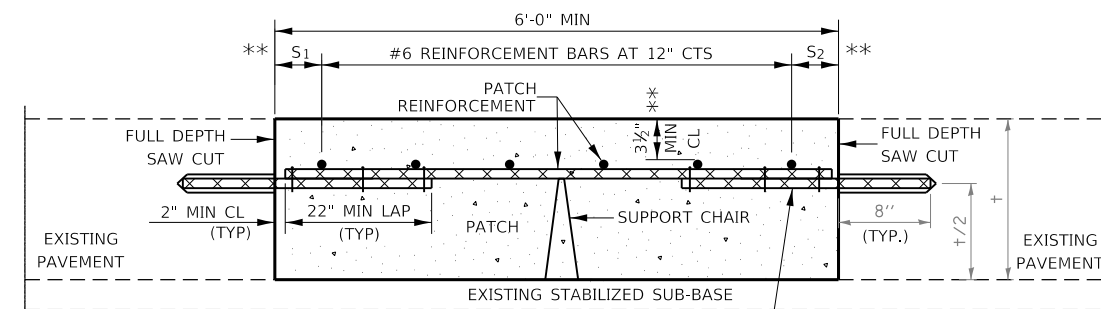
NOTES:

EXISTING LONGITUDINAL REINFORCEMENT SPACING: 6 3/4"

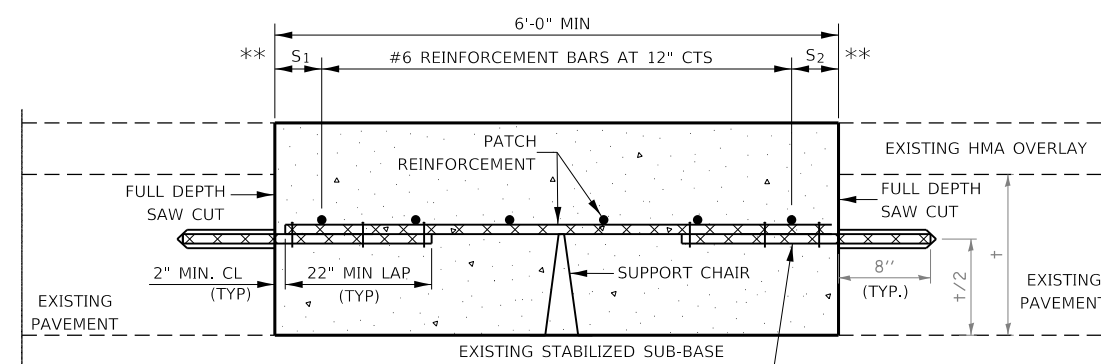
SPACING OF NEW LONGITUDINAL REINFORCEMENT AND NEW LONGITUDINAL TIE BARS SHALL MATCH SPACING OF EXISTING REINFORCEMENT AND SHALL BE TIED TOGETHER WITH A MINIMUM OF TWO TIES PER BAR.

* EVERY THIRD INTERSECTION MUST BE TIED. WHEN THE MINIMUM CLEARANCE CANNOT BE OBTAINED WITH THE TRANSVERSE REBAR ON TOP, THEN THE TRANSVERSE REBAR SHALL BE TIED TO THE BOTTOM OF THE LONGITUDINAL REBAR.

** VARIABLES WHERE S₁ AND S₂ ARE 2 1/2" MIN. AND 12" MAX.



WITHOUT HMA OVERLAY



WITH HMA OVERLAY

PATCHING DETAIL FOR CLASS A PATCHING (CRC PAVEMENT)

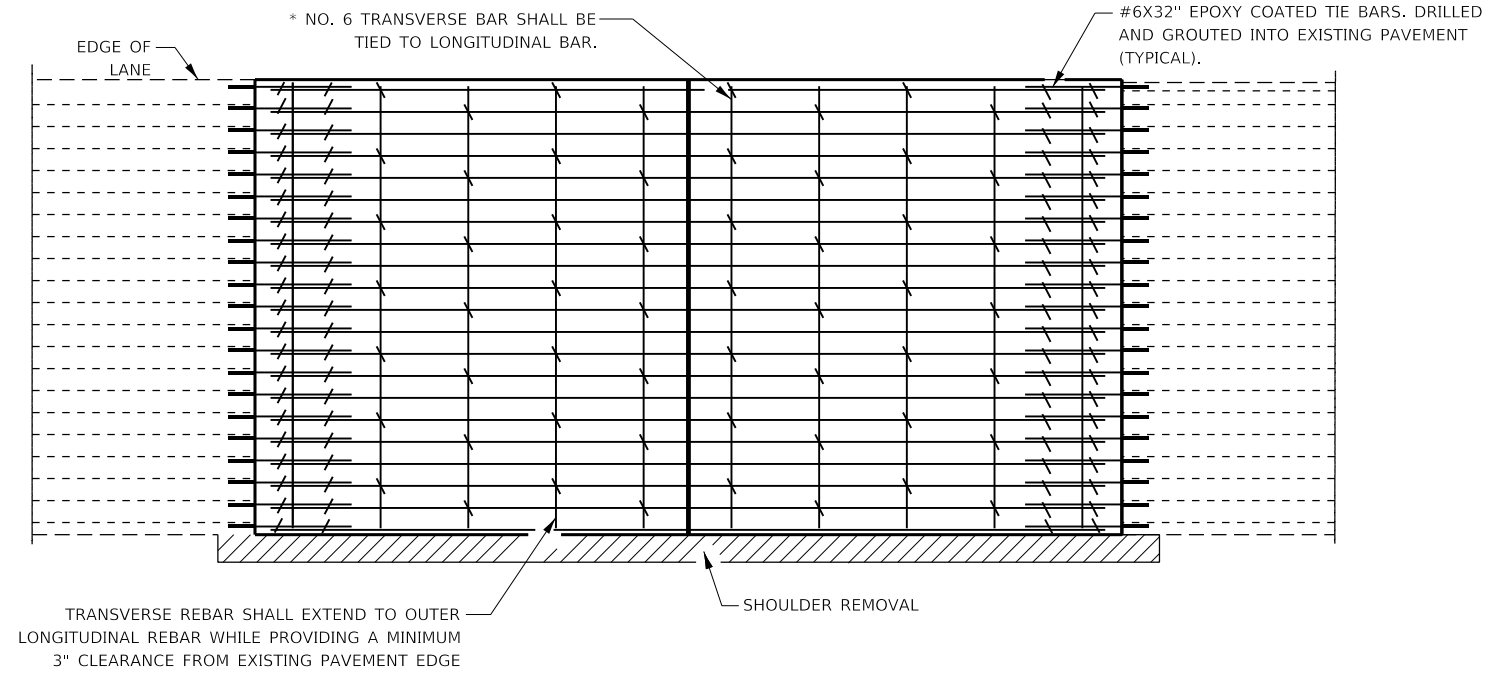
FILE NAME =	USER NAME = woodyetjp	DESIGNED - JW	REVISED -
pw:\IL084EBIDINTEG\ilnotes.gov\PWIDOT\Documents\DOT Offices\District 3\Projects\D366J30\CADData\66J30-details.dgn		DRAWN - JW	REVISED -
Default	PLOT SCALE = 100.0000' / in.	CHECKED - JW	REVISED -
	PLOT DATE = 3/24/2018	DATE - 03/01/2018	REVISED -

STATE OF ILLINOIS
DEPARTMENT OF TRANSPORTATION

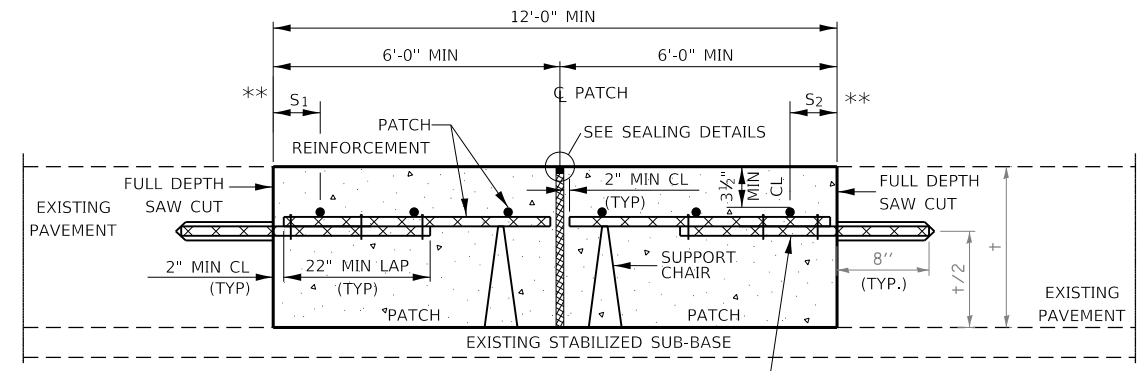
CLASS A PATCHING DETAILS

SCALE: SHEET 1 OF 2 SHEETS STA. TO STA.

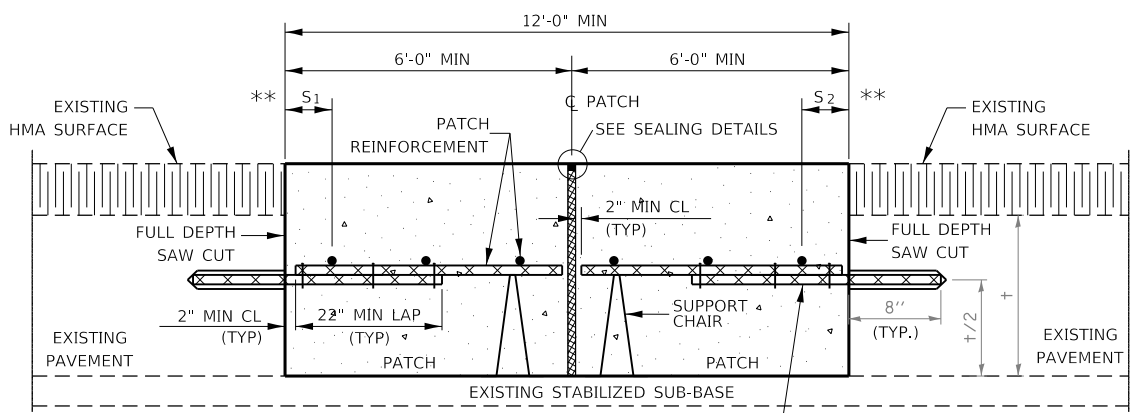
F.A.I. RTE.	SECTION	COUNTY	TOTAL SHEETS	SHEET NO.
39	D3 I-39 PP 2019-1	LASALLE	12	11
CONTRACT NO. 66J30				
ILLINOIS FED. AID PROJECT				



PAVEMENT REINFORCEMENT DETAIL

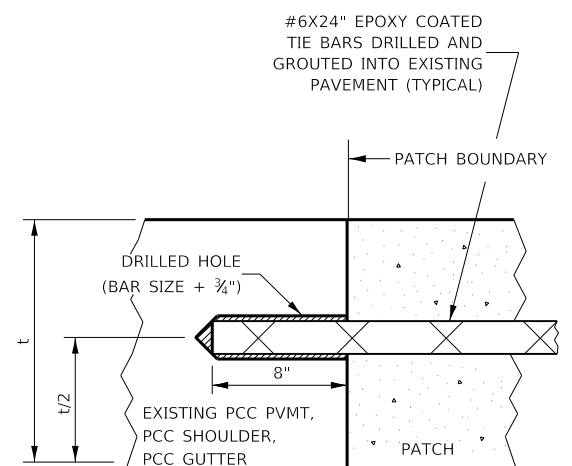


WITHOUT HMA OVERLAY



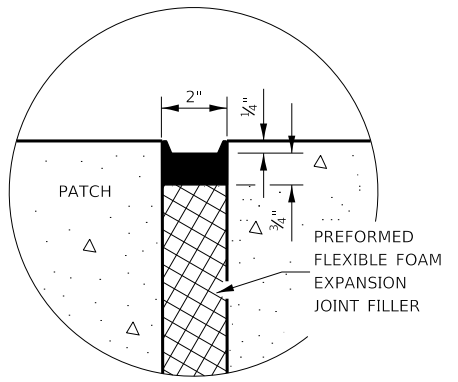
WITH HMA OVERLAY

CLASS A PATCH WITH EXPANSION JOINT

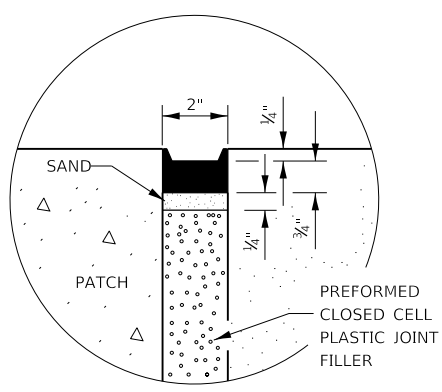


LONGITUDINAL CONSTRUCTION JOINT

PATCHES MORE THAN 20' IN LENGTH SHALL BE TIED TO ADJACENT PAVEMENT, PCC SHOULDERS OR PCC CURB AND GUTTER WITH #6x24" EPOXY COATED TIE BARS AT 36" CENTERS.



SEALING DETAIL



SEALING DETAIL

- NOTES:**
- EXISTING LONGITUDINAL REINFORCEMENT SPACING; 6 1/4'.
 - SPACING OF NEW LONGITUDINAL REINFORCEMENT AND NEW LONGITUDINAL TIE BARS SHALL MATCH SPACING OF EXISTING REINFORCEMENT AND SHALL BE TIED TOGETHER WITH A MINIMUM OF TWO TIES PER BAR.
 - SUPPORT CHAIRS SHALL BE REQUIRED WHENEVER PATCH LENGTH EXCEEDS 6'-0"
 - * EVERY THIRD INTERSECTION MUST BE TIED. WHEN THE MINIMUM CLEARANCE CANNOT BE OBTAINED WITH THE TRANSVERSE REBAR ON TOP, THEN THE TRANSVERSE REBAR SHALL BE TIED TO THE BOTTOM OF THE LONGITUDINAL REBAR.
 - ** VARIABLES WHERE S₁ AND S₂ ARE 2 1/2" MIN. AND 12" MAX.

FILE NAME =	USER NAME = woodyerjp	DESIGNED - JW	REVISED -	STATE OF ILLINOIS DEPARTMENT OF TRANSPORTATION	CLASS A PATCHING DETAILS			F.A.I. RTE.	SECTION	COUNTY	TOTAL SHEETS	SHEET NO.
pw:\IL084EBID\INTEG\ifnotes.gov\PIWIDOT\Documents\DOT Offices\District 3\Projects\D366J30\CADDData\66J30-details.dgn	DRAWN - JW	REVISED -	39					D3 L-39 PP 2019-1	LASALLE	12	12	
Default	PLOT SCALE = 100.0000' / in.	CHECKED - JW	REVISED -		CONTRACT NO. 66J30							
	PLOT DATE = 3/24/2018	DATE - 03/01/2018	REVISED -		SCALE:	SHEET 2 OF 2 SHEETS	STA.	TO STA.	ILLINOIS	FED. AID PROJECT		